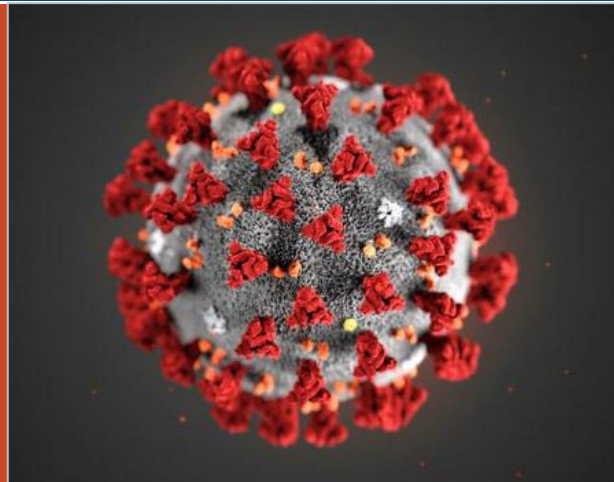


# Assessing the Local Impact of COVID-19

*Planning for An Evidence-Based Prevention Response*



**Aliana Havrilla**

Action Learning Coach

County Health Rankings & Roadmaps

**Chuck Klevgaard**

Prevention Manager, Great Lakes PTTC

# POLL

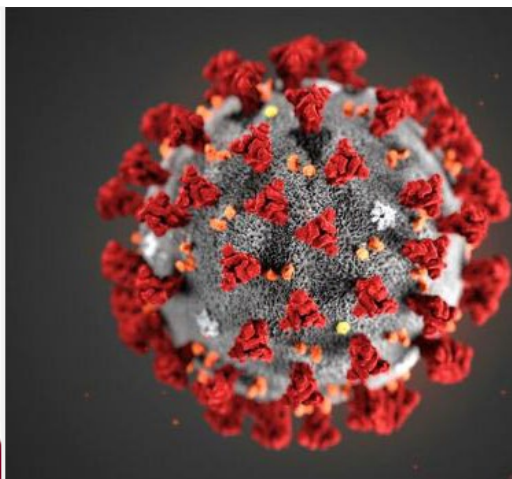


**Which is Your  
State Bird**

- A. Cardinal**
- B. American Robin**
- C. Common Loon**
- D. Other**



# Your Presenter(s)



**Aliana Havrilla**

Action Learning Coach

County Health Rankings & Roadmaps

**Chuck Klevgaard,  
SCPS**

Prevention Manager  
Great Lakes PTTC

# Objectives

By the end of this webinar, you will be able to:

- Identify ways that the pandemic has impacted your community
- List methods and tools for assessing community conditions
- List evidence-based strategies for strengthening your community

# Factors Impacted by COVID-19

## Socioeconomic Factors



Education



Job Status



Support



Income



Community Safety

## Physical Environment



Alcohol Use



Diet & Exercise



Tobacco Use



Sexual Activity

## Health Behavior



## Healthcare

Access to Care  
Quality of Care

40%

10%

30%

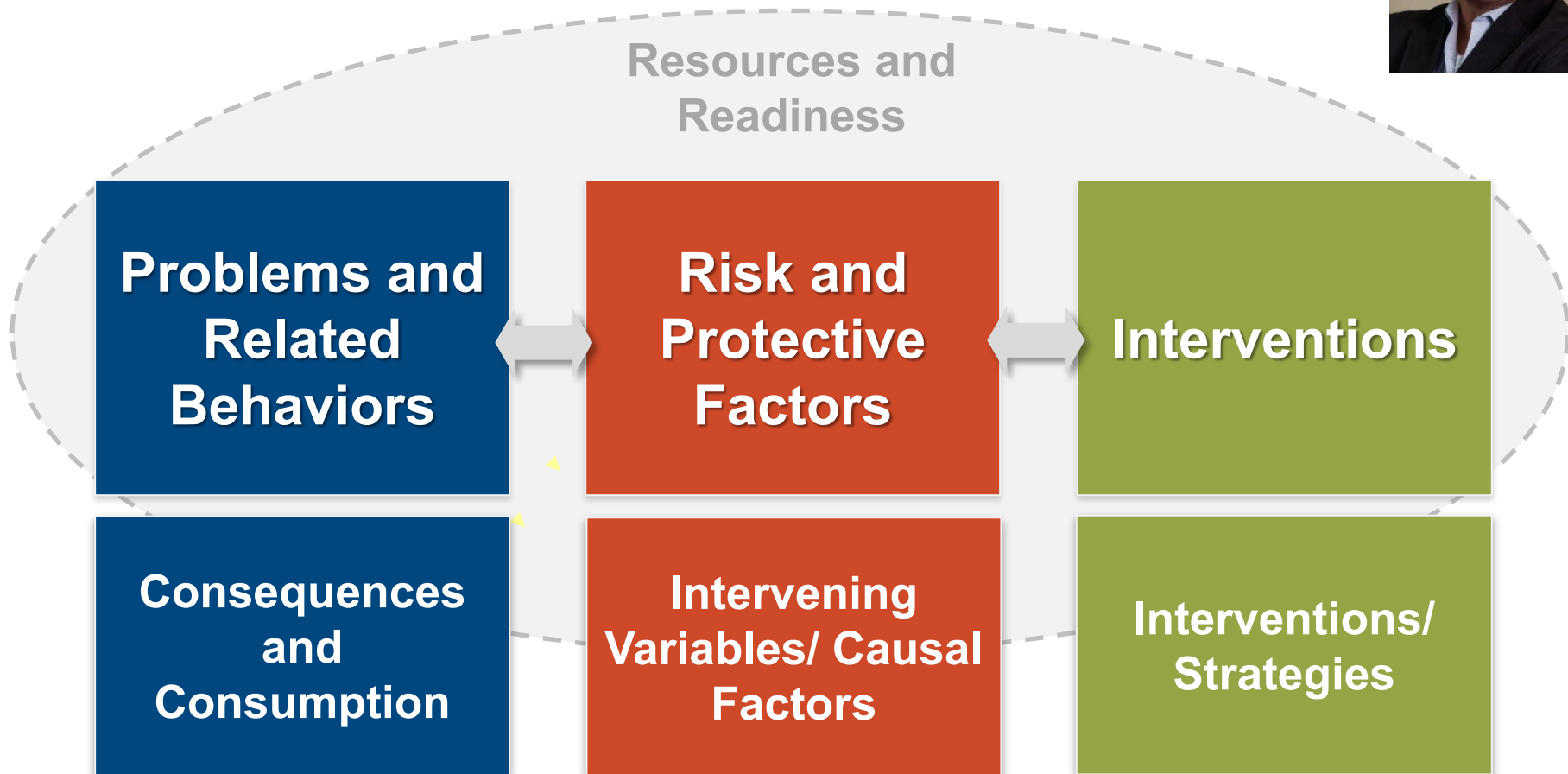
20%

**20 percent** of a person's health and well being is related to access to care and quality of care.

The physical environment, social determinants and behavioral factors drive **80 percent** of health outcomes.



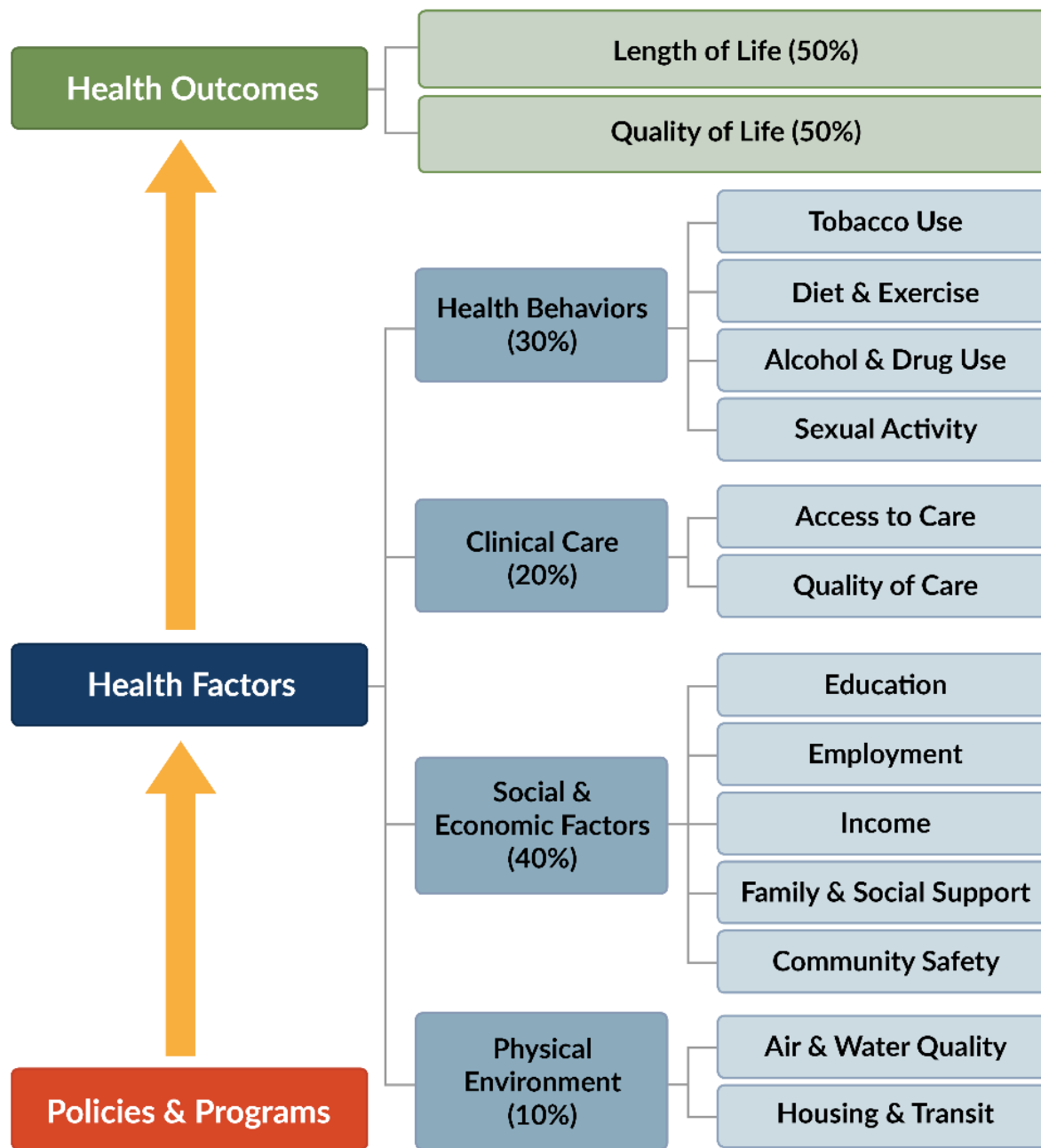
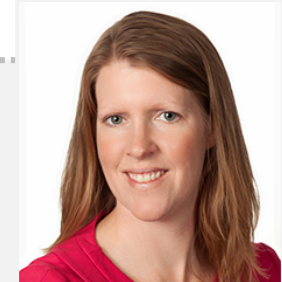
# Familiar Prevention Roadmap



# Using Data to Reveal the Factors that Influence Health



Allen County, KS 2017



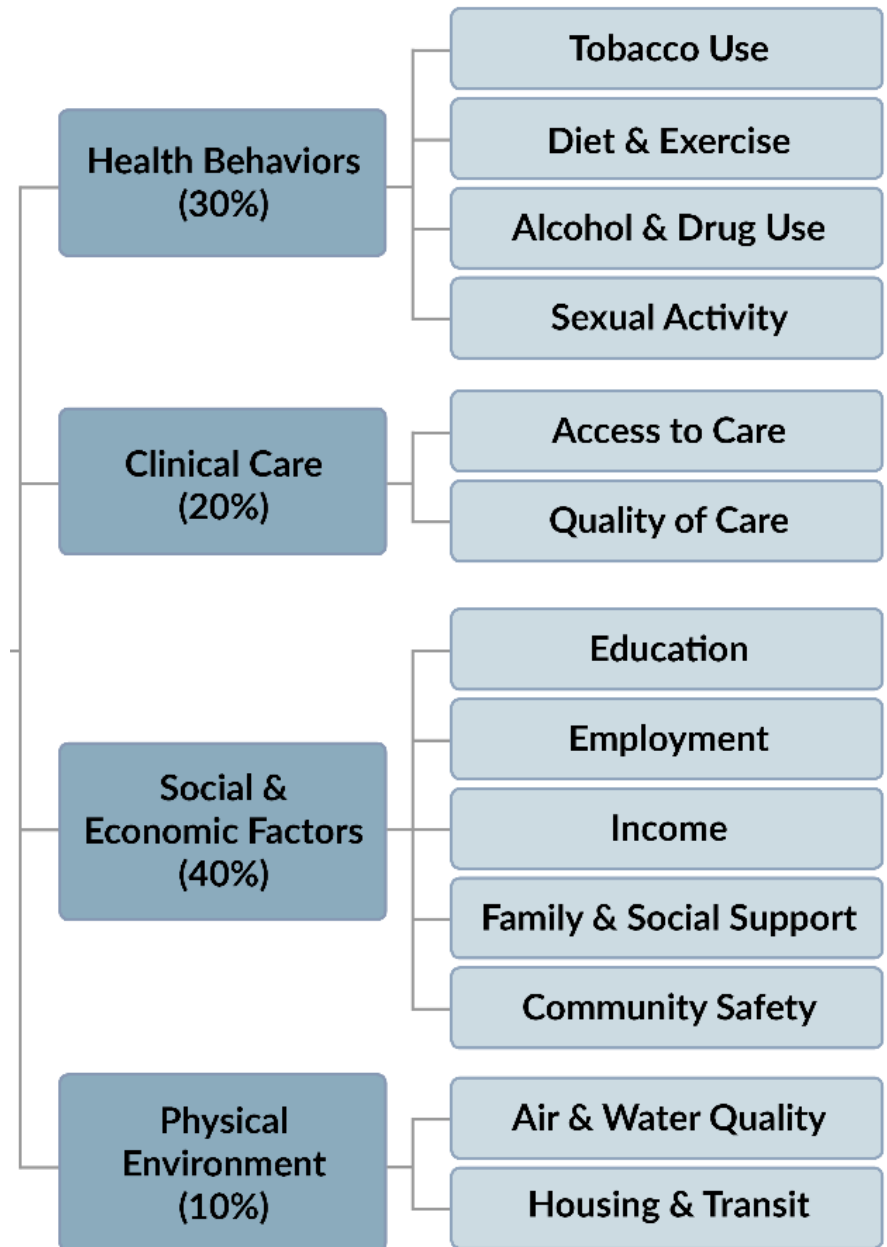
What are key Differences in this model?



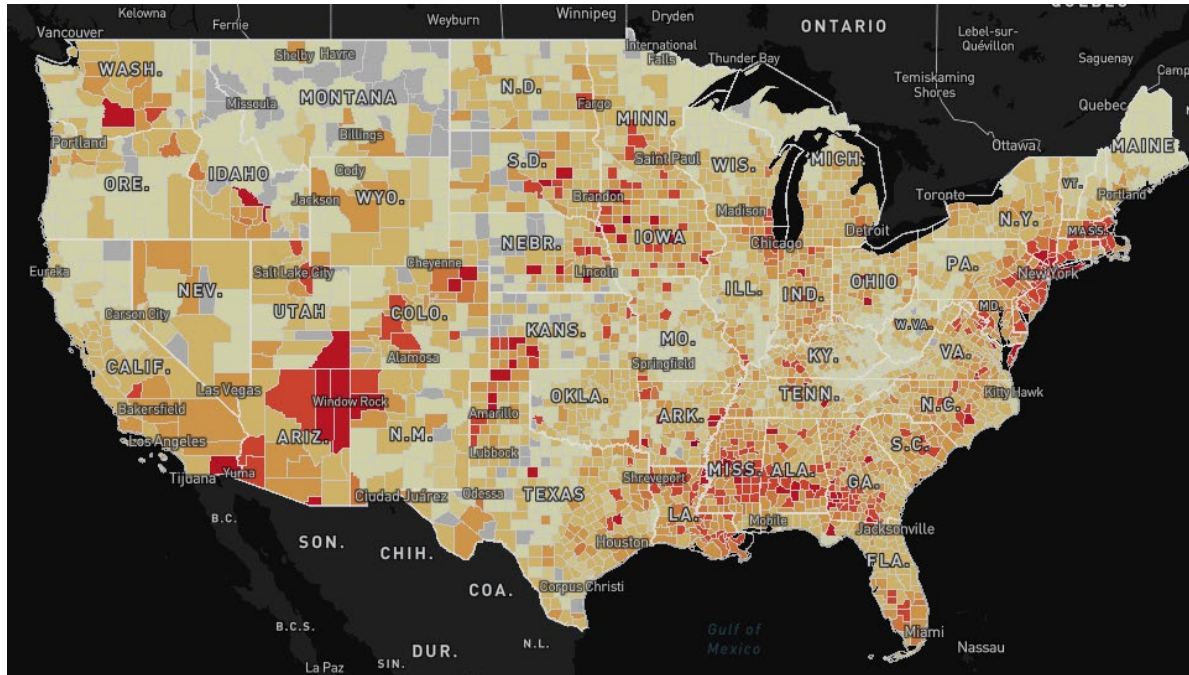
# POLL

Which Category Are You Most Interested in ?

- A. Health Behaviors
- B. Clinical Care
- C. Social & Economic
- D. Physical Environment



# Covid-19 & County Health Rankings Data



## Dane County, WI

Population: 529,843

Total Cases: 1,139

Total Deaths: 32

Cases per 10k Population: 21.5

Deaths per 10k Population: 0.6

New Cases per 10k Population: 0.8

New Deaths per 10k Population: 0

Licensed Hospital Beds: 2,131

Cases per Bed: 0.5

### Socioeconomic Indicators

Source: [County Health Rankings](#)

Child Poverty Rate ⓘ: 8.4

Income Ratio ⓘ: 4.3

Median Household Income ⓘ: 71,789

Over 65 Years % ⓘ: 13.7

Uninsured Percentage ⓘ: 5.1

Primary Care Rate ⓘ: 127.7

Preventable Hospitalizations ⓘ: 3,607

Black Residential Segregation ⓘ: 49.6

### Forecasting

Source: [Yu Group at Berkeley](#)

5-Day Severity Index ⓘ: **HIGH**

Predicted Deaths by Jun 22 ⓘ: 32.4

Predicted Deaths by Jun 23 ⓘ: 32.8

Predicted Deaths by Jun 24 ⓘ: 33.1

Predicted Deaths by Jun 25 ⓘ: 33.4

Predicted Deaths by Jun 26 ⓘ: 33.7

Predicted Deaths by Jun 27 ⓘ: 34

Predicted Deaths by Jun 28 ⓘ: 34.2



# Data to Action



Conduct a (rapid) assessment



Understand assets, needs, strengths and stakeholders



Define your focus



Identify resources and opportunities



Develop feedback loops, track progress



Provide on-going support

# How Communities Create Change



Take Action Cycle

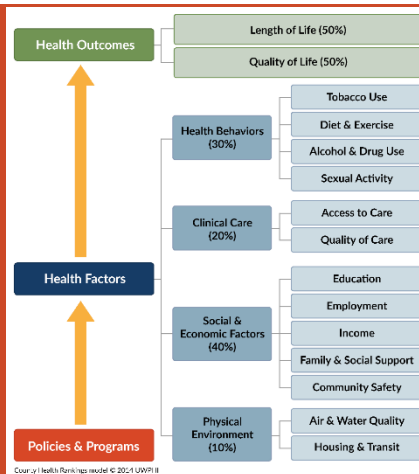


# Work Together


- Understand cultural considerations
- Provide access to resources and information
- Increase civic capacity
- Consider who else should be included
- Build trust





# Where Do You See Yourself ?





 Conduct a (rapid) assessment

 Define your focus

 Develop feedback loops, track progress

 Understand assets, needs, strengths and stakeholders

 Identify resources and opportunities

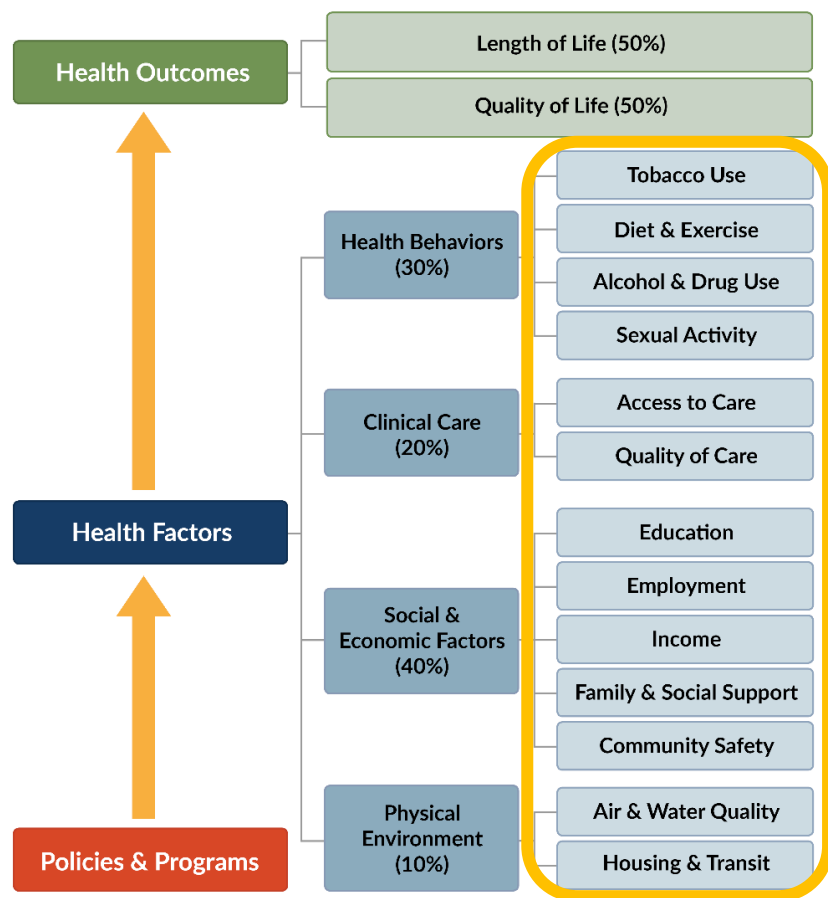
 Provide on-going support



## Assessment, Process, The Role for Evidence



# What Works for Health



Policies and programs that are a good fit for your community's priorities.

<https://www.countyhealthrankings.org/take-action-to-improve-health/what-works-for-health>



# A Menu of Ideas

- Evidence rating
- Literature summary
  - Who
  - What
  - Cost
- Disparity rating
- Implementation examples & tools





# How We Support Communities



DATA



EVIDENCE



GUIDANCE



STORIES



Great Lakes (HHS Region 5)

PTTC

Prevention Technology Transfer Center Network

Funded by Substance Abuse and Mental Health Services Administration



# The Community Transformation Team at CHR, and Roadmaps *Here in the Region 5*



**Kitty Jerome**  
Team Director,  
Community  
Guidance



**Joe Hinton**  
Action Learning Coach  
Chicago, IL



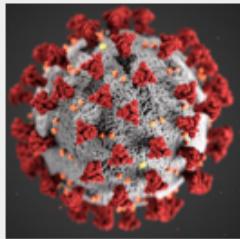
**Justin Revas**  
Network Strategist  
Madison, WI



**Lindsay Garber**  
Network Strategist  
Madison, WI

END

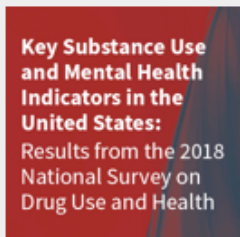
## Current Topics




COVID-19  
Guidance and  
Resources



Letter to Mental  
Health  
Commissioners



Key Substance Use  
and Mental Health  
Indicators in the  
United States:  
Results from the 2018  
National Survey on  
Drug Use and Health

Watch a video  
from Dr.  
McCance-Katz on  
NSDUH 2018 

- The **SAMHSA Coronavirus (COVID-19) information page** contains several resources for mental health and substance use disorder providers on various topics. This information can be found at <https://www.samhsa.gov/coronavirus>.
- The **SAMHSA DTAC Recovery webpage** contains information and resources to help during the recovery process in the aftermath of disasters. This webpage can be found at <https://www.samhsa.gov/dtac/recovering-disasters>.
- **Psychological First Aid (PFA)**, offered by the National Child Traumatic Stress Network, is a free online course that includes a 6-hour interactive training that puts the participant in the role of a provider in a post-disaster scene. It can be found at:  
<https://learn.nctsn.org/course/index.php?categoryid=11>
- **Skills for Psychological Recovery (SPR)**, also offered by the National Child Traumatic Stress Network, is an intervention to help survivors gain skills to manage distress and cope with post-disaster stress. It can be found at:  
<https://learn.nctsn.org/enrol/index.php?id=113>



# County Health Rankings & Roadmaps is a collaboration between the Robert Wood Johnson Foundation and the University of Wisconsin Population Health Institute.

[Countyhealthrankings.org](http://Countyhealthrankings.org)

