

Lobby

Color with us using the annotate tool
Click **view** options near the top of your screen, choose **annotate** pick your tool & ink color
Have fun!





Northwest (HHS Region 10)

PTTC

Prevention Technology Transfer Center Network

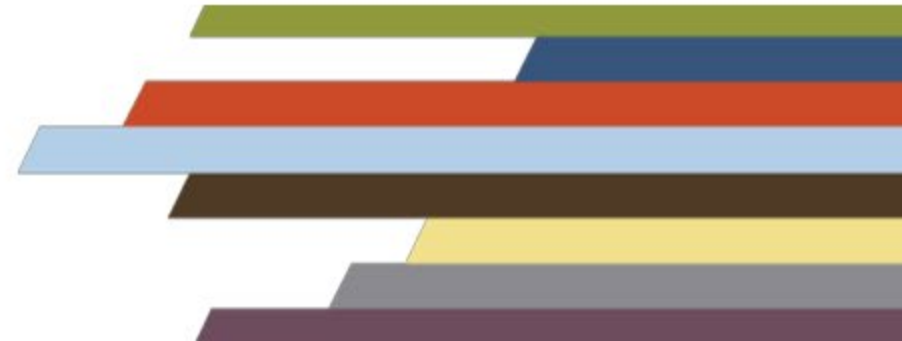
Funded by Substance Abuse and Mental Health Services Administration



Health Equity Across Systems and Sectors:

Tales From A Colorado Journey

*Marc Morgan – Community Organizing for Prevention
Manager, Colorado Department of Public Health and
Environment*





Northwest (HHS Region 10)

PTTC

Prevention Technology Transfer Center Network
Funded by Substance Abuse and Mental Health Services Administration



The Northwest PTTC is a partnership led by the Social Development Research Group (SDRG) at University of Washington (UW) School of Social Work in collaboration with the Prevention Science Graduate Program at Washington State University (WSU), and the Center for the Application of Substance Abuse Technologies (CASAT) at the University of Nevada, Reno (UNR).

Northwest partnering institutes share a vision to expand the impact of community-activated prevention by equipping the prevention workforce with the power of prevention science.



Prevention Science
Graduate Program
WASHINGTON STATE UNIVERSITY



Disclaimer

This on-the-spot consultation is supported by SAMHSA of the U.S. Department of Health and Human Services (HHS) through SAMHSA Cooperative Agreement # H79SP080995. The contents are those of the author(s) and do not necessarily represent the official views of, nor an endorsement, by SAMHSA/HHS, or the U.S. Government.

This presentation is being recorded and archived, and it will be available for viewing in 10 business days. Please contact the webinar facilitator if you have any concerns or questions.

Upcoming Event!

- A Regional Conversation – Elevating Prevention Voices in Region 10 Opioid Settlement Decisions
 - July 27, 2022, from 11:30 a.m. – 1:00 p.m. Pacific Time

Visit the PTTC Website to Learn More & Register: <https://bit.ly/3BkAc86>

Housekeeping



- Chat Pod
- For technical support email Clarissa at clamyuen@casat.org
- On-the-Spot recording and presentation slides

Agenda

- State System Landscape
- Systems Change and Deep Equity
- Environmental Strategies
- Menu of Strategies
- Example from Community

State System Landscape



CONNECTEDNESS

Create connections between people and between systems to improve access to supports.



OUR MISSION

Creating connected and thriving communities free from violence and injury.

COMMUNITY AS THE DRIVING FORCE
ROOTED IN HONESTY - RESPECT - INTEGRITY

ECONOMIC STABILITY

Support financial stability through equitable economic opportunities and access.



BEHAVIORAL HEALTH

Foster social and emotional well-being by preventing substance misuse and implementing systems changes that support people through mental health challenges.



SOCIAL NORMS

Promote positive social norms about help-seeking, community care, and social and emotional well-being.



CENTERED IN RACIAL JUSTICE AND HEALTH EQUITY

NEXT STEPS TO CENTER RACIAL JUSTICE

- 1 Deepen understanding & actions to ensure intersectional identities are celebrated and supported.
- 2 Outline racial equity and inclusion framework within our current protective factor priorities.
- 3 Partner with communities to align our racial justice and health equity work within each priority to their work.



COMMUNITIES THAT THRIVE WILL PREVENT:

- Suicide
- Substance misuse and overdose
- Motor vehicle injuries and fatalities
- Sexual violence and teen dating violence
- Child maltreatment
- Bullying
- Teen pregnancy
- Intimate partner violence
- Traumatic brain injuries
- Older adult falls

WE ARE COMMITTED TO ADDRESSING INJUSTICE IN COLORADO THROUGH OUR PROGRAMS AND PRACTICES. A COLORADO FREE FROM INJURY AND VIOLENCE NEEDS RACIAL JUSTICE AND HEALTH EQUITY AT ITS CENTER.

Purpose of Funding

- **The aim of this funding is to increase and sustain health equity by:**
 - **1. reducing risk or increased protective factors** commonly associated with underage substance use as measured by the Healthy Kids Colorado Survey and other statewide data sources.
 - **2. delay initiation and reduced current use of marijuana, alcohol, and opioids** among middle and/or high school students.
 - **3. reduce incidence of violence,** including suicide.
 - **4. improve mental well-being.**
- Which will....



State System Landscape

- **Marijuana Tax Cash Fund (~\$9 million) substance misuse prevention**
 - ~\$7.3 million to communities
 - ~\$1.6 Million to Evaluation, Training, CTC experts (University of Colorado, Rocky Mountain Public Health Training Center, University of Washington)
 - ~\$400k to Colorado Department of Public Health and Environment (4.5 staff to support grant)

Social Determinants and Deep Equity

 the praxis project



MARKETING & RETAIL ENVIRONMENT HOUSING
CRIMINAL LEGAL SYSTEM FOOD SYSTEM CIVIC PARTICIPATION
COMMUNITY SAFETY HEALTHCARE PARKS & REC SPACES REPRODUCTIVE LIFE
SOCIOECONOMIC ENVIRONMENT TRANSPORTATION SYSTEM COMMUNITY INFRASTRUCTURE EDUCATION SYSTEM
IMMIGRATION CLIMATE PHYSICAL ENVIRONMENT (WATER, AIR, & SOIL)

HETEROSEXISM
CAPITALISM **RACISM** SEXISM
ABLEISM

THE SOCIAL DETERMINANTS OF HEALTH

Systems Change and Deep Equity: Why

“Systems Change pursued without Deep Equity is, in our experience, dangerous and can cause harm, and in fact leaves some of the critical elements of systems unchanged. And “equity” pursued without “Systems Change” is not “deep” nor comprehensive at the level of effectiveness currently needed.

Both need each other. The challenge in effectively combining these domains of practice is that often many systems change actors—particularly those with access to publishing, funding, and other critical resources to achieve depth and scale—do not seem to understand nor are they embedding Deep Equity into their work. Or when “equity” is addressed, it is piecemeal, seems an afterthought, and/or is shallow. Actors pursuing and advancing critically needed systems change efforts often bring limited awareness to address or adequately embed equity. This is the wound we must heal.” [Sheryl Petty, Change Elemental](#)

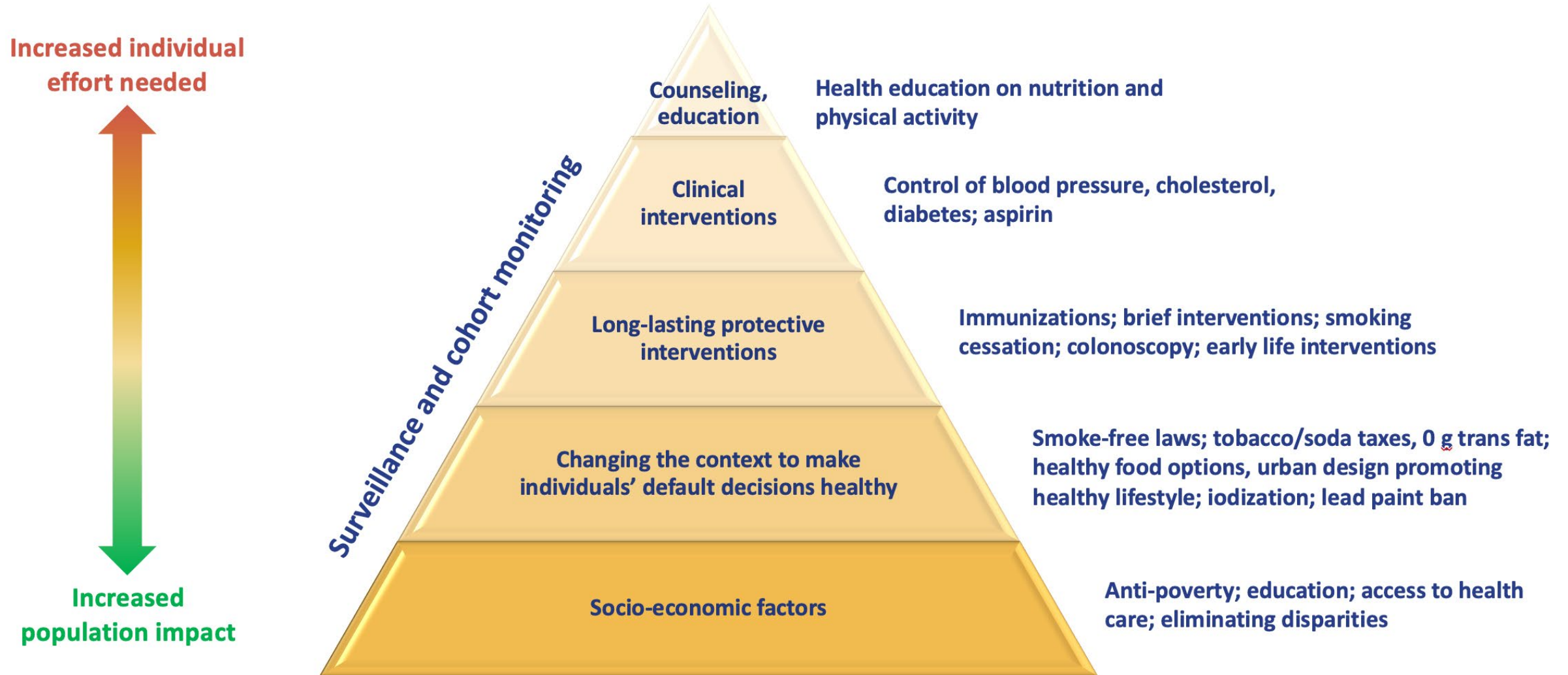
Environmental Strategies



“Change does not roll in on
the wheels of inevitability,
but comes through
continuous struggle.”

Martin Luther King Jr.

The Health Impact Pyramid



THE MENU OF SYSTEMS CHANGE STRATEGIES

What is the Menu of Systems Change Strategies?

- Created in partnership by CDPHE and Colorado School of Public Health as well as University of Washington
- Intended to help guide community-based primary prevention efforts that prioritize population health strategies with the goal of reducing risk factors and improving protective factors for youth in Colorado
 - Systems-level change is important, but hard to simply for communities
- Purpose: highlight evidence-based and evidence-informed strategies at the community or societal-level (e.g., public policy, systems improvements)
- Used by COFP coalitions to formulate action plans

THE MENU OF SYSTEMS CHANGE STRATEGIES

How was it developed?

- Strategies and alignment to R/P factors identified using registries and lists
- Had to be supported by at least one empirical study that:
 - Showed causation or correlation to a risk/protective factor
 - Utilized rigorous methodology (e.g., RTC)
 - Accounted for threats to internal and external validity
 - Demonstrates sustained outcomes

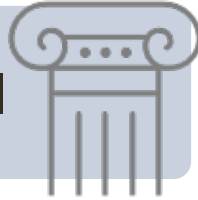


Introduction to Community and Societal-Level Strategies Menu

- *A menu of community and societal-level primary prevention **SYSTEMS CHANGE** strategies with the goal of reducing risk factors and improving protective factors for adolescent substance abuse in Colorado.*
- [Menu of Strategies](#)

COMMUNITY CHALLENGES

Language too scientific/technical



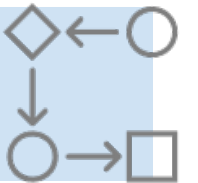
Too many related resources in different places



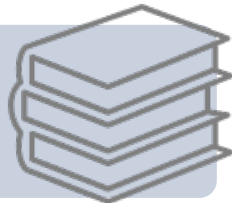
More focus on research to action



Not always linked to key COFP principles



Lacking practical resources



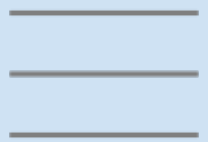
Hard to update



Hard to frame in local context



Layout not engaging



REIMAGINING THE MENU

In response:



Fully updated, comprehensive website

Refocus on bridging research to action



Expand reach outside of COFP

Consider sustainability 



INTRODUCING THE WEBSITE & NEW MENU

- **Integrates:**
 - **Core components of systems change more explicitly**
 - **Case studies**
- **Walkthrough main sections**

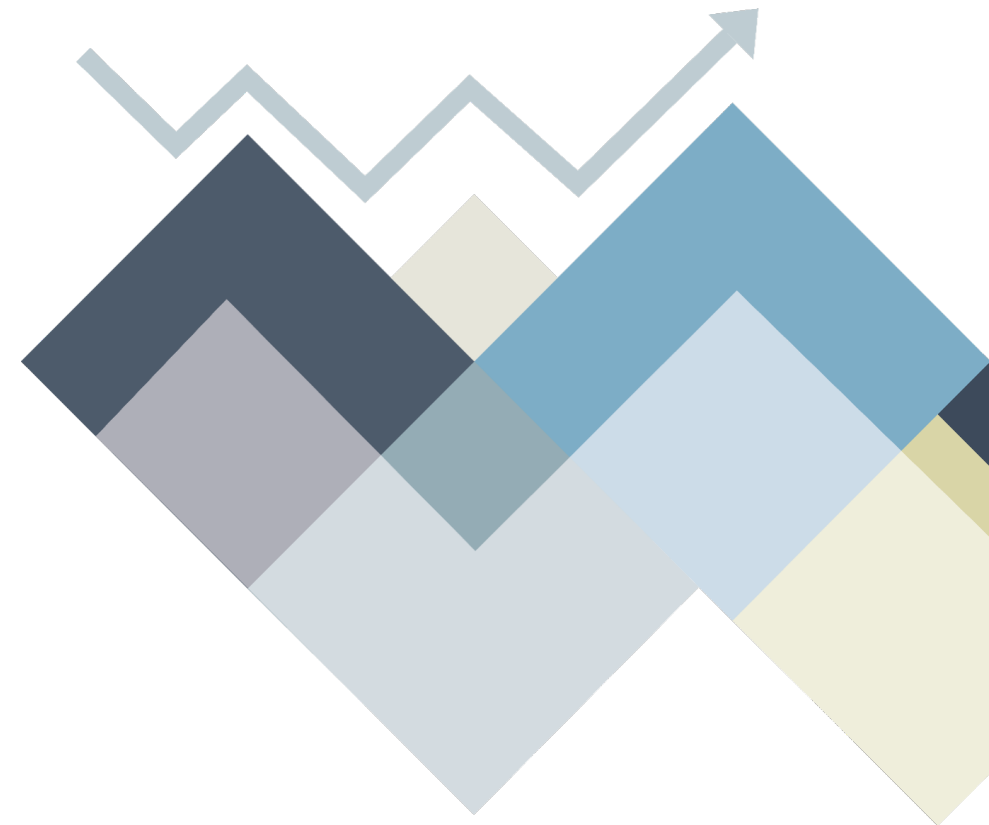
[Website Preview](#)



WEBSITE LAUNCH

- **Currently in development**
- **Anticipated launch early July 2022**
- **Update research annually**
- **Regularly update resources**

**To receive an email
when the site is live,
provide your
information:**



Example from Community



Successes: Community Outcomes



CTC fosters multi-sector communication and collaboration.

- Community organizations communicate and partner more
- Share resources and build bridges
- Grow a network focused on the common goals of reducing risk and promoting protection in youth



CTC increases authentic community and youth engagement.

- Unite over shared goals and forge more authentic connection between adults and youth
- Paving the way for youth to lead in prevention and address the real-world challenges they face daily



CTC helps bring science to life across communities.

- Communities increasingly using data to make local decisions.
- Implementing evidence-based programs, practices, and policies aligned to local issues.

Health Education Policy in JeffCo Schools



References

- Communities that Care - <https://www.communitiesthatcare.net/>
- Menu of Strategies - <https://docs.google.com/document/d/1xTbajmBI7-JKStKz-bx51OnxUwutCy4fLQl8NnPmwZs/edit>
- CDPHE Community Organizing for Prevention - <https://cdphe.colorado.gov/prevention-and-wellness/injury-prevention/cofp>
- Change Elemental - <https://changeelemental.org/resources/systems-change-and-deep-equity-monograph/>
- Jefferson County CTC - <https://sites.google.com/prod/view/jefferson-county-ctc/home?authuser=0>
- Dr. Tom Frieden - <https://www.tomfriedenpublichealth.net/themespublications/addressing-health-injustice-racism-and-disparities>
- Praxis Project - <https://www.thepraxisproject.org/social-determinants-of-health>
- CTC Colorado Impact Report - https://cspv.colorado.edu/wp-content/uploads/2020/05/CTC_ImpactReport.pdf

On-the-Spot Consultation Feedback

Please click on the link in the chat to complete a very brief online feedback form!

Thank you!





Contact Information

Marc Morgan – Marc.Morgan@state.co.us

Northwest PTTC

Michelle Frye-Spray – mfryespray@casat.org





Thank you!

