

# The Webinar Is Now Live

**This webinar is being  
recorded**

**Your audio will remain muted**



# Technical Information

This webinar is being recorded and archived, and will be available to all webinar participants. Please contact the webinar facilitator if you have any concerns or questions.

This training was developed under the Substance Abuse and Mental Health Services Administration's Prevention Technology Transfer Center task order. Reference # 1H79SP081018.

For training use only.

*Funding for this presentation was made possible by SAMHSA grant no. 1H79SP081018. The views expressed by speakers and moderators do not necessarily reflect the official policies of HHS; nor does mention of trade names, commercial practices, or organizations imply endorsement by the U.S. Government.*



# Housekeeping

The **Chat and Questions** chat box to the right of the presentation is for general discussion. Use this space to...

- Interact with other participants
- Submit questions for the presenter(s)
- Respond to discussion questions

These messages are public and can be seen by everyone in the room.



Chat and Questions (Everyone)

[Empty chat area]

[Input field] [Send icon]

Everyone



Today's Audio

Please connect audio via phone OR computer - not both. 888-858-6021; Conf code: 691 584 5839

If you dialed in, you need to turn your computer speakers off or you will hear an echo.

Additionally, if you are connecting via phone, please MUTE your device to minimize

Tech Support

[Empty chat area]

[Input field] [Send icon]

# Housekeeping

If you have any technical difficulties, you can type your issue in the **Tech Support** chat box found below the slides.

These messages will only be seen by Tech Support staff.



Today's Audio [menu icon]

Please connect audio via phone OR computer - not both. 888-858-6021; Conf code: 691 584 5839

If you dialed in, you need to turn your computer speakers off or you will hear an echo.

Additionally, if you are connecting via phone, please MUTE your device to minimize

Tech Support [menu icon]

[Empty chat box]

[Input field] [Send icon]

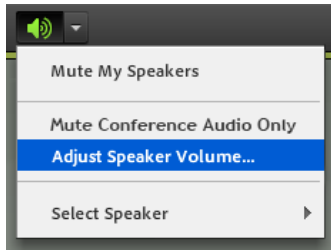
Chat and Questions (Everyone) [menu icon]

[Empty chat area]

[Input field] [Send icon]

Everyone

# Housekeeping



If you need to adjust your speaker audio, click the dropdown arrow next to the speaker icon and click **Adjust Speaker Volume**.



If you need to troubleshoot your computer audio you can access the **Audio Setup Wizard** by clicking the *Meeting* button.

**Today's Audio** information is available below the slides. If you are calling in on your phone, please leave your line muted.



**Today's Audio**

Please connect audio via phone OR computer - not both. 888-858-6021; Conf code: 691 584 5839

If you dialed in, you need to turn your computer speakers off or you will hear an echo.

Additionally, if you are connecting via phone, please MUTE your device to minimize

**Tech Support**

[Empty chat area]

**Chat and Questions (Everyone)**

[Empty chat area]

Everyone

# Housekeeping

**Webinar  
Recording**  
available online  
in 2-3 weeks at  
[bit.ly/ce-pttc](http://bit.ly/ce-pttc)

## After the webinar:

Complete the  
brief, 10-question  
**Evaluation Form**



to gain access to

### **Resource Page**

1. List of resources shared today
2. PowerPoint slides
3. Link to request Certificate of Attendance



# Welcome



## Central East PTTC Webinar: Examining the Social Determinants of Health: A Prevention Perspective

*The Central East PTTC is housed at the Danya Institute in Silver Spring, MD*

Renata Henry  
Executive Director

Deborah Nixon Hughes  
Project Director



Central East (HHS Region 3)

PTTC

### Each TTC Network includes 13 centers.\*



Network Coordinating Office

National American Indian and Alaska Native Center

National Hispanic and Latino Center

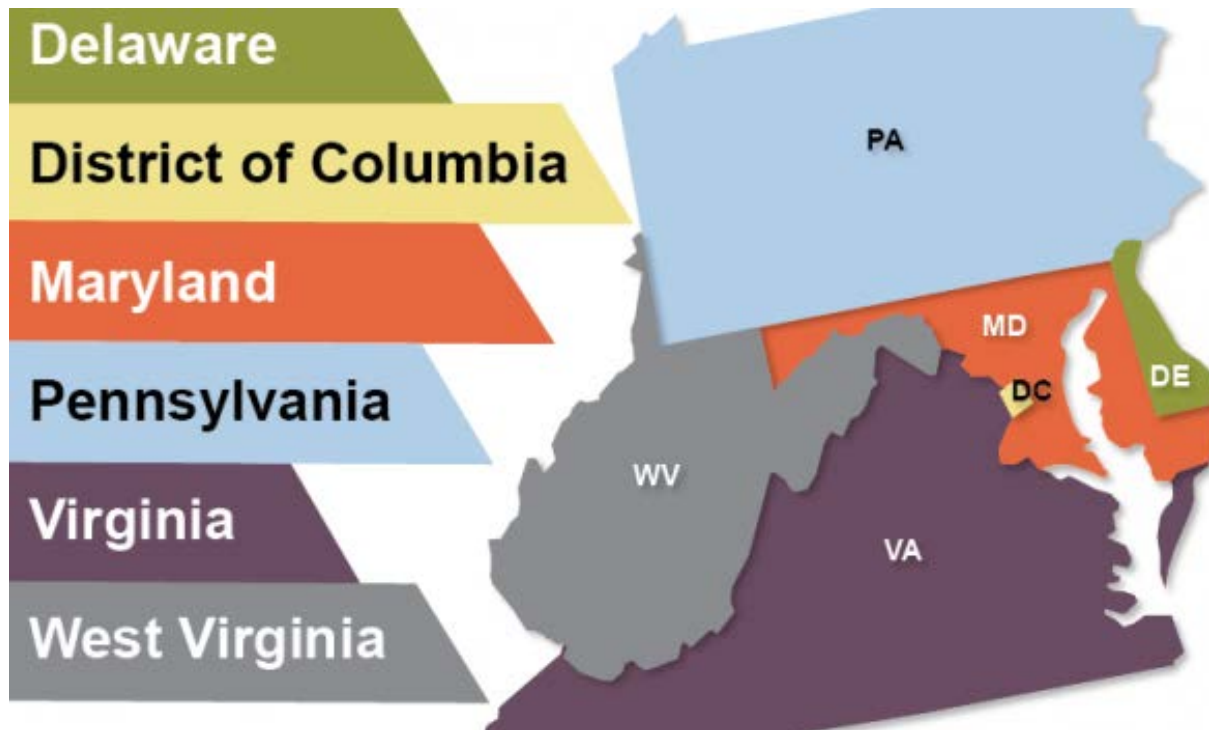
10 Regional Centers (aligned with HHS regions)

*\*The ATTC Network also includes 4 international HIV centers funded by the President's Emergency Plan for AIDS Relief.*



# Central East Region

## HHS REGION 3



# What We Do

- **Accelerate** the adoption and implementation of evidence-based and promising treatment and recovery-oriented practices and services
- **Strengthen** the behavioral health awareness, knowledge, and skills of the health care and prevention workforce that address the needs of people with behavioral health disorders
- **Foster regional** and national alliances among culturally diverse practitioners, researchers, policy makers, funders, and the recovery community
- **Ensure** the availability and delivery of publicly available, free of charge, behavioral health training and technical assistance to health care and prevention professionals



# PTTC Mission



To Strengthen **the Capacity of the Workforce to Deliver Evidence-Based Prevention Strategies and Facilitate Opportunities for Preventionists to Pursue New Collaboration Opportunities, which include Developing Prevention Partnerships and Alliances**



# Central East PTTC Specialty Area

Engaging and Collaborating with Primary Care Providers for Substance Use Prevention



# Eligibility

Behavioral health and health care providers, consumers, families, state and local public health systems and other stakeholders

**Consistent with  
Regional, State  
and Local  
Needs**

**No cost**

**Data Driven**

**EBPs provided  
by Subject  
Matter Experts**



# PTTC Focus Areas

- Opioid/harm reduction strategies
- Suicide prevention and substance use overdoses
- Youth vaping/tobacco
- Youth alcohol and suicide
- Health equity and the elimination of disparities
- Trauma
- Workforce leadership development series-  
strategic planning/SPF; data-informed decision-  
making; environmental strategies



# Upcoming Webinars

- Opioid and Alcohol Misuse: The Risk of Suicide-  
May 14
- Social Determinants of Health Part 2 - May 20
  - A Prevention Approach to Working with the Social Determinants of Health
- Motivational Interviewing: African American Males - May 27

***ALL WEBINARS AT 1:00 PM ET***



# Other Resources in Region 3



Central East (HHS Region 3)

---

ATTC

Addiction Technology Transfer Center Network  
Funded by Substance Abuse and Mental Health Services Administration



Central East (HHS Region 3)

---

MHTTC

Mental Health Technology Transfer Center Network  
Funded by Substance Abuse and Mental Health Services Administration



Central East (HHS Region 3)

---

PTTC





Central East (HHS Region 3)

PTTC

Prevention Technology Transfer Center Network

Funded by Substance Abuse and Mental Health Services Administration

# Examining the Social Determinants of Health: A Prevention Perspective

April 22, 2020

Dawn M. Thomas

Prevention Systems Manager



# Presenter: Dr. Dawn Thomas



- Prevention Systems Manager with the Ohio Department of Mental Health & Addiction Services (OhioMHAS)
- More than 25 years of public service focused on prevention, training, mental health and other social services programming
- Experienced in event planning; program development, coordination, and implementation; fostering and promoting close working relationships between state, county, and local social service systems/agencies.
- Previously served as the Project Director for Ohio's Strategic Prevention Framework Partnerships for Success (SPF-PFS) State and Tribal Initiative Grant.
- Passionate about working with underserved communities that experience health disparities and learning best practices, policies, and strategies for providing culturally appropriate services to achieve health equity.

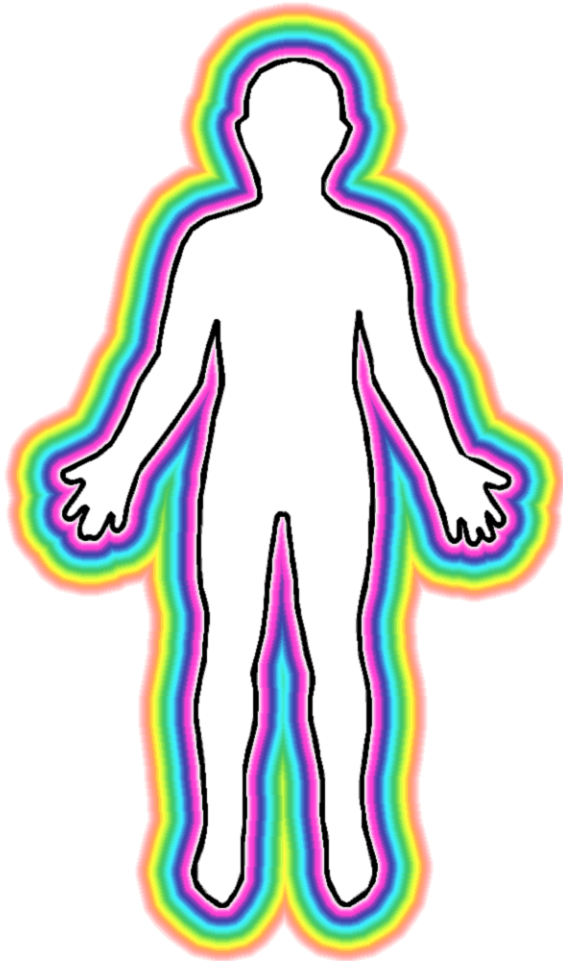


# Learning Objectives

- Provide a background and overview of the Social Determinants of Health (SDOH)
- Review the 5 areas of the SDOH and how they impact health outcomes
- Define and differentiate health equity terminology
- Review and summarize the significance of SDOH to increase health and wellness



# SOMETHING TO THINK ABOUT...



- Who are YOU?
- What makes up who YOU are?
- What are all the aspects of YOU?



# Determinants of Health



- Social and Economic Environment
- Physical Environment
- Person's individual Characteristics and Behaviors



# Social Determinants of Health



Places where we are born, live, learn, work, play and age



Broad range of personal, social, economic and environmental factors that contribute to individual and population health



Economic and social conditions that affect the health of people and communities



Shaped by the distribution of money, power and resources at global, national and local levels.



# Background SDOH



- Healthy People 2020 highlights the importance of addressing SDOH
- Overarching goals for the decade (1/4)
- “Create social and physical environments that promote good health for all”

# Historical Perspective



- World Health Organization (WHO)
  - Commission on SDOH published report
  - Closing the gap in a generation: Health equity through action on the SDOH
- National Partnership for Action to End Health Disparities
- National Prevention and Health Promotion Strategy



# Social Determinants of Health

## Healthy People 2020



# Social Determinants of Health

- Income and social status
- Employment and working conditions
- Education and literacy
- Childhood experiences



# Social Determinants of Health

- Physical environments
- Social supports and coping skills
- Healthy behaviors
- Access to health services



# Race, Place, Health, SES



Being in a disadvantaged group is associated with having a lower level of educational attainment



Having a lower level of educational attainment is associated with worse health status



Typically the lower a group's social position, the worse the average health status of its members



Racial bias affects health



# Social Determinants of Health

- **MONEY**



- **POWER**

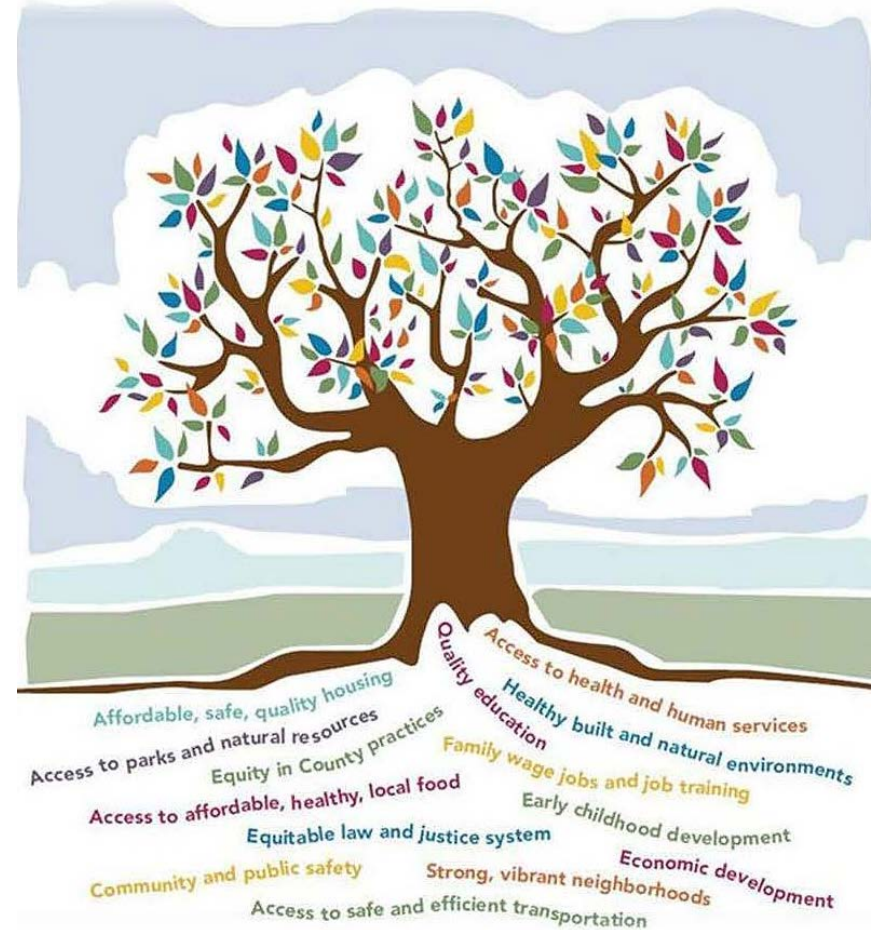


- **RESOURCES**



# Social Determinants of Health

- These conditions determine a person's chances of maintaining good health
- Sometimes referred to “the causes of the causes” or “root causes”
- How social and economic structures shape the health of populations



# WHAT DO YOU THINK?

How have the Social Determinants of Health impacted your work as a Preventionist?



# What Are Health Disparities?

Particular type of health difference that is closely linked with social, economic, and/or environmental disadvantage



Health Disparities adversely affect groups of people who have systematically experienced greater obstacles to health



# Health Disparities

Racial or Ethnic  
group

Religion;  
Socioeconomic  
Status

Gender; Age

Mental Health;  
Cognitive  
Sensory

Physical  
Disability

Sexual  
Orientation or  
Gender Identity

Geographic  
Location

Characteristics  
historically linked  
to discrimination  
or exclusion

# What are Health Disparities?



Differences in the presence of disease, health outcomes, or access to health care between population groups



These differences are often referred to as a “Disparity”, “Inequity”, or “Inequality”



Health Disparities and Health Inequalities are the same thing



# Health Disparities & Health Inequalities

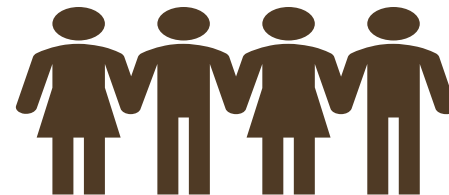


Social inequalities in health are significant *variations* in health outcomes as measured by life expectancy at birth, infant mortality, morbidity, etc. across different social groups



# What Are Health Inequities?

- Differences in health that are not only unnecessary and avoidable but are also considered unfair and unjust
- Rooted in social injustices that make some population groups more vulnerable to poor health than other groups



# Health Equity

When everyone has the OPPORTUNITY to obtain their full health potential and no one is disadvantaged from achieving this potential because of their social position or other socially determined circumstance



The ABSENCE of systematic disparities in health between, and within social groups that have different levels of underlying social advantages or disadvantages—that is, different positions in a social hierarchy

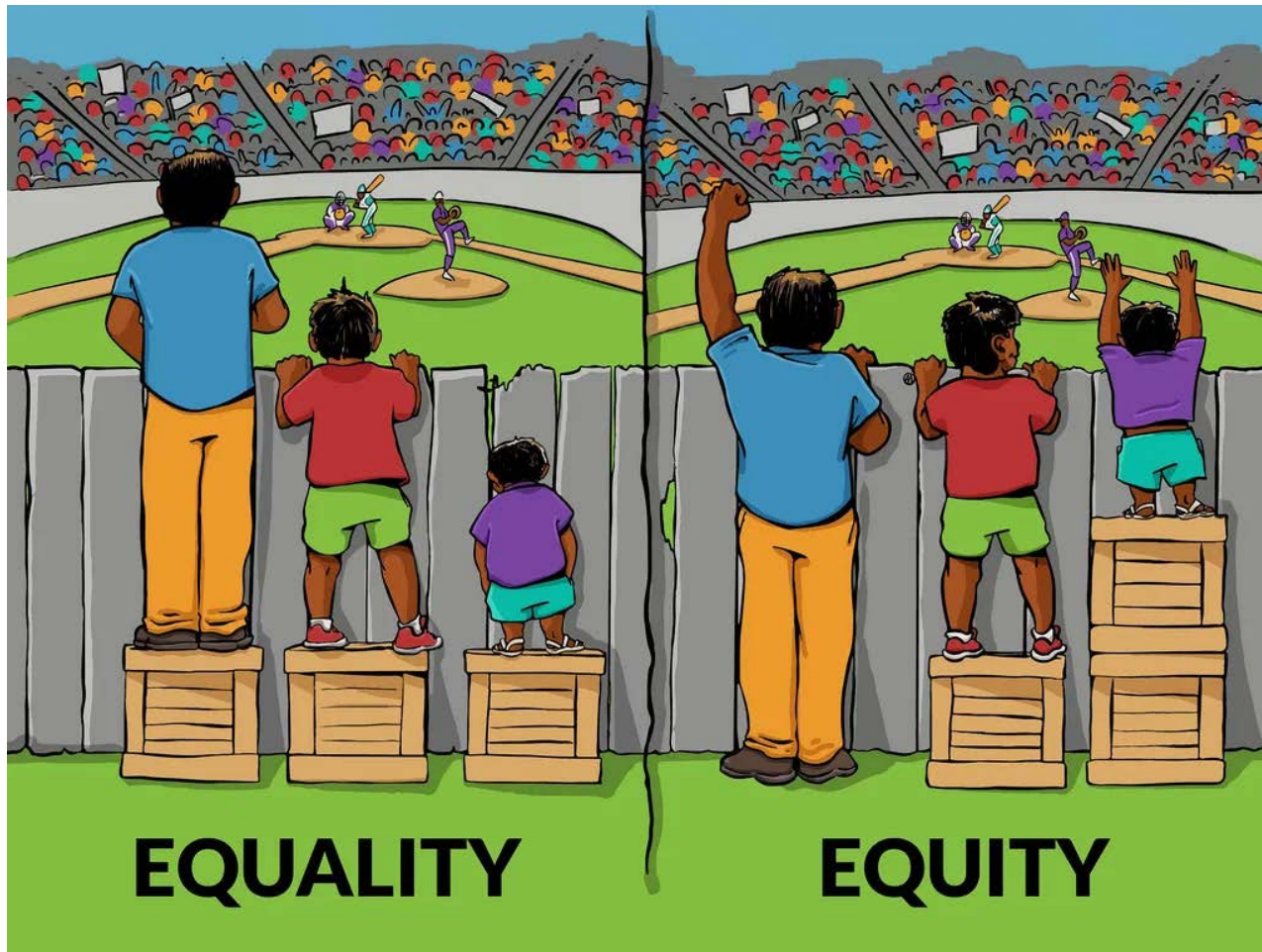
# Health Equity

Achieving the highest level of health for all people

Focused societal efforts to address avoidable inequalities by equalizing the conditions for health for all groups, especially for those who have experienced socioeconomic disadvantage or historical injustices.



# Health Equality & Health Equity



# Health Equity vs. Health Equality





# Health Equality

# Health Equity

## EQUALITY

## EQUITY

Giving **EVERYONE** the **SAME** thing

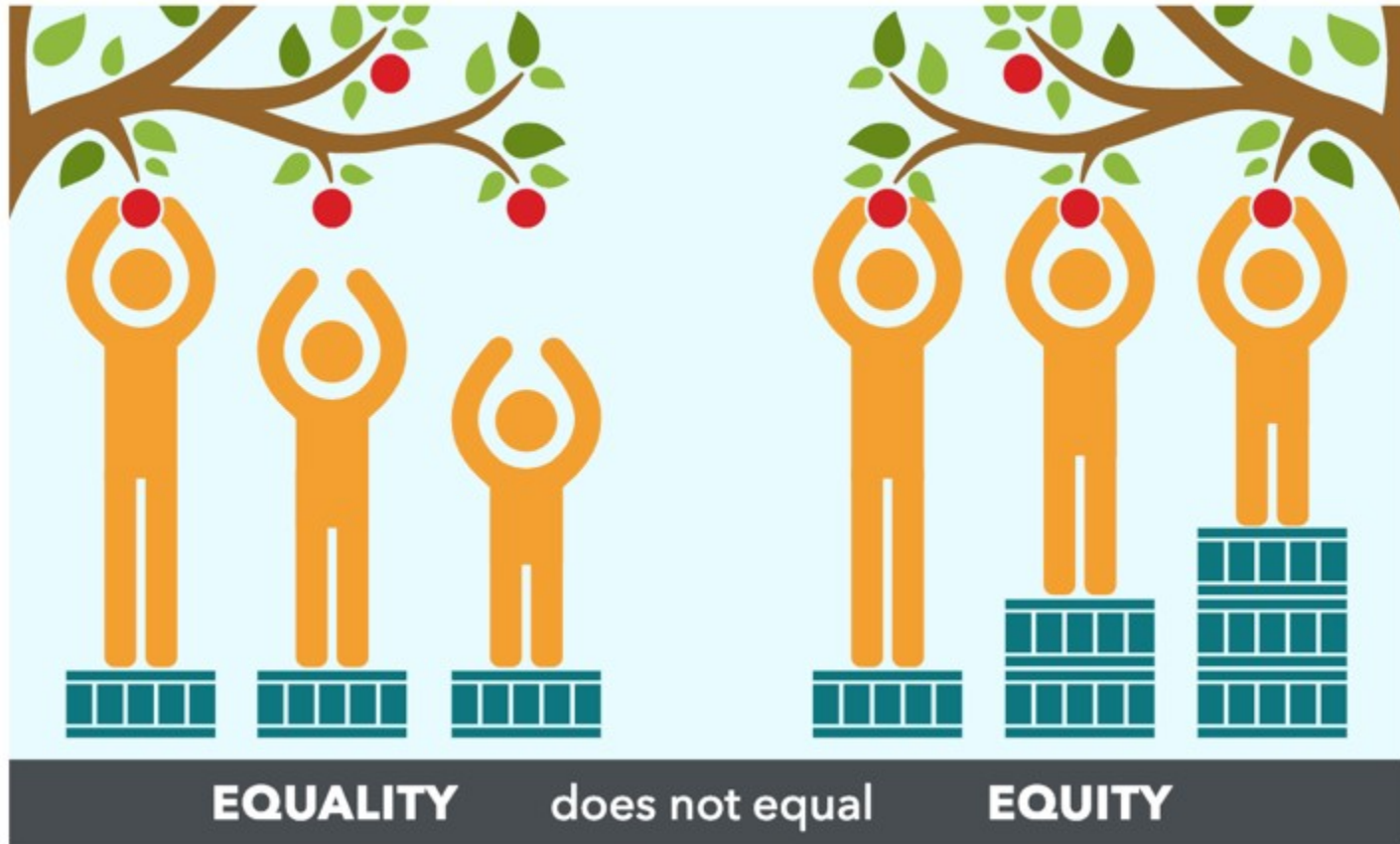
Access to the **SAME OPPORTUNITIES**

It only works **IF** everyone starts from the same place

We must first ensure equity before we can enjoy equality



# Equality Vs. Equity



# Truth Is... Race Matters

We must confront and acknowledge history to eliminate health disparities.



Blatant discriminatory policies of our nation's past have made it impossible for certain populations/groups of Americans to obtain optimal health.

Legacy of our history DID NOT DISAPPEAR with signing of laws.

Role of racism, discrimination, and bias have perpetuated generational cycles of poor health and risky behaviors.



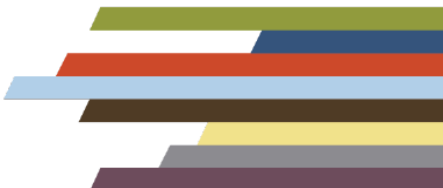
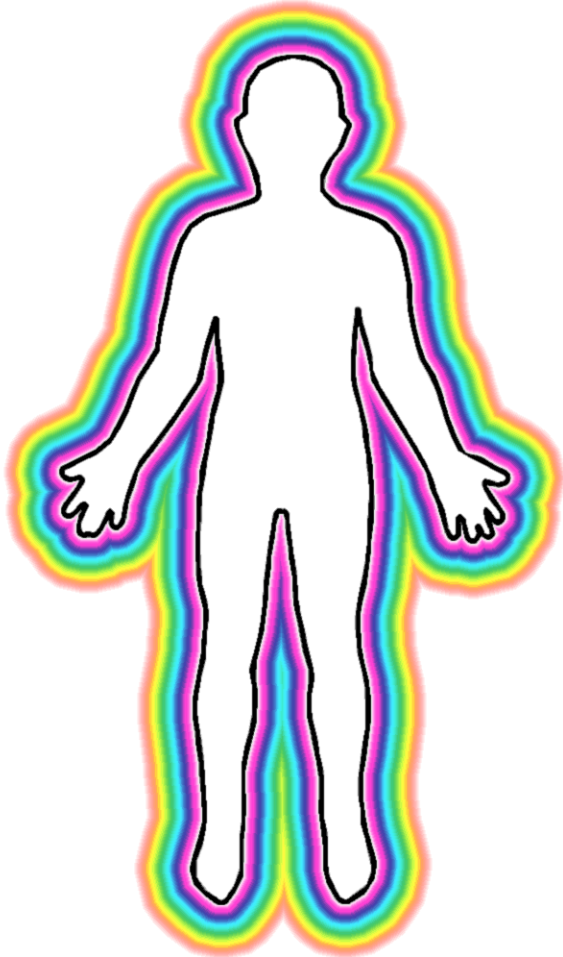
# Social Determinants of Health

Individual's PLACE in society

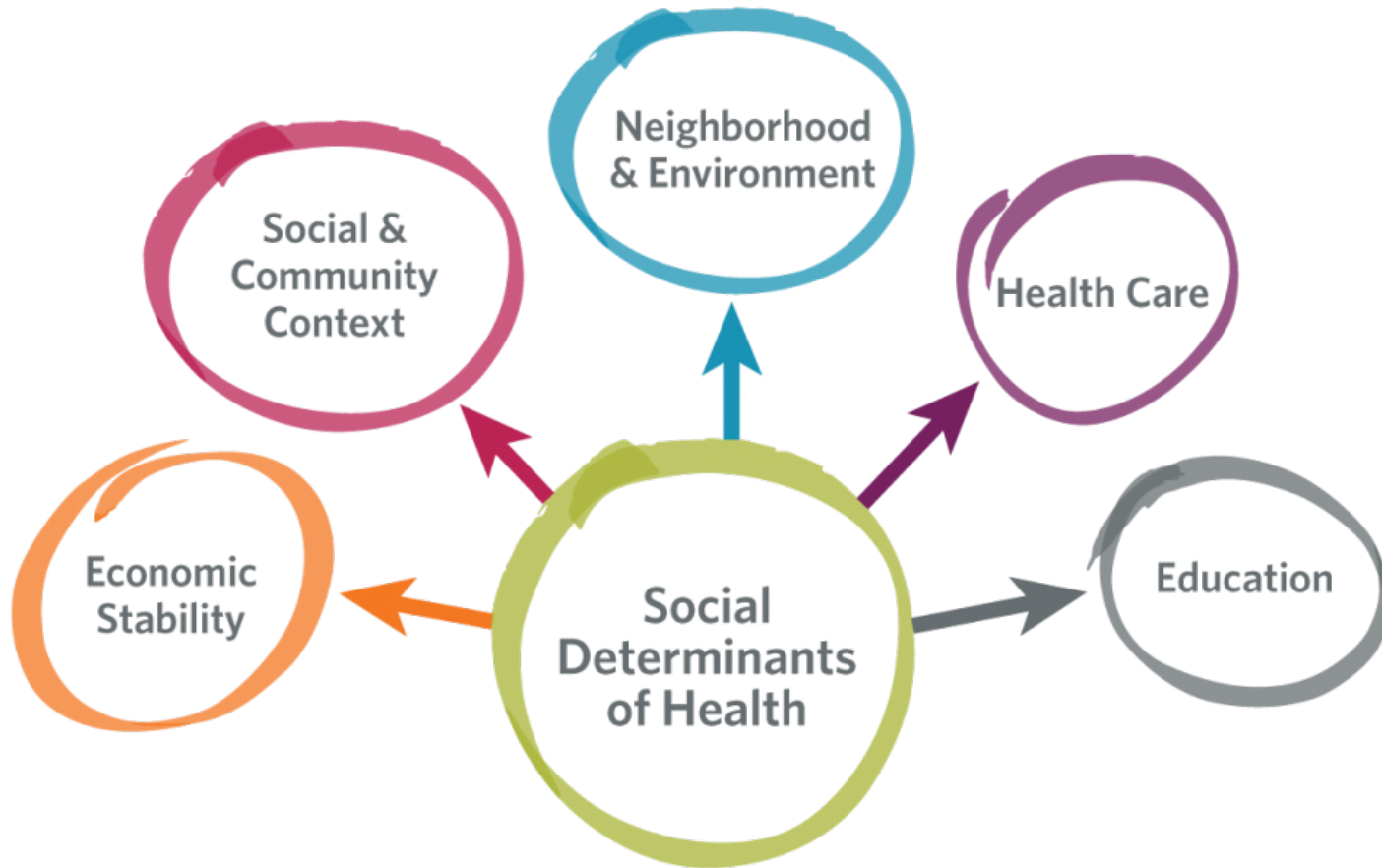
Experiences of Discrimination, Historical Trauma are also important SDOH



# Time to Share



# Quick Review



# Where Do We Begin?

- Learn the language
- Utilize the Community Wheel/Sectors
- Build on existing partnerships
- Reach out to public health partners
- What is your contribution?



# QUESTION/POLL

Identify 2 ways you can begin to initiate connections to Social Determinants Of Health in your Prevention work?





# Evaluation

***Your feedback is important!***

## **Evaluation Form**

To complete the evaluation form, go to <https://ttc-gpra.org/P?s=403153> or scan the QR code.



Evaluation Form  
QR Code

## **Resource Page**

Upon completion of the evaluation form, your browser will be redirected to with a link to the resources from today's webinar, which will include a PDF of the PowerPoint slides.

## **Certificate of Attendance / Contact Hour**

For viewing the live webinar today, you can receive up to one (1) NADAAC contact hour of attendance. You may request a certificate from a link provided at the TOP of the RESOURCES PAGE. Certificates must be requested within 1 week of the webinar. Certificates will be processed within 30 days.

## **Recording**

A recording of today's webinar will be available online at <http://bit.ly/ce-pttc> in 2-3 weeks.

# Contact Information



**Dawn M. Thomas, Ph.D., OCPC**

*Prevention Systems Manager*

*Ohio Mental Health & Addiction Services*

(614)644-8327

[Dawn.Thomas@mha.ohio.gov](mailto:Dawn.Thomas@mha.ohio.gov)

[dawnthomas10@gmail.com](mailto:dawnthomas10@gmail.com)

*#InThisTogether*



# Contact Us



Central East (HHS Region 3)

PTTC

Prevention Technology Transfer Center Network  
Funded by Substance Abuse and Mental Health Services Administration

*a program managed by*



Central East PTTC website:  
[www.pttcnetwork.org/centraleast](http://www.pttcnetwork.org/centraleast)

Danya Institute website:  
[www.danyainstitute.org](http://www.danyainstitute.org)

Deborah Nixon-Hughes, Director:  
[dhughes@danyainstitute.org](mailto:dhughes@danyainstitute.org)

Danya Institute email and phone:  
[info@danyainstitute.org](mailto:info@danyainstitute.org)  
(240) 645-1145

*Funding for this presentation was made possible by SAMHSA grant no. 1H79SP081018. The views expressed by speakers and moderators do not necessarily reflect the official policies of HHS; nor does mention of trade names, commercial practices, or organizations imply endorsement by the U.S. Government.*



Central East (HHS Region 3)

PTTC

