

The Webinar Is Now Live

**This webinar is being
recorded**

Your audio will remain muted



Technical Information

This webinar is being recorded and archived, and will be available to all webinar participants. Please contact the webinar facilitator if you have any concerns or questions.

This training was developed under the Substance Abuse and Mental Health Services Administration's Prevention Technology Transfer Center task order. Reference # 1H79SP081018.

For training use only.

Funding for this presentation was made possible by SAMHSA grant no. 1H79SP081018. The views expressed by speakers and moderators do not necessarily reflect the official policies of HHS; nor does mention of trade names, commercial practices, or organizations imply endorsement by the U.S. Government.



Housekeeping

The **Chat and Questions** chat box to the right of the presentation is for general discussion. Use this space to...

- Interact with other participants
- Submit questions for the presenter(s)
- Respond to discussion questions

These messages are public and can be seen by everyone in the room.



Chat and Questions (Everyone)

[Empty chat area]

[Input field] [Send icon]

Everyone



Today's Audio

Please connect audio via phone OR computer - not both. 888-858-6021; Conf code: 691 584 5839

If you dialed in, you need to turn your computer speakers off or you will hear an echo.

Additionally, if you are connecting via phone, please MUTE your device to minimize

Tech Support

[Empty chat area]

[Input field] [Send icon]

Housekeeping

If you have any technical difficulties, you can type your issue in the **Tech Support** chat box found below the slides.

These messages will only be seen by Tech Support staff.



Today's Audio

Please connect audio via phone OR computer - not both. 888-858-6021; Conf code: 691 584 5839

If you dialed in, you need to turn your computer speakers off or you will hear an echo.

Additionally, if you are connecting via phone, please MUTE your device to minimize

Tech Support

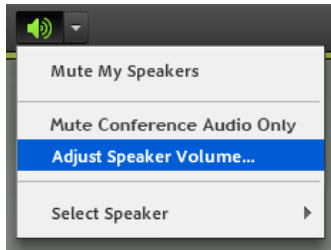
[Empty chat box with a text input field at the bottom]

Chat and Questions (Everyone)

[Empty chat area with a text input field at the bottom]

Everyone

Housekeeping



If you need to adjust your speaker audio, click the dropdown arrow next to the speaker icon and click **Adjust Speaker Volume**.



If you need to troubleshoot your computer audio you can access the **Audio Setup Wizard** by clicking the *Meeting* button.

Today's Audio information is available below the slides. If you are calling in on your phone, please leave your line muted.



Today's Audio

Please connect audio via phone OR computer - not both. 888-858-6021; Conf code: 691 584 5839

If you dialed in, you need to turn your computer speakers off or you will hear an echo.

Additionally, if you are connecting via phone, please MUTE your device to minimize

Tech Support

[Empty chat area]

Chat and Questions (Everyone)

[Empty chat area]

Everyone

Housekeeping

**Webinar
Recording**
available online
in 2-3 weeks at
bit.ly/ce-pttc

After the webinar:

Complete the
brief, 10-question
Evaluation Form



to gain access to

Resource Page

1. List of resources shared today
2. PowerPoint slides
3. Link to request Certificate of Attendance



Welcome



Central East PTTC Webinar:

A Prevention Approach to Working with the Social Determinants of Health

The Central East PTTC is housed at the Danya Institute in Silver Spring, MD

Renata Henry
Executive Director

Deborah Nixon Hughes
Project Director



Central East (HHS Region 3)

PTTC

Each TTC Network includes 13 centers.*



Network Coordinating Office

National American Indian and Alaska Native Center

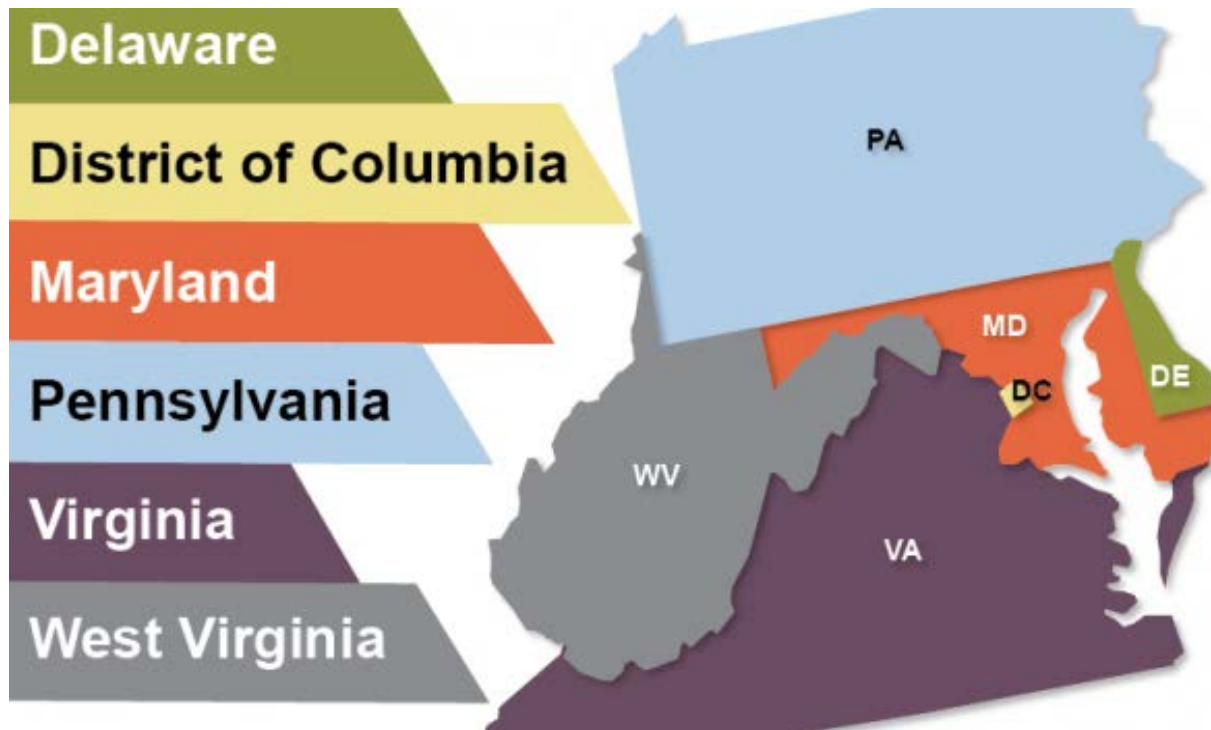
National Hispanic and Latino Center

10 Regional Centers (aligned with HHS regions)

**The ATTC Network also includes 4 international HIV centers funded by the President's Emergency Plan for AIDS Relief.*

Central East Region

HHS REGION 3



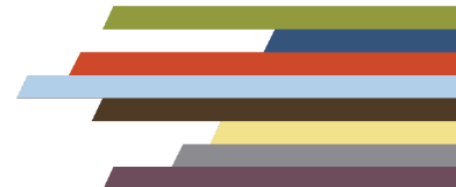
What We Do

- **Accelerate** the adoption and implementation of evidence-based and promising treatment and recovery-oriented practices and services
- **Strengthen** the behavioral health awareness, knowledge, and skills of the health care and prevention workforce that address the needs of people with behavioral health disorders
- **Foster regional** and national alliances among culturally diverse practitioners, researchers, policy makers, funders, and the recovery community
- **Ensure** the availability and delivery of publicly available, free of charge, behavioral health training and technical assistance to health care and prevention professionals



PTTC Mission

To Strengthen **the Capacity of the Workforce to Deliver Evidence-Based Prevention Strategies and Facilitate Opportunities for Preventionists to Pursue New Collaboration Opportunities, which include Developing Prevention Partnerships and Alliances**



Central East PTTC Specialty Area

Engaging and Collaborating with Primary Care Providers for Substance Use Prevention



Eligibility

Behavioral health and health care providers, consumers, families, state and local public health systems and other stakeholders

Consistent with
Regional, State
and Local
Needs

No cost

Data Driven

EBPs provided
by Subject
Matter Experts



PTTC Focus Areas

- Opioid/harm reduction strategies
- Suicide prevention and substance use overdoses
- Youth vaping/tobacco
- Youth alcohol and suicide
- Health equity and the elimination of disparities
- Trauma
- Workforce leadership development series-
strategic planning/SPF; data-informed decision-
making; environmental strategies



Upcoming Webinars

- Motivational Interviewing: African American Males- **May 27**
- Shifting the Attitudes of Law Enforcement in Addressing the Opioid Epidemic- **June 3**
- Preventing Youth Vaping Parts 1 & 2- **June 25, August 6**
- Building Capacity for a Public Health Approach to Prevention- **July 16**
- Identifying Emerging Drug Trends- **September 24**



Other Resources in Region 3



Central East (HHS Region 3)

ATTC

Addiction Technology Transfer Center Network
Funded by Substance Abuse and Mental Health Services Administration



Central East (HHS Region 3)

MHTTC

Mental Health Technology Transfer Center Network
Funded by Substance Abuse and Mental Health Services Administration



Central East (HHS Region 3)

PTTC



Central East (HHS Region 3)

PTTC

Prevention Technology Transfer Center Network

Funded by Substance Abuse and Mental Health Services Administration

A Prevention Approach to Working with the Social Determinants of Health

May 20, 2020

Dawn M. Thomas

Prevention Systems Manager



Presenter: Dr. Dawn Thomas



- Prevention Systems Manager with the Ohio Department of Mental Health & Addiction Services (OhioMHAS)
- More than 25 years of public service focused on prevention, training, mental health and other social services programming
- Experienced in event planning; program development, coordination, and implementation; fostering and promoting close working relationships between state, county, and local social service systems/agencies.
- Previously served as the Project Director for Ohio's Strategic Prevention Framework Partnerships for Success (SPF-PFS) State and Tribal Initiative Grant.
- Passionate about working with underserved communities that experience health disparities and learning best practices, policies, and strategies for providing culturally appropriate services to achieve health equity.



Learning Objectives

- Review the Social Determinants of Health (SDOH) and discuss how SDOH impact overall community health, wellness and prevention efforts.
- Understand the rationale and importance of addressing the Social Determinants of Health from a prevention perspective.
- Discuss the need for cross-sector collaboration.
- Describe/discuss a broad range of culturally appropriate engagement strategies for new and/or existing partners.



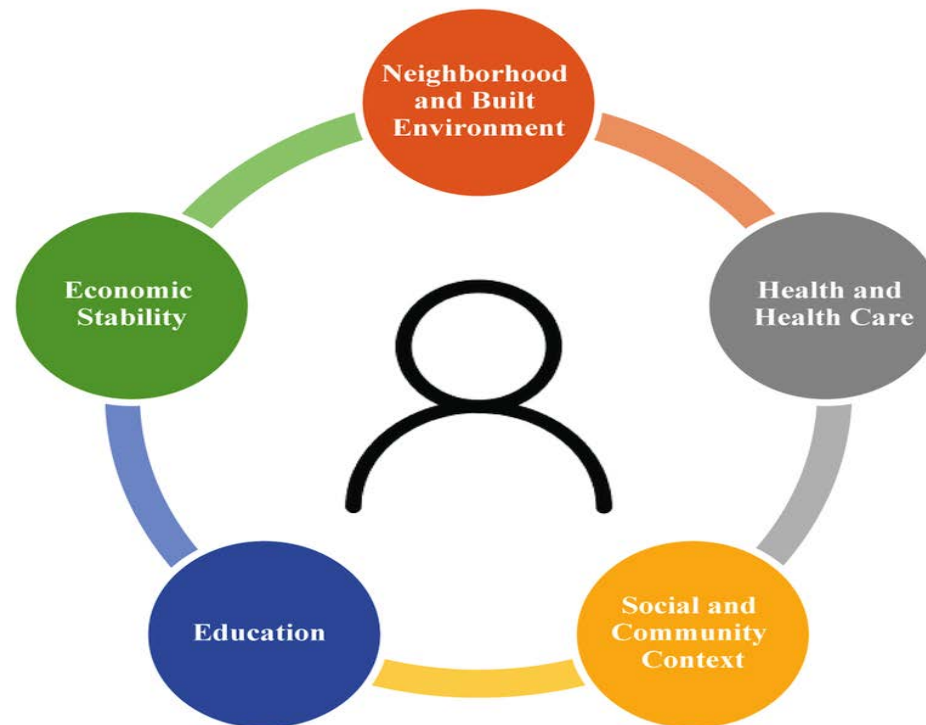
Social Determinants of Health

Places where we are born, live, learn, work, play and age



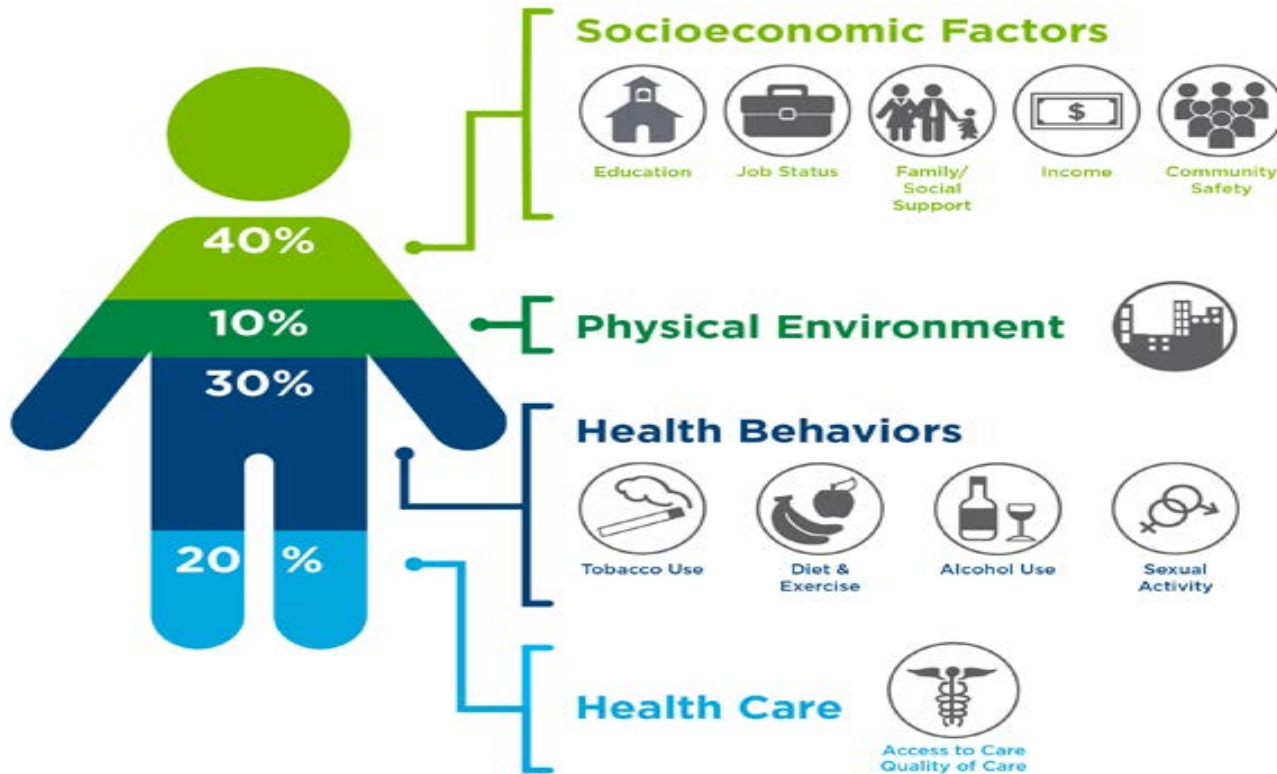
Social Determinants of Health

Broad range of personal, social, economic and environmental factors that contribute to individual and population health



Social Determinants of Health

What Goes Into Your Health?

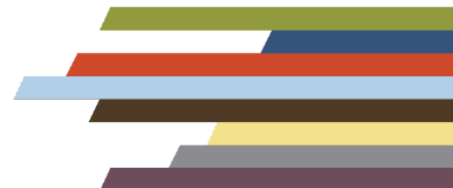


Institute for Clinical Systems Improvement Going Beyond Clinical Walls, Solving Complex Problems – October 2014



SAMHSA Prevention

- Reduce the impact of substance use and mental disorders in America's communities
- Educate and support individuals and communities to prevent the use and misuse of drugs and the development of substance use disorders



Promoting Mental Health and Preventing Substance Abuse



- Promote mental, emotional and behavioral (MEB) well-being in communities
- Prevent Substance Abuse and other Mental Emotional Behavioral Disorders
- Strengthen Infrastructure across Systems



WHAT DO YOU THINK?

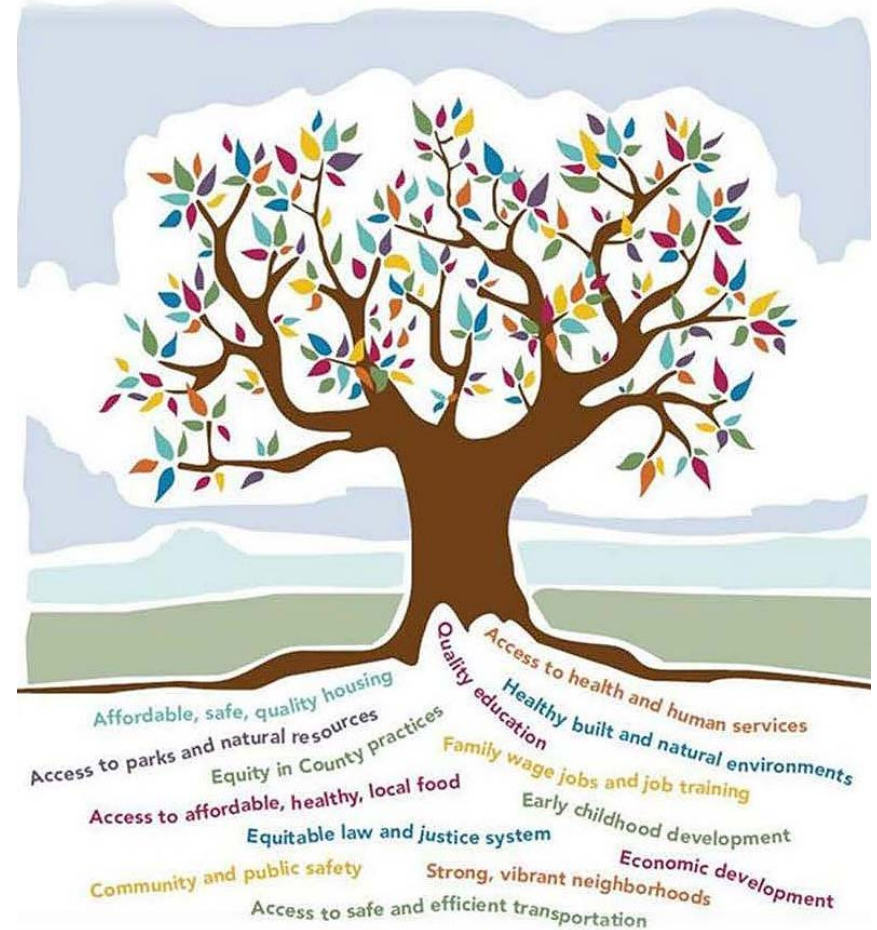
Do you believe the Social Determinants of Health impact your work as a Prevention Professional?

- Yes quite a bit
- Somewhat
 - Rarely
 - Never



Social Determinants of Health

- Conditions determine a person's chances of maintaining good health
- **Causes of the causes” or “Root Causes”**
- How social and economic structures shape the health of populations



Social Determinants of Health

- **CAPITALISM**



- **RACISM**



- **STRUCTURAL SYSTEMS OF INEQUITY**



Racism and Health

Dr. Camara Phyllis Jones

Past President of APHA

MD, MPH, Ph.D.



Racism structures opportunity and assigns value based on how a person looks

<https://www.youtube.com/watch?v=CtAL9UFHMQY>

RACISM: IGNORE IT...
AND IT WON'T GO AWAY.



Taking a Closer Look...

- Being in a disadvantaged group is associated with having a lower level of educational attainment
- Having a lower level of educational attainment is associated with worse health status
- Lower a person's social status the worse the average health status of its members



What's the Value?

- Data drives decisions...
- True understanding demands a broader understanding of underlying factors
- ***Health in all policies*** is a comprehensive approach where diverse government agencies work toward common goals to achieve improved health for all

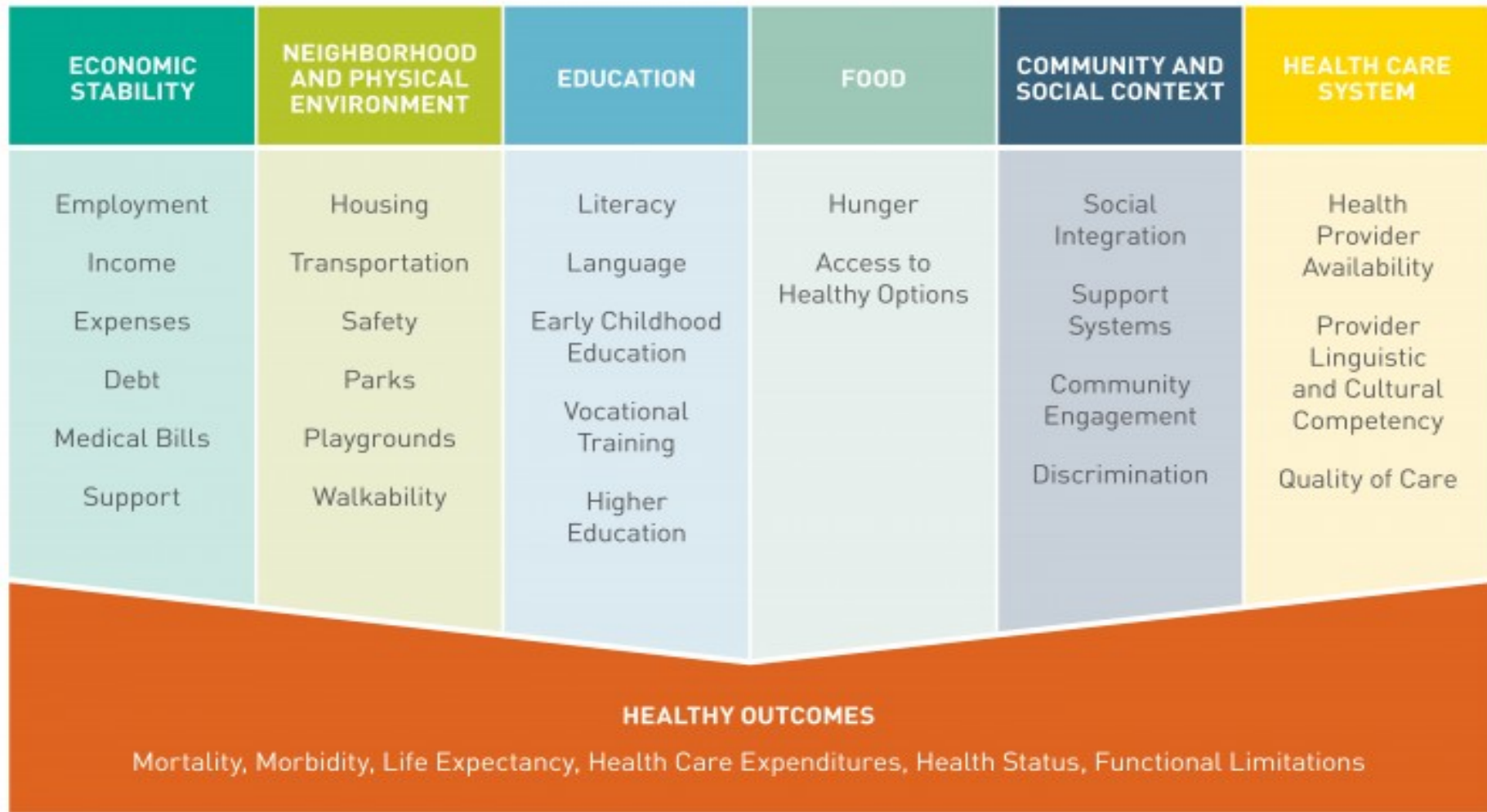


What's the Value?

- Improve individual and population level health
- Advance health equity as part of a larger national commitment to optimal health
- Everyone deserves an **equal opportunity** to make the choices that lead to good health



Social Determinants of Health



Where Do WE Begin?

- View an individual as more than just a system of organs/physical body
- Health is more a function of lifestyles linked to living and working conditions than of HEALTHCARE alone



Health vs. Healthcare

Improving

- Access

Improving

- Coverage

Improving

- Quality

Improving

- Intensity



QUESTION...

**How can you improve:
Access, Coverage, Quality, Intensity of
Prevention Services?**



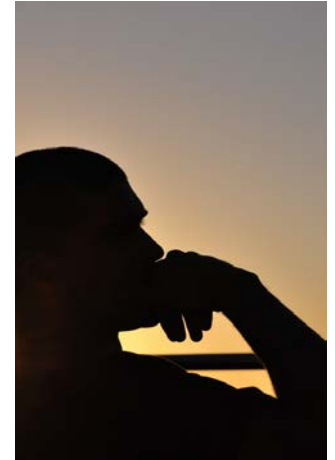
What Can WE Do?

- Acknowledging long lasting effects of our history
- Actively look for ways institutions/systems perpetuate bias and historical trauma
 - APHA National Campaign Against Racism
 - YWCA Columbus
 - National Collaborative for Health Equity
 - National Network to Eliminate Disparities in Behavioral Health (NNED)
- Dismantling systems of structural inequity that are preventing communities from reaching their full potential



What Can WE Do?

- Listen more to the people we serve
 - ✓ Let go of the agenda
 - ✓ Acknowledging their experiences/stories
- Be honest about our lack of institutional knowledge of how to **EFFECTIVELY** partner with communities of color
 - ✓ Role of government in perpetuating inequities among people
 - ✓ Examining how our OWN agencies/systems perpetuate inequality

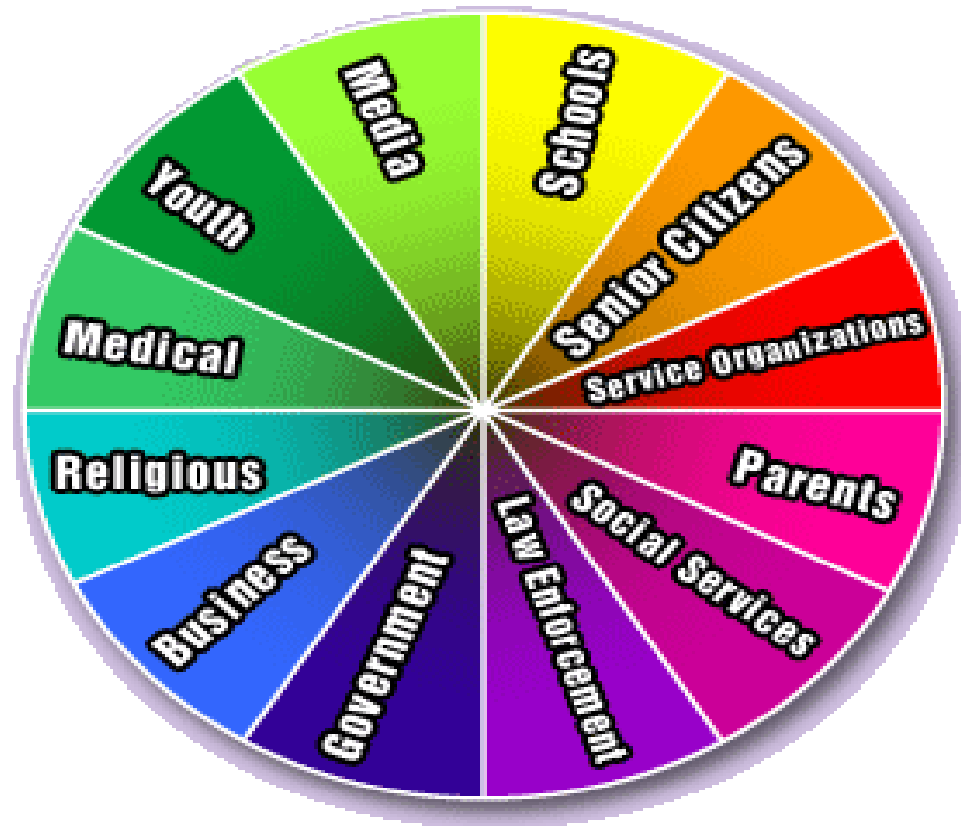


What can WE Do?

- Monitoring for inequities in exposure and opportunities as well as for disparities in outcomes
- Examination of structures, policies, practices, norms and values
- Intervention on societal structures and attention to systems of power



Partnership and Collaboration



WHAT DO YOU THINK?

What is one suggestion you would give to another Prevention Professional when it comes to initiating relationships within other sectors?



Prevention in Health Equity

- More research is needed to identify how to build public support and political will for interventions that have been identified as effective
 - ✓ Research to Practice (community involvement CBPR)
 - ✓ Partnership with public health and other fields



Prevention in Health Equity

- Addressing social determinants of health is a **primary approach** to achieving health equity
- Focus on the most commonly occurring problems (**data driven**)
- Focus on those **EARLY** in life who would have a longer time to reap benefits
- (Early Childhood Initiatives)



Prevention and Health Equity Approaches

- Develop Authentic Relationships
- Requires Real Transformation
- Critical Aspect of Interventions is TRUST



We Build
relationships



Recipe for Health Equity

- **R** – Research
- **E** – Education
- **C** – Collaboration
- **I** – Initiative & Implementation
- **P** – Public Policy
- **E** – Empathy to Empower

<https://www.youtube.com/watch?v=ywQJGnzQKGs>

Dr. Renaisa Anthony

MD., MPH

Deputy Director/Physician/Professor

University of Nebraska Medical Center



ACTION STEPS

What are 2 things you could do to begin addressing the Social Determinants of Health into your Prevention work?



Health Equity

=

Everyone has a fair
opportunity to live a
long and healthy life.



Evaluation

Your feedback is important!

Evaluation Form

To complete the evaluation form, go to <https://ttc-gpra.org/P?s=820222> or scan the QR code.



Evaluation Form
QR Code

Resource Page

Upon completion of the evaluation form, your browser will redirect to the resources from today's webinar, which will include a PDF of the PowerPoint slides.

Certificate of Attendance / Contact Hour

For viewing the live webinar today, you can receive up to one (1) NADAAC contact hour of attendance. You may request a certificate from a link provided at the TOP of the RESOURCES PAGE. Certificates must be requested within 1 week of the webinar. Certificates will be processed within 30 days.

Recording

A recording of today's webinar will be available online at <http://bit.ly/ce-pttc> in 2-3 weeks.



Contact Us



Central East (HHS Region 3)

PTTC

Prevention Technology Transfer Center Network
Funded by Substance Abuse and Mental Health Services Administration

a program managed by



Central East PTTC website:
www.pttcnetwork.org/centraleast

Danya Institute website:
www.danyainstitute.org

Deborah Nixon-Hughes, Director:
dhughes@danyainstitute.org

Danya Institute email and phone:
info@danyainstitute.org
(240) 645-1145

Funding for this presentation was made possible by SAMHSA grant no. 1H79SP081018. The views expressed by speakers and moderators do not necessarily reflect the official policies of HHS; nor does mention of trade names, commercial practices, or organizations imply endorsement by the U.S. Government.



Central East (HHS Region 3)

PTTC

