

# Lobby Poll

What do you see as your community's greatest strengths?



The logo for the Education Development Center (EDC), consisting of the letters "EDC" in a bold, white, sans-serif font on a dark blue square background.

Education  
Development  
Center

February 26, 2019

# Conducting Community Needs Assessments to Guide Prevention Efforts

## Part 2

Shai Fuxman, Training and Technical Assistance (T/TA) Specialist, EDC

Jessica Goldberg, T/TA Specialist, EDC

Cory Morton, Assistant Professor, Department of Social Work, University of New Hampshire



Northeast & Caribbean (HHS Region 2)

**PTTC**

Prevention Technology Transfer Center Network  
Funded by Substance Abuse and Mental Health Services Administration

# Technical Information

This webinar is being recorded and archived. Following the webinar, the archived recording will be available to all webinar participants.

Please contact the webinar facilitator if you have any concerns or questions.

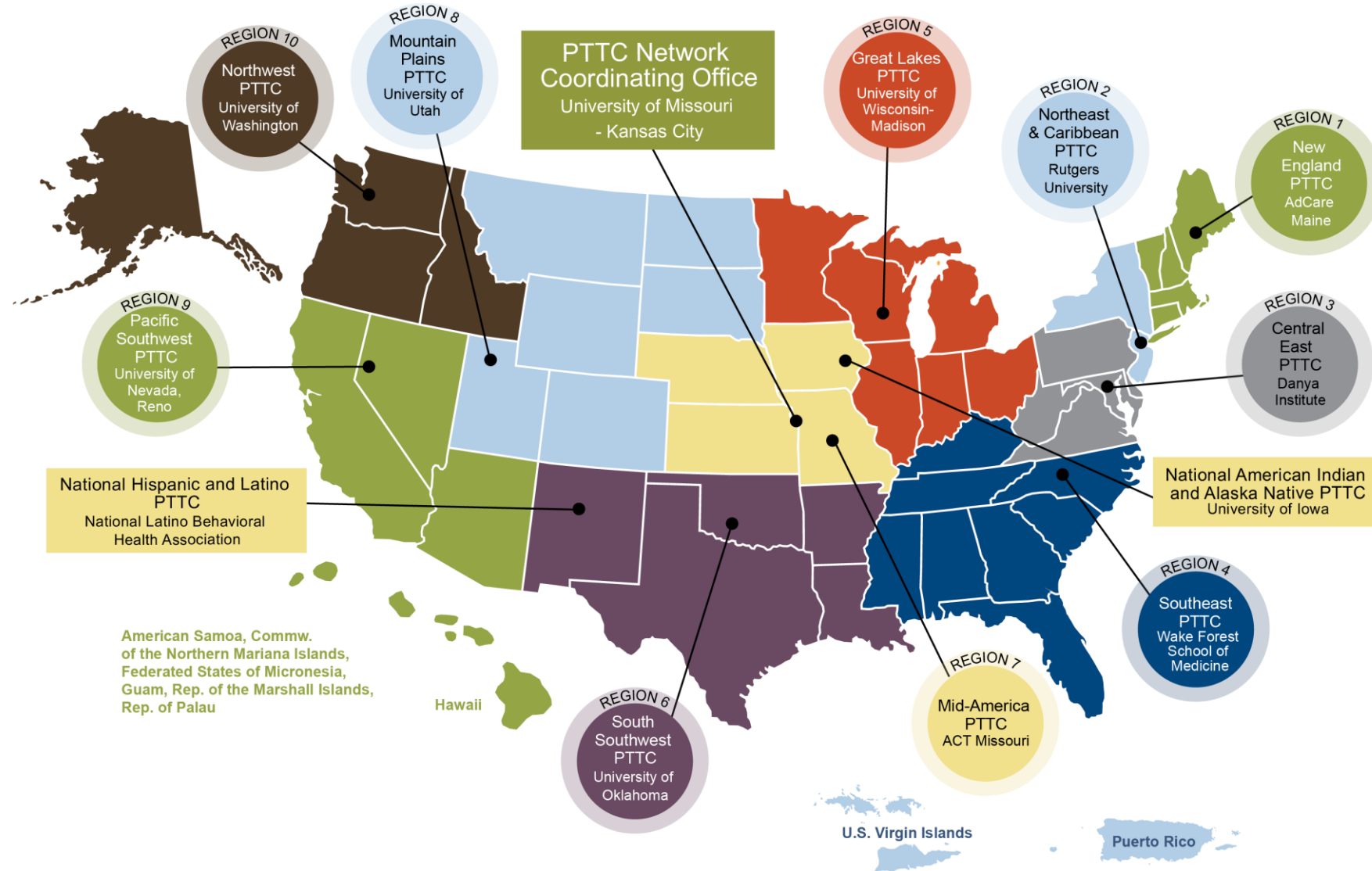
For training use only.



**PTTC**

Prevention Technology Transfer Center Network  
Funded by Substance Abuse and Mental Health Services Administration

**PTTC Network**



# Presenters



**Shai Fuxman**

T/TA Specialist  
Region 2 PTTC



**Cory Morton**

Assistant Professor  
University of New Hampshire



**Jessica Goldberg**

T/TA Specialist  
Region 2 PTTC

# Learning Objectives

- Explore the importance of assessing community capacity as part of a comprehensive needs assessment process
- Describe how community capacity (i.e., available resources and level of readiness) affects the types of prevention strategies it should select
- Discuss various approaches to sharing data with key stakeholders, including mapping geographic data

# **Needs Assessment Part 1: A Review**

# Public Health Questions

**What?**

**Who?**

**When?**

**Where?**

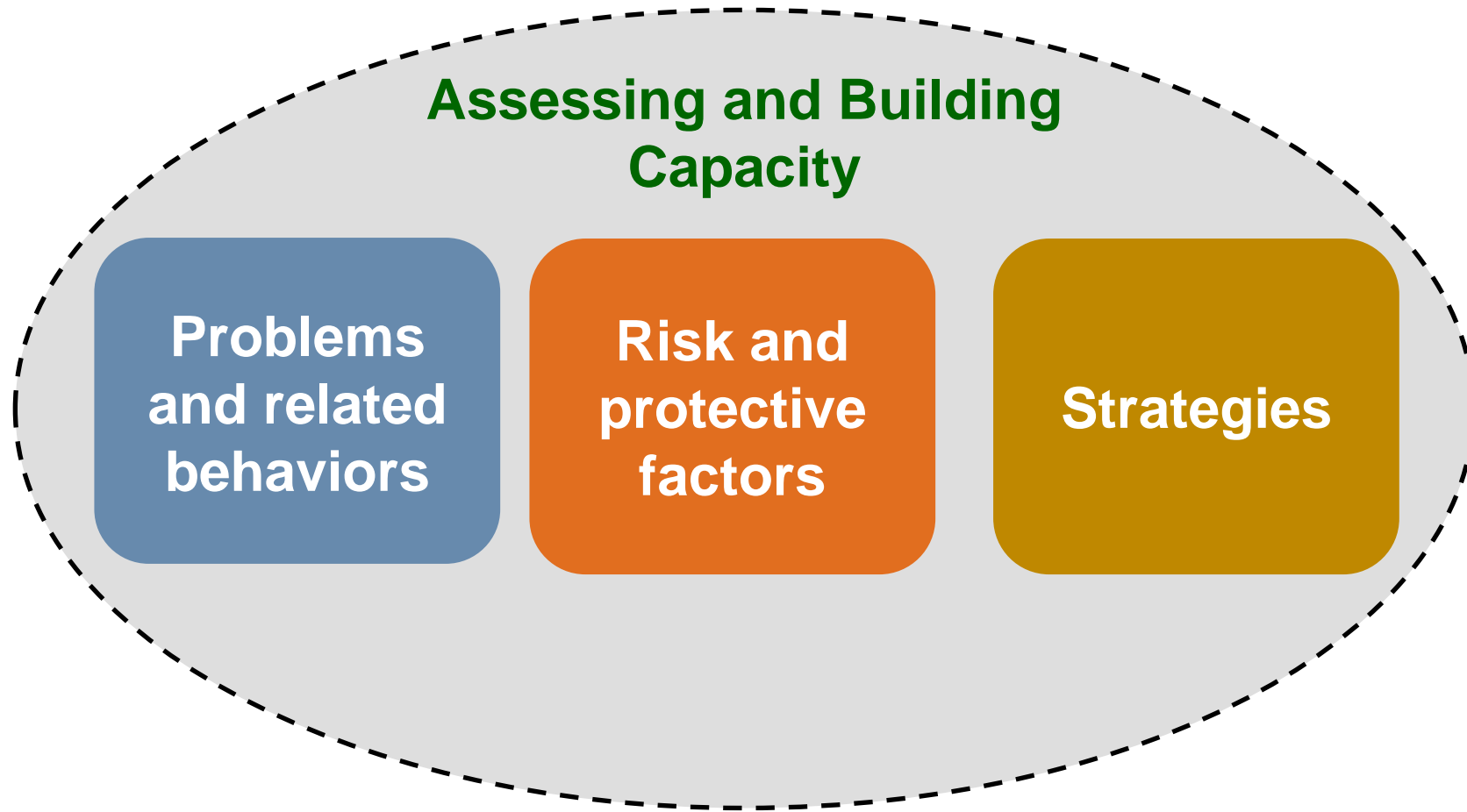
**Why?**

**How?**





# Guiding the Assessment Process



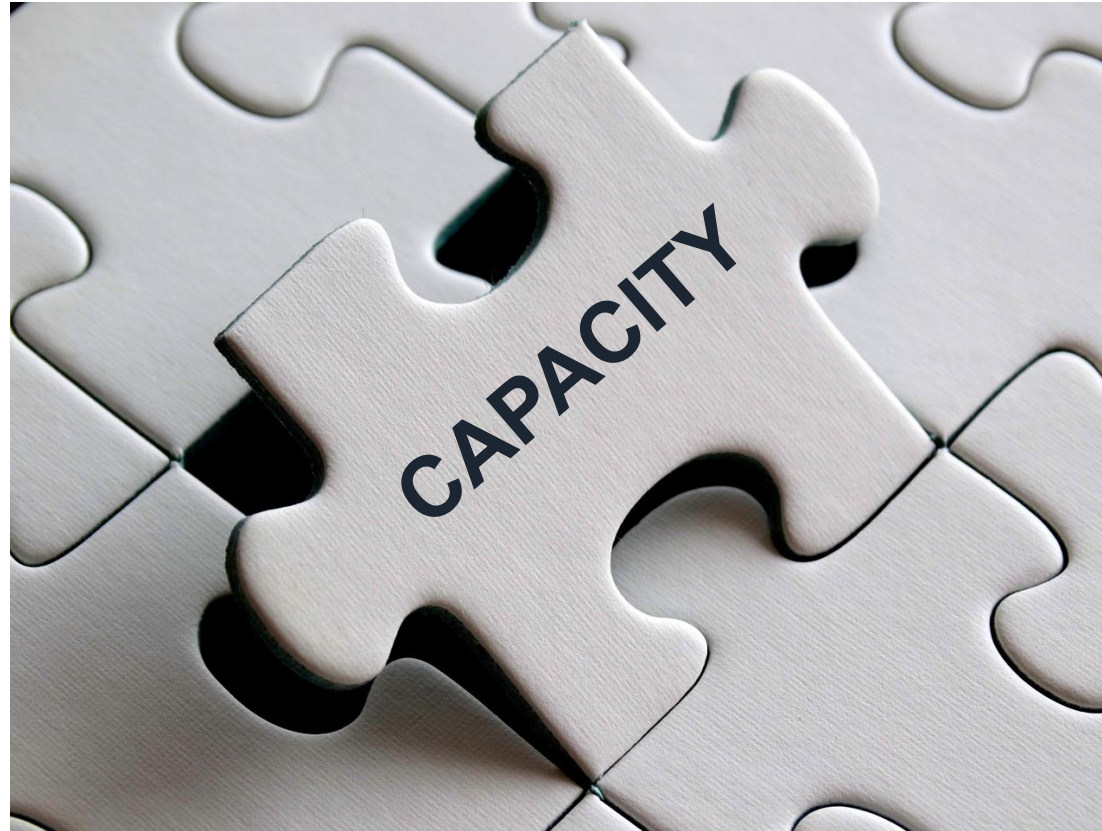
# Understanding Community Capacity

# Poll

When you hear the word *capacity*, what comes to mind?



# What Is Capacity?



# Elements of Building Capacity

## Raising Awareness



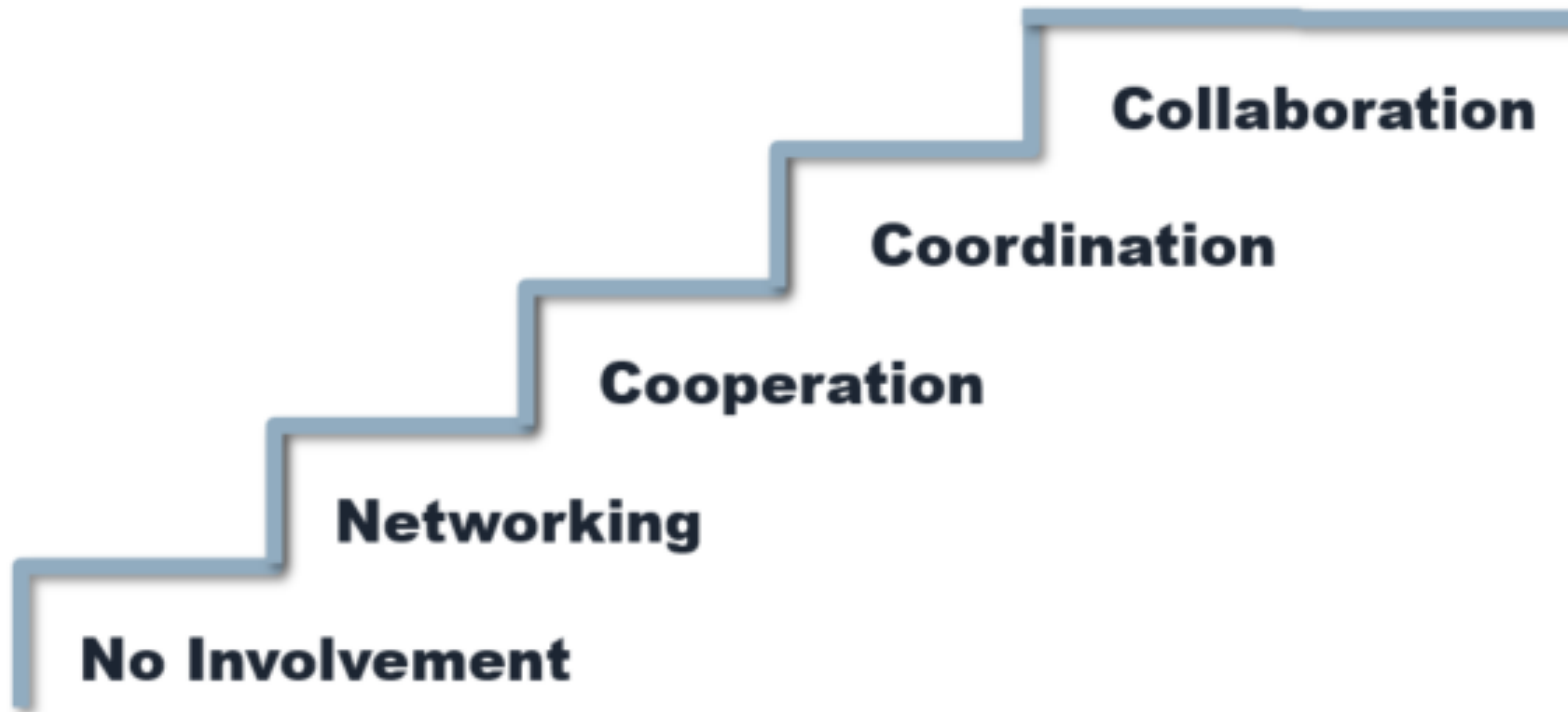
## Engaging Stakeholders



## Strengthening Partnerships



# Levels of Involvement



# The Role of Capacity Assessment in Assessing Need



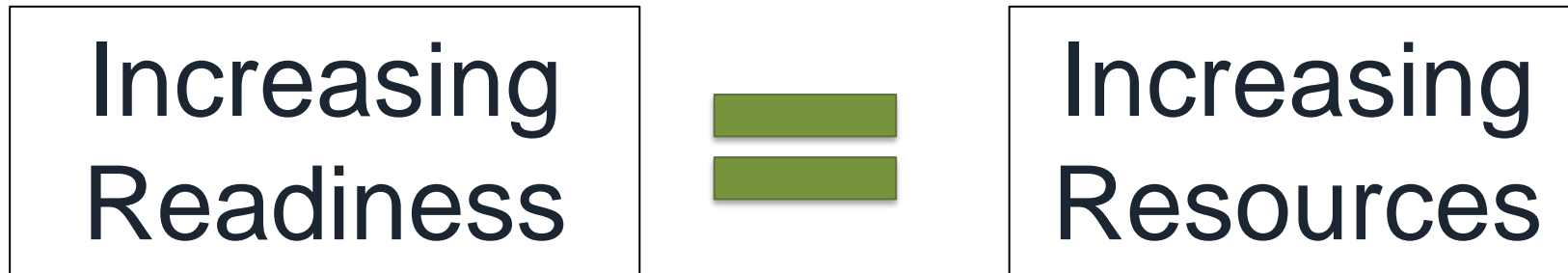
# Conducting Capacity Assessment



# Assessing Capacity



# Assessing Capacity



# A Closer Look at Resources

*What type of resources are available in your community?*

- Human
- Fiscal
- Organizational
- Technological



# Talking about Resources

I have experience in website design and using social media.

I am Latino and know my community well.

We have money to give.

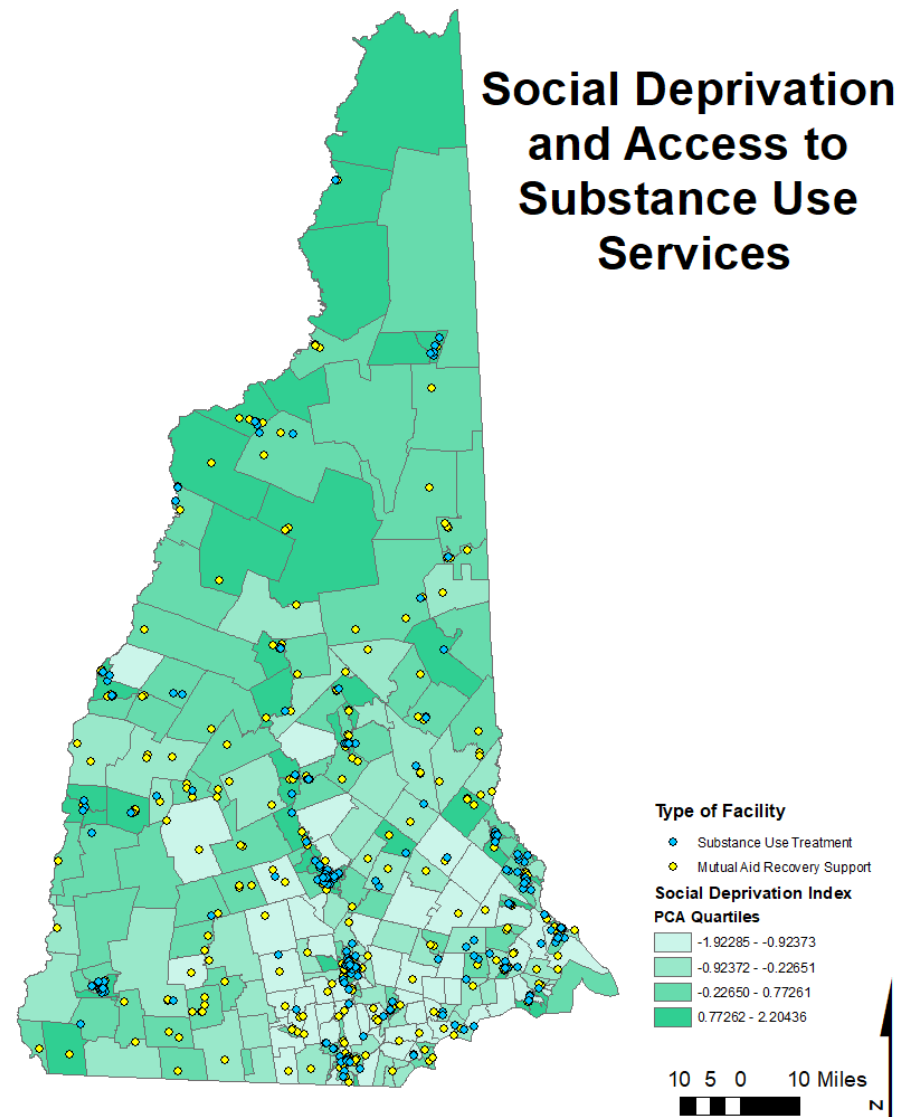
I have a good sense of where people can get services they need.

Our organization's mission is about health and well-being.

We have expertise in evaluation.

I've been working in prevention for over 20 years and sit on the Board of Health in my community.

# Example: Mapping Resources



# Poll

On a scale of 1 – 5 (1 being not at all and 5 being very), how ready is your community to address its priority substance misuse problems?



# The Community Readiness Model

- Nine-stage, multi-dimensional
- Promotes community-based change
- Builds cooperation among systems and individuals
- Roadmap for the community development journey



# The Community Readiness Model

## CAN:

- Measure a community's readiness
- Identify weaknesses, strengths, and obstacles
- Point to culturally appropriate actions
- Aid in securing funding and working with leadership

## CANNOT:

- Make people do what they do not believe in
- Tell you exactly what you should do to accomplish your objectives
- Measure what is actually occurring



# Stages of Community Readiness

Stage 1 – Community Tolerance/No Knowledge

Stage 2 – Denial

Stage 3 – Vague Awareness

Stage 4 – Pre-planning

Stage 5 – Preparation

Stage 6 – Initiation

Stage 7 – Institutionalization/Stabilization

Stage 8 – Confirmation/Expansion

Stage 9 – Professionalism/High Level of Community Ownership

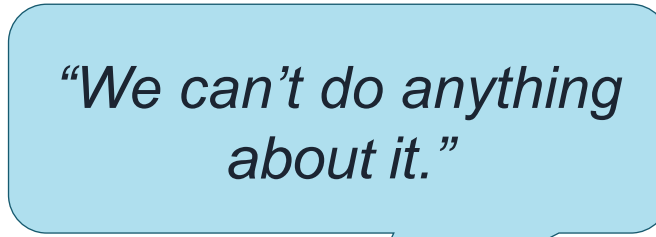


# Stages 1-3



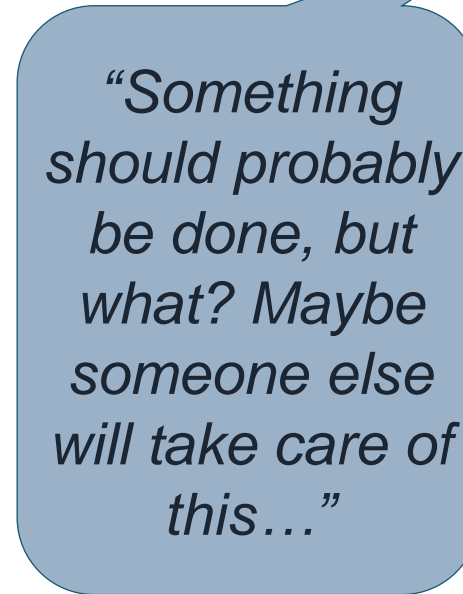
*“Prescription Opioids misuse is not really a problem here.”*

**Stage 1:**  
**Tolerance / No Knowledge**



*“We can't do anything about it.”*

**Stage 2:**  
**Denial**



*“Something should probably be done, but what? Maybe someone else will take care of this...”*



**Stage 3:**  
**Vague Awareness**

# Stages 4-6

*“This is important,  
what can we do?”*



**Stage 4:**  
Pre-planning

*“I will meet with our  
funders tomorrow.”*



**Stage 5:**  
Preparation

*“We are beginning  
to do something to  
address this issue.”*



**Stage 6:**  
Initiation

# Stages 7-9

*"We have taken responsibility."*



**Stage 7:  
Institutionalization/  
Stabilization**

*How well are our programs working and how can we make them better?"*



**Stage 8:  
Confirmation/  
Expansion**

*"These efforts are part of the fabric of our community."*



**Stage 9:  
Professionalism/High  
Level of Community  
Ownership**

# Dimensions of Community Readiness



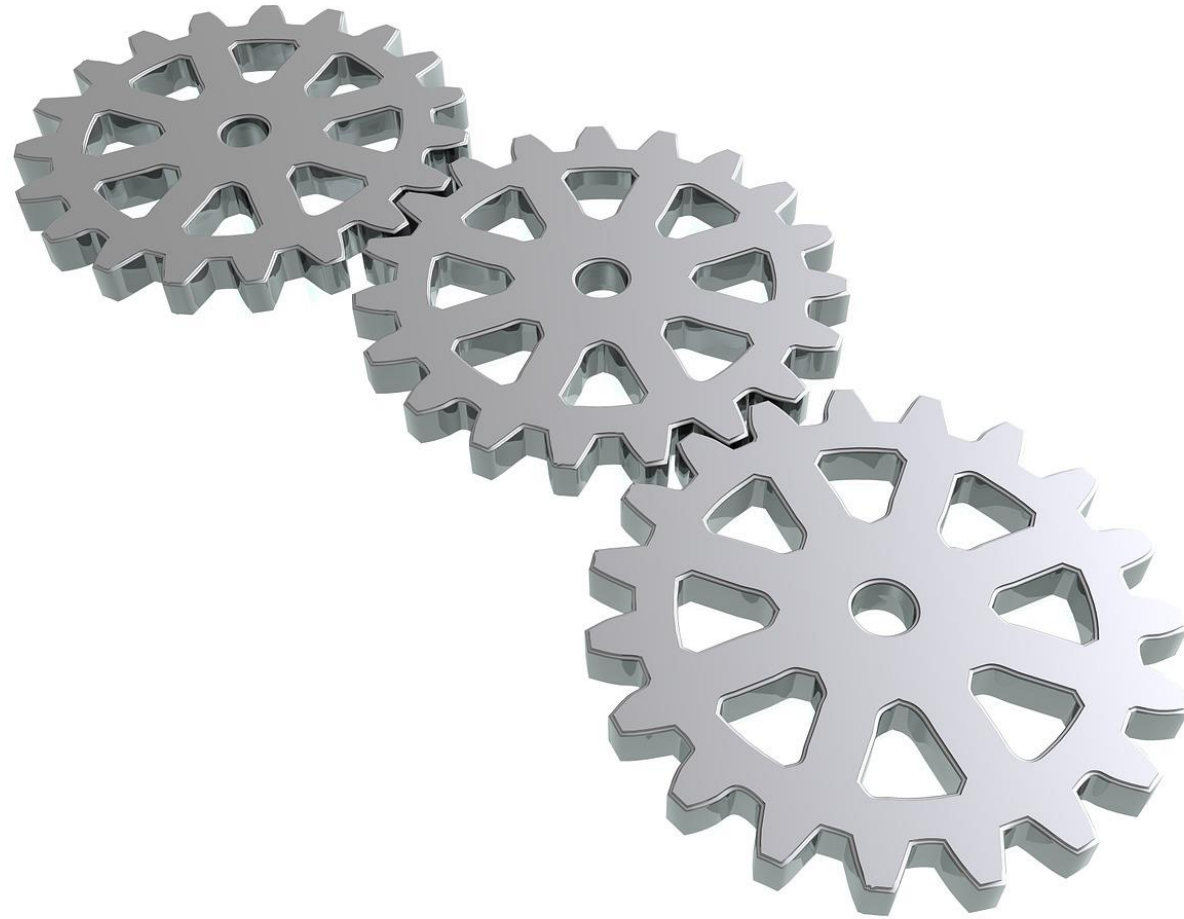
# Community Readiness Scores Example

Dimension	Readiness Level	Readiness Stage
Knowledge of Efforts	3	Vague Awareness
Leadership	2	Denial/Resistance
Community Climate	2	Denial/Resistance
Knowledge of the Issue	3	Vague Awareness
Resources	4	Pre-planning

# Strategies to Improve Readiness

Levels 1-3	Levels 4-6	Levels 7-9
<ul style="list-style-type: none"><li>• Conduct one-on-one interviews</li><li>• Attend meetings not directly related to your work</li><li>• Share the conversation with those outside your immediate circle</li></ul>	<ul style="list-style-type: none"><li>• Deliver community presentations</li><li>• Engage the public in the development of strategies</li><li>• Implement media campaigns</li></ul>	<ul style="list-style-type: none"><li>• Begin evaluation to modify efforts</li><li>• Celebrate success with community members</li><li>• Maintain local support and identify new funding sources</li></ul>

# Resources, Readiness, and Strategy Selection





# Sharing Assessment Findings

## In Your Experience...

How have you shared your assessment data with key community stakeholders in the past?



# Sharing Your Assessment Results

- Plan how to disseminate results
- Select formats for reporting results
- Brief stakeholders regularly
- Help stakeholders understand the data
- Show how your work will address the problems and related factors you've identified



# Sharing Your Assessment Results

“Youth using marijuana is not a big deal. We smoked weed when we were that age.”

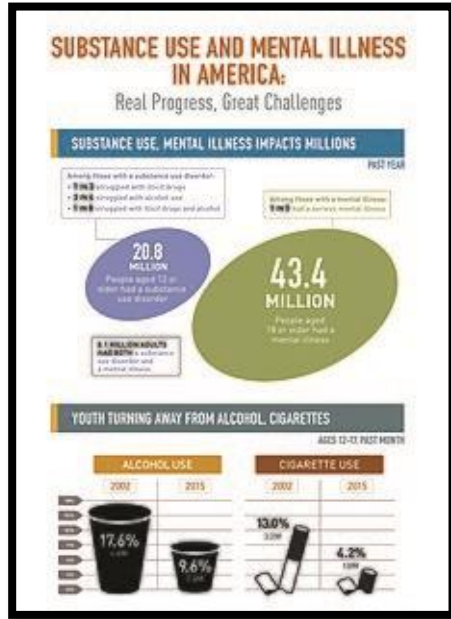
“My kids have parties in the basement sometimes. I always take their car keys so noone can get hurt.”

“If my son gets caught drinking it may affect his chances of getting into college. What can parents do to prevent this?”

“I grew up in this town and I just don't believe that many kids have tried alcohol already.”

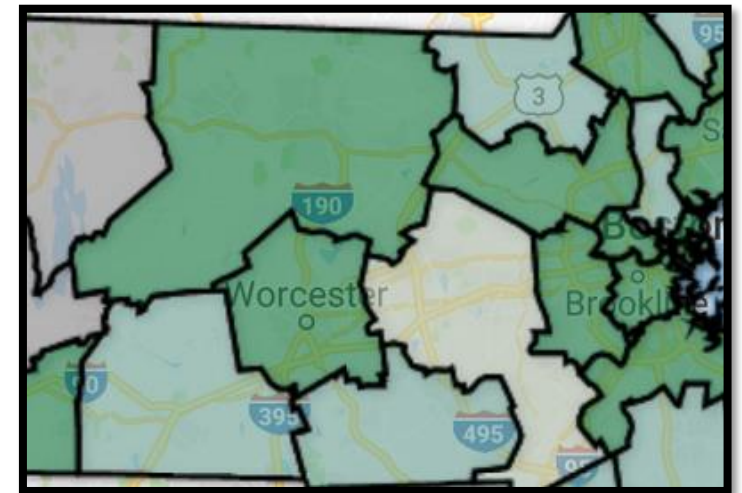
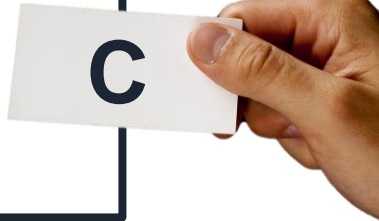


# Data Presentation Formats

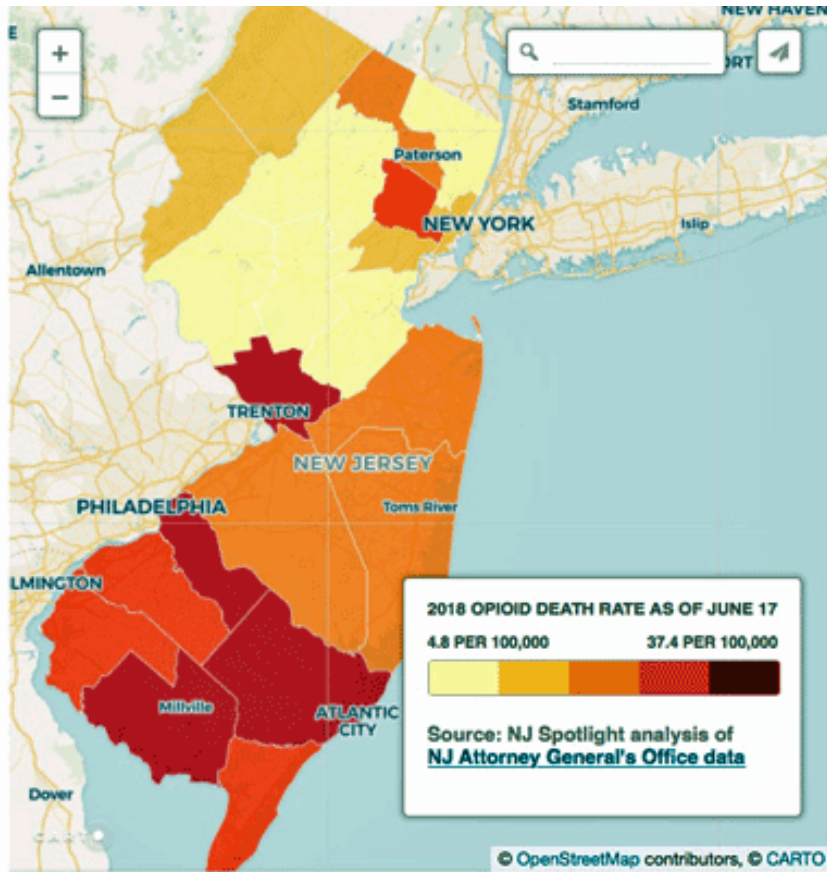


What percent of Rtown middle school students did NOT drink alcohol during the past 30 days?

- a) 46%
- b) 61%
- c) 79%
- d) 91%

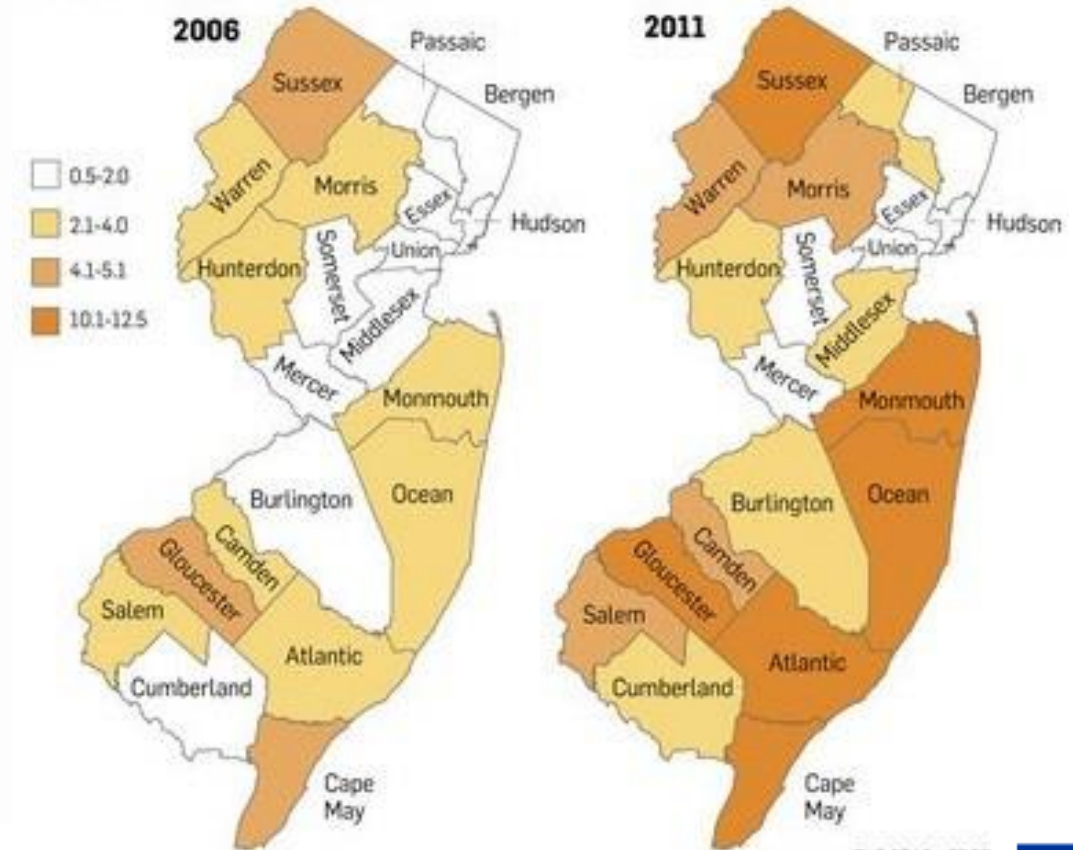


# Geospatial Data and Mapping Applications



## HEROIN TREATMENT RATES

For ages 25 and under per 1,000 people



THE STAR-LEDGE

# Questions?



# Resources

- Community Readiness Handbook
- Worksheet on increasing community readiness
- Technical assistance on locating, preparing, and mapping data
- Upcoming webinar on the integration of geospatial data into needs assessment and evaluation



# Next Steps

What other topics would you be interested in attending a virtual training on?



# Thank You!

If you have questions or comments, don't hesitate to contact:

**Jessica Goldberg, MSW,  
MPH, CPS**  
T/TA Specialist  
Region 2 PTTC, EDC  
[jgoldberg@edc.org](mailto:jgoldberg@edc.org)

**Cory Morton, PhD, MSW**  
Assistant Professor  
University of New Hampshire  
[cory.morton@unh.edu](mailto:cory.morton@unh.edu)

**Shai Fuxman, Ed.D**  
T/TA Specialist  
Region 2 PTTC, EDC  
[sfuxman@edc.org](mailto:sfuxman@edc.org)

# Evaluation



Please take a few minutes to complete a brief evaluation:

**[Insert link here](#)**

Your feedback is appreciated!

# References

- Tri-Ethnic Center for Prevention Research, Colorado State University. (2014). *Community Readiness for Community Handbook*. (2<sup>nd</sup> Edition). Ft. Collins, CO.
- Butterfoss, F.D. (2007). *Coalitions and partnerships in public health*. San Francisco, CA: John Wiley & Sons, Inc.
- Substance Abuse and Mental Health Services Administration. (2017). Conceptual fit: Sample risk factors and interventions for underage drinking. Retrieved from <https://www.samhsa.gov/capt/tools-learning-resources/sample-risk-factors-interventions-underage-drinking>
- Substance Abuse and Mental Health Services Administration. (n.d.) Prevention approaches [website]. Retrieved from <http://captus.samhsa.gov/prevention-practice/prevention-approaches>
- National Research Council and Institute of Medicine. (2009). Preventing mental, emotional, and behavioral disorders among young people: Progress and possibilities (O'Connell, M.E., Boat, T., & Warner, K.E., Eds.). Washington, DC: National Academies Press.