

Lobby

Please post in the chat:

If you attended Part 1 of this series, what did you find was interesting/useful?



Pacific Southwest (HHS Region 9)

PTTC

Prevention Technology Transfer Center Network

Funded by Substance Abuse and Mental Health Services Administration

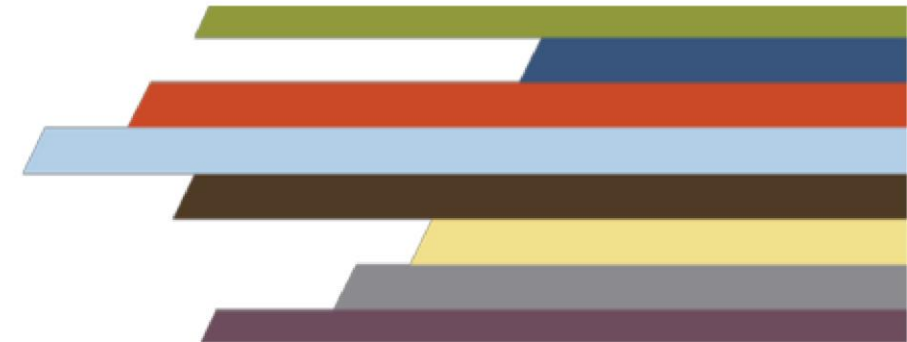


Implementation 101: Part 2

What is the SPF Implementation Step?

Kris Gabrielsen, M.P.H.

April 29, 2021



Disclaimer

The views expressed in this webinar do not necessarily represent the views, policies, and positions of the Substance Abuse and Mental Health Services Administration (SAMHSA) or the U.S. Department of Health and Human Services.

This webinar is being recorded and archived and will be available for viewing after the webinar. Please contact the webinar facilitator if you have any concerns or questions.

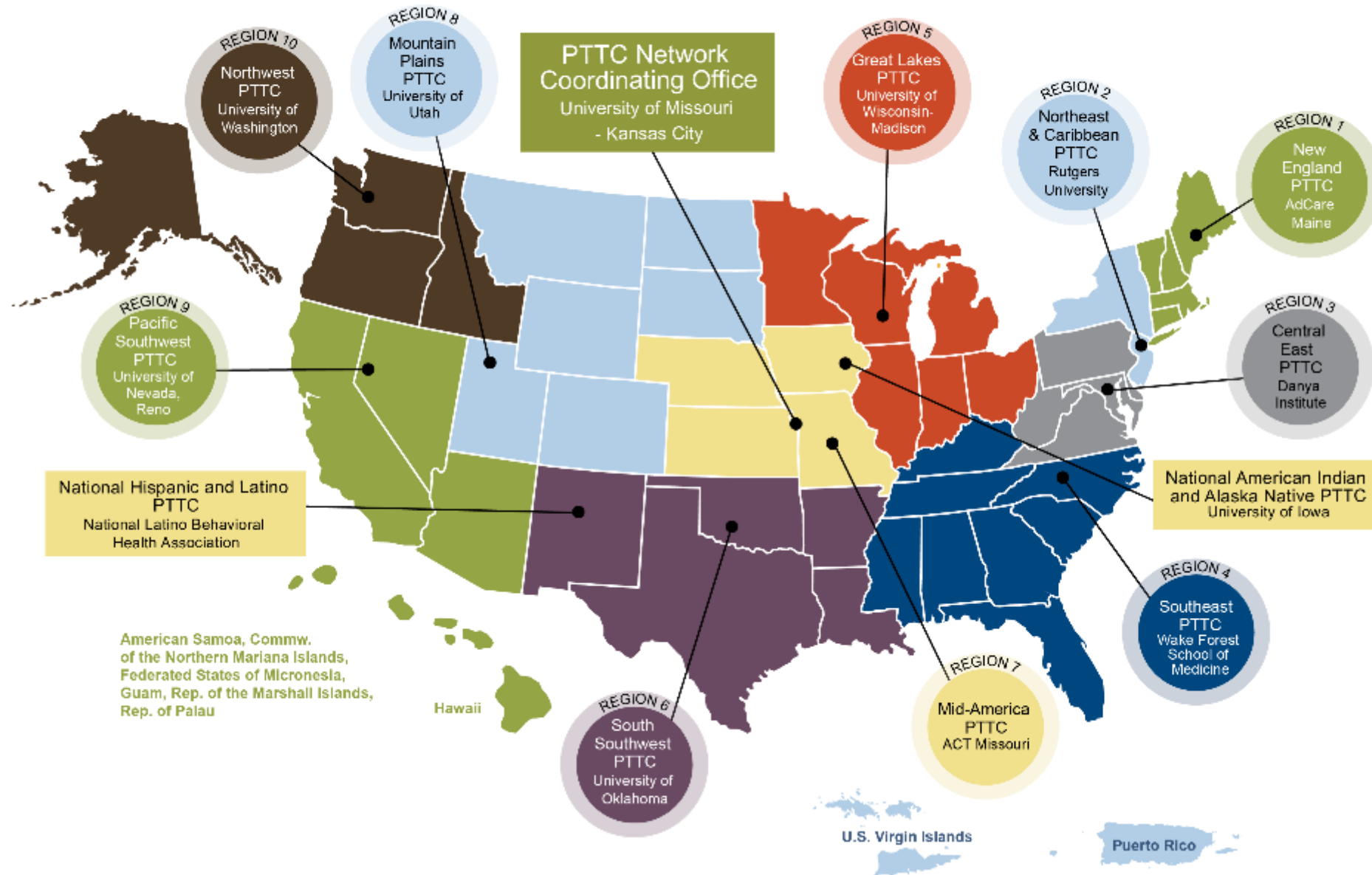
Developed under SAMHSA Cooperative Agreement
#H79SP081015-01.



PTTC

Prevention Technology Transfer Center Network
Funded by Substance Abuse and Mental Health Services Administration

PTTC Network



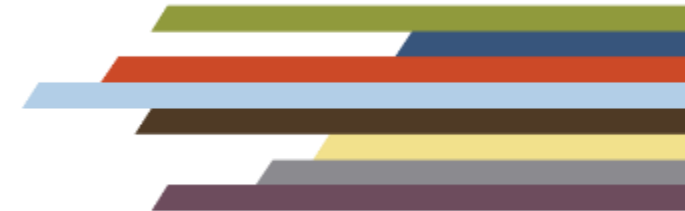
Purpose of the TTCs

1

Develop and strengthen the **workforces** that provide substance use disorder and mental health disorder prevention, treatment, and recovery support services.

2

Help people and organizations incorporate **effective practices** into substance use and mental health disorder prevention, treatment and recovery services.



PTTC Network Approach

The PTTCs...

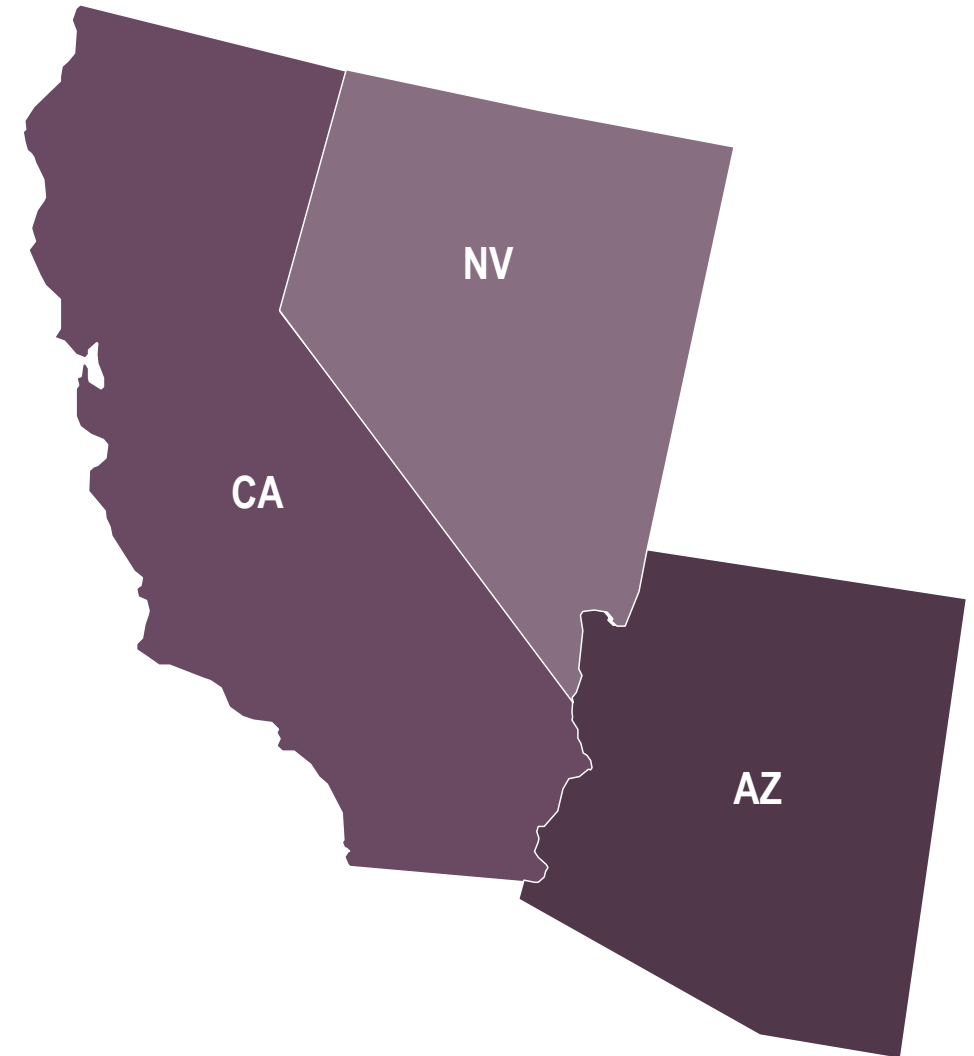
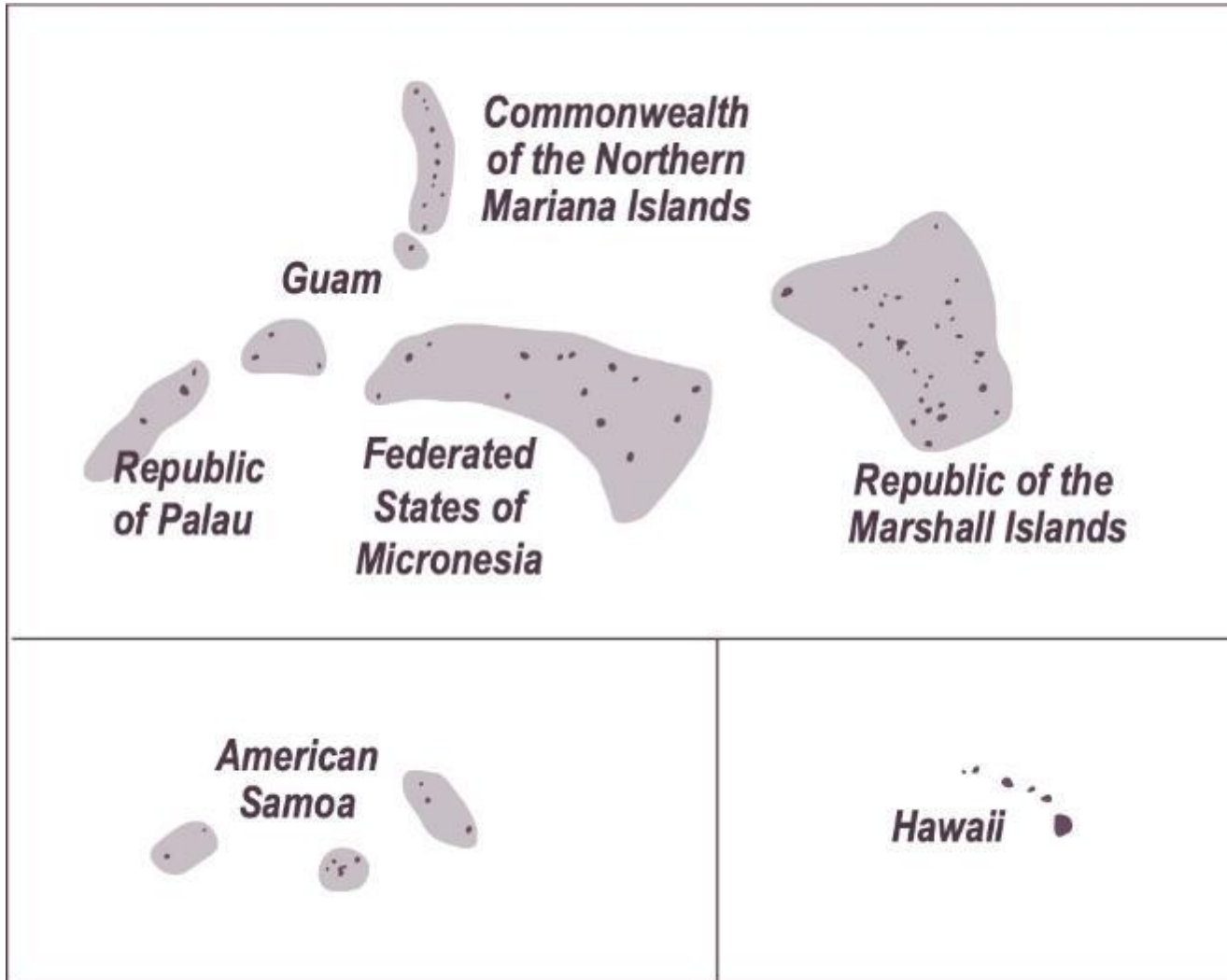
Develop and disseminate tools and strategies needed to improve the quality of substance abuse prevention efforts

Provide training and resources to prevention professionals to improve their understanding of

- prevention science,
- how to use epidemiological data to guide prevention planning, and
- selection and implementation of evidence-based and promising prevention practices.

Develop tools and resources to engage the next generation of prevention professionals

Pacific Southwest



Connect with us!

Find us on the web: www.pspttc.org

Join our mailing list: <http://eepurl.com/glssWD>

Email with general questions: pspttc-info@casat.org

Like us on Facebook: <https://tinyurl.com/PSPTTC-Facebook>

Follow us on Twitter: https://twitter.com/PS_PTTC

Call us toll-free: 1-833-9SW-PTTC

Mark Your Calendars!

Data Collection During COVID-19: Best Practices, Challenges, and Solutions

A Three-Part Live Webinar Series

Part 1: May 26 at 3:00 PT

Part 2: June 16 at 3:00 PT

Part 3: July 14 at 3:00 PT

Please visit pspttc.org for registration and more information!

Housekeeping

- Webinar recording and materials
- Certificates of attendance
- Several people at one computer?



Presenter and Special Guest



Kristen Gabrielsen, MPH, has worked in substance misuse prevention for nearly 30 years. She served as the Associate Director of the Western Center for the Application of Prevention Technologies (CAPT), co-authored the first Substance Abuse Prevention Specialist Training curriculum, and co-authored the textbook, *Substance Abuse Prevention: The Intersection of Science and Practice*. She currently works with states and communities across the nation to bridge the gap between research and practice by assisting prevention professionals in maximizing their effectiveness



Wa'Lynn Klein, Mt. Baker Community Coalition Coordinator has been a member of the Mount Baker community for nearly 20 years. She studies leadership at Trinity Western University and received her Certificate of Prevention Professional from the Prevention Specialist Certification Board of Washington and IC&RC in 2019. A mother of 4, she invests in healthy youth development through volunteer work in her off time. She has a love for prevention, and believes the frameworks, when trusted and followed create magic in community.

Poll

Did you attend Part 1 of this webinar on Tuesday?

- Yes
- No

What We Covered During Part 1



im·ple·men·ta·tion

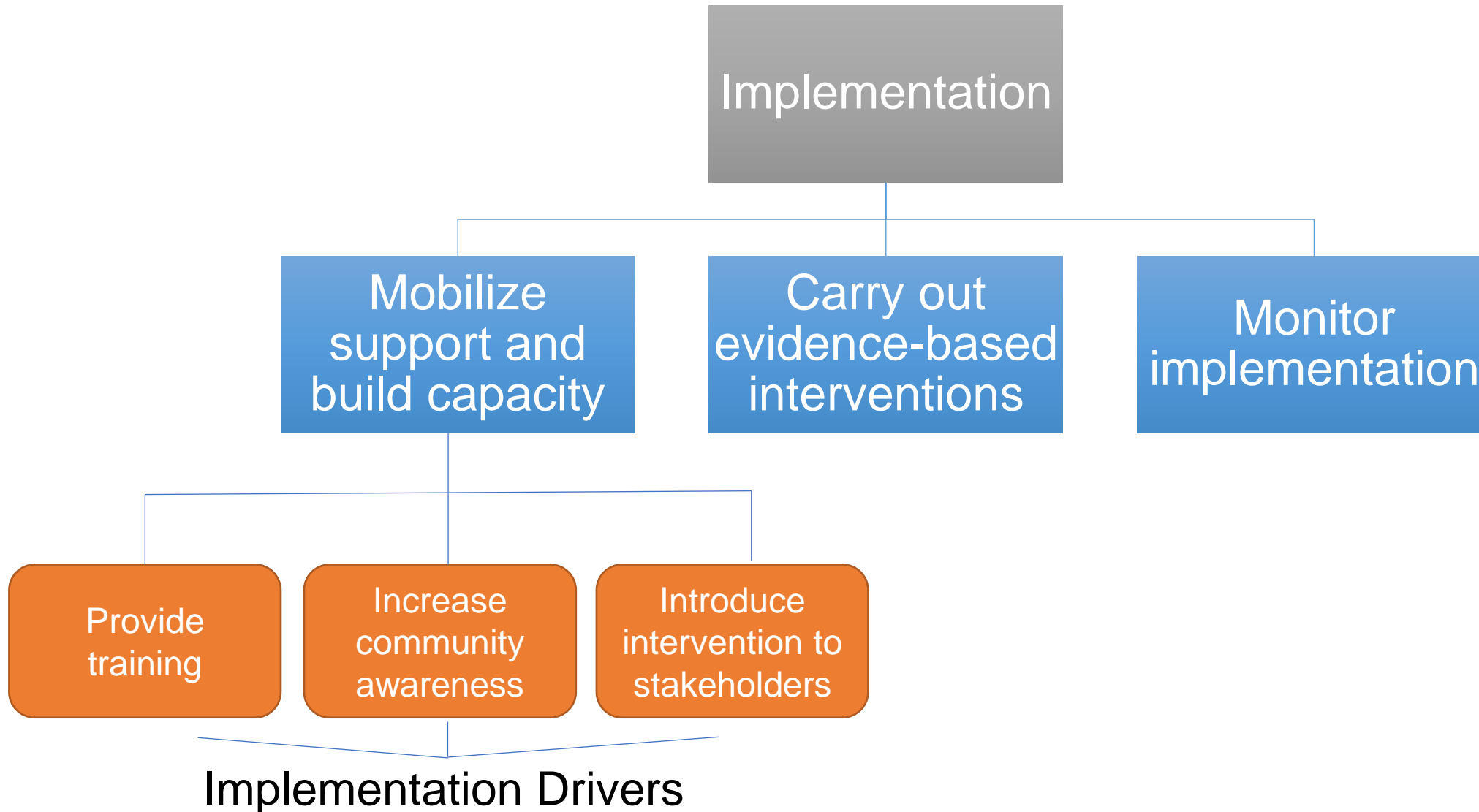
/,impləmənˈtāSH(ə)n/

noun

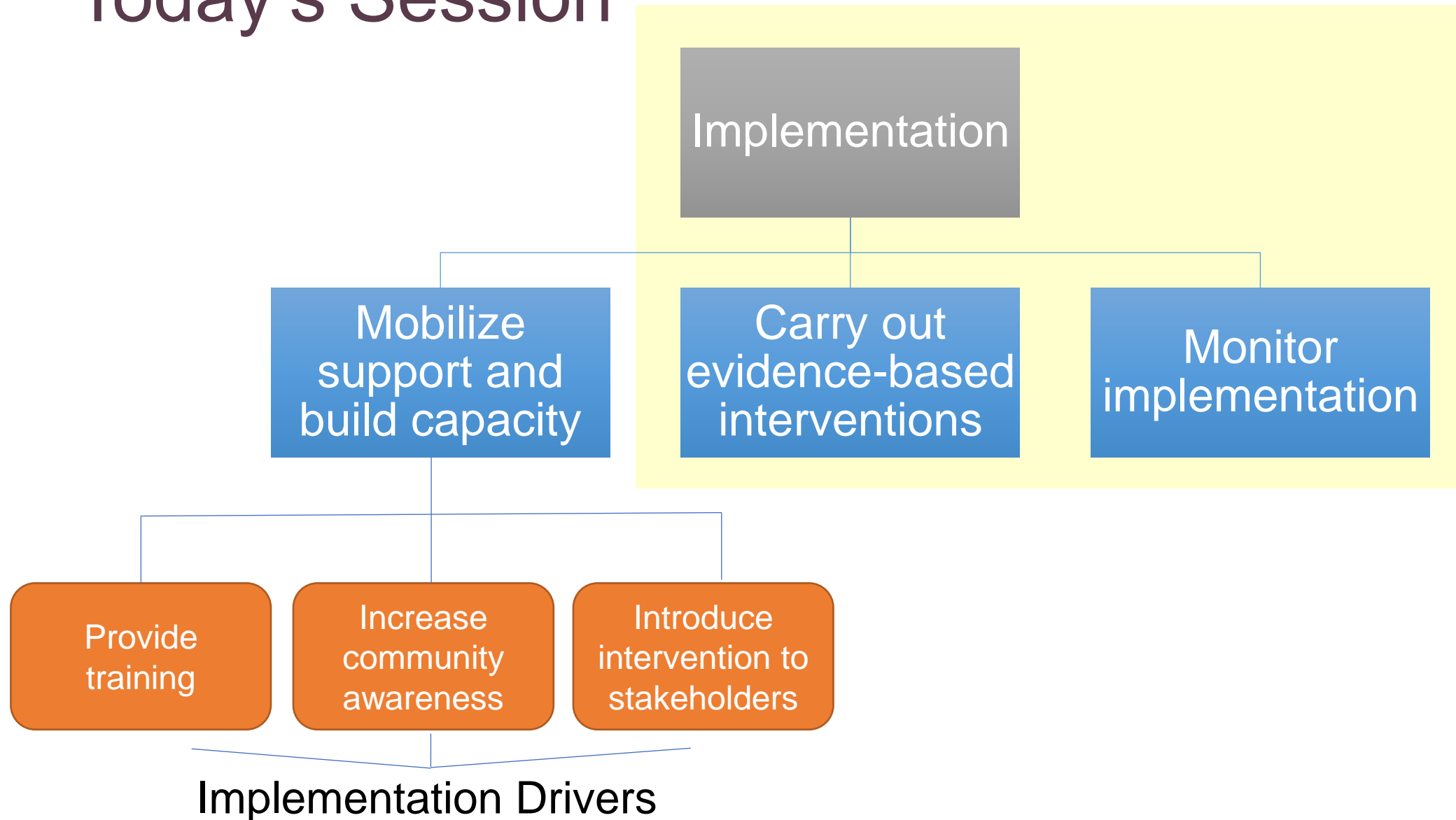
the process of putting a decision or plan into effect; execution.
"she was responsible for the implementation of the plan"



What We Covered, continued



Today's Session



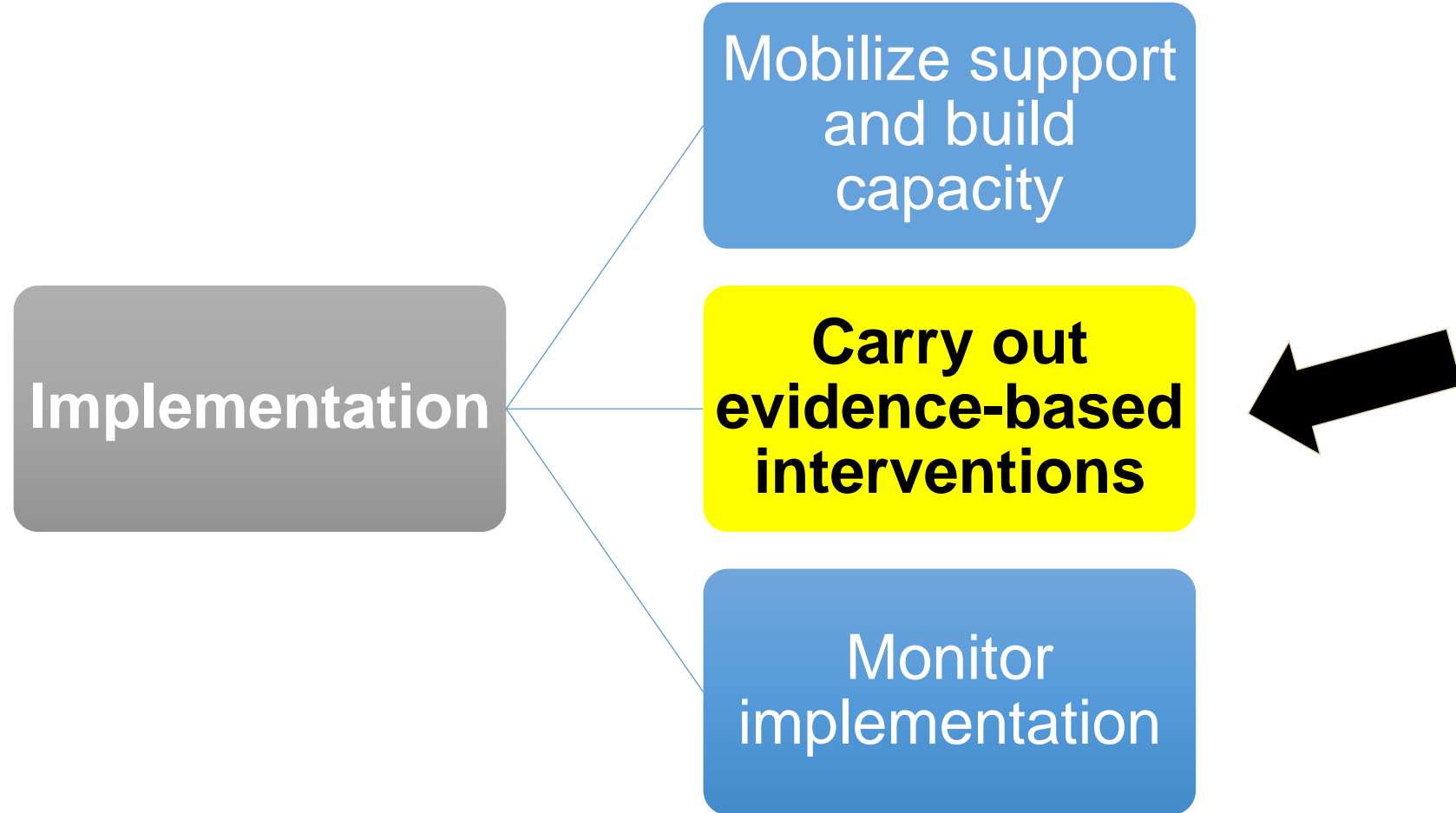
Polls: How Much Do You Remember?



Questions?



Implementation Task #2



Task #2 To-do List

- 2a. Balance fidelity with adaptation
- 2b. Develop and carry out an action plan



2a. Balance Fidelity with Adaptation



- Fidelity is the degree to which a program is implemented as its developer intended
- Sometimes adaptations are necessary, but this must be done *very carefully*

The Importance of Fidelity



Planned Cake




	Recipe _____ Kitchen of _____
Ingredients	Directions
_____	_____
_____	_____
_____	_____
Original Recipe	

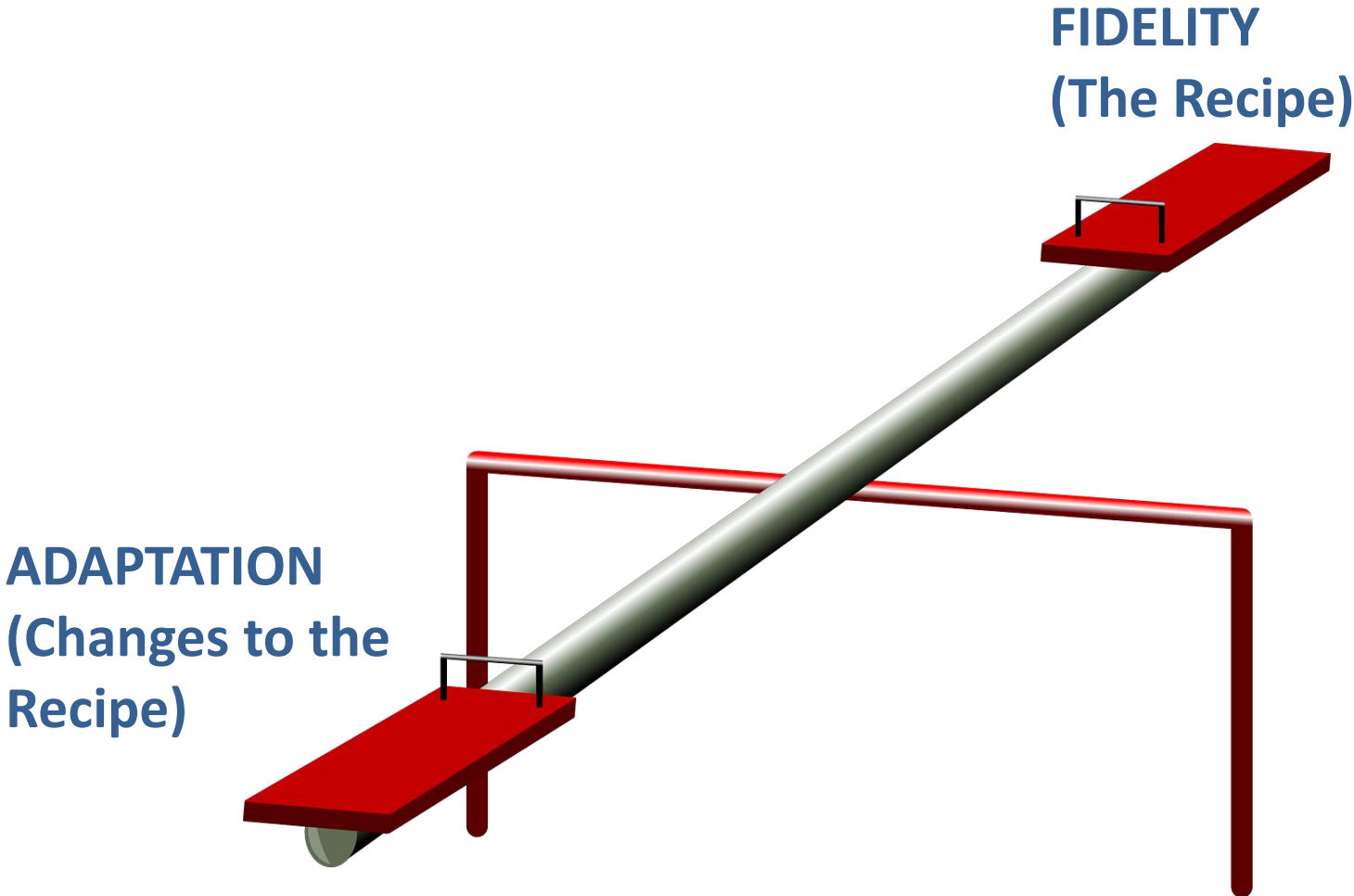


My Neighbor's Cake



	Recipe _____ Kitchen of _____
Ingredients	Directions
_____	_____
_____	_____
_____	_____
Recipe Implemented	

Fidelity and Adaptation “Seesaw”



Core Components

- The most essential and indispensable components of a practice or program
- Represents elements of the practice or program that are:
 - Responsible for how and why we expect change to occur
 - Key delivery steps of an evidence-based approach



Identifying Core Components

Core components can be identified through:

- Program developers and materials
- Research
 - Evaluation reports
 - National registries
 - Peer-reviewed journals
- Guidance from funders



Challenges to Fidelity Include Changing...

- To whom the program was delivered (intended audience, drop outs, new folks added)
- Who delivered the program (facilitator trained, change of facilitator)
- Content (delivered all content as designed?)
- Setting (time, place)
- Method (materials, length, timing, etc.)



Guidelines for Adaptation

- Select programs with the best practical fit to local needs and conditions
- Change capacity before changing the program
- Consult with the program developer
- Retain core components
- Add, rather than subtract

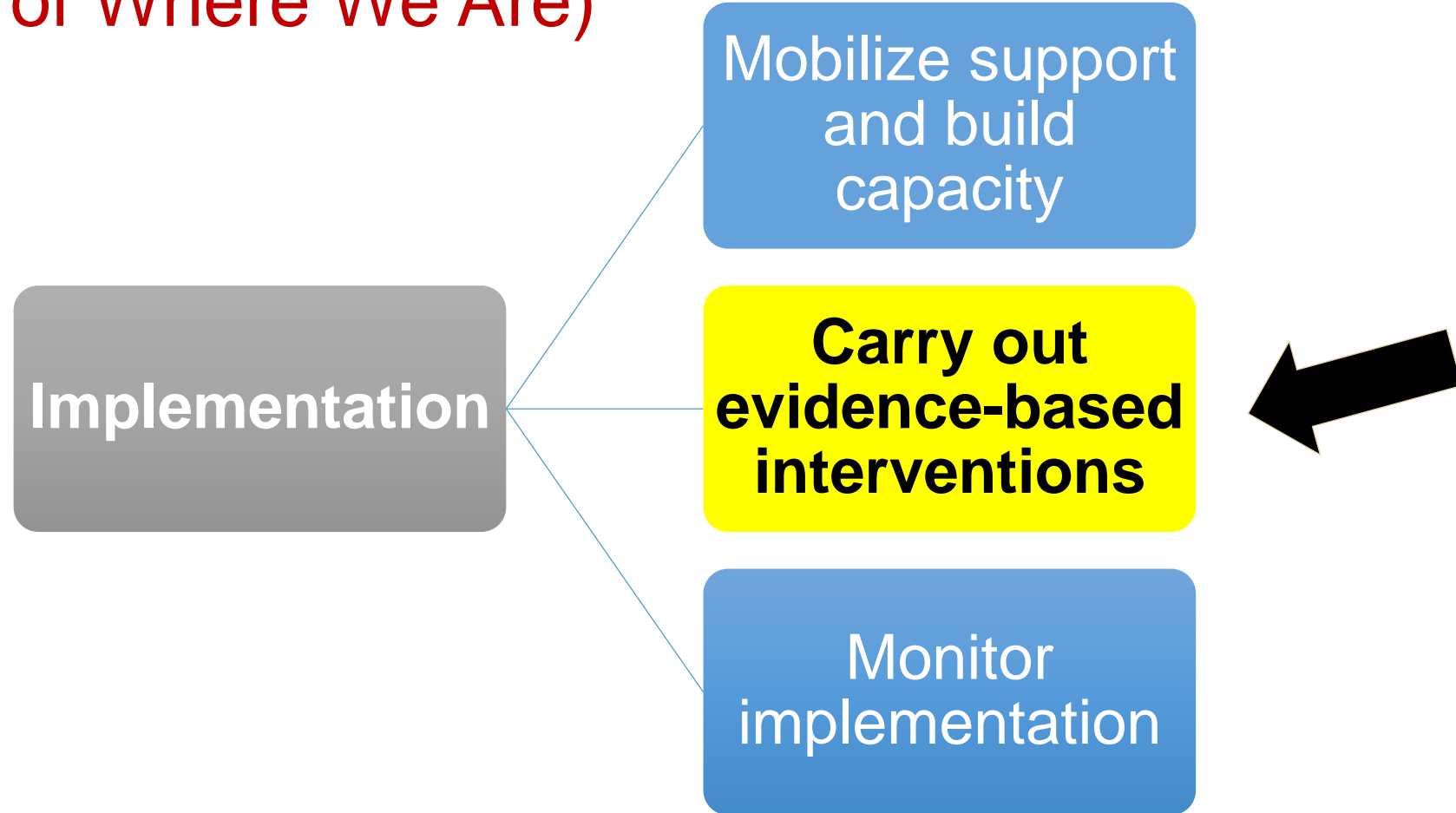


Striking the Right Balance



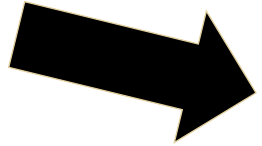
Implementation Task #2

(Reminder of Where We Are)



Task #2 To-do List, part 2

- 2a. Balance fidelity with adaptation
- 2b. Develop and carry out an action plan



2b. Develop and Carry Out an Action Plan

- **Purpose:** To lay out exactly how you will implement a selected program, policy, or strategy
- **Why?** It's important to communicate openly and make sure that all partners are onboard with the implementation plan as you move forward

GOAL * PLAN * SUCCESS

What To Include in Your Action Plan

Task	Who	Timeline	Resources Needed


- The specific tasks and activities necessary for implementation
- Who is responsible for completing each task
- Timeline for completing each task
- Resources needed to complete the task

Scenario: Dram Shop Liability Law Increasing Community Awareness


Your community successfully passed a new dram shop (commercial host) liability law.

- How could you assess and measure the fidelity of implementation?
- What kinds of tasks would you include in an action plan?

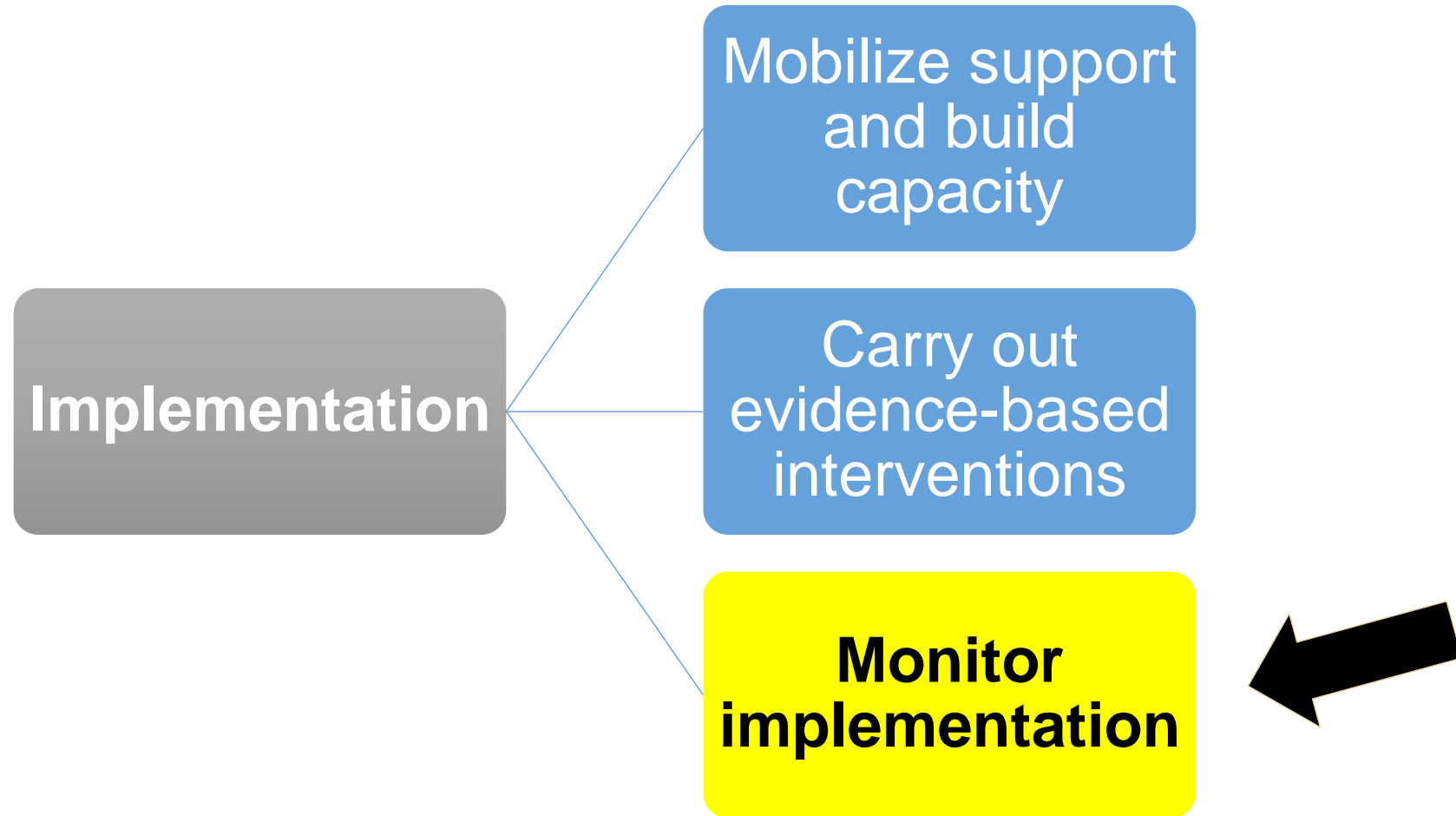




A “Real Life” Example of Task #2



Implementation Task #3



Task #3 To-do List

- 3a. Monitor implementation
- 3b. Make mid-course corrections



3a. Monitoring Implementation

- Is the intervention being implemented as planned?
 - Number of sessions
 - Target population
 - Time table
 - Staffing
 - Setting
- Have adaptations been made to the intervention? If yes, how was the decision made?

3b. Making Mid-course Corrections

If actual implementation differs from the planned implementation:

- Examine the reasons behind the differences
- Once the reason(s) have been identified, work to close the gap as much as possible

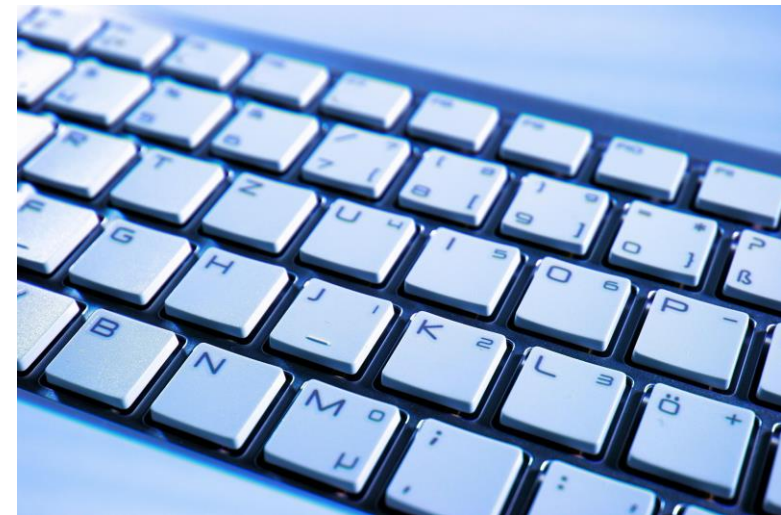



Scenario: Dram Shop Liability Law

Increasing Community Awareness, continued


Your community successfully passed a new dram shop (commercial host) liability law.

- How would you monitor the implementation?
- When and how would you decide to make mid-course corrections?





A “Real Life” Example of Task #3



Topics Covered



im·ple·men·ta·tion

/,ɪmpləˈmɛntəʃ(ə)n/

noun

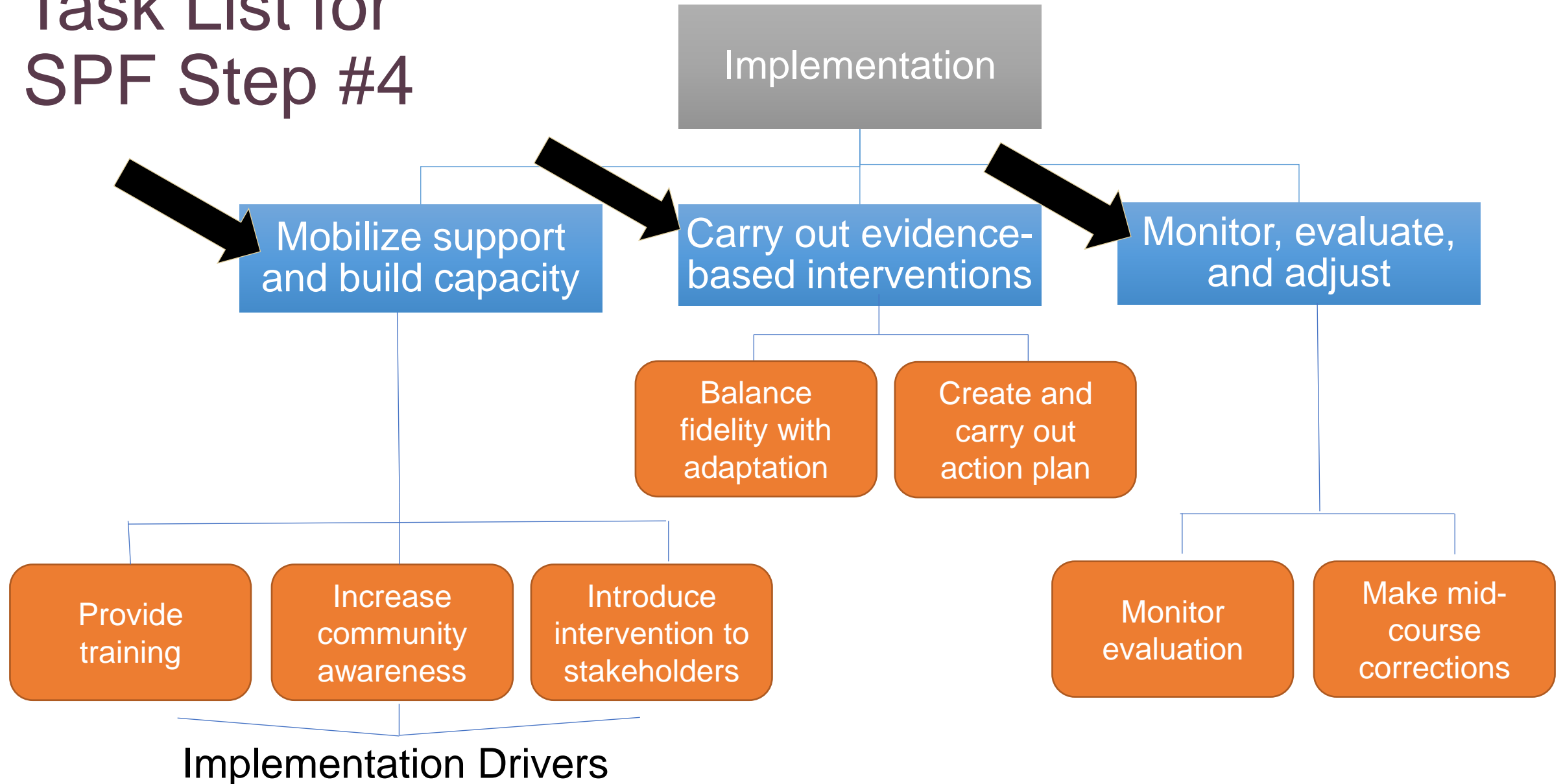
the process of putting a decision or plan into effect; execution.
"she was responsible for the implementation of the plan"



How and Where Implementation Fits into the SPF



Task List for SPF Step #4



Pluses and Wishes

- What worked well for you during this webinar?
- What would you have preferred that we did differently?



Post-Webinar Feedback

Please click on the link in the chat to complete a very brief online feedback form!

Thank you!





Questions? Contact...

Janet Porter, Workforce Development Coordinator
Pacific SW Prevention Technology Transfer Center

jporter@casat.org

530.249.1790

