



Nearly **3 IN 10** Minnesota kids live in poverty or low-income households\*

## POVERTY AND SUBSTANCE USE: BUFFERING THE NEGATIVE EFFECTS

Findings from the 2016 Minnesota Student Survey<sup>^</sup>

**29%** of MN public school students say they receive **free or reduced-price lunch**

**6,500** students say they experienced **homelessness** in the past year

Over **7,500** students say they've had to **skip meals** in the past month

### POVERTY HAS MORE THAN JUST ECONOMIC EFFECTS: STUDENTS WHO MEET **2 OF 3** OF THE ABOVE CRITERIA FOR POVERTY ARE...



**1.9x** more likely to report **alcohol** use



**2.5x** more likely to report **tobacco** use

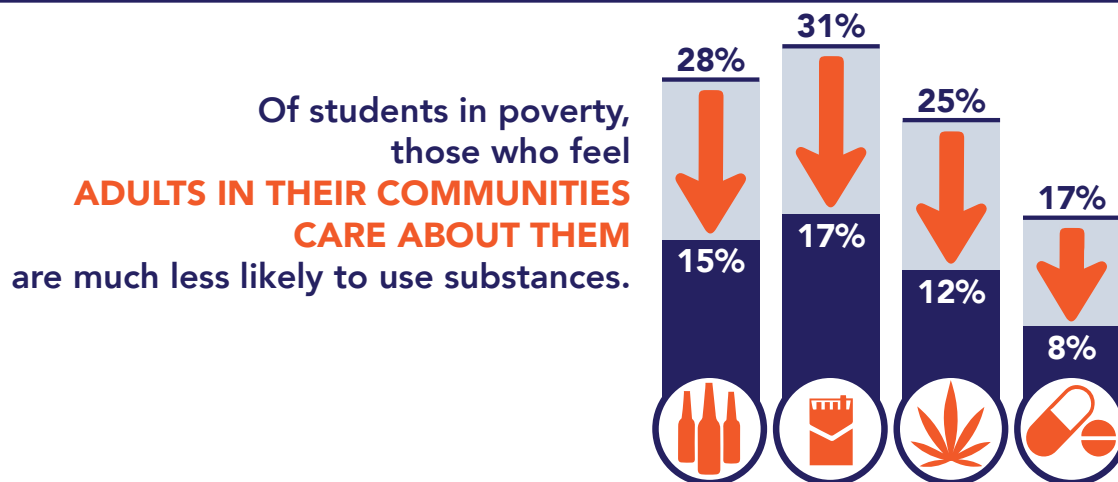


**3.3x** more likely to report **marijuana** use



**4.3x** more likely to report **prescription drug** misuse

### BUT CARING ADULTS CAN BUFFER THE NEGATIVE EFFECTS OF POVERTY:



\*Data from the 2017 KIDS COUNT Data Book:

<http://www.cdf-mn.org/research-library/MN-kids-count/kc-mn-databooks/2017/2017-minnesota-kids-count.pdf>

<sup>^</sup>All other data on Minnesota students from the results of the 2016 Minnesota Student Survey. Nearly 169,000 students participated in the survey. Questions on substance use were answered by 8th, 9th, and 11th graders.

For more information on substance use in Minnesota, see [www.sumn.org](http://www.sumn.org).