

Technical Information

SAMHSA

Substance Abuse and Mental Health
Services Administration

This training was developed under the Substance Abuse and Mental Health Services Administration's Prevention Technology Transfer Center task order. Reference # 1H79SP081018.

For training use only.

Funding for this presentation was made possible by SAMHSA grant no. 1H79SP081018. The views expressed by speakers and moderators do not necessarily reflect the official policies of HHS; nor does mention of trade names, commercial practices, or organizations imply endorsement by the U.S. Government.



Central East (HHS Region 3)

PTTC

LIVE

This webinar is now live.



It is being recorded.



Please remain muted.

Welcome

Central East PTTC Webinar

Prevention Workforce Shortage: How Peers Can Fill the Gap

The Central East PTTC is housed at the Danya Institute in Silver Spring, MD

Oscar Morgan
Executive Director

Deborah Nixon Hughes
Project Director



Central East (HHS Region 3)

PTTC

Each TTC Network includes 13 centers.



Network Coordinating Office

National American Indian and Alaska Native Center

National Hispanic and Latino Center

10 Regional Centers (aligned with HHS regions)

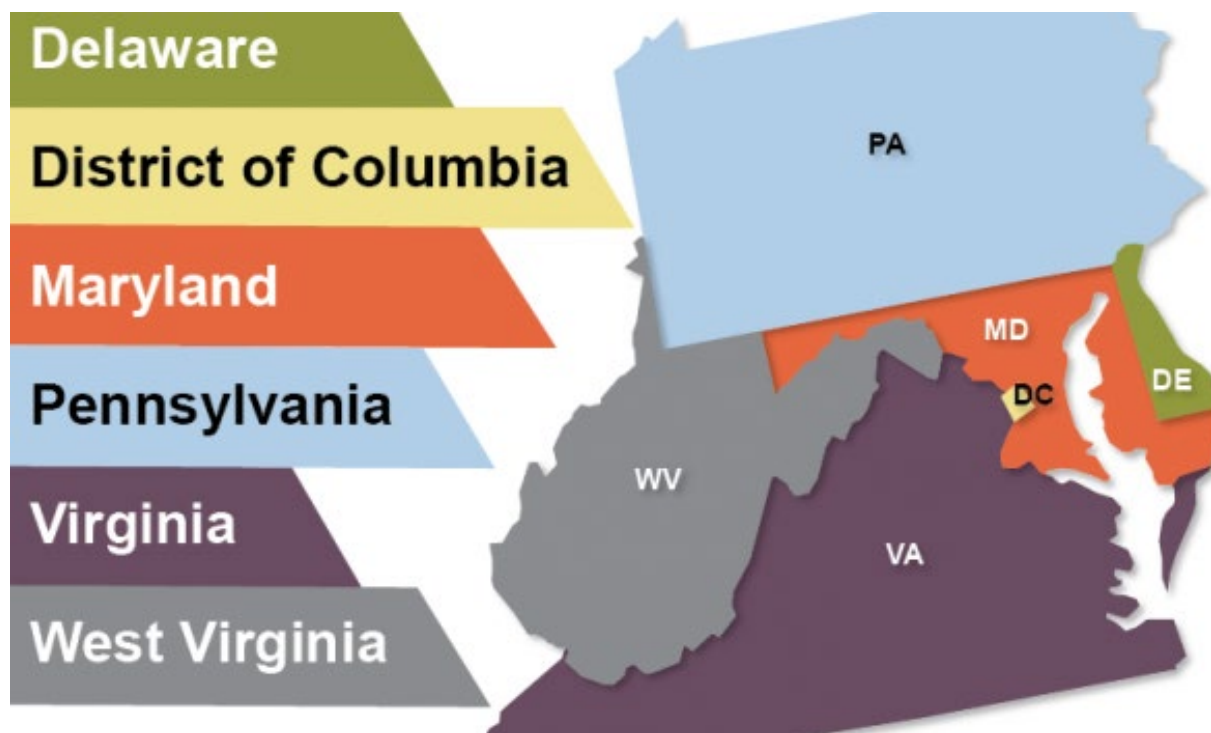


Central East (HHS Region 3)

PTTC

Central East Region

HHS REGION 3



The use of affirming language inspires hope.

LANGUAGE MATTERS.

Words have power.

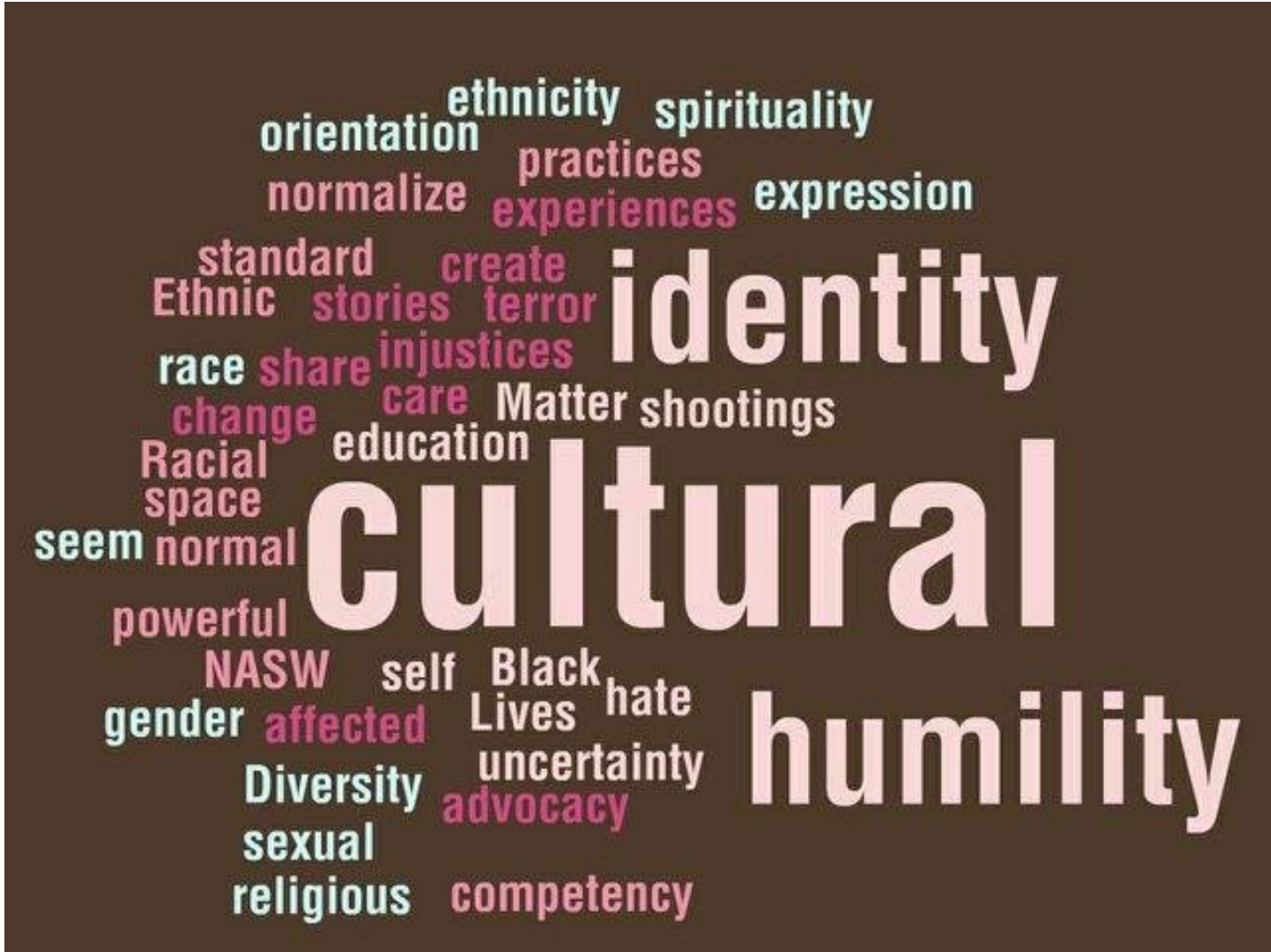
PEOPLE FIRST.

The PTTC Network uses affirming language to promote the application of evidence-based and culturally informed practices.



Central East (HHS Region 3)

PTTC



Central East (HHS Region 3)

PTTC

PTTC Mission



To Strengthen the Capacity of the Workforce

1

To Deliver Evidence-Based Prevention Strategies

2

Facilitate Opportunities for Preventionists to Pursue New Collaboration Opportunities, which include Developing Prevention Partnerships and Alliances

3

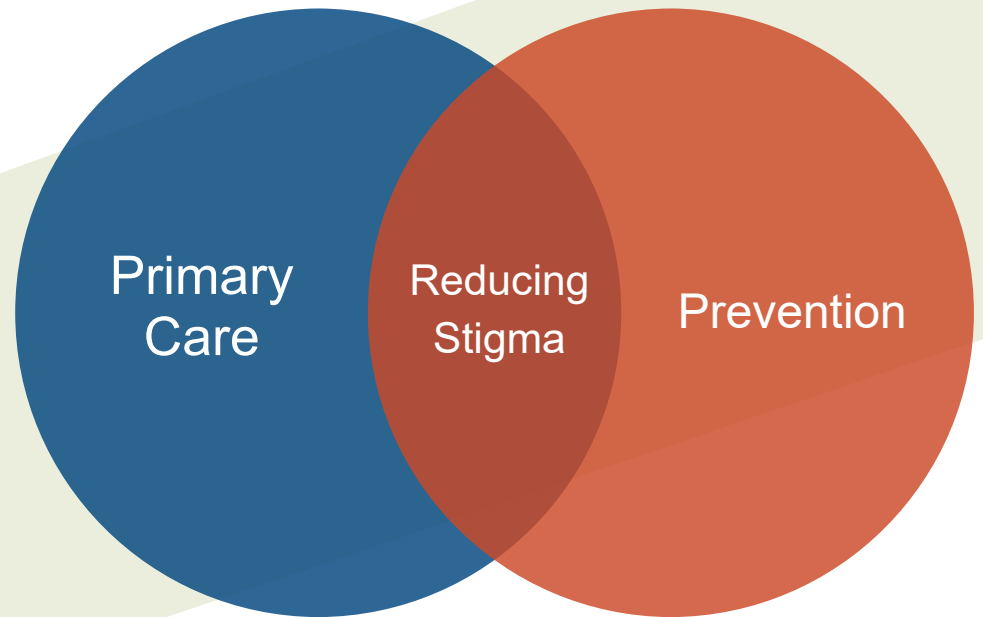


Central East (HHS Region 3)

PTTC

Central East PTTC Specialty Area

Engaging and Collaborating
with Primary Care Providers
for Substance Use
Prevention



Central East (HHS Region 3)

PTTC

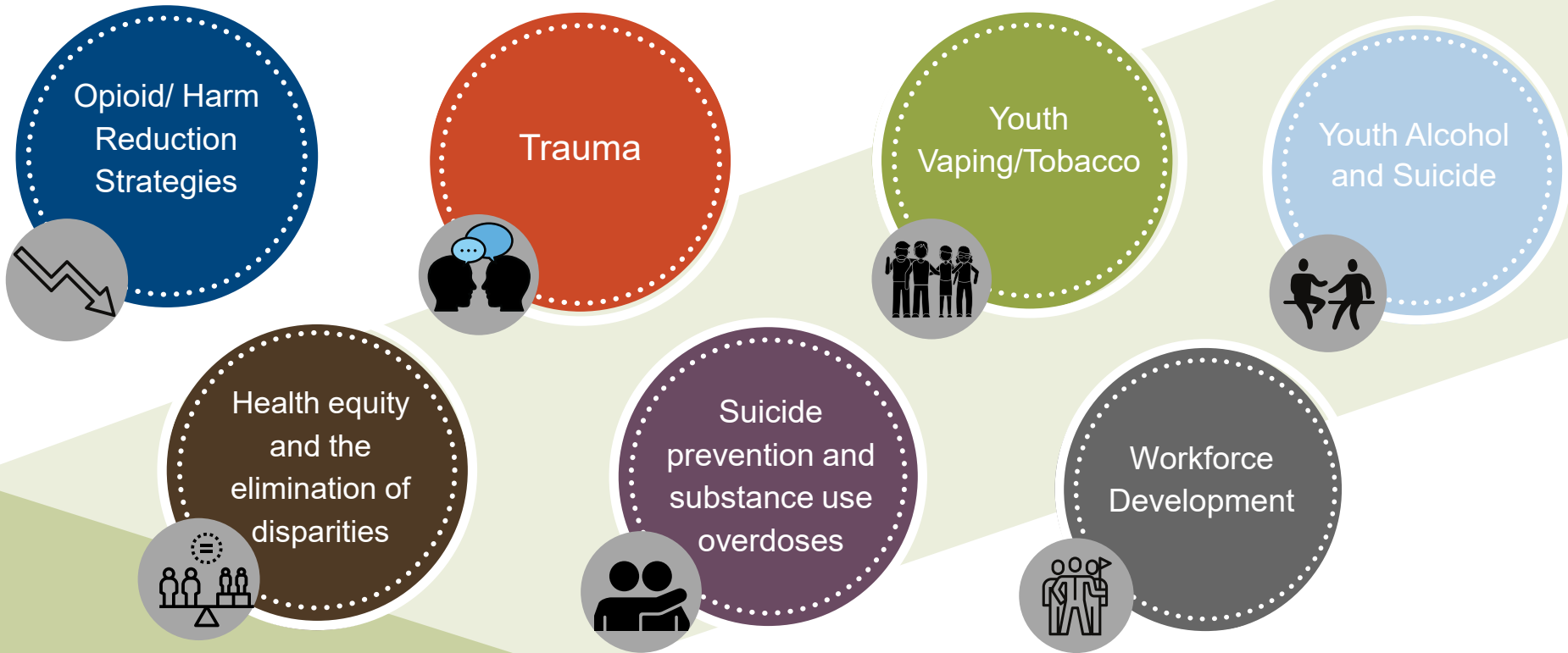
Eligibility



Central East (HHS Region 3)

PTTC

PTTC Focus Areas



Central East (HHS Region 3)

PTTC

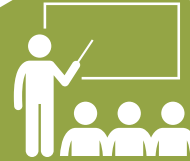
Services Available



Online Courses



Technical Assistance



Skill Based Training



Webinar



Toolkits



Facilitate Prevention Partnership & Alliances



Research Learning Collaborative



Newsletter



Technology Driven Models



Literature Searches



Virtual Meeting



Research Publication



Central East (HHS Region 3)

PTTC

Other Resources in Region 3



Central East (HHS Region 3)

ATTC

Addiction Technology Transfer Center Network
Funded by Substance Abuse and Mental Health Services Administration



Central East (HHS Region 3)

MHTTC

Mental Health Technology Transfer Center Network
Funded by Substance Abuse and Mental Health Services Administration



Central East (HHS Region 3)

PTTC



Central East (HHS Region 3)

PTTC

Prevention Technology Transfer Center Network
Funded by Substance Abuse and Mental Health Services Administration

Prevention Workforce Shortage: How Peers Can Fill the Gap

Jackie Doodley, OCPRS, RCP
Exodus Recovery Support Foundation
exodusrss32@gmail.com

July 20, 2022

SAMHSA
Substance Abuse and Mental Health
Services Administration

 **THE DANYA INSTITUTE**

Special Thanks

**Special Thanks for your guidance on this
Meghann Perry, CARC, RCP, Storyteller
www.meghannperry.com**



Central East (HHS Region 3)

PTTC

What are the gap(s) in prevention services?

Please type your response in the chat.



What are the desired skills & characteristics needed fill the gap(s)?

Please type your responses in the chat or unmute yourself to share



Prevention

Not all people or populations are at the same level of risk

Universal
Selective
Indicated

Recovery Defined

- A process of change through which individuals improve their health and wellness, live a self-directed life, and strive to reach their full potential.
- A Recovery Coach promotes recovery and removes barriers and obstacles to recovery, serving as a personal guide and mentor for people seeking or already in recovery from an addiction to alcohol and or other drugs.

What is a Recovery Coach



Central East (HHS Region 3)

PTTC

Where do Peer Coaches work

- Children Services
- Managed Care Providers
- Hospitals
- Behavioral Health
- Peer Run Organizations (PRO)
- Criminal Justice, Drug Courts, Family Courts
- Churches
- Restaurants

Who will you hire?

- A peer offers an opportunity for an authentic conversation about the realities of substance use from their own personal experience.
- Are trained in advocacy for self, others, and the larger community.
- Stigma Busters
- Peers are encouraged to become lifelong learners.

Similarities

- Evolve with SUD trends
- Culturally Competent
- Trauma Informed & Sensitive
- Works with clinical team, individual, and families
- Evolves to meet SUD trends
- Culturally Competent
- Dynamic & interactive
- Data Driven
- Reliant on and encourages a team approach.



Central East (HHS Region 3)

PTTC

Roles

Promote Recovery (Healthy Living)

Remove Barriers

Connect with larger supports

**Encourage hope,
and optimism**



Central East (HHS Region 3)

PTTC

Competency

Certification

Ethics

**Agency Code of Conduct
Policies & Procedures**



Central East (HHS Region 3)

PTTC

How is the work governed?

Guiding Principles
Recovery Core Values
Ten Components of Recovery



Central East (HHS Region 3)

PTTC

Certification

Virginia

[Getting Started | Virginia Peer Recovery Specialist Network \(viriniapeerspecialistnetwork.org\)](#)

DC

[Peer Specialist Certification Program | dmh \(dc.gov\)](#)

West Virginia

[Peer Recovery Support Specialist | WVU Parkersburg](#)

Certification

PA

[Certified Peer Specialist \(CPS\) | Pennsylvania Certification Board \(pacertboard.org\)](#)

DE

[Certifications | Delaware Certification Board \(decertboard.org\)](#)

Virginia

[Getting Started | Virginia Peer Recovery Specialist Network \(viriniapeerspecialistnetwork.org\)](#)

Conclusion

- Peers help reduce, “you wouldn’t understand”
- Don’t overly rely on one perception of experience related to the peer work
- My lived experience is not my skill set
- My skill set informs how I relate
- My skill set as a Peer is what is reliable

Conclusion

- Prevention programs and practices are most effective when they are matched to their target population's level of risk. Prevention programs and practices fall into three broad categories.



Jackie Doodley, OCPRS, RCP
exodusrss32@gmail.com

Contact Us



Central East (HHS Region 3)

PTTC

Prevention Technology Transfer Center Network

Funded by Substance Abuse and Mental Health Services Administration

a program managed by



THE DANYA INSTITUTE

Central East PTTC website:
www.pttcnetwork.org/centraleast

Danya Institute website:
www.danyainstitute.org

Deborah Nixon-Hughes, Director:
dhughes@danyainstitute.org

Danya Institute email and phone:
info@danyainstitute.org
(240) 645-1145

Funding for this presentation was made possible by SAMHSA grant no. 1H79SP081018. The views expressed by speakers and moderators do not necessarily reflect the official policies of HHS; nor does mention of trade names, commercial practices, or organizations imply endorsement by the U.S. Government.



Central East (HHS Region 3)

PTTC