

Technical Information

SAMHSA

Substance Abuse and Mental Health
Services Administration

This training was developed under the Substance Abuse and Mental Health Services Administration's Prevention Technology Transfer Center task order. Reference # 1H79SP081018.

For training use only.

Funding for this presentation was made possible by SAMHSA grant no. 1H79SP081018. The views expressed by speakers and moderators do not necessarily reflect the official policies of HHS; nor does mention of trade names, commercial practices, or organizations imply endorsement by the U.S. Government.



Central East (HHS Region 3)

PTTC

LIVE

This webinar is now live.



It is being recorded.



Please remain muted.

Welcome

Central East PTTC Webinar

Many Paths, One Objective: Recovery

The Central East PTTC is housed at the Danya Institute in Silver Spring, MD

Oscar Morgan
Acting Executive Director

Deborah Nixon Hughes
Project Director



Central East (HHS Region 3)

PTTC

Each TTC Network includes 13 centers.



Network Coordinating Office

National American Indian and Alaska Native Center

National Hispanic and Latino Center

10 Regional Centers (aligned with HHS regions)

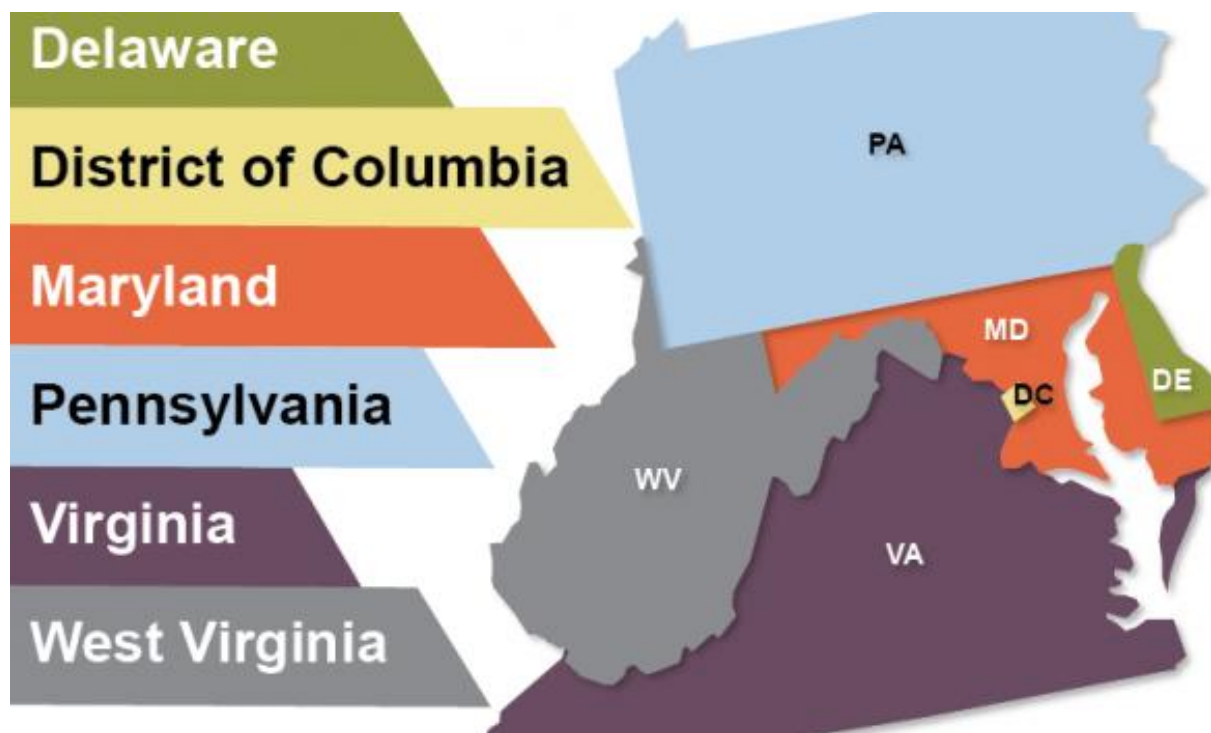


Central East (HHS Region 3)

PTTC

Central East Region

HHS REGION 3



The use of affirming language inspires hope.

LANGUAGE MATTERS.

Words have power.

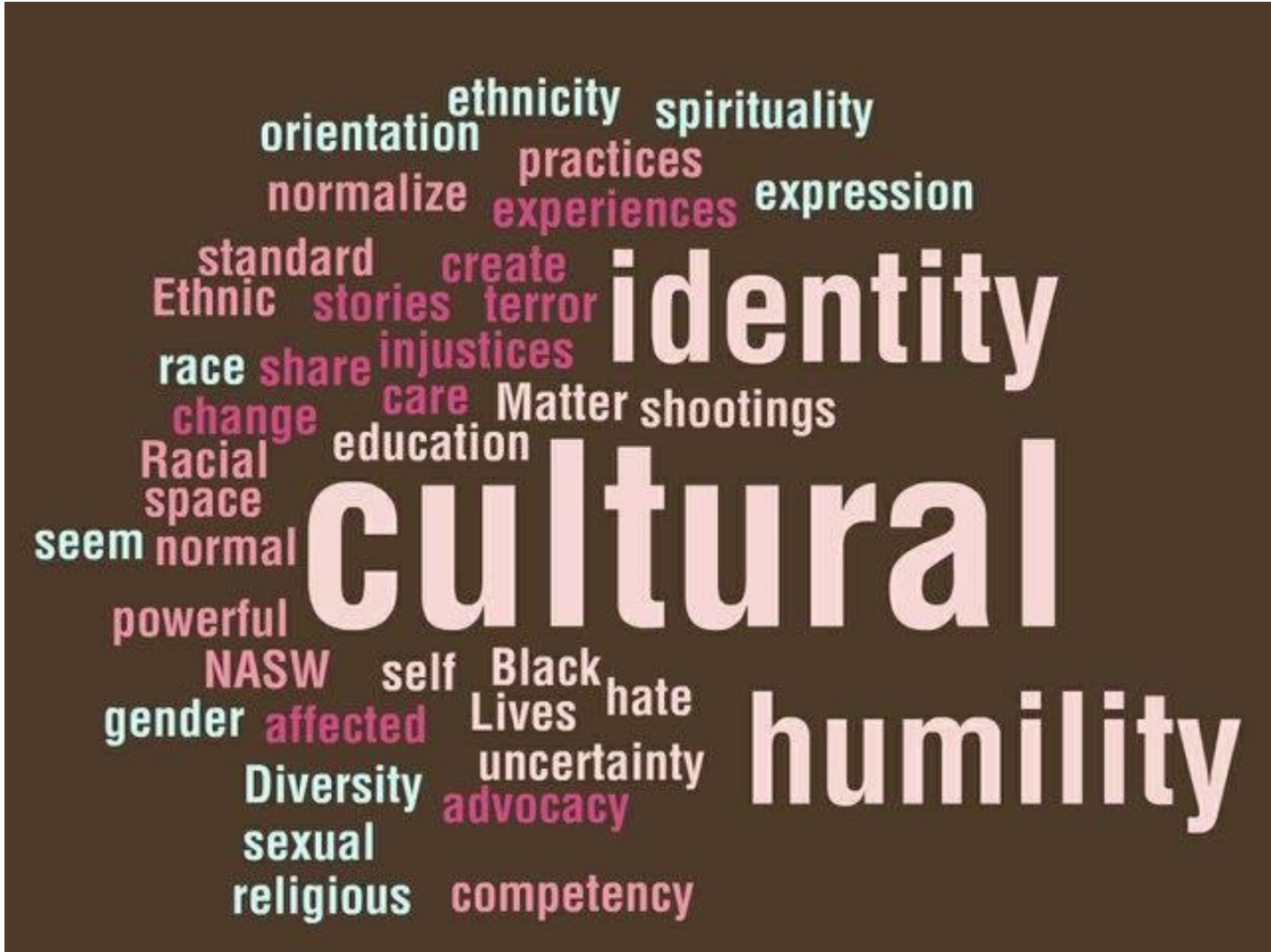
PEOPLE FIRST.

The PTTC Network uses affirming language to promote the application of evidence-based and culturally informed practices.



Central East (HHS Region 3)

PTTC



Central East (HHS Region 3)

PTTC

PTTC Mission



To Strengthen the Capacity of the Workforce

1

To Deliver Evidence-Based Prevention Strategies

2

Facilitate Opportunities for Preventionists to Pursue New Collaboration Opportunities, which include Developing Prevention Partnerships and Alliances

3

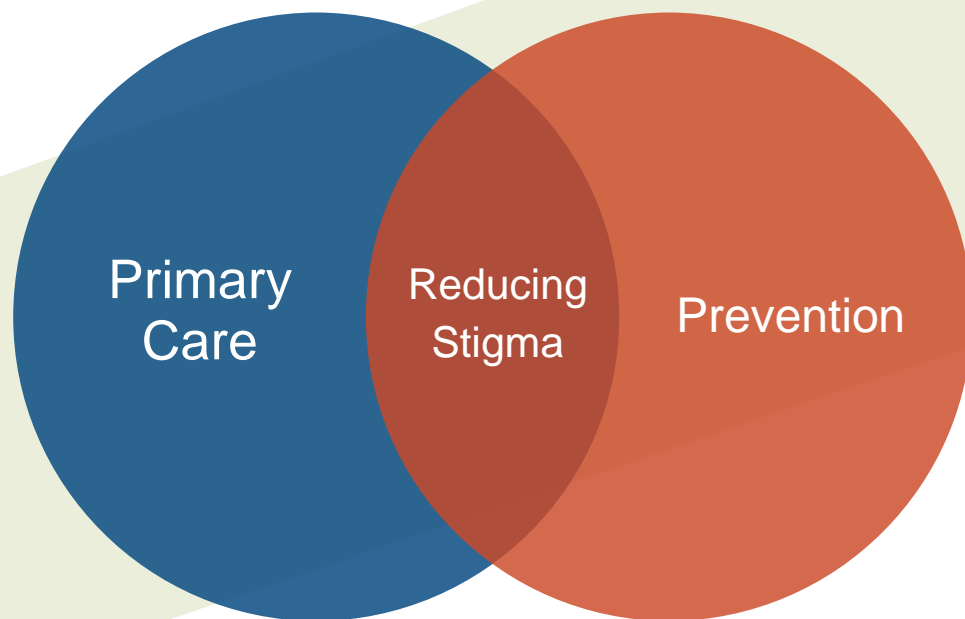


Central East (HHS Region 3)

PTTC

Central East PTTC Specialty Area

Engaging and Collaborating
with Primary Care Providers
for Substance Use
Prevention



Central East (HHS Region 3)

PTTC

Eligibility

Consistent with
Regional, State and
Local Needs

No Cost



Data Driven

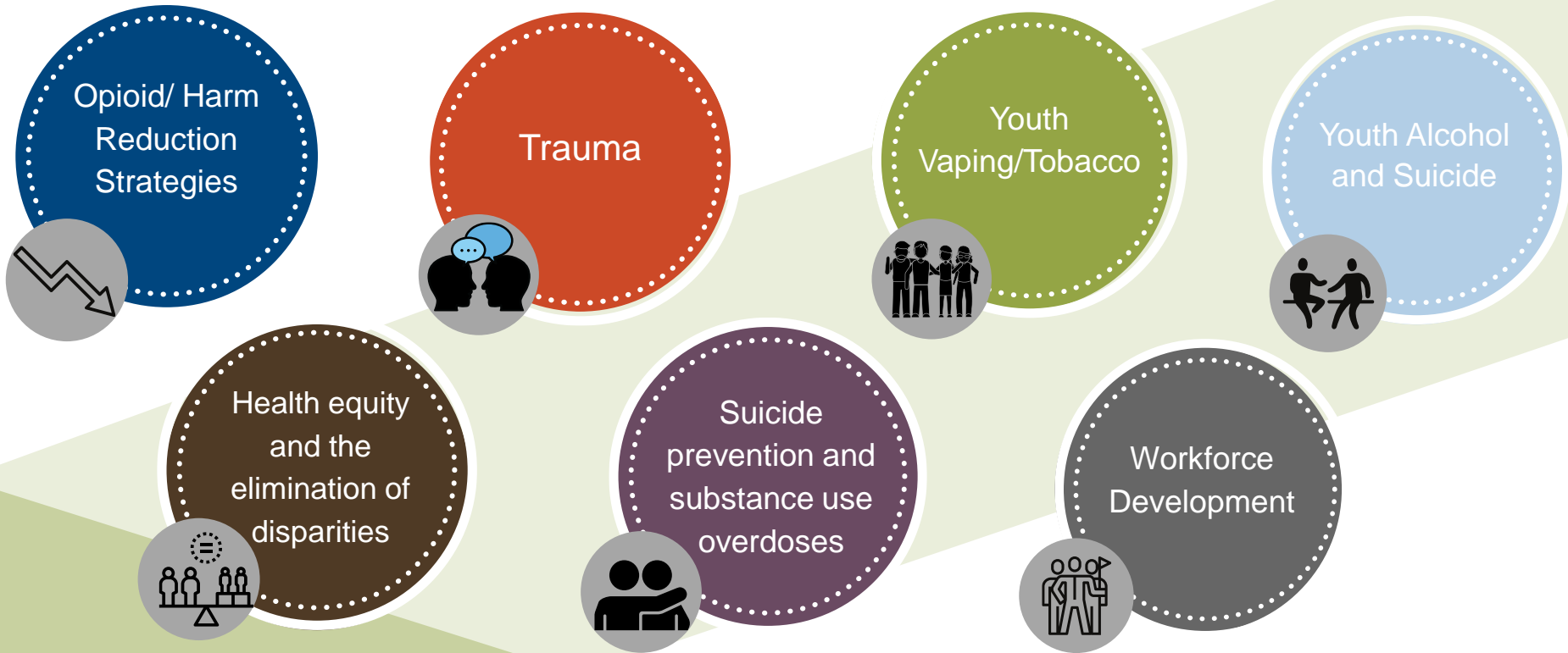
EBPs provided by
Subject Matter
Experts



Central East (HHS Region 3)

PTTC

PTTC Focus Areas



Central East (HHS Region 3)

PTTC

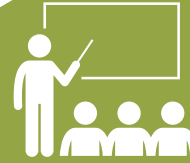
Services Available



Online Courses



Technical Assistance



Skill Based Training



Webinar



Toolkits



Facilitate Prevention Partnership & Alliances



Research Learning Collaborative



Newsletter



Technology Driven Models



Literature Searches



Virtual Meeting



Research Publication



Central East (HHS Region 3)

PTTC

Other Resources in Region 3



Central East (HHS Region 3)

ATTC

Addiction Technology Transfer Center Network
Funded by Substance Abuse and Mental Health Services Administration



Central East (HHS Region 3)

MHTTC

Mental Health Technology Transfer Center Network
Funded by Substance Abuse and Mental Health Services Administration



Central East (HHS Region 3)

PTTC



Central East (HHS Region 3)

PTTC

Prevention Technology Transfer Center Network

Funded by Substance Abuse and Mental Health Services Administration





Central East (HHS Region 3)

PTTC

Prevention Technology Transfer Center Network

Funded by Substance Abuse and Mental Health Services Administration

Many Paths, One Objective: Recovery

Demetrie Garner

Lisa Connors

Maurice Harrison-EI

September 29, 2022

SAMHSA
Substance Abuse and Mental Health
Services Administration

 **THE DANYA INSTITUTE**

Course Description

Recovery Month seeks to promote and support innovative treatments and practices while celebrating individuals in recovery and the dedication of service providers and community members across the country who make recovery obtainable for all who need it the most. This webinar will examine the scope of peers' roles and how they execute a holistic approach within their communities. We will unpack the barriers peers have while working with marginalized and vulnerable communities and the actions taken to ensure equitable treatment to the clients they serve. This webinar will also explore the techniques used by peers to address the ever evolving needs of communities.



Central East (HHS Region 3)

PTTC

Learning Objectives

1. Explain 2-3 SAMSHA's guiding principles of recovery and their connection to individuals, families and communities
2. Define the roles of peers and examine their contribution to holistic approach to recovery
3. Explore the barriers of social determinants of health and challenges clients face seeking recovery
4. Give example of how partnership are formulated to ensure healthier individuals and communities.



Central East (HHS Region 3)

PTTC

Guiding Principles of Recovery and Their Connections to Individuals, Families and Communities

Health

Overcome/
manage
ones disease

Physically
and
emotionally
healthy

Home

Safe and
stable

Supports
recovery

Purpose

Creative
endeavors:
job, school,
family,
caretaking,
independence

Income and
resources to
participate in
society

Community

Social
networks and
Relationships

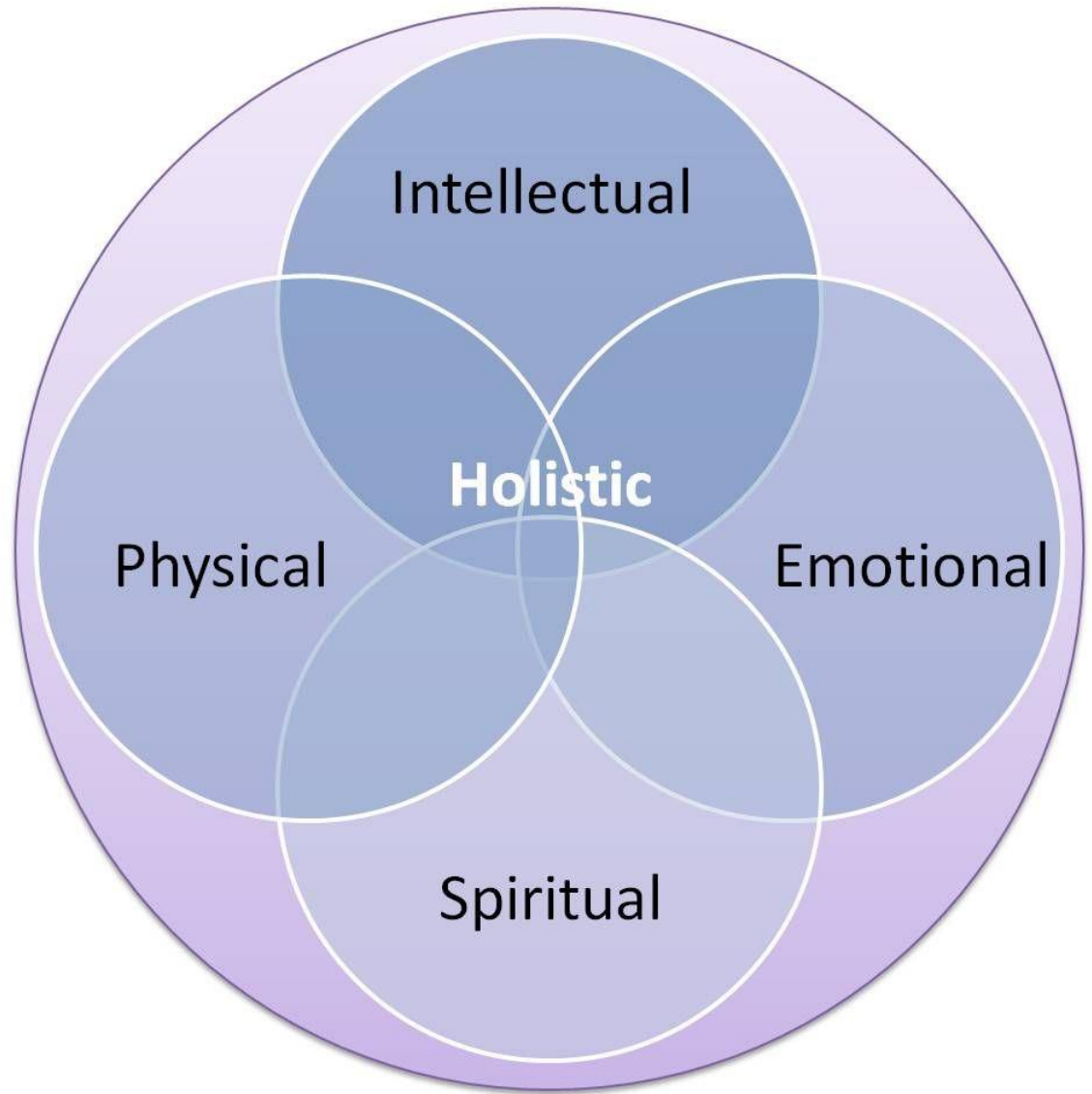
Support,
love,
friendship,
hope



Central East (HHS Region 3)

PTTC

Peers
Contribution To
The Holistic
Approach To
Recovery



Central East (HHS Region 3)

PTTC

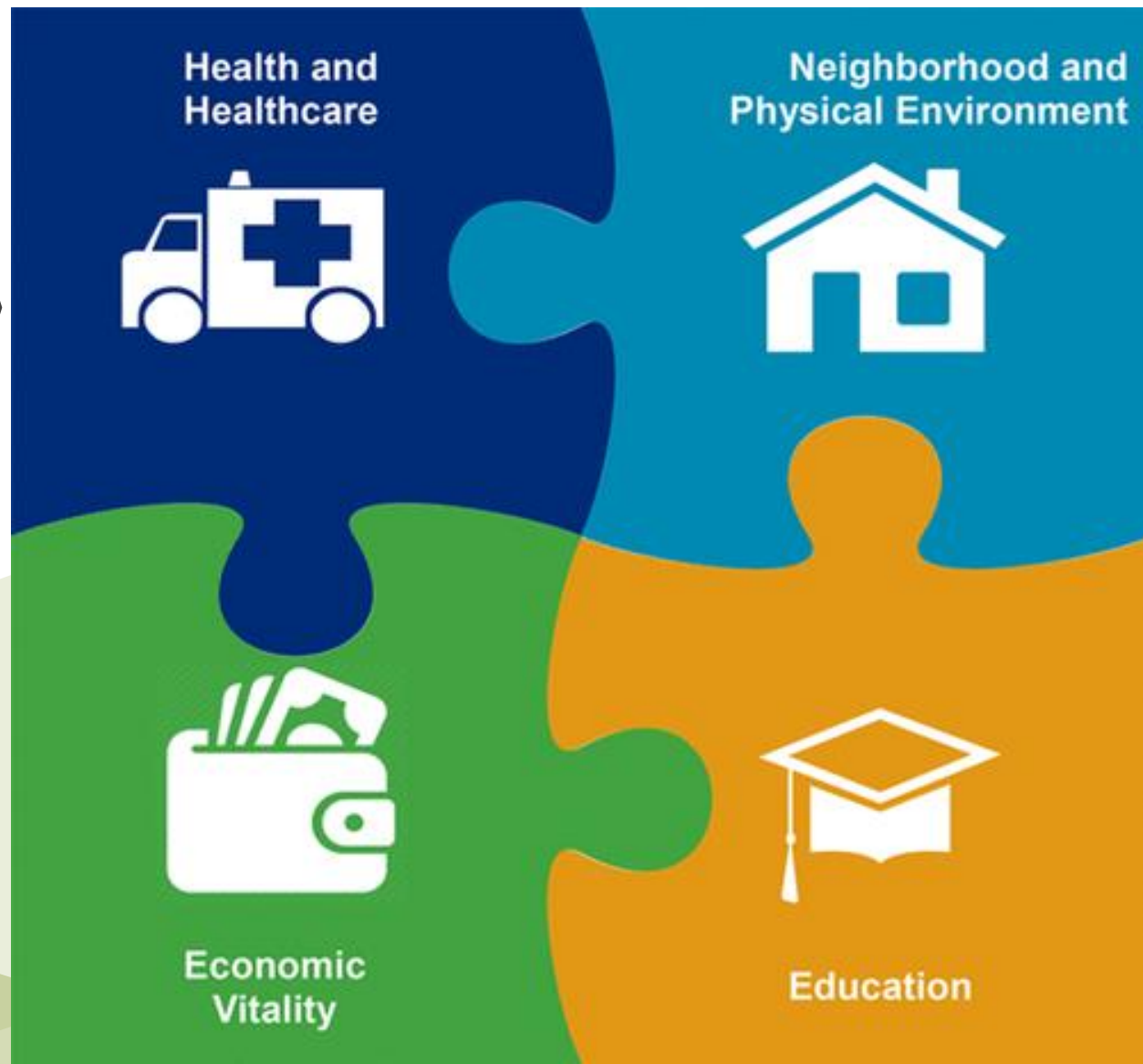
Barriers Of Social Determinants Of Health And The Challenges Clients Face



Central East (HHS Region 3)

PTTC

Partnerships are formulated to ensure healthier individuals and communities.



Central East (HHS Region 3)

PTTC



Q & A

Demetrie Garner
dgarner2@umbc.edu

Lisa Conners
4kscandtsolutions@gmail.com

Maurice Harrison-El
maurice.harrison-el@medstar.net

Contact Us



Central East (HHS Region 3)

PTTC

Prevention Technology Transfer Center Network

Funded by Substance Abuse and Mental Health Services Administration

a program managed by



Central East PTTC website:
www.pttcnetwork.org/centraleast

Danya Institute website:
www.danyainstitute.org

Deborah Nixon-Hughes, Director:
dhughes@danyainstitute.org

Danya Institute email and phone:
info@danyainstitute.org
(240) 645-1145

Funding for this presentation was made possible by SAMHSA grant no. 1H79SP081018. The views expressed by speakers and moderators do not necessarily reflect the official policies of HHS; nor does mention of trade names, commercial practices, or organizations imply endorsement by the U.S. Government.



Central East (HHS Region 3)

PTTC