

Technical Information

SAMHSA

Substance Abuse and Mental Health
Services Administration

This training was developed under the Substance Abuse and Mental Health Services Administration's Prevention Technology Transfer Center task order. Reference # 1H79SP081018.

For training use only.

Funding for this presentation was made possible by SAMHSA grant no. 1H79SP081018. The views expressed by speakers and moderators do not necessarily reflect the official policies of HHS; nor does mention of trade names, commercial practices, or organizations imply endorsement by the U.S. Government.



Central East (HHS Region 3)

PTTC

LIVE

This webinar is now live.



It is being recorded.



Please remain muted.

Welcome

Central East PTTC Webinar

Understanding Risk and Protective Factors for Addiction:

Genetic, Environmental, and Individual Factors

The Central East PTTC is housed at the Danya Institute in Silver Spring, MD

Oscar Morgan
Executive Director

Deborah Nixon Hughes
Project Director



Central East (HHS Region 3)

PTTC

Each TTC Network includes 13 centers.



Network Coordinating Office

National American Indian and Alaska Native Center

National Hispanic and Latino Center

10 Regional Centers (aligned with HHS regions)

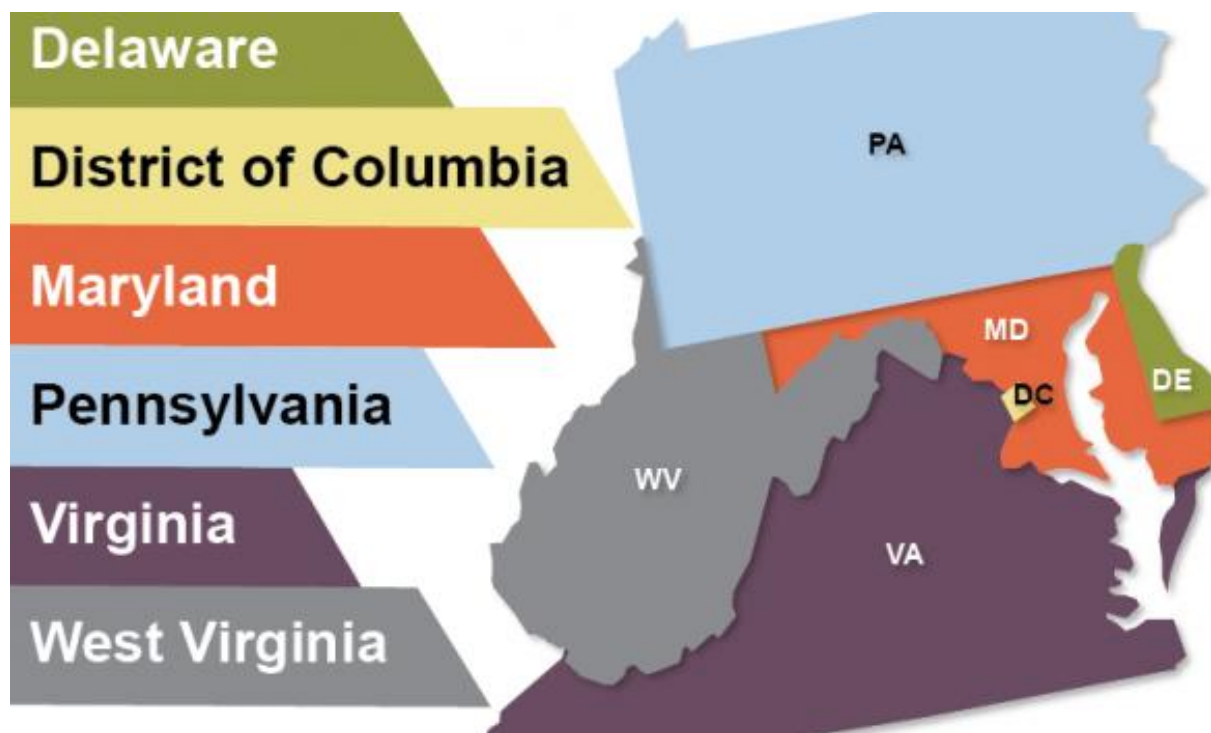


Central East (HHS Region 3)

PTTC

Central East Region

HHS REGION 3



Central East (HHS Region 3)

PTTC

The use of affirming language inspires hope.

LANGUAGE MATTERS.

Words have power.

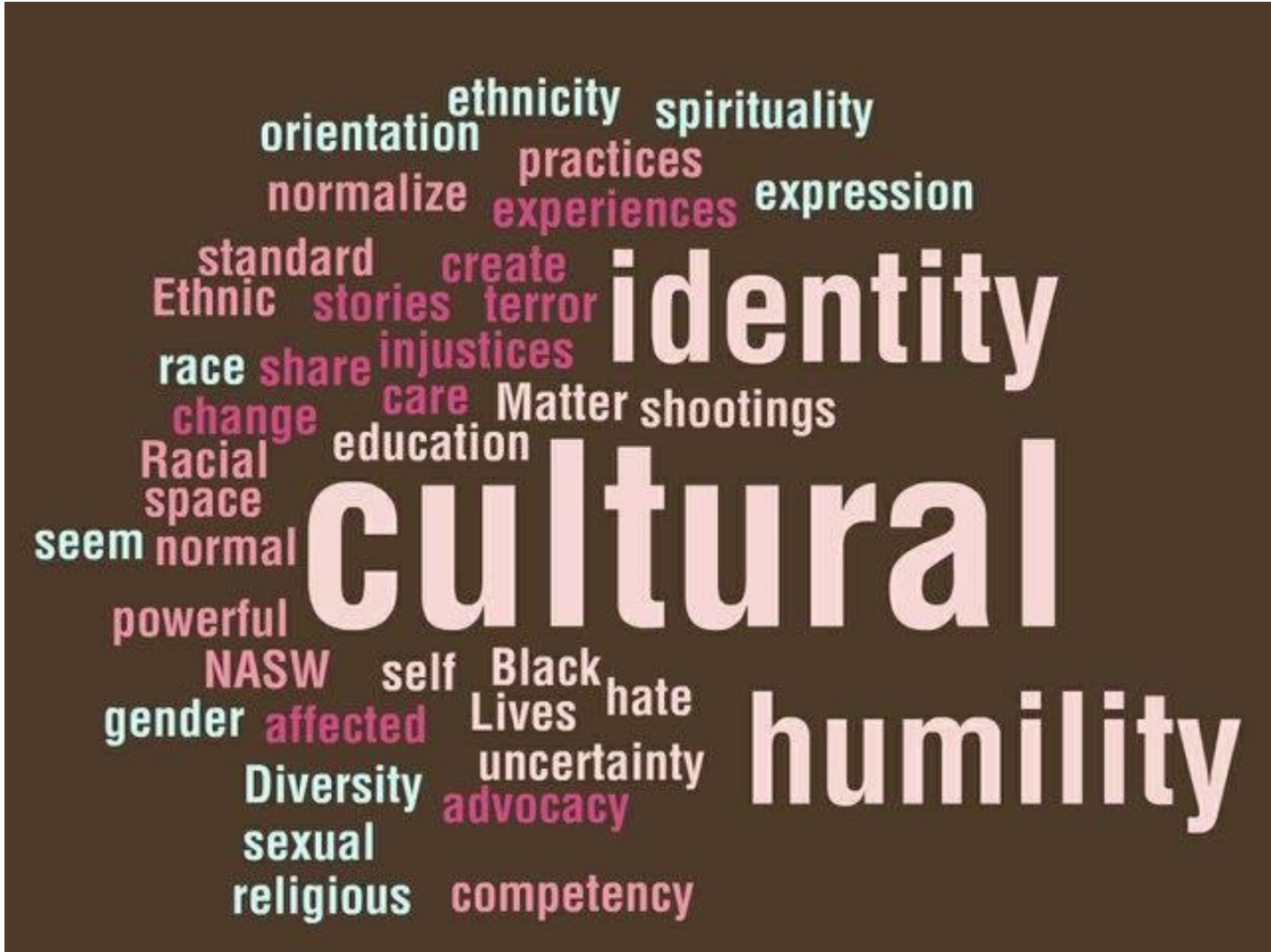
PEOPLE FIRST.

The PTTC Network uses affirming language to promote the application of evidence-based and culturally informed practices.



Central East (HHS Region 3)

PTTC



Central East (HHS Region 3)

PTTC

PTTC Mission



To Strengthen the Capacity of the Workforce

1

To Deliver Evidence-Based Prevention Strategies

2

Facilitate Opportunities for Preventionists to Pursue New Collaboration Opportunities, which include Developing Prevention Partnerships and Alliances

3

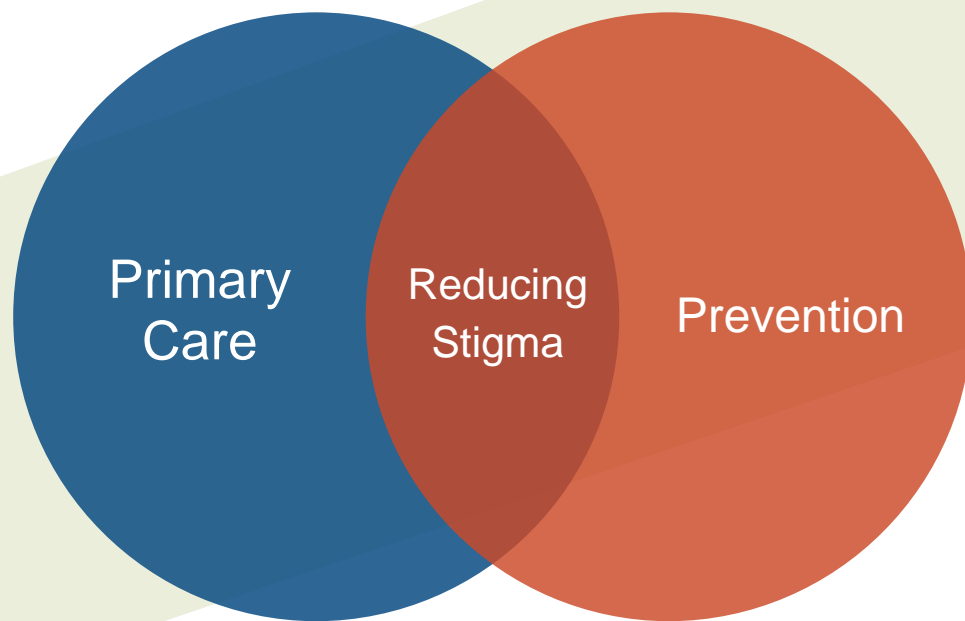


Central East (HHS Region 3)

PTTC

Central East PTTC Specialty Area

Engaging and Collaborating
with Primary Care Providers
for Substance Use
Prevention



Central East (HHS Region 3)

PTTC

Eligibility

Consistent with
Regional, State and
Local Needs

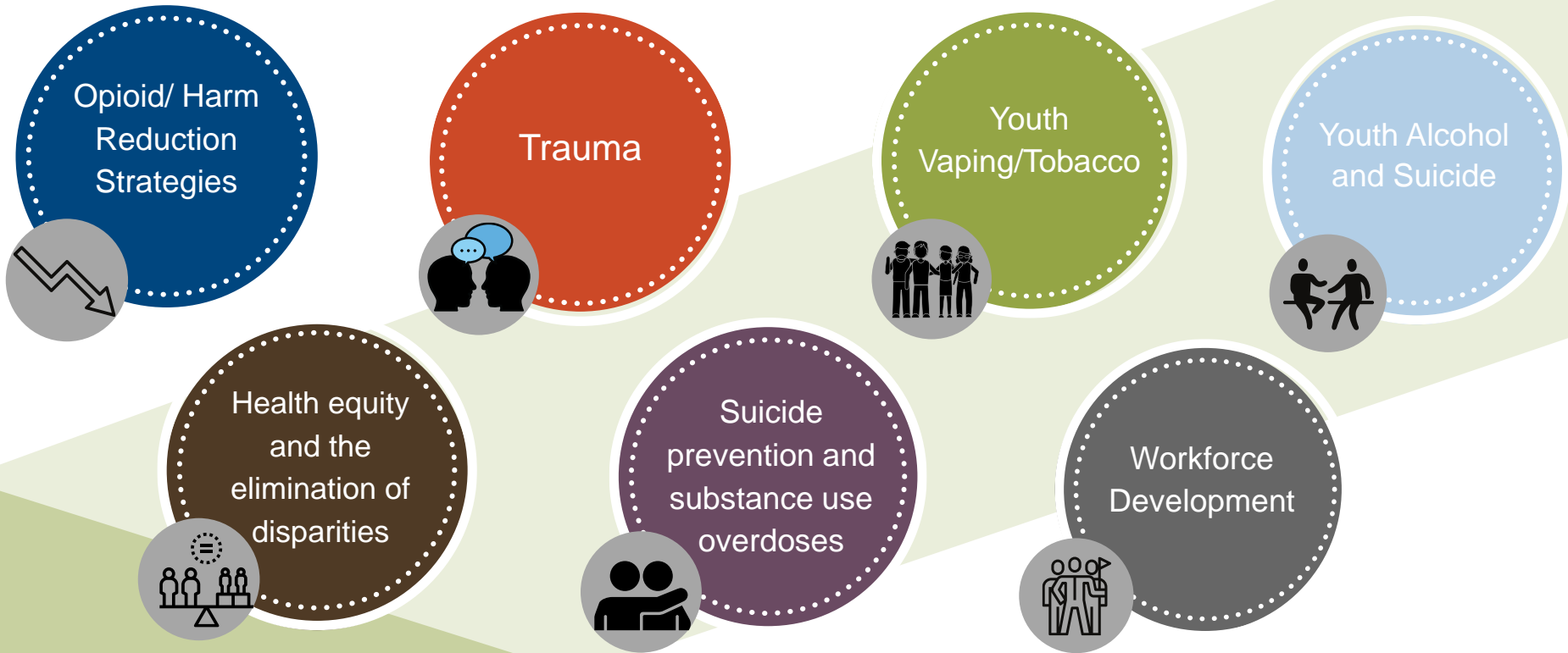
No Cost

Data Driven

EBPs provided by
Subject Matter
Experts



PTTC Focus Areas



Central East (HHS Region 3)

PTTC

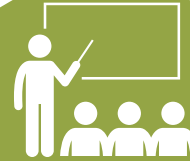
Services Available



Online Courses



Technical Assistance



Skill Based Training



Webinar



Toolkits



Facilitate Prevention Partnership & Alliances



Research Learning Collaborative



Newsletter



Technology Driven Models



Literature Searches



Virtual Meeting



Research Publication



Central East (HHS Region 3)

PTTC

Other Resources in Region 3



Central East (HHS Region 3)

ATTC

Addiction Technology Transfer Center Network
Funded by Substance Abuse and Mental Health Services Administration



Central East (HHS Region 3)

MHTTC

Mental Health Technology Transfer Center Network
Funded by Substance Abuse and Mental Health Services Administration



Central East (HHS Region 3)

PTTC



Understanding Risk and Protective Factors for Addiction:

Genetic, Environmental, and Individual Factors

Jessica Hulsey



Mission

Addiction Policy Forum



Our Mission

We lead the fight against the deadly consequences of addiction and help patients, families, and communities affected by the disease.

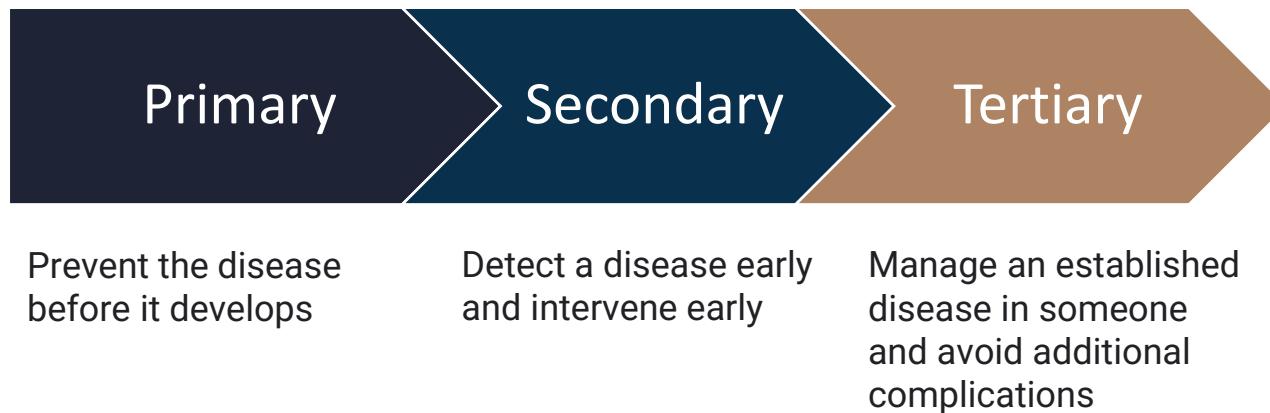
Our Vision

Our vision is to eliminate addiction as a major health problem.

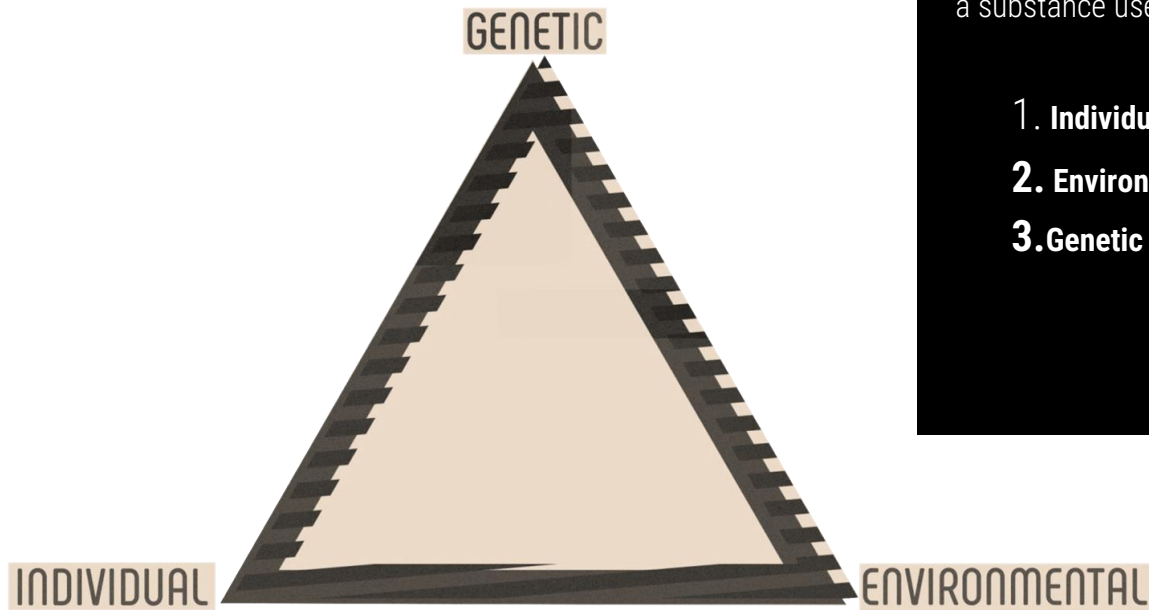


Understanding Prevention

A public health model that attempts to prevent or reduce a particular illness or social problem in a population by identifying risk indicators.



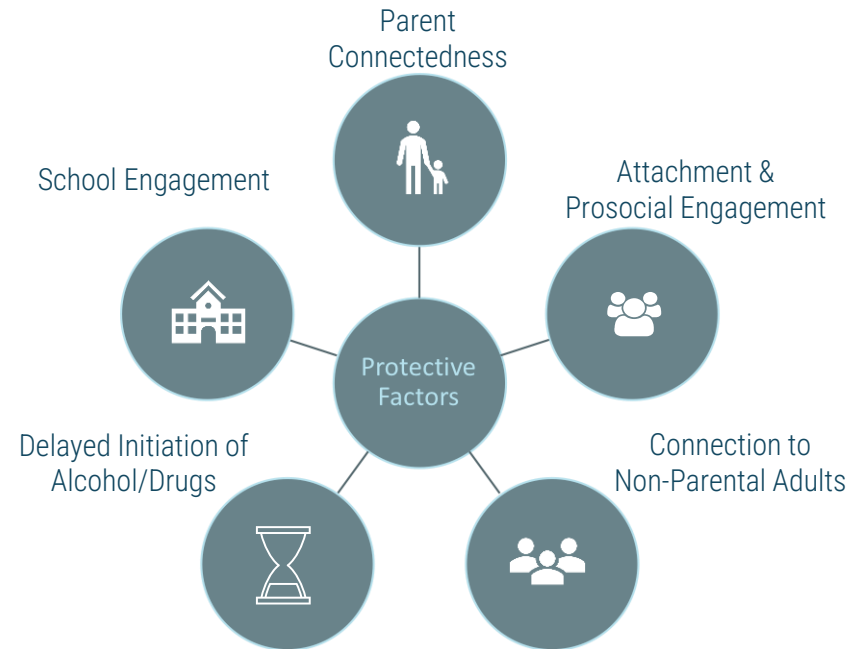
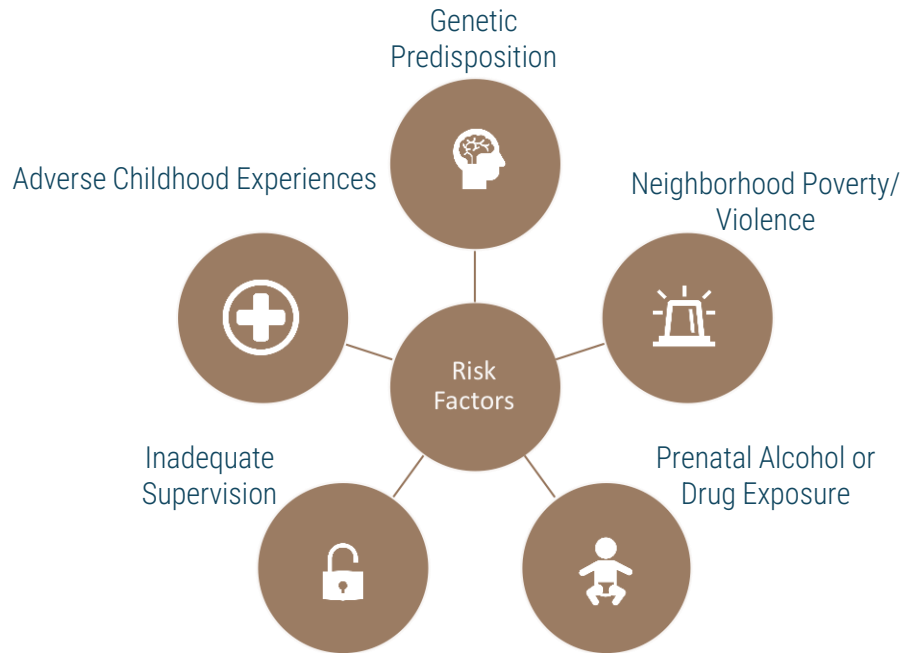
Risk Factors



Three main factors that contribute to the development of a substance use disorder are:

1. **Individual factors**, like the age of first use;
2. **Environmental factors**, like availability; and drug
3. **Genetic factors**, like a family history of addiction.

Risk & Protective Factors



Age of Initiation

A key element in preventing addiction is delaying the initiation of substance use until the brain is fully developed.



90%

of American adults with a SUD initiated use before the age of 18.



1 in 4

people who initiate substance use before age 18 develop a SUD, compared to **1 in 25** who delay use until age 21 or older.



Patient Journey Map: Understanding Risk Factors for Addiction

- Average age of onset is 14 years old
- 85% of patients report a family history of SUD



Protect Your Brain

During the ages of 10-19, the brain is changing rapidly. Because of this, it's extremely important to protect your brain.

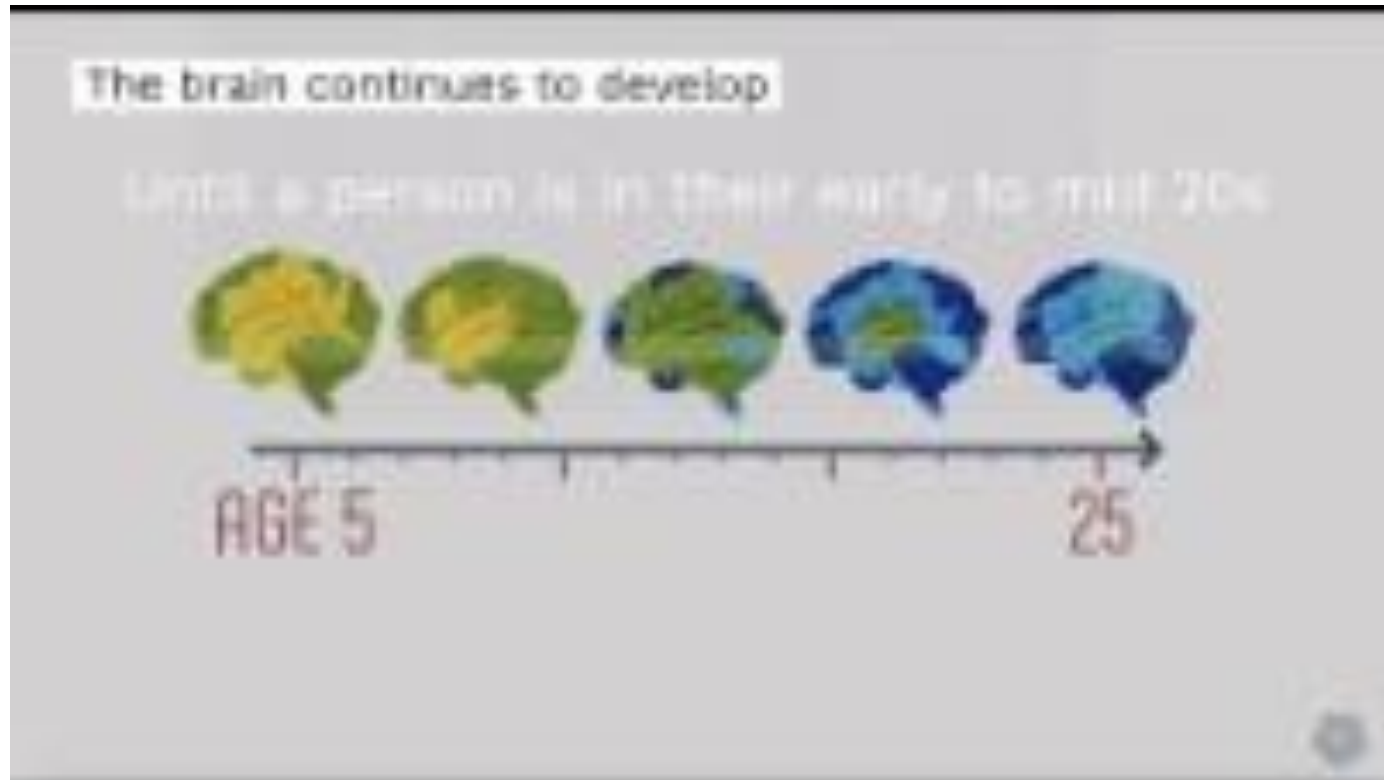
In this video, we share four strategies teens can use to protect their brains and stay safe from substance use disorders.



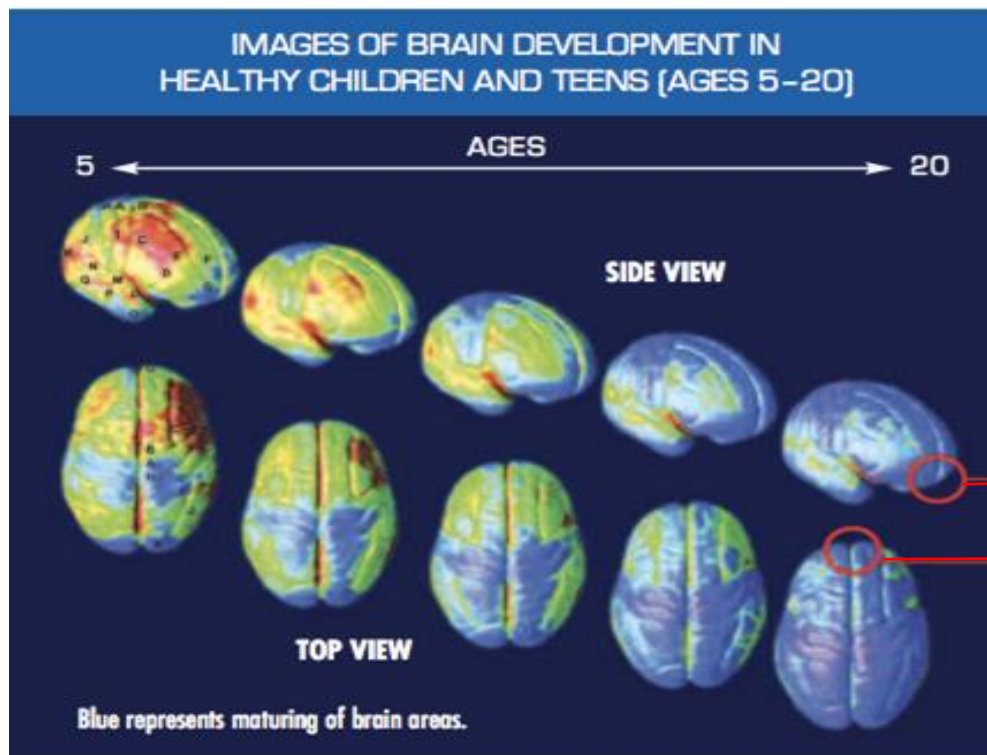
Age Matters

Research shows that 90% of people with a substance use disorder began using drugs and alcohol before the age of 18.

Key to preventing the onset of a SUD is delaying the age of first use.



Adolescent Brain Development



Source: NIDA. (2014). *Drugs, Brains, and Behavior: The Science of Addiction*.

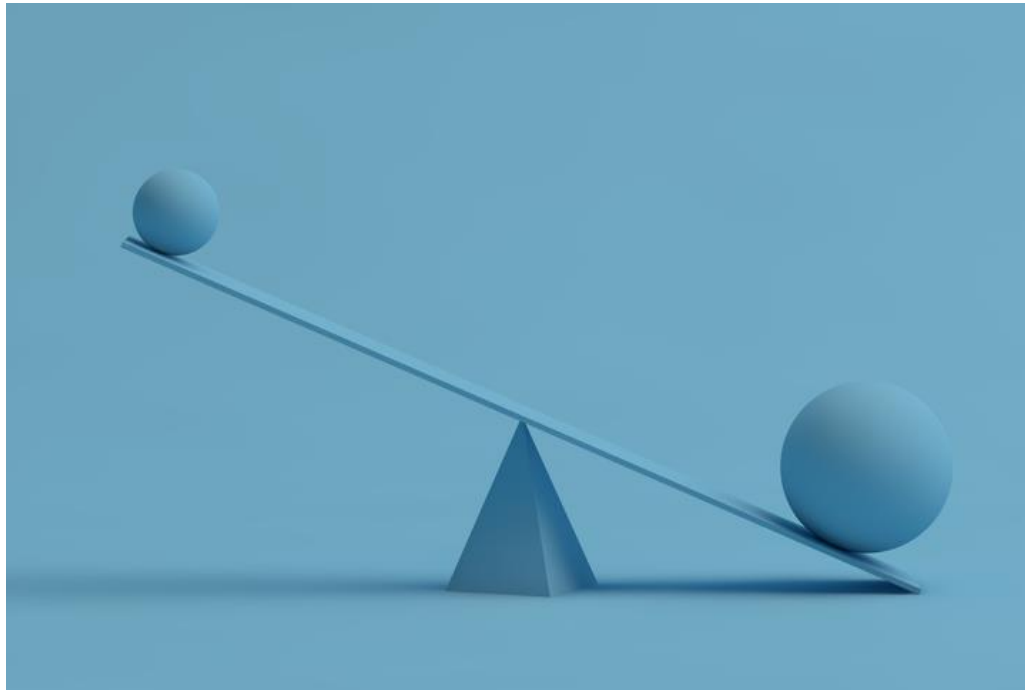
Mind Your Genes

We often hear that addiction can run in families, and it has been shown that genetics account for 50% of a person's likelihood of developing an addiction.

In this video, adolescents learn how to mind their genes to avoid developing an addiction.



Balancing Risk and Protective Factors



Understanding Risk and Protection

Risk Factors

- Genetic disposition
- Prenatal alcohol and/or drug exposure
- Parents who use drugs and/or alcohol or who suffer from mental illness
- Child abuse and maltreatment
- Inadequate supervision
- Neighborhood poverty and violence
- Norms and laws favorable to substance use
- Adverse Childhood Experiences

Protective Factors

- Parental involvement
- Health peer involvement
- Availability of faith-based resources
- After-school activities
- Policies limiting the availability of alcohol
- Attachment to community
- Pro-social engagement
- Connectedness to adults outside of family

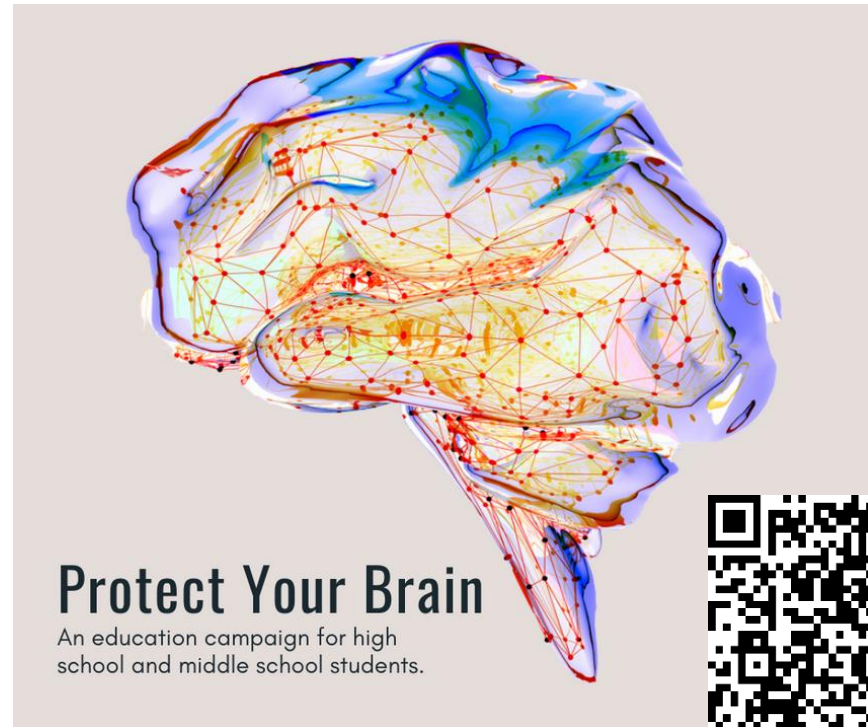


Resources



Protect Your Brain

- Awareness campaign for teens & adolescents
- Narrated by a high school student
- Reinforces the importance of “protecting your brain”
- Presents key strategies for adolescents, such as:
 - delaying first use
 - finding positive coping skills
 - taking extra precaution if substance use runs in your family



Opioid Prevention Campaign

- Public health media campaign to help prevent adolescent substance use
- Features key information about opioids and guidance for parents and teachers on how to prevent opioid misuse
- Evidence-based toolkit translates the science of addiction and provides critical prevention information on prevention
- Available in English and Spanish



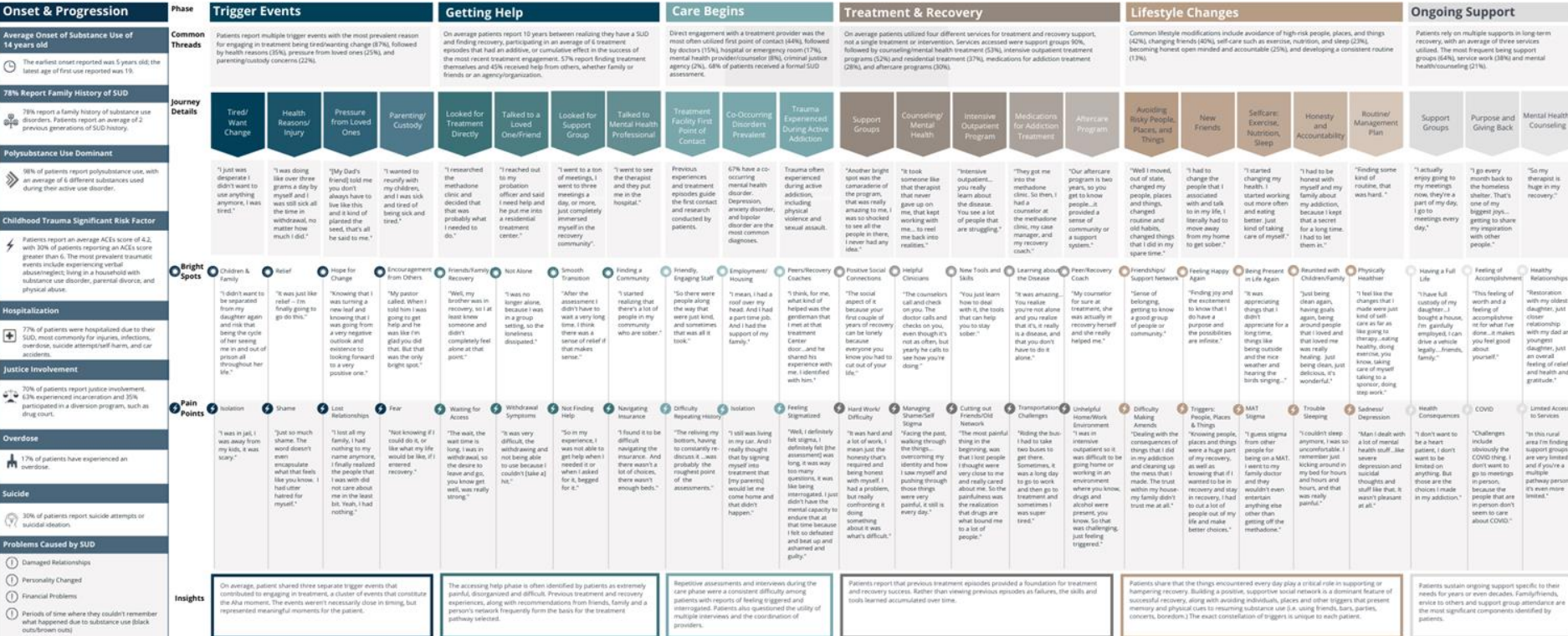
Opioid Prevention Campaign Components

- Three video PSAs:
 - 12 Things Parents Can Do to Prevent Addiction
 - 7 Things Teachers Can Do to Prevent Addiction
 - Teens & Opioids



Patient Experience Journey Map

The Addiction Policy Forum Patient Journey Map represents a common set of moments that individuals in treatment and recovery from a substance use disorder experience. While this map does not represent what happens to every individual who engages in treatment for addiction and recovery support, it highlights common elements and bright spots and pain points in accessing care and finding and maintaining long-term recovery. Quotes from patients are included to illustrate the salience of the moment. Common threads and insights are also provided, which can guide practitioners and leaders in the improvement of care and patient outcomes for individuals with a substance use disorder.



References.

Prescott, C. A., & Kendler, K. S. (1999). Genetic and environmental contributions to alcohol abuse and dependence in a population-based sample of male twins. *American Journal of Psychiatry*, 156, 34-40. 53.

Schuckit, M. A., Edenberg, H. J., Kalmijn, J., Flury, L., Smith, T. L., Reich, T., . . . Foroud, T. (2001). A genome-wide search for genes that relate to a low level of response to alcohol. *Alcoholism: Clinical and Experimental Research*, 25(3), 323-329.

NIDA (2012). *Principles of Drug Addiction Treatment: A Research-Based Guide (Third Edition)*. Retrieved March 31, 2017, from <https://www.drugabuse.gov/publications/principles-drug-addiction-treatment-research-based-guide-third-edition>

NIDA (2014). *Drugs, Brains, and Behavior: The Science of Addiction*. Retrieved March 31, 2017, from <https://www.drugabuse.gov/publications/drugs-brains-behavior-science-addiction>

NIDA (2014). *Lessons from Prevention Research*. Retrieved March 31, 2017, from <https://www.drugabuse.gov/publications/drugfacts/lessons-prevention-research>

ASAM Criteria: Treatment Criteria for Addictive, Substance-Related, and Co-Occurring Conditions. Publication Date: October 24, 2013
American Psychiatric Association. (2013). *Diagnostic and statistical manual of mental disorders (5th ed.)*. Washington, DC.

NIDA (6753). *Addiction Science and Clinical Practice: Volume 6, Number 1*. Retrieved March 31, 2017, from <https://www.drugabuse.gov/publications/addiction-science-clinical-practice/addiction-science-clinical-practice-volume-6-number-1>

NIDA (2016). *Genetics and Epigenetics of Addiction*. Retrieved March 31, 2017, from <https://www.drugabuse.gov/publications/drugfacts/genetics-epigenetics-addiction>

NIDA (2016). *Understanding Drug Use and Addiction*. Retrieved March 31, 2017, from <https://www.drugabuse.gov/publications/drugfacts/understanding-drug-use-addiction>

Hedegaard H, Warner M, Miniño AM. Drug overdose deaths in the United States, 1999–2016. *NCHS Data Brief*, no 294. Hyattsville, MD: National Center for Health Statistics. 2017. Retrieved from: <https://www.cdc.gov/nchs/data/databriefs/db294.pdf>

Robert Wood Johnson Foundation. *The Truth About ACEs*. Retrieved October 30, 2019, from <https://www.rwjf.org/en/library/infographics/the-truth-about-aces.html>



THANK YOU!

ADDICTION POLICY FORUM

jhulsey@addictionpolicy.org



[@addictionpolicy](https://www.facebook.com/addictionpolicy)

www.addictionpolicy.org



Contact Us



Central East (HHS Region 3)

PTTC

Prevention Technology Transfer Center Network

Funded by Substance Abuse and Mental Health Services Administration

a program managed by



THE DANYA INSTITUTE

Central East PTTC website:
www.pttcnetwork.org/centraleast

Danya Institute website:
www.danyainstitute.org

Deborah Nixon-Hughes, Director:
dhughes@danyainstitute.org

Danya Institute email and phone:
info@danyainstitute.org
(240) 645-1145

Funding for this presentation was made possible by SAMHSA grant no. 1H79SP081018. The views expressed by speakers and moderators do not necessarily reflect the official policies of HHS; nor does mention of trade names, commercial practices, or organizations imply endorsement by the U.S. Government.



Central East (HHS Region 3)

PTTC