



# From Cleaning to Mapping in Tableau Public

Beverly Triana-Tremain, PhD, CLSSGB

April 13, 2023



South Southwest (HHS Region 6)

**PTTC**

Prevention Technology Transfer Center Network  
Funded by Substance Abuse and Mental Health Services Administration

# Acknowledgement

This presentation was prepared for the South Southwest Prevention Technology Transfer Center (PTTC) Network under a cooperative agreement from the Substance Abuse and Mental Health Services Administration (SAMHSA). All material appearing in this publication, except that taken directly from copyrighted sources, is in the public domain and may be reproduced or copied without permission from SAMHSA or the authors. Citation of the source is appreciated. Do not reproduce or distribute this publication for a fee without specific, written authorization from the South Southwest Prevention Technology Transfer Center. For more information on obtaining copies of this publication, contact us at [pttc6@ou.edu](mailto:pttc6@ou.edu).

At the time of this publication, Miriam E. Delphin-Rittmon, Ph.D, served as Assistant Secretary for Mental Health and Substance Use in the U.S. Department of Health and Human Services and the Administrator of the Substance Abuse and Mental Health Services Administration.

The opinions expressed herein are the view of PTTC Network and do not reflect the official position of the Department of Health and Human Services (DHHS), SAMHSA. No official support or endorsement of DHHS, SAMHSA, for the opinions described in this document is intended or should be inferred.

This work is supported by grants 6UR1TI08205-02M002, SM081726 and 1H79SP081006-01 from the Department of Health and Human Services, Substance Abuse and Mental Health Services Administration.



South Southwest (HHS Region 6)

PTTC

Prevention Technology Transfer Center Network  
Funded by Substance Abuse and Mental Health Services Administration

# Learning Objectives



Apply the principles of data cleaning to an exported Excel® file



Explain the concept of percentiles in data visualization



Generate a map using Tableau Public



South Southwest (HHS Region 6)

PTTC

Prevention Technology Transfer Center Network  
Funded by Substance Abuse and Mental Health Services Administration

# South Southwest PTTC Support Team

## The Team



**Wanda Hudson**  
Product Development  
and Distance Learning  
Coordinator



**Richard C. Feinberg**  
Media Specialist



**Nicole Schoenborn**  
Evaluator



**Sheila Boswell**  
Assistant Evaluator

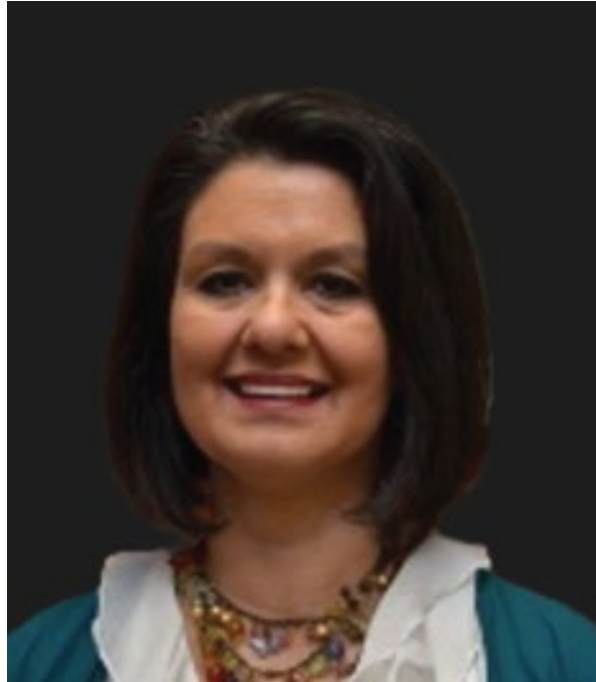


South Southwest (HHS Region 6)

**PTTC**

Prevention Technology Transfer Center Network  
Funded by Substance Abuse and Mental Health Services Administration

# Today's Presenter



Beverly Triana-Tremain, Ph.D.  
SSW PTTC Epidemiologist



South Southwest (HHS Region 6)

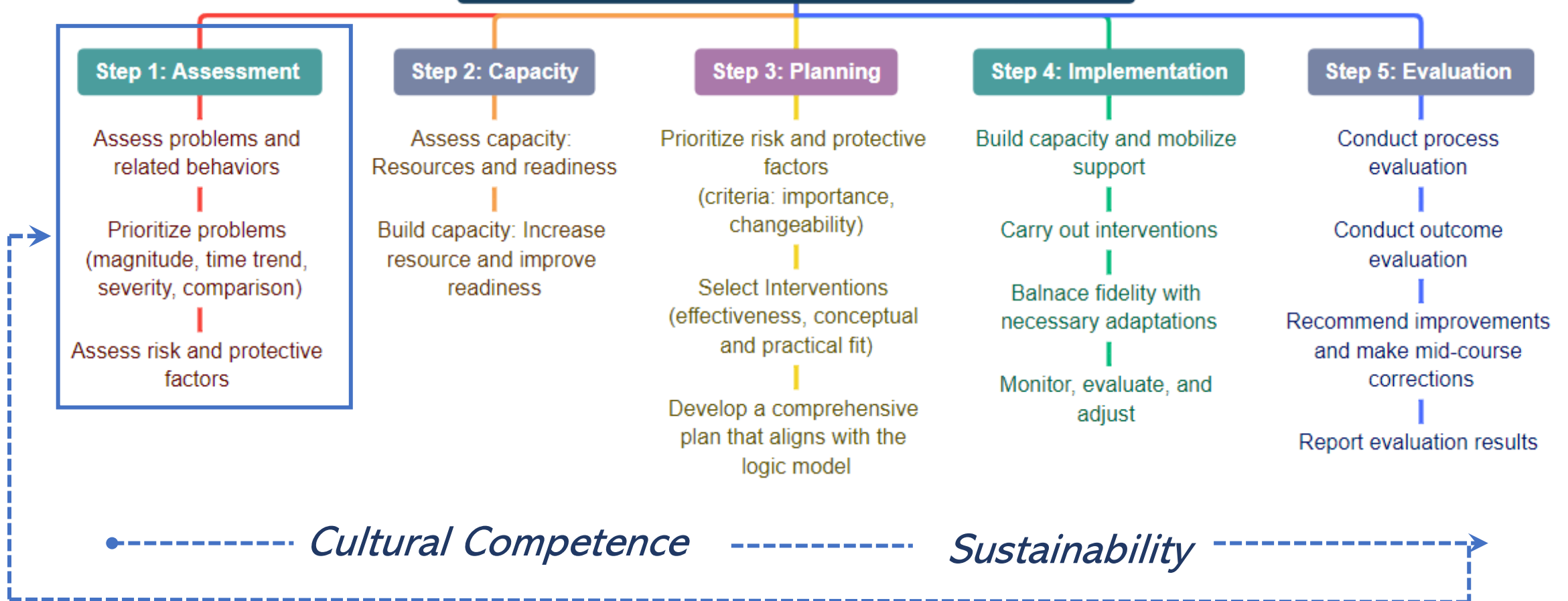
**PTTC**

Prevention Technology Transfer Center Network  
Funded by Substance Abuse and Mental Health Services Administration

# Related IC&RC Applied Prevention Specialist Competencies



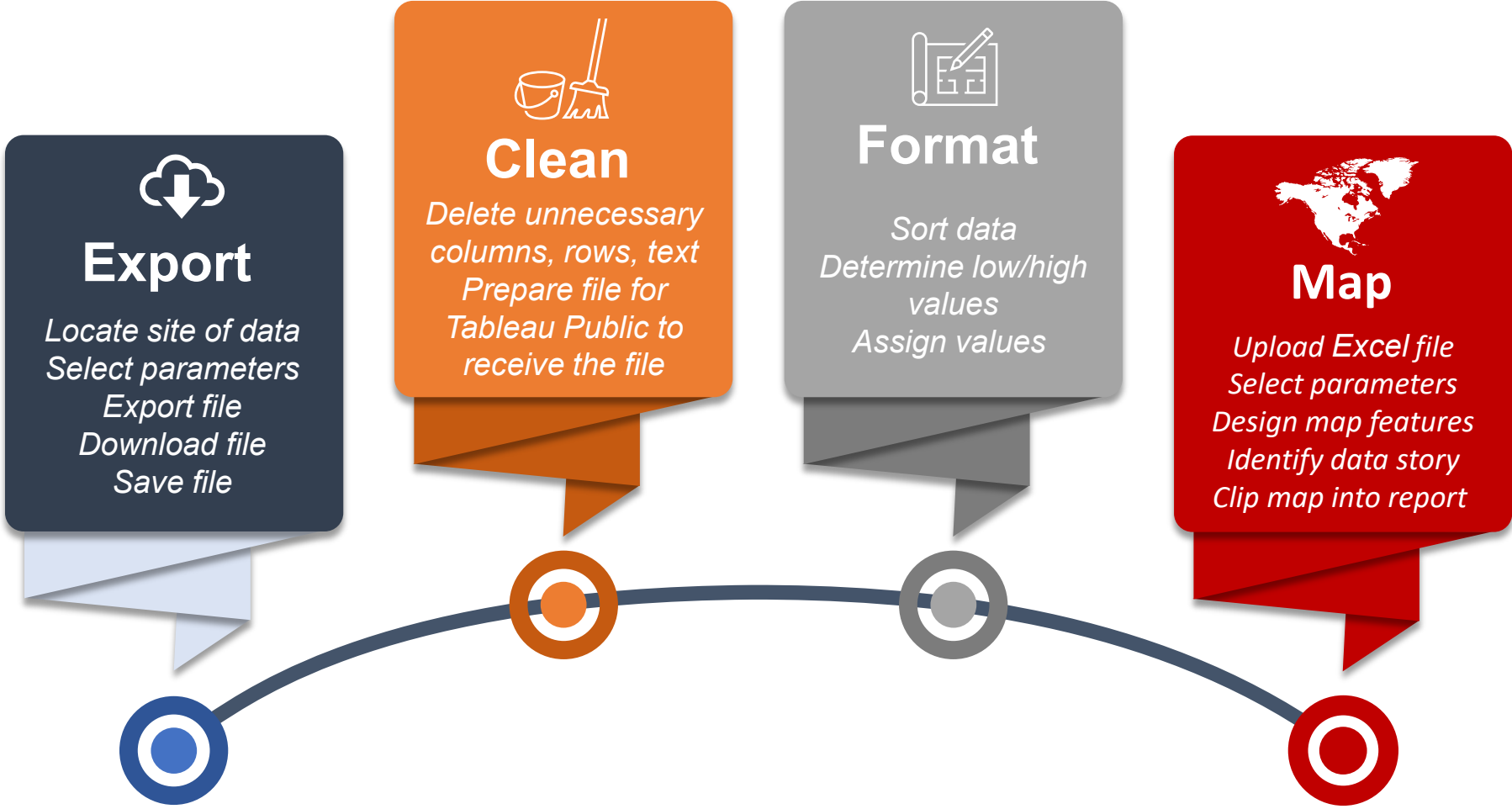
# Strategic Prevention Framework (SPF) Steps







# Our Roadmap



South Southwest (HHS Region 6)

**PTTC** Prevention Technology Transfer Center Network  
Funded by Substance Abuse and Mental Health Services Administration



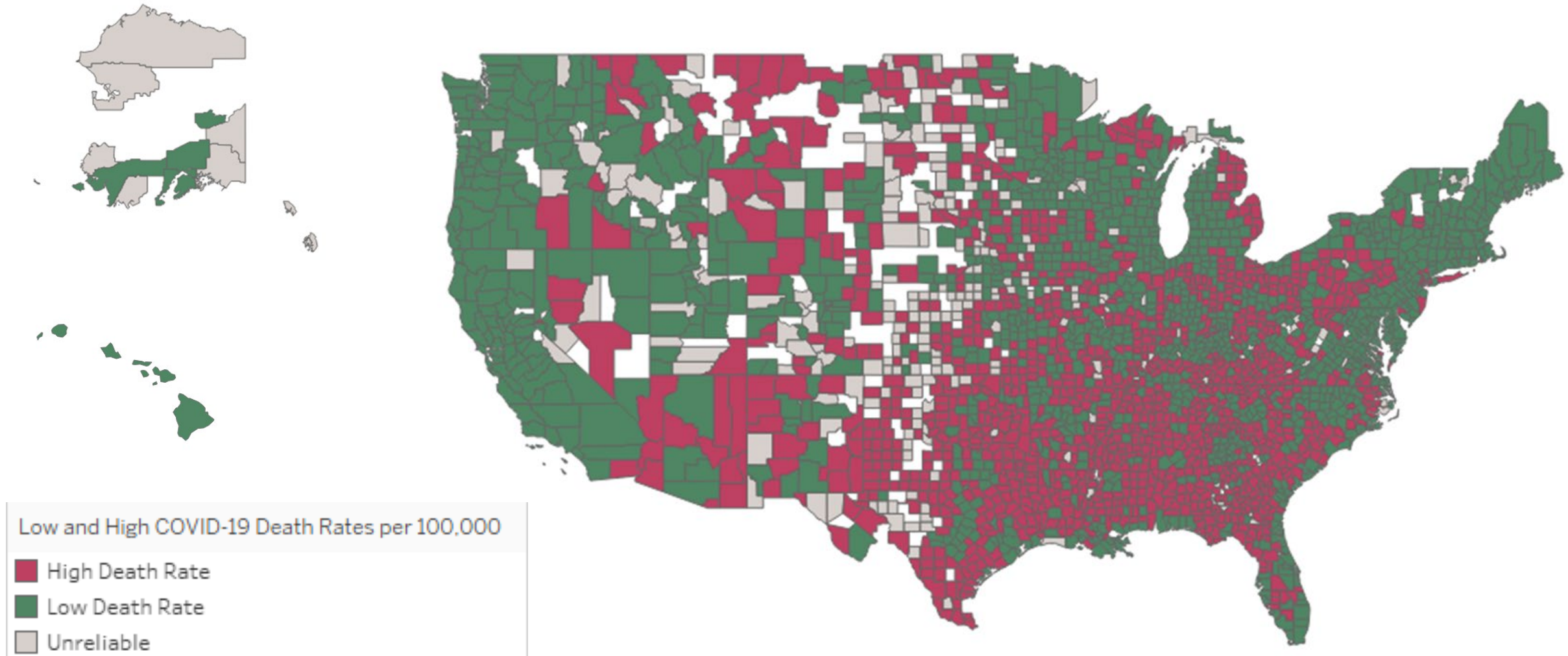
# Let's Map!



South Southwest (HHS Region 6)

**PTTC** Prevention Technology Transfer Center Network  
Funded by Substance Abuse and Mental Health Services Administration

# COVID-19 Rates High in Center of Country (2019 to 2021)



How would you compare your feelings about data visualization?

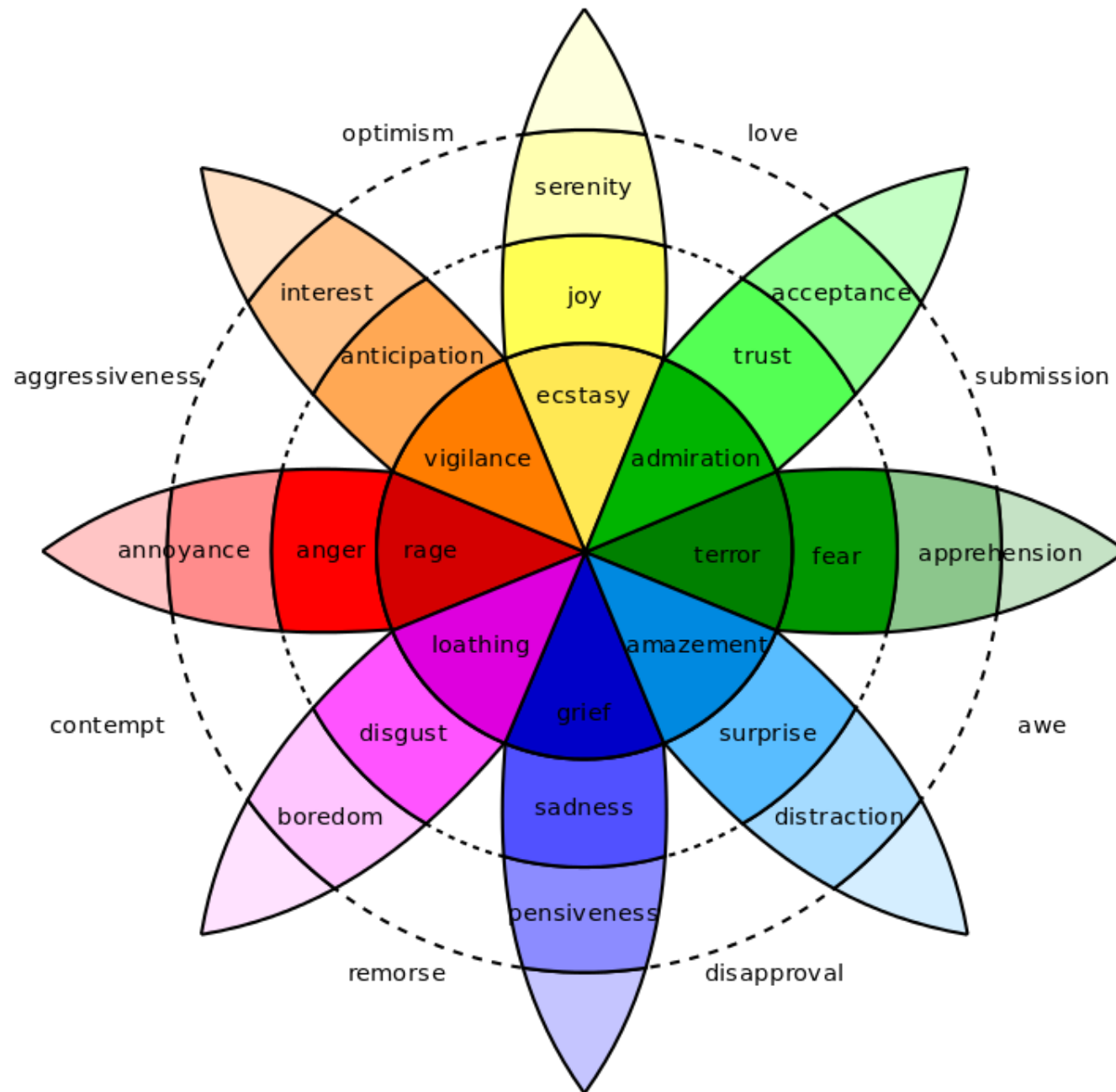
*Example  
“intimidated-  
excited”*

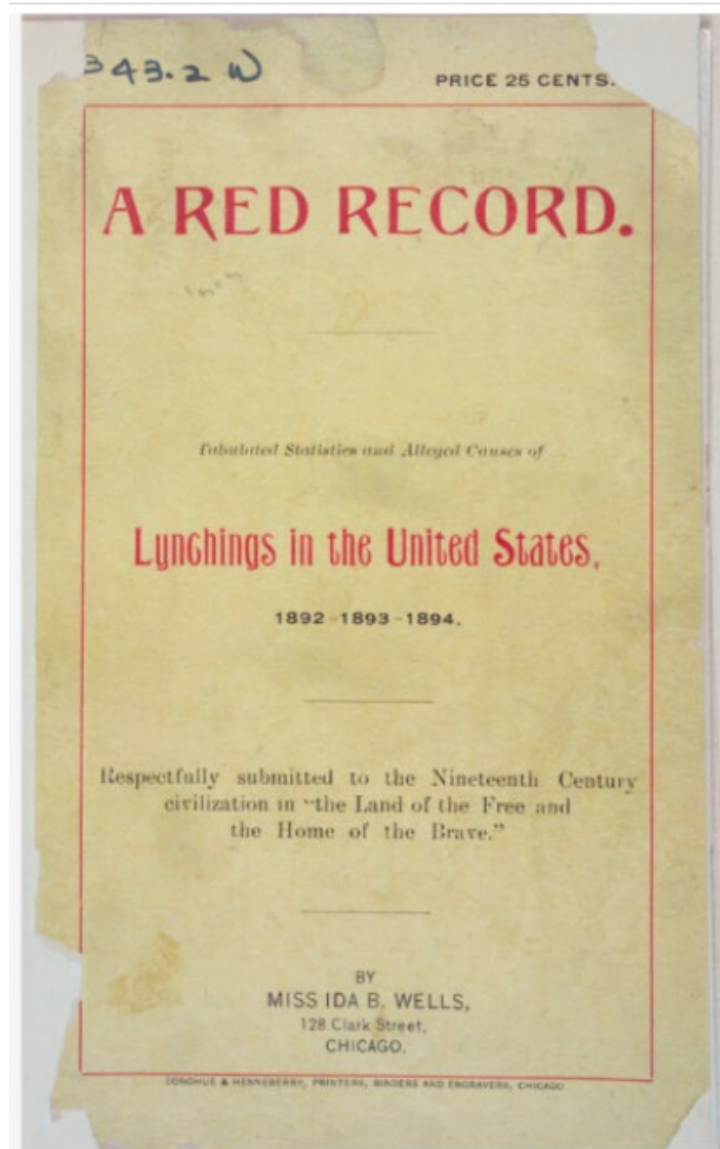


South Southwest (HHS Region 6)

PTTC

Prevention Technology Transfer Center Network  
Funded by Substance Abuse and Mental Health Services Administration





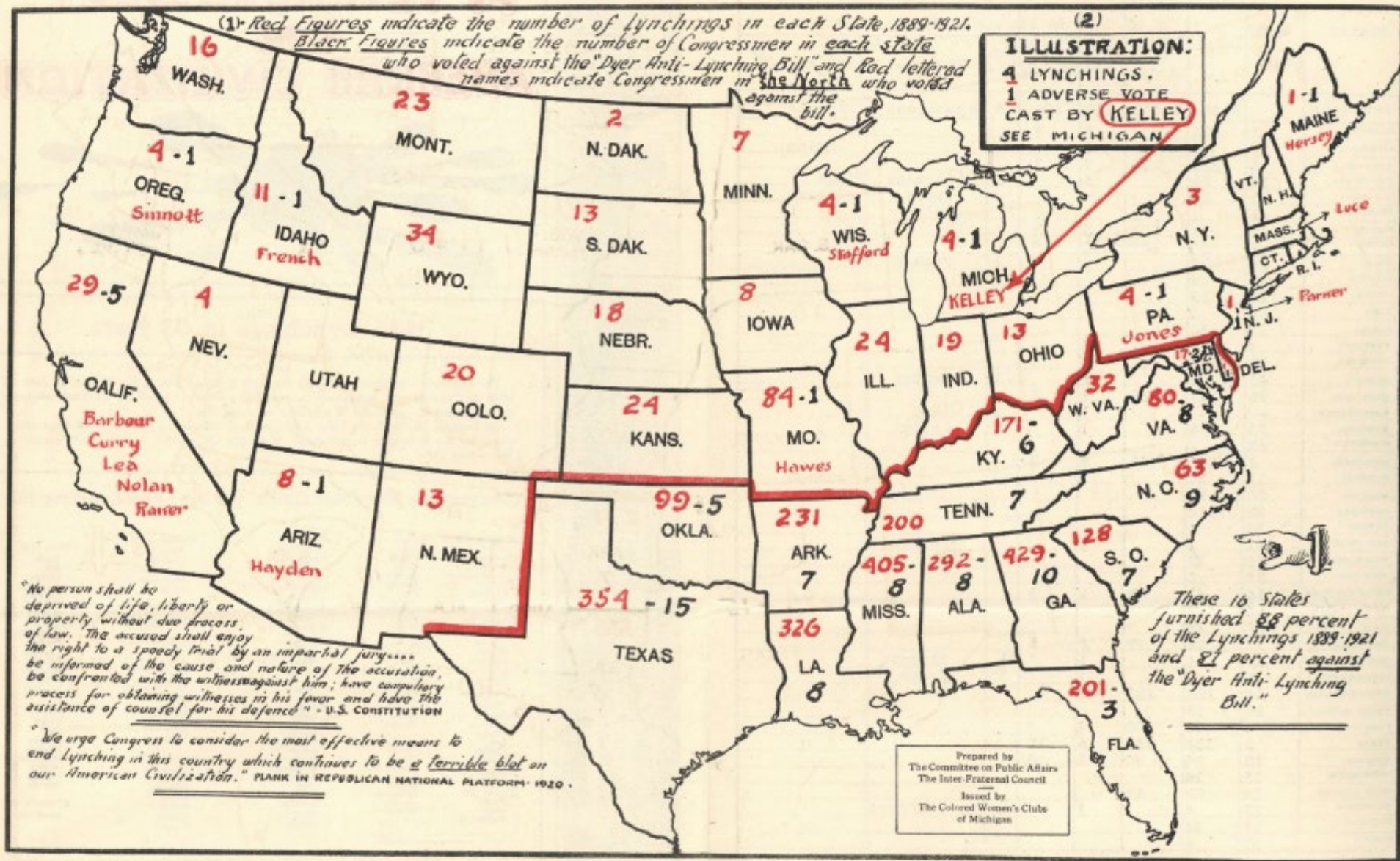
Barnett-Wells (1895)

*The way to right wrongs is to turn the light of truth upon them.*



Ida B. Wells-Barnett (1862-1961)  
Investigative Journalist/Demographer  
2020 Pulitzer Prize Winner

THE RED RECORD OF LYNCHING - 1889 TO 1921 - GEOGRAPHICALLY DISTRIBUTED.  
( 3424 IN 33 YEARS )



# Resources

Rhode Island Prevention Research Center. (2015). Rhode Island prevention specialist certification: Study guide for the certification exam.

<https://internationalcredentialing.org/resources/Documents/PreventionCertificationStudyGuide.pdf>

South Southwest PTTC. (2023, January 26). *Let's get credentialed in 2023 – New resources* [online article]. <https://pttcnetwork.org/centers/south-southwest-pttc/news/lets-get-credentialed-2023-new-resources>

South Southwest PTTC. (2022, December 22). *Increasing organizational capacity by hiring prevention certified professionals*. <https://pttcnetwork.org/centers/south-southwest-pttc/product/south-southwest-pttc-newsletter-december-2022-increasing>



South Southwest (HHS Region 6)

PTTC

Prevention Technology Transfer Center Network  
Funded by Substance Abuse and Mental Health Services Administration

# References

Barnett-Wells, I. (1895). *A red record. Tabulated statistics and alleged causes of lynchings in the United States, 1892-1893-1894*. Schomburg Center for Research in Black Culture.

California Department of Social Services. (2022). *Emotional wellness*.  
<https://www.cdss.ca.gov/inforesources/foster-care/emotional-wellness>

IC&RC. (2022). *Candidate guide for the IC&RC prevention specialist examination*. [https://www.internationalcredentialing.org/resources/Candidate%20Guides/Prevention\\_Candidate\\_Guide\\_Final\\_.pdf](https://www.internationalcredentialing.org/resources/Candidate%20Guides/Prevention_Candidate_Guide_Final_.pdf)

Substance Abuse and Mental Health Services Administration. (2019). *A guide to SAMHSA's strategic prevention framework*. Center for Substance Abuse Prevention.  
<https://www.samhsa.gov/sites/default/files/20190620-samhsa-strategic-prevention-framework-guide.pdf>



South Southwest (HHS Region 6)

PTTC

Prevention Technology Transfer Center Network  
Funded by Substance Abuse and Mental Health Services Administration





Let's hear from you!  
What are your questions?



South Southwest (HHS Region 6)

**PTTC**

Prevention Technology Transfer Center Network  
Funded by Substance Abuse and Mental Health Services Administration

For further questions, contact:

Beverly Triana-Tremain,  
Epidemiologist

South Southwest PTTC Region 6

[btremain@ou.edu](mailto:btremain@ou.edu)

405-203-8516

Connect with us @



[SSW PTTC website](#)



[Join our mailing list](#)



[Products and resources](#)

