



Pacific Southwest (HHS Region 9)

PTTC

Prevention Technology Transfer Center Network

Funded by Substance Abuse and Mental Health Services Administration

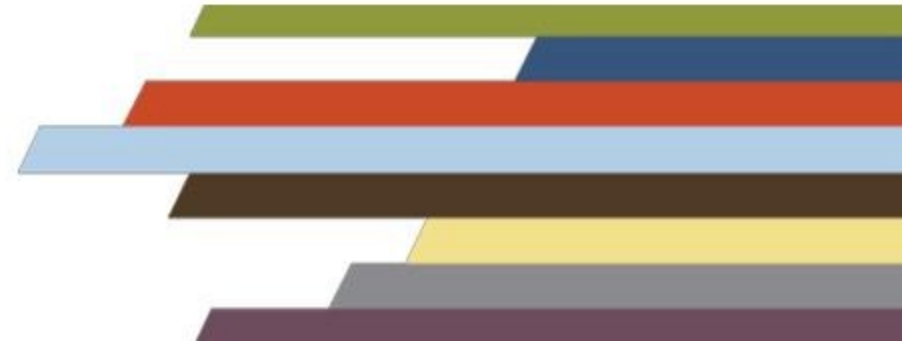


Prevention with Purpose: The Importance of Strategic Planning in Preventing Drug Misuse Among College Students

Rich Lucey

Erin Ficker, MPAff, CPRS

Peggy Glider, PhD.



Disclaimer

This presentation is supported by SAMHSA of the U.S. Department of Health and Human Services (HHS) through SAMHSA Cooperative Agreement #H79SP081015-01. The contents are those of the author(s) and do not necessarily represent the official views of, nor an endorsement, by SAMHSA/HHS, or the U.S. Government.

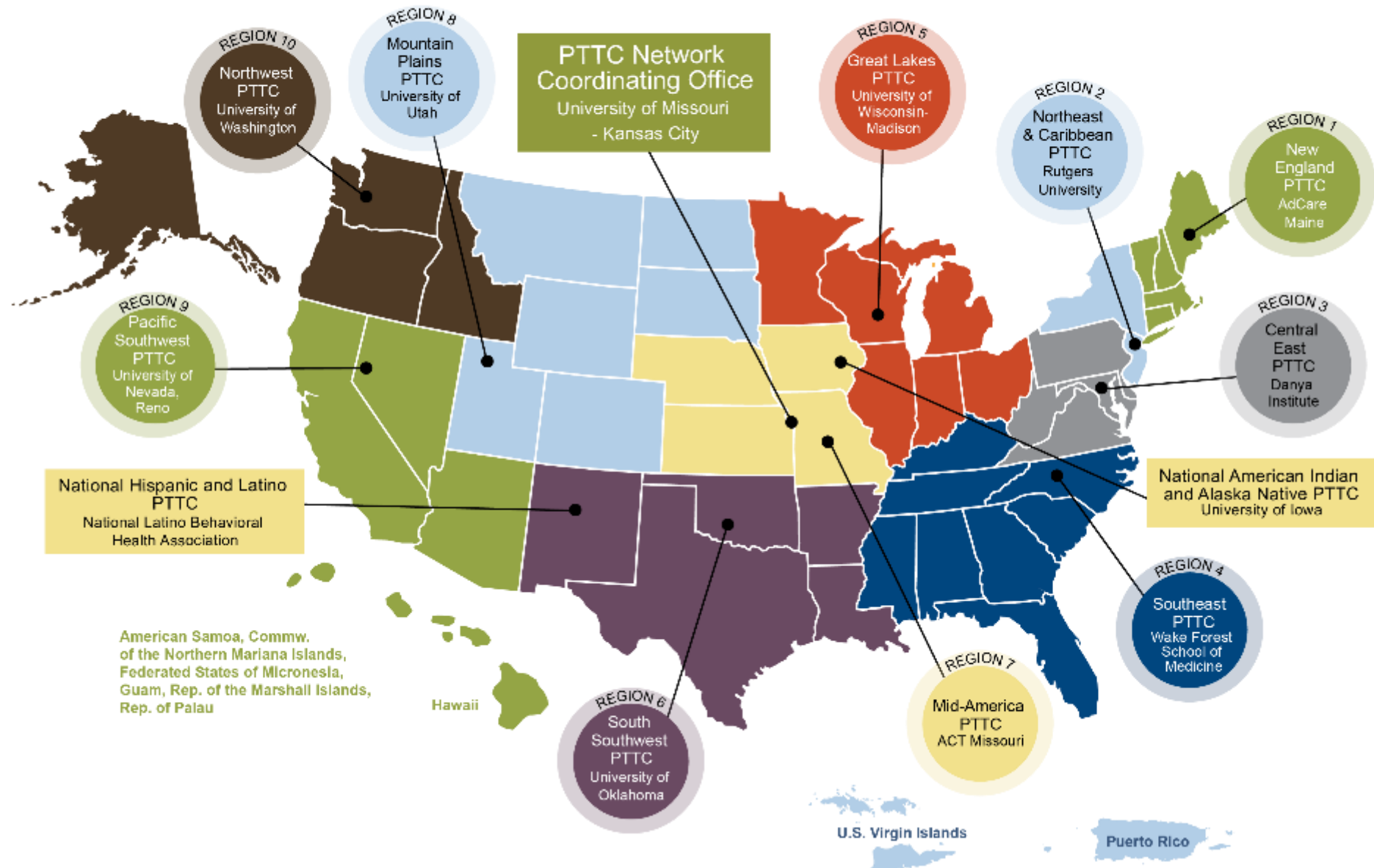
This webinar is being recorded and archived and will be available for viewing after the webinar. Please contact the webinar facilitator if you have any concerns or questions.



PTTC

Prevention Technology Transfer Center Network
Funded by Substance Abuse and Mental Health Services Administration

PTTC Network



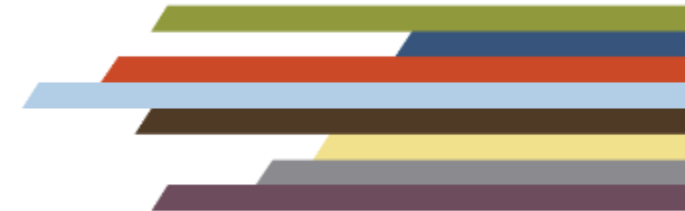
Purpose of the TTCs

1

Develop and strengthen the **workforces** that provide substance use disorder and mental health disorder prevention, treatment, and recovery support services.

2

Help people and organizations incorporate **effective practices** into substance use and mental health disorder prevention, treatment and recovery services.



PTTC Network Approach

The PTTCs...

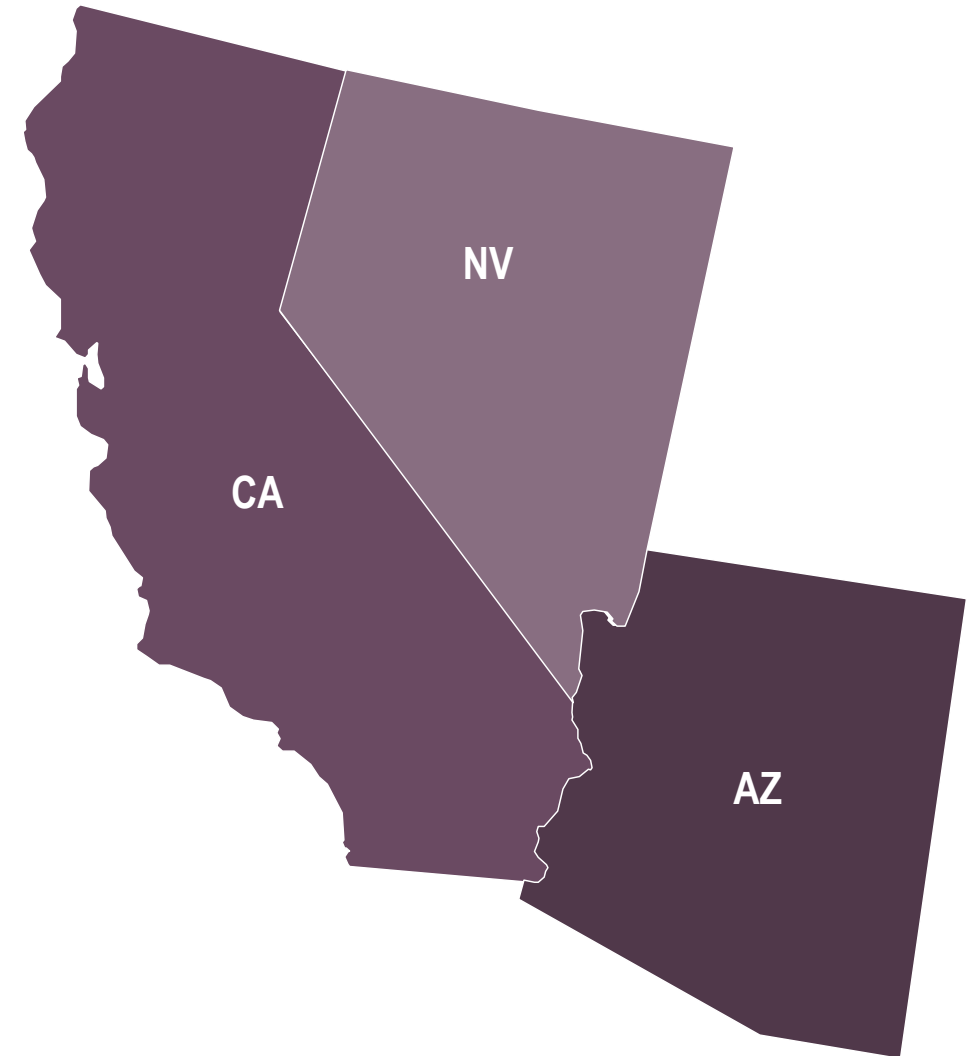
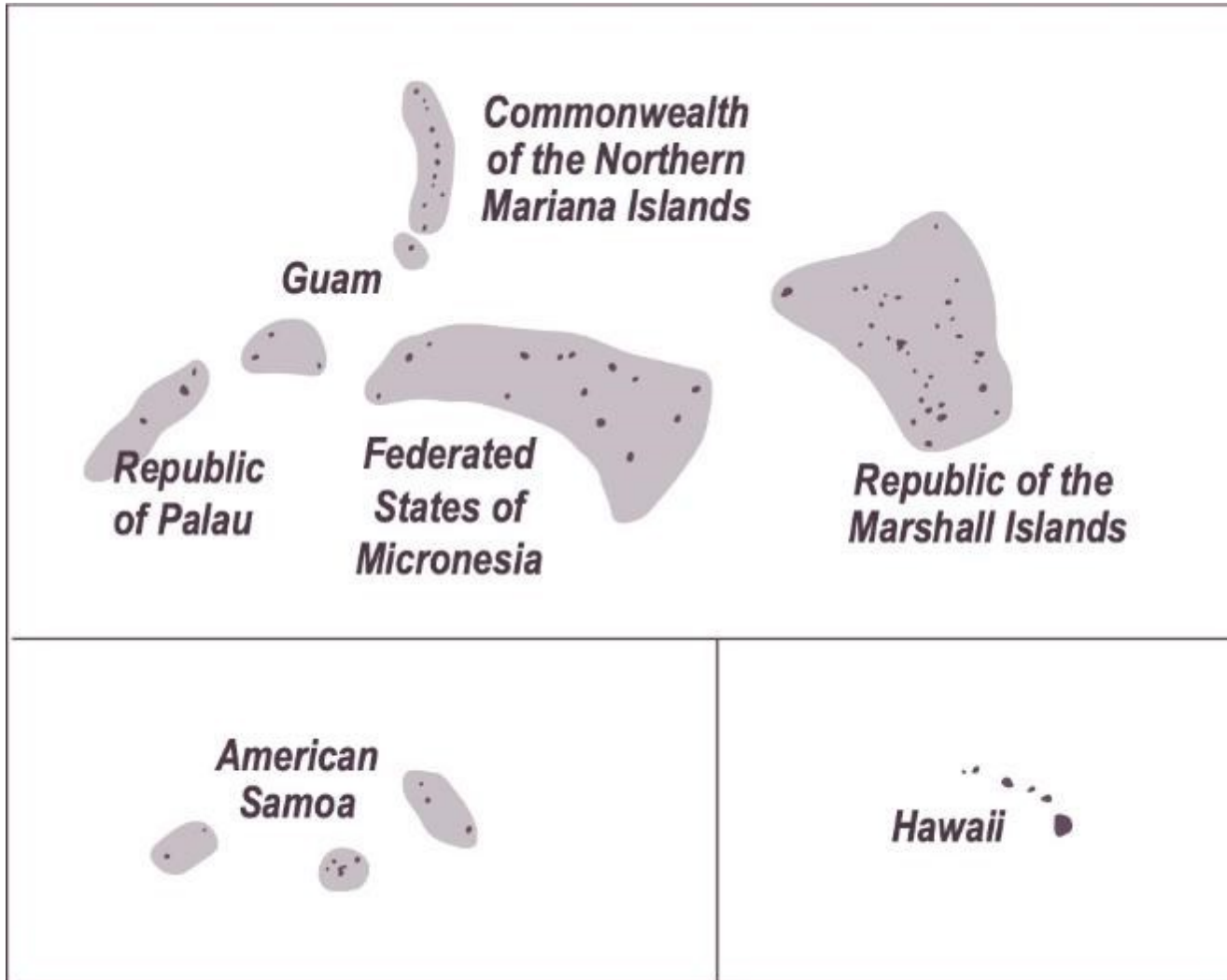
Develop and disseminate tools and strategies needed to improve the quality of substance abuse prevention efforts

Provide training and resources to prevention professionals to improve their understanding of

- prevention science,
- how to use epidemiological data to guide prevention planning, and
- selection and implementation of evidence-based and promising prevention practices.

Develop tools and resources to engage the next generation of prevention professionals

Pacific Southwest





Land acknowledgement

We acknowledge that the University of Nevada, Reno is situated on the traditional homelands of the Numu (Northern Paiute), Wašiw (Washoe), Newe (Western Shoshone), Nuwu (Southern Paiute) peoples. These lands continue to be a gathering place for Indigenous Peoples and we recognize their deep connections to these places. We extend our appreciation for the opportunity to live and learn on their territory.

Housekeeping

- Webinar recording and materials
- Certificates of attendance





Mark your calendar...

Office Hours

Every 3rd Thursday

11:00 am and 3:00 pm Pacific



DEA

Prevention with Purpose: The Importance of Strategic Planning in Preventing Drug Misuse Among College Students

Rich Lucey

Senior Prevention Program Manager
Drug Enforcement Administration

Erin Ficker

Project Director
Education Development Center

Pacific Southwest PTTC Webinar
January 23, 2024



Agenda

- Drug Use Rates Among College Students (Rich)
- The Dangers of Fake Pills and Illicit Fentanyl (Rich)
- DEA's Updated Strategic Planning Guide – Purpose and Development (Rich, Erin)
- Successes and Challenges (Erin)
 - SPF Profiles in Action
 - Prevention Success During Times of Disruption
- Prevention Resources for Colleges and Universities (Rich, Erin)



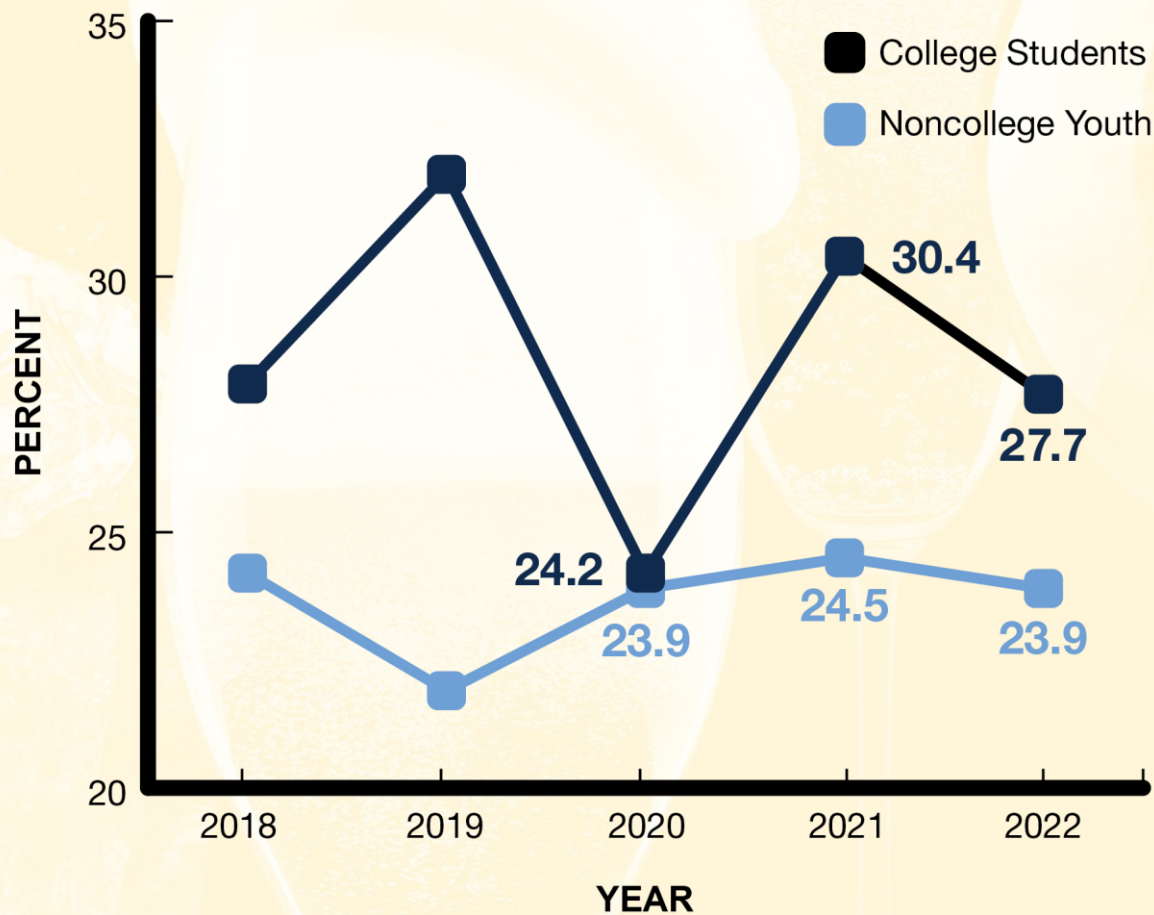
DEA



alcohol

Alcohol and Drug Use Rates Among College Students

Trends in 2-Week Prevalence of Having 5 or More Drinks in a Row among College Students vs. Noncollege Youth 1 to 4 Years beyond High School



Source:
2022 Monitoring the Future Study



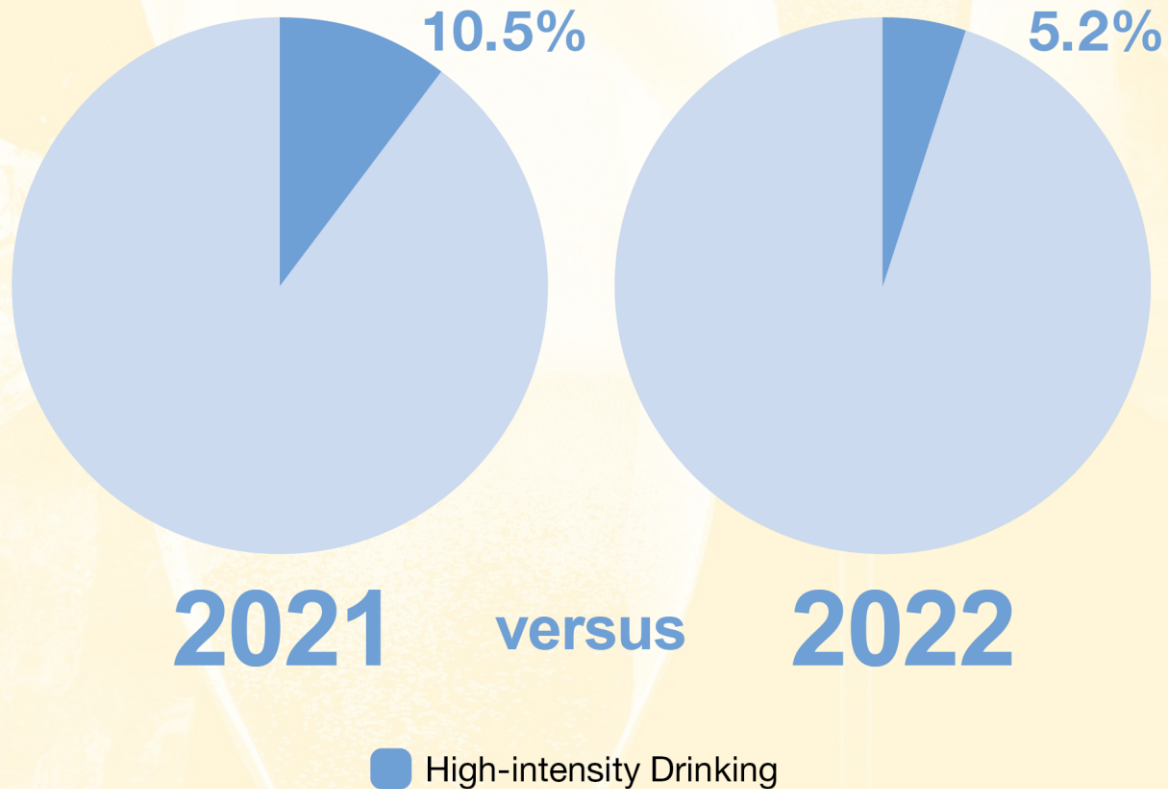


DEA



alcohol

2-Week Prevalence of Having 10 or More Drinks in a Row among College Students, 2021 vs. 2022



Alcohol and Drug Use Rates Among College Students



Source:
2022 Monitoring the Future Study



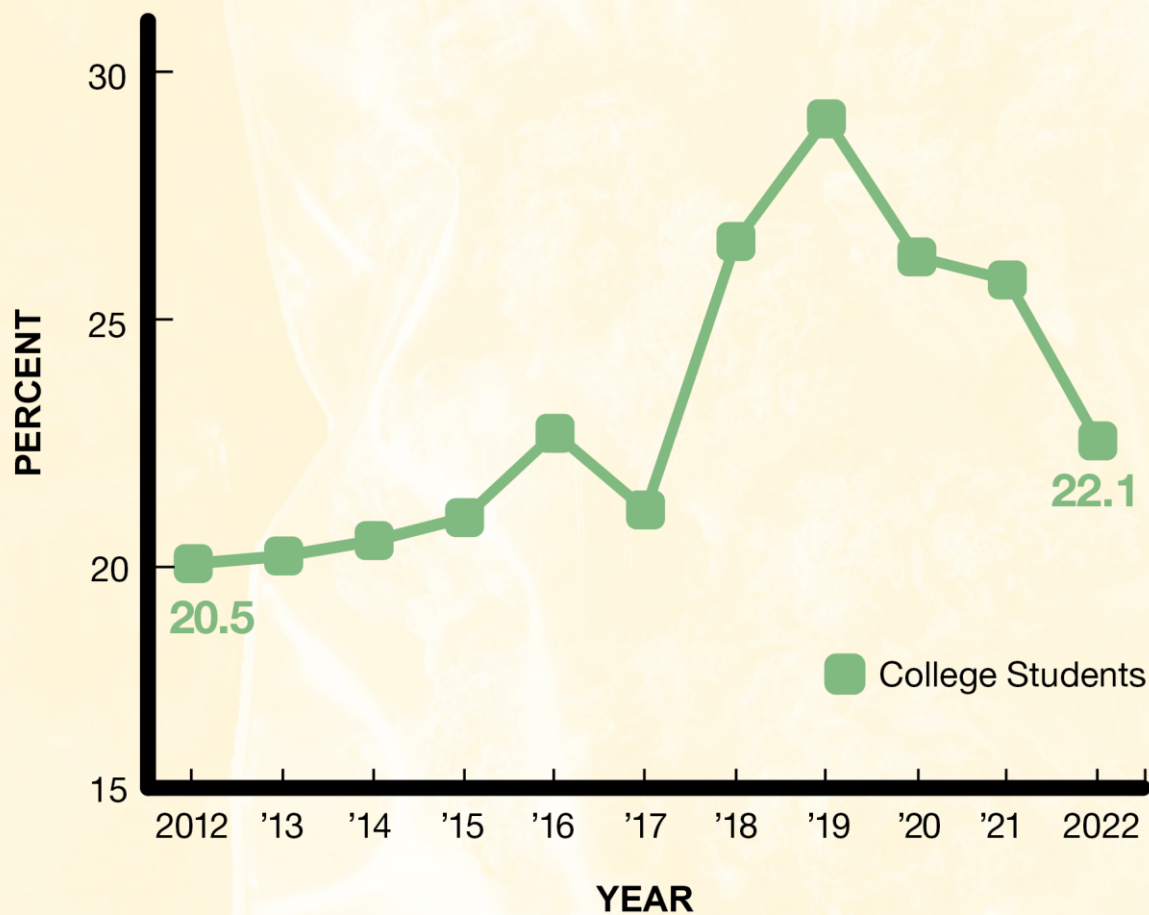
DEA

marijuana



Alcohol and Drug Use Rates Among College Students

Trends in 30-Day Prevalence of Marijuana Usage among College Students



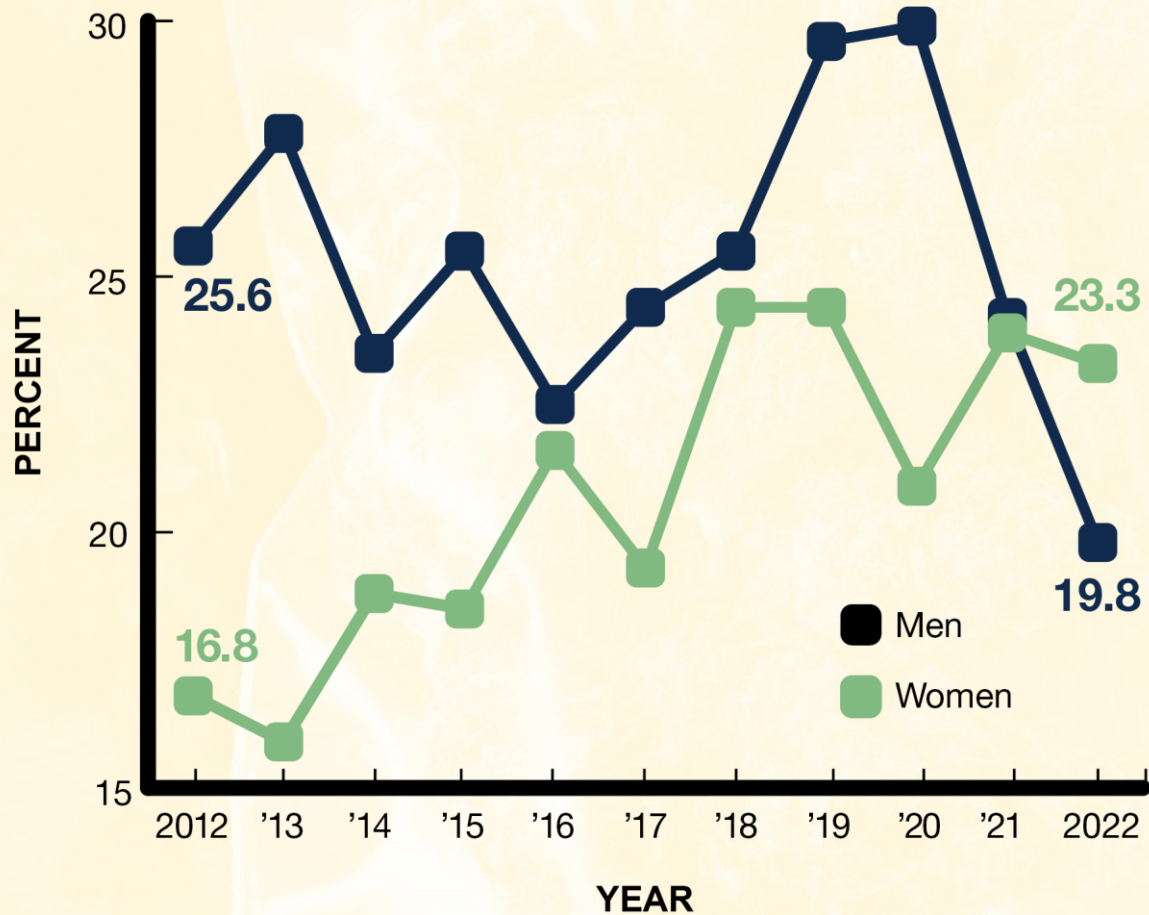
Source:
2022 Monitoring the Future Study



DEA

marijuana

Trends in 30-Day Prevalence of Marijuana Usage among College Students 1 to 4 Years beyond High School, by Gender



Alcohol and Drug Use Rates Among College Students



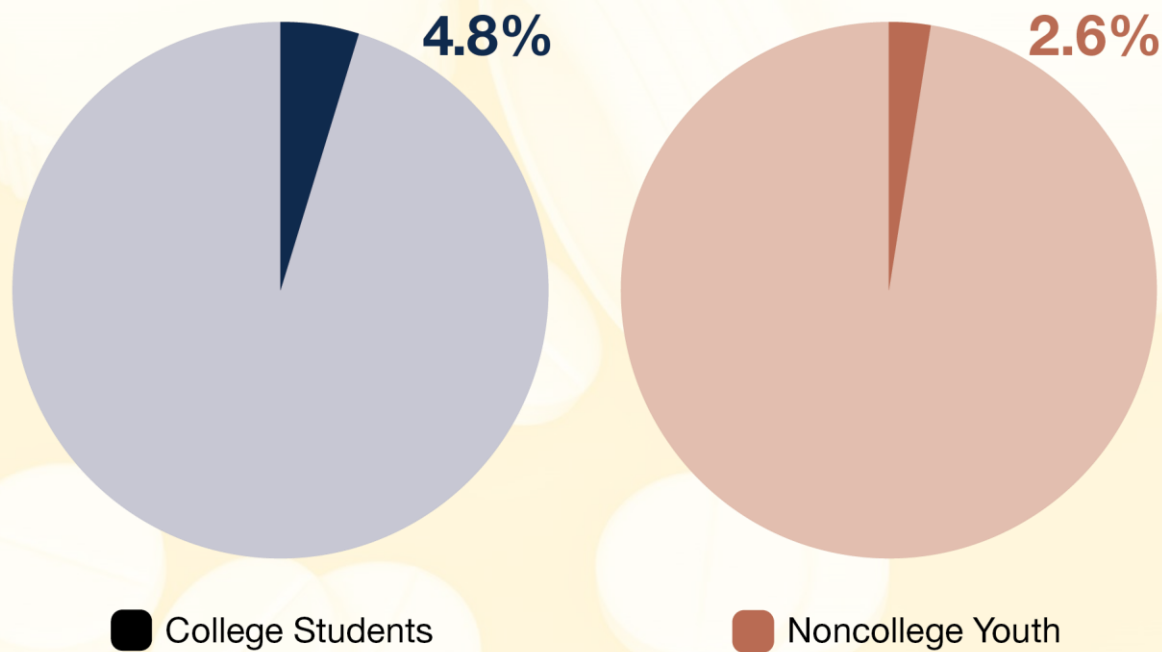
Source:
2022 Monitoring the Future Study



DEA

stimulants

12-Month Prevalence of Nonprescription Amphetamine Use among College Students vs. Noncollege Youth, 2022



Alcohol and Drug Use Rates Among College Students



Source:
2022 Monitoring the Future Study



Mental Health of College Students



Anytime within the past 30 days:

- 35.1% felt things were hopeless*
- 27.3% felt so sad nothing could cheer them up*
- 24.7% felt worthless*

* Some, Most, All of the Time

Within the past 12 months:

- 34.4% felt anxiety affected academic performance

Suicide:

- 3.0% likely to attempt suicide someday
- 2.3% attempted suicide within the last 12 months





DEA

The drug overdose crisis is a clear and present **public safety, public health, and national security threat.**

**ONE
PILL CAN
KILL**



DEA

Overdose Deaths



> 110,000

**Drug overdose deaths over
the last year**

Approximately **2/3** involved
synthetic opioids, primarily fentanyl

Approximately **1/3** involved
psychostimulants, primarily
methamphetamine

**ONE
PILL CAN
KILL**

Source: Centers for Disease Control and Prevention

Potentially Lethal
Dose of Fentanyl



**ONE
PILL CAN
KILL**

DEA



DEA



PUBLIC SAFETY ALERT

**ONE
PILL CAN
KILL**

LETHAL DOSES OF FENTANYL FOUND IN FAKE PILLS

DEA reports a **dramatic rise in the number of fake pills containing at least 2mg of fentanyl** – what is considered a lethal dose

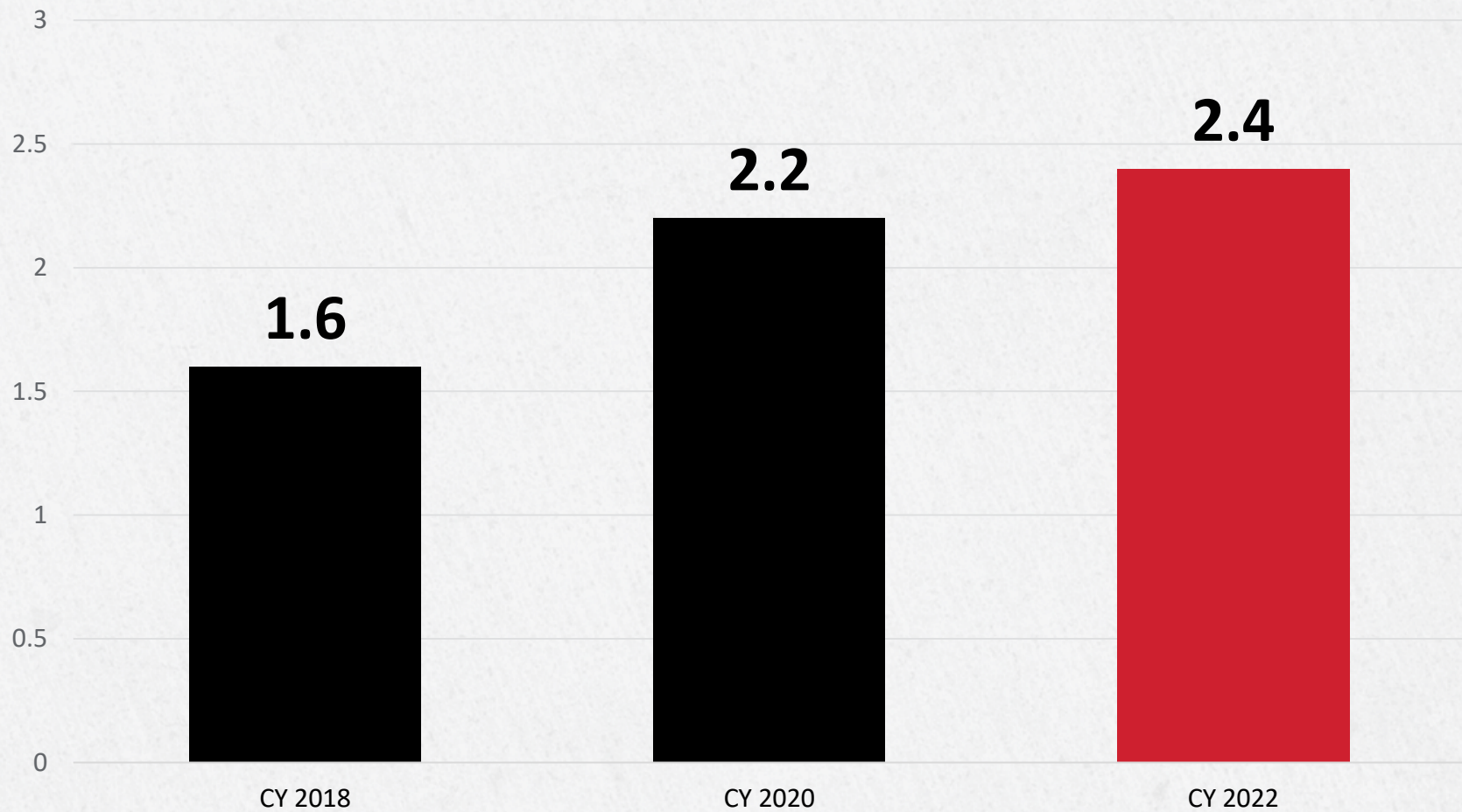


Today **7 out of ten DEA-tested pills** with fentanyl contain a potentially lethal dose.



DEA

Average Fentanyl Dose in Tablets (mg/tablet) CY 2018–CY 2022



**ONE
PILL CAN
KILL**

Source: DEA Advanced Information on Drugs Dashboard, November 2022

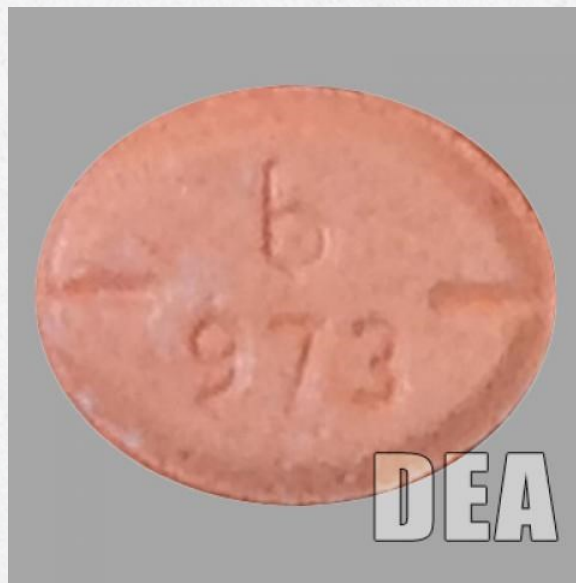


DEA

Most Common Fake Pills



Oxycontin®



Adderall®



Xanax®

**ONE
PILL CAN
KILL**



DEA

Authentic Oxycodone



Fake Oxycodone



**ONE
PILL CAN
KILL**



DEA

Authentic Xanax

Fake Xanax



**ONE
PILL CAN
KILL**



DEA



Fake Rx Pills are easily accessible

often sold on social media & e-commerce platforms

Additional Threat: Access

Fake Rx pills are easily accessible & often sold on social media & e-commerce platforms; available to anyone with a smartphone.

**ONE
PILL CAN
KILL**



DEA

Popular Emoji Drug Codes

| Oxycodone



| Xanax®



| Percocet®



| Adderall®



Additional Threat: Access

Monitoring for suspicious text messages on social media or cash app posts could spark an important, and potentially life-saving, conversation.

~~ONE
PILL CAN
KILL~~



DEA

One Pill Can Kill – Awareness Campaign



**DEA's Message to the Public:
Know the dangers and accessibility
of deadly drugs online.**

- Never take medicine that wasn't prescribed to you by your own doctor.
- Talk to your family and friends about the danger of buying drugs online.
- Spread the word that One Pill Can Kill.

www.dea.gov/onepill



DEA

**ONE
PILL CAN
KILL**

Promoting One Pill Can Kill on College and University Campuses

www.campusdrugprevention.gov/onepill



DEA

**ONE
PILL CAN
KILL**

**Auburn
University**

Today's illicitly manufactured drug market is becoming inundated with fentanyl laced products. Fentanyl is killing Americans at an unprecedented rate. Many overdose victims have no idea they are ingesting fentanyl, until it's too late.



www.campusdrugprevention.gov/onepill



ONE PILL CAN KILL

University at Albany

BE AWARE OF COUNTERFEIT PRESCRIPTION PILLS



Fentanyl-laced pills have been reported in the Albany area

- Counterfeit pills are widely available and can be lethal
- Any pill can be unknowingly tampered with and contain fentanyl
- Refrain from purchasing/using pills via social media or other unknown sources

Signs of Opioid Overdose

- Small, constricted "pinpoint pupils"
- Falling asleep or loss of consciousness
- Slow, shallow breathing
- Choking or gurgling sounds
- Pale, blue, or cold skin

- Examples of drugs that can be laced:
 - Oxycodone (Oxycontin, Percocet)
 - Hydrocodone (Vicodin)
 - Alprazolam (Xanax)
 - Amphetamines (Adderall)

YOU CAN HELP



1. Share this information
2. Sign up for a NALOXONE training

Strategies such as a cold shower or coffee will not save someone. Naloxone is a life saving medication that will reverse harmful effects of an opioid overdose.

3. If you see signs of overdose, or if you're unsure, call for help:
On Campus: (518) 442-3131
Off Campus: 911

UAlbany's Good Samaritan Policy

eliminates disciplinary consequences for you and the students you are with if you call for help when drinking or using other drugs.



SOURCES:
Preventing an opioid overdose tip card. <https://www.ctdcp.gov/nd4.1/PreventFromOpioidOverdose-Tip-Card-a.pdf>
<https://www.cdc.gov/drugoverdose/pdf/patients/Preventing-an-Opioid-Overdose-Tip-Card-a.pdf>
Drug Overdose and Substance Use: Containing, Treating and Preventing Fatal Drug Overdose. International Association of Chiefs of Police, September 27, 2016. Retrieved from <https://www.dea.gov/sites/default/files/2016-09/20160927-Preventing-From-Fatal-Drug-Overdose-Response-Strategy-And-The-OPH-Issue-Warning.pdf>

BE AWARE OF FENTANYL-LACED CANNABIS



Reports of fentanyl-laced cannabis are on the rise.

- Cannabis products can be unknowingly tampered with and contain fentanyl
- Recent reports have confirmed fentanyl in cannabis flower products.
- Refrain from acquiring cannabis via social media or other unknown sources

- As a federally funded institution of higher education, no use of cannabis, in any form, is allowed at the University at Albany.
- In areas where recreational cannabis is legal, dispensaries offer a degree of safety that is not available when purchasing from a dealer.

YOU CAN HELP



1. Share this information
2. Sign up for a NALOXONE training

Strategies such as a cold shower or coffee will not save someone. Naloxone is a life saving medication that will reverse harmful effects of an opioid overdose.

3. If you see signs of overdose, or if you're unsure, call for help:
On Campus: (518) 442-3131
Off Campus: 911

UAlbany's Good Samaritan Policy

eliminates disciplinary consequences for you and the students you are with if you call for help when drinking or using other drugs.

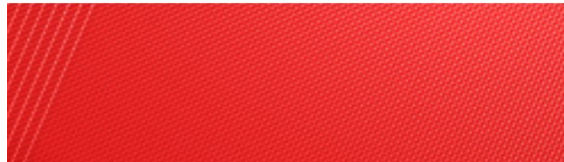


SOURCES:
Preventing an opioid overdose tip card. <https://www.cdc.gov/drugoverdose/pdf/patients/Preventing-an-Opioid-Overdose-Tip-Card-a.pdf>
<https://portal.ct.gov/OPH/Press-Room/Press-Releases---2021/01/rel-01-21-From-The-Connecticut-Overdose-Response-Strategy-And-The-OPH-Issue-Warning>



BE AWARE OF COUNTERFEIT PRESCRIPTION PILLS

Fentanyl-laced pills have been reported in the Albany area



YOU CAN HELP



1. Share this information
2. Sign up for a NALOXONE training (see link in bio)
Strategies such as a cold shower or coffee will not save someone. Naloxone is a life saving medication that will reverse harmful effects of an opioid overdose.
3. If you see signs of overdose, or if you're unsure, call for help:
On Campus: (518) 442-3131
Off Campus: 911



DEA

**ONE
PILL CAN
KILL**

University of Central Florida



www.campusdrugprevention.gov/onepill



DEA

ONE PILL CAN KILL

University of Virginia



ONE PILL CAN KILL

Fake prescription pills are now easily available through social media and e-commerce. Pills often contain fentanyl or methamphetamine, which can be deadly.

ONE PILL CAN KILL

Many counterfeit pills are made to look like prescription opioids such as oxycodone, hydrocodone, alprazolam, or even stimulants like amphetamines.

In one study, a DEA testing lab found that 4 out of every 10 pills with fentanyl contained a potentially lethal dose.



The poison control hotline gives free, confidential, expert medical advice 24/7 for overdose concerns.



Poison Control can assist in identifying fake pills.

Dial 1-800-222-1222 or scan this QR code to call your local Poison Center:



ONE PILL CAN KILL



TO LEARN MORE:

go to: dea.gov/onepill

or scan this QR code:



www.campusdrugprevention.gov/onepill



DEA

DEA's Outreach to Colleges and Universities



Drug Enforcement
Administration

Strategic Prevention Framework





Drug Enforcement
Administration

The SPF Process Answers...



**What is the
problem?**



**What do I have
to work with?**



**What should I do,
and how should
I do it?**



**How can I put my
plan into action?**



**Is my plan
succeeding?**



Drug Enforcement
Administration

Why Use the Strategic Prevention Framework? Because it...



**Is data
driven**

**Good decisions
require data.**



**Is dynamic
and iterative**

The SPF is a
circular, rather
than a linear,
model.



**Relies on and
encourages a
team approach**

Requires—and
benefits from—
participation from
diverse community
partners.



Drug Enforcement
Administration

Strategic Planning Guide

Prevention is not random.

- Prevention needs to be **intentional**.
- It needs to be **purposeful**.
- It needs to be **strategic**.



PREVENTION WITH PURPOSE:

A STRATEGIC PLANNING GUIDE FOR
PREVENTING DRUG MISUSE
AMONG COLLEGE STUDENTS

Campus Drug Prevention
www.campusdrugprevention.gov

DRUG ENFORCEMENT ADMINISTRATION

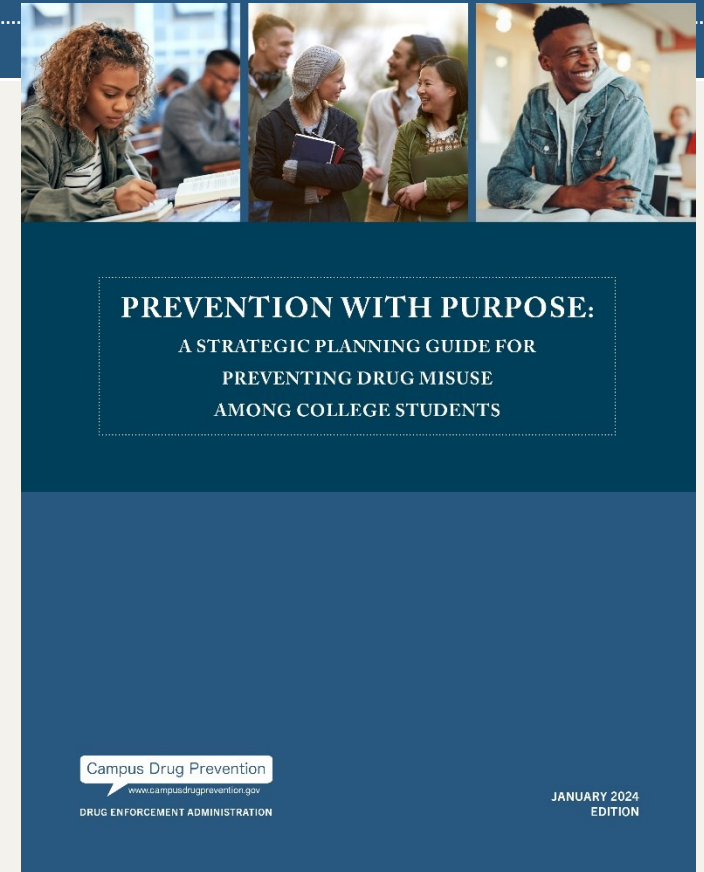
JANUARY 2024
EDITION



Drug Enforcement
Administration

Prevention with Purpose

- Provides a road map for prevention professionals to collaborate with a range of stakeholders to address campus-wide drug misuse issues
- Overview of the guide
 - Eight easy-to-read chapters with helpful graphics
 - Print and online versions
 - Online resources associated with each chapter
- What's New in the 2024 Edition
 - Data update
 - SPF Profiles in Action
 - Integrating Culture Throughout the SPF
 - Prevention Success During Times of Disruption





UPDATED EDITION



PREVENTION WITH PURPOSE: A STRATEGIC PLANNING GUIDE FOR PREVENTING DRUG MISUSE AMONG COLLEGE STUDENTS

Campus Drug Prevention
www.campusdrugprevention.gov

DEPARTMENT OF JUSTICE
FEDERAL BUREAU OF INVESTIGATION
NATIONAL CENTER FOR
SUBSTANCE ABUSE AND
DRUG ENFORCEMENT ADMINISTRATION

JANUARY
2020
EDITION

What's New in this Edition of *Prevention with Purpose*

Data Update

Data from the January 2020 edition was reviewed, revised, and updated as needed. The updates make this edition more current and reflective of the prevention landscape at the time of publication.

SPF Profiles in Action

Throughout the guide we have added profiles highlighting real-life stories from campus prevention professionals. Included throughout the guide, each profile focuses on a unique or innovative approach to a step of the SPF process. The profiles were developed from interviews with prevention professionals from schools across the country.

Culture Throughout the Strategic Prevention Framework

The revised guide now contains ideas for building considerations of cultural factors into each step of the SPF. By incorporating culture into prevention programming, campuses can better meet the diverse experiences and needs of their student populations, creating a healthy environment for all.

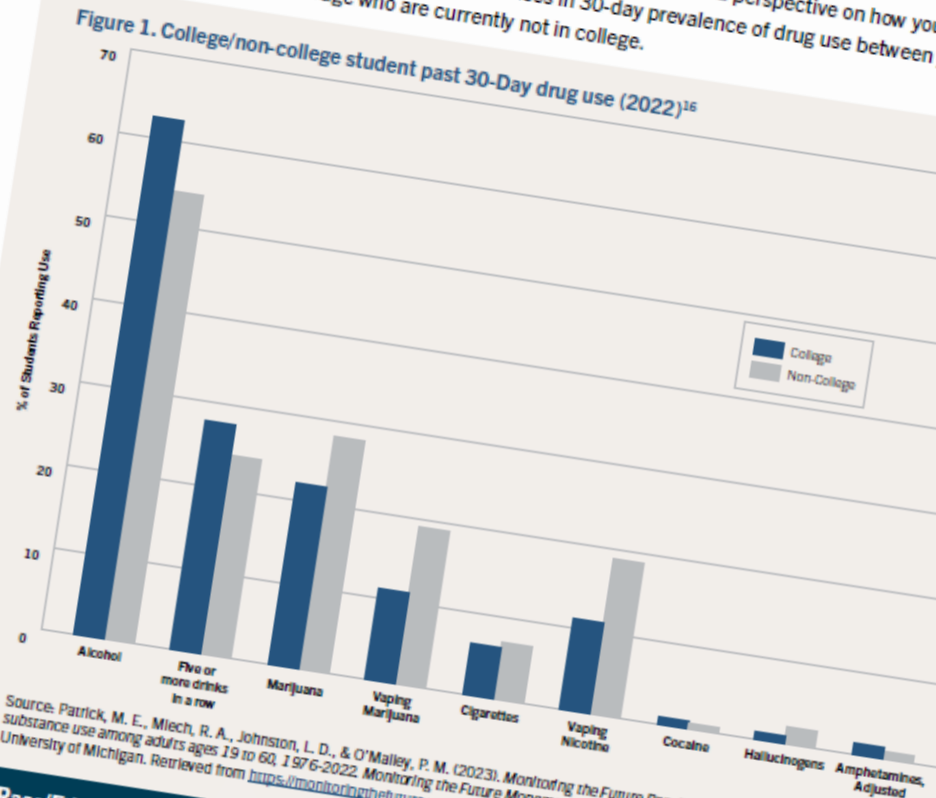
Prevention Success During Times of Disruption

This new chapter focuses on five strategies for success during times of disruption to campus life, such as a break of disease, severe weather, and on- and off-campus tragedies.

PREVENTION WITH PURPOSE: DATA UPDATE

Current Trends in Young Adult Drug Use

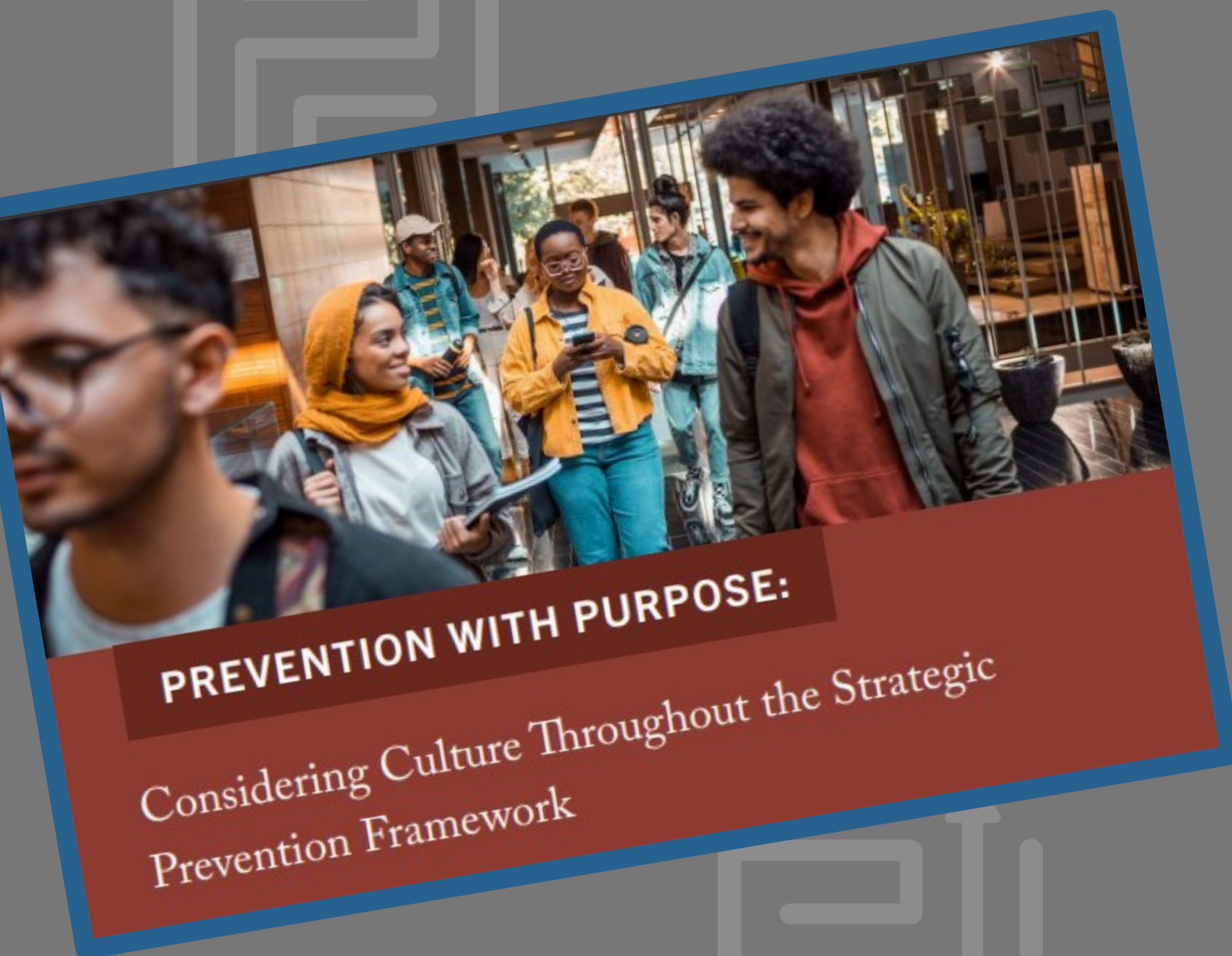
In addition to understanding history, we must also have an evidence-based perspective on how young people are currently using drugs and alcohol. There are differences in 30-day prevalence of drug use between young people in college and those of the same age who are currently not in college.



Source: Patrick, M. E., Mlech, R. A., Johnston, L. D., & O'Malley, P. M. (2023). *Monitoring the Future Panel Study annual report: National data on substance use among adults ages 19 to 60, 1976-2022*. *Monitoring the Future Monograph Series*. Ann Arbor, MI: Institute for Social Research, University of Michigan. Retrieved from <https://monitoringthefuture.org/wp-content/uploads/2023/07/mf-panel2023.pdf>

How Race/Ethnicity and Socioeconomic Status Affect Alcohol and Drug Use by College Students

White students in general are more likely to engage in higher risk alcohol and other drug use than students of other ethnicities. White men, in particular, use alcohol and other drugs more frequently and with greater quantities consumed during college and after college compared to other ethnicities.¹⁷ In addition, students in a higher socioeconomic status were more likely than peers to use marijuana, alcohol, and other substances more frequently.



PREVENTION WITH PURPOSE:

Considering Culture Throughout the Strategic
Prevention Framework

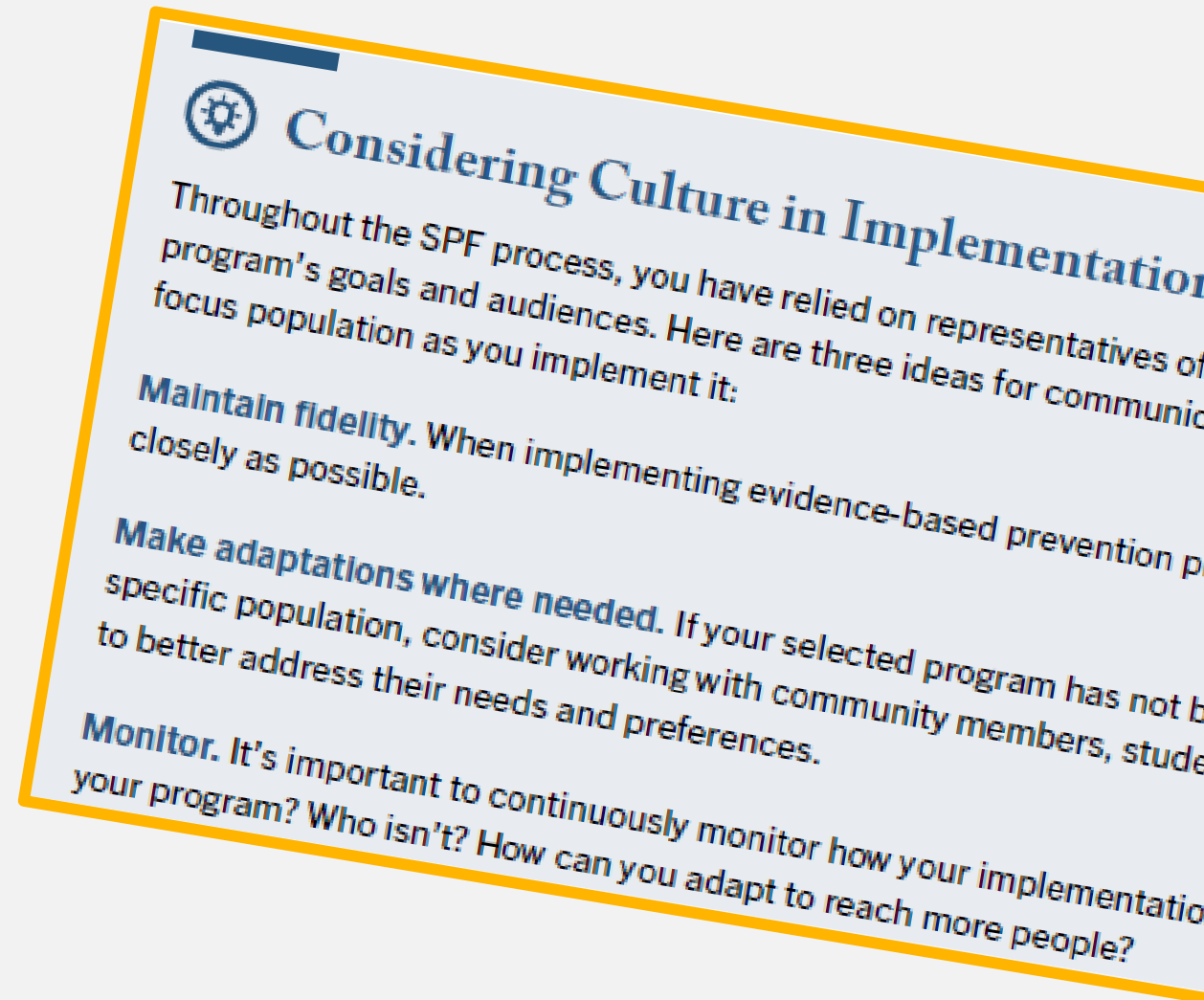


CONSIDERING
CULTURE
THROUGHOUT
THE SPF



HIGHLIGHTING CULTURE

- New sections Chapters 3-7
- Highlight actions and considerations needed to ensure culturally responsive and inclusive prevention programming and processes.
- Links directly to the Prevention with Purpose: Considering Culture Throughout the Strategic Prevention Framework



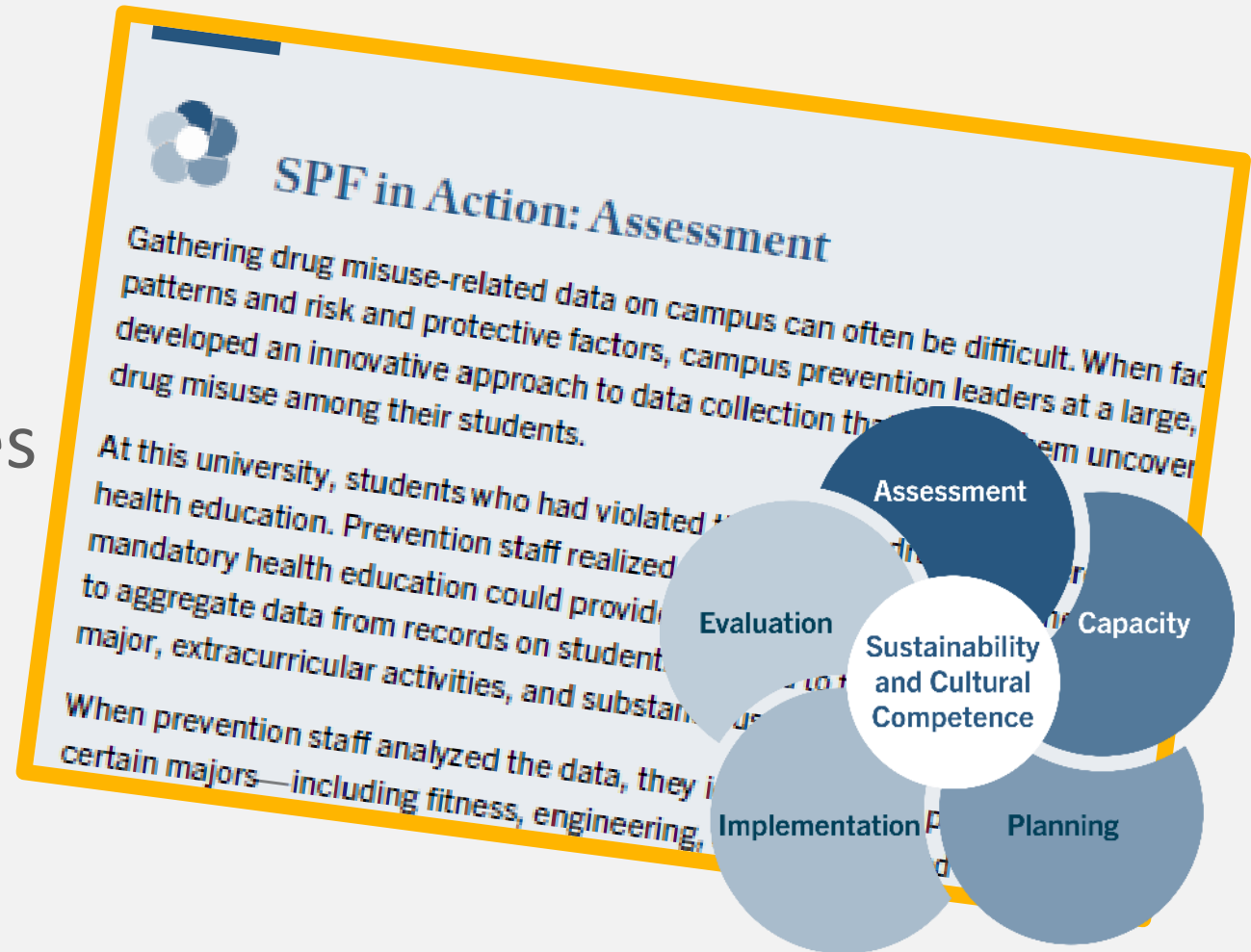
SPF IN ACTION PROFILES





DEVELOPMENT OF PROFILES

- One profile per SPF Step
- More than a dozen interviews with campus prevention professionals
- Provides real world examples of the application of each SPF step
- Unique approaches to challenges





SPF IN ACTION: HIGHLIGHTS

Assessment

- Finding data sources to inform prevention when data is limited

Capacity

- Unique and innovative ways to get reluctant partners to see the need to prioritize prevention

Planning

- Creative ways to engage students in the planning process

Implementation

- Using process data to improve implementation in real time

Evaluation

- Intentional and innovative efforts to evaluate prevention strategies





CHAPTER 8

Prevention Success During Times of Disruption

“During times of crisis, we as prevention professionals may be faced with challenges that may appear to be insurmountable and may stretch both our professional and personal resources. During such times, it is especially important for us to take the time to learn from our experiences, seek support from colleagues, reframe what we see as barriers, and reimagine our path forward with the benefit of our knowledge, skills, perseverance, and commitment to our students.”

—Dolores Cimini, Director, Center for Behavioral Health Promotion and Applied Research at University at Albany, SUNY



NEW CHAPTER: Prevention Success During Times of Disruption



DEFINING DISRUPTION

Any event that either poses to, or actively interrupts, the regular learning of students on campus – disruption can divert resources and attention from campus prevention efforts.





PREVENTION IN TIMES OF DISRUPTION

Strategies for preparing for and responding to disruptions

- Based on interviews with campus prevention professionals
- Builds on learning during the COVID-19 pandemic
- Strategies are connected to the SPF process



STRATEGIES TO PREPARE FOR DISRUPTION

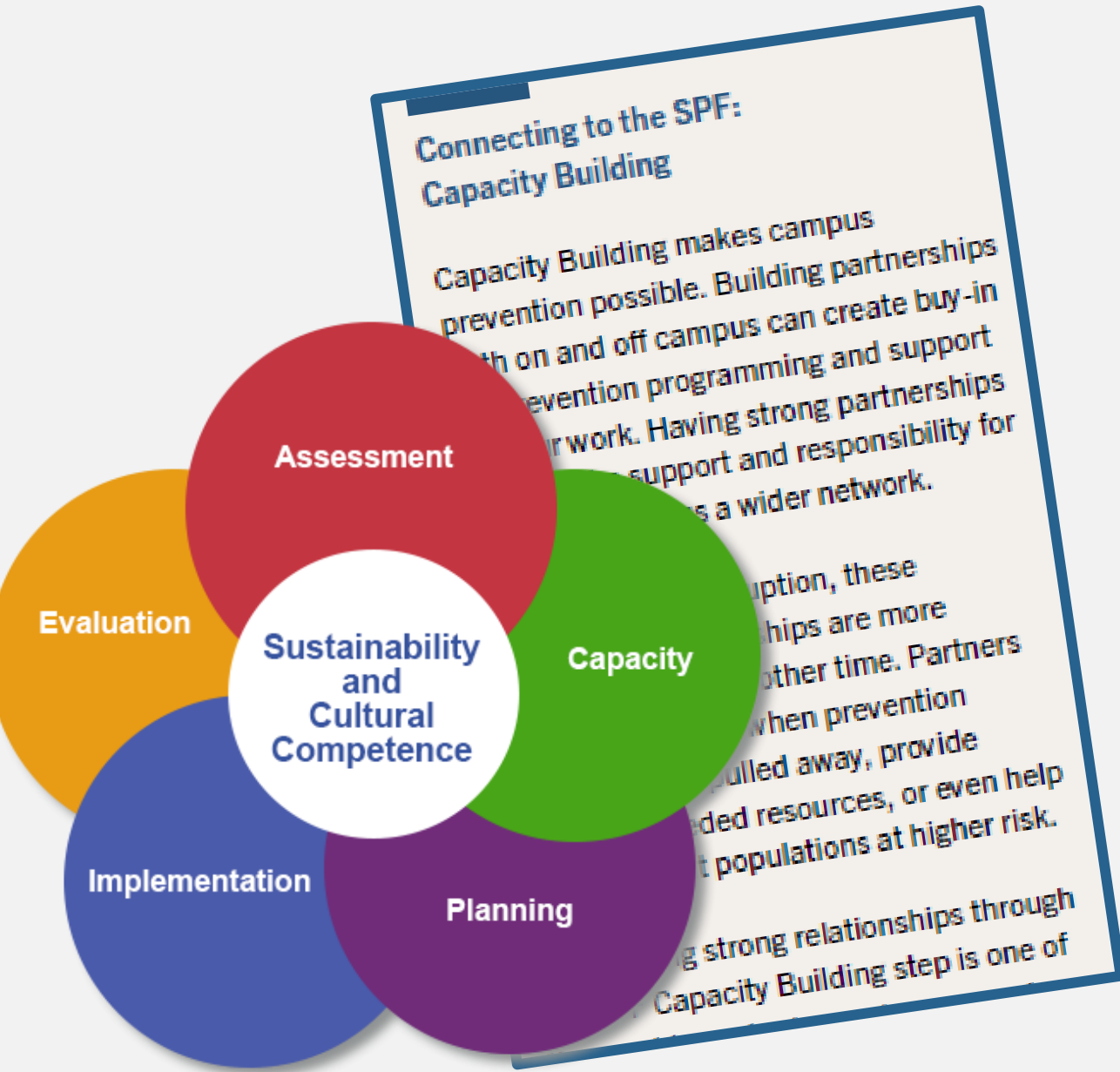


1. Stay Strategic
2. Commit to Assessment
3. Leverage Existing Partnerships
4. Get Close to Leadership
5. Be Flexible and Creative





DISRUPTION AND THE SPF



- Strategies align with the SPF steps – or tasks with a step
- Strategic planning is the best preparation for the unknown



DEA

DEA's Prevention Resources for Colleges and Universities



DEA

DEA's Resources for Colleges and Universities Campus-Specific Fact Cards

WHAT YOU SHOULD KNOW ABOUT
CANNABIS USE
AMONG COLLEGE STUDENTS



PREVALENCE

- Nearly one in 12 college students (7.9 percent) use marijuana on a daily basis, which is the highest

WHAT YOU SHOULD KNOW ABOUT
PRESCRIPTION DRUG
MISUSE AMONG COLLEGE STUDENTS



PREVALENCE

- Approximately 10% of college students reported using one or more types of prescription drugs (i.e.,

WHAT YOU SHOULD KNOW ABOUT...
IMPAIRED DRIVING
AMONG COLLEGE STUDENTS



PREVALENCE & CONSEQUENCES

- In 2016-2020, among full-time college students attending 4-year colleges at ages 19-22, 17.4% reported driving under the influence of alcohol, marijuana, or another illicit drug in the past 2 weeks.



DEA

DEA's Resources for Colleges and Universities

www.campusdrugprevention.gov

The screenshot shows the homepage of the Campus Drug Prevention website. At the top left, there is a logo for 'Campus Drug Prevention' with the URL 'www.campusdrugprevention.gov'. To the right, there is a social media link for Twitter: 'Follow us on Twitter @deahq, #deacampus'. Below this is a 'SIGN UP FOR UPDATES' section with an input field for 'Email address' and a 'Submit' button. A navigation menu includes links for HOME, DRUGS & PARAPHERNALIA, RESEARCH, PUBLICATIONS, RESOURCES, UPCOMING EVENTS, and THE STUDENT CENTER, along with a search icon. The main content area features a large image of a hand holding a smartphone displaying a podcast player interface. A blue text box on the left of the image reads: 'NEW PODCAST Deb Augustine, from DEA's Victim Witness Assistance Program, discusses the drugs often used in sex assault and much more on this month's episode.' Below the image, the word 'Welcome' is centered. To the left of the video player, there is a paragraph: 'The Drug Enforcement Administration (DEA) is pleased to provide institutions of higher education and their surrounding communities with these resources to prevent drug misuse among college students. We are committed to promoting the importance of prevention and its role in helping ensure the health and safety of our nation's colleges and universities. [View an introductory video clip of the website's features.](#)' To the right of the text is a video player showing Miss America Camille Schrier speaking, with a play button overlay. The video title is 'Miss America Camille Schrier's Campus...'.



DEA

DEA's Resources for Colleges and Universities *Prevention with Purpose* Supplemental Resources



PREVENTION WITH PURPOSE:

A Resource for Student Affairs Professionals



PREVENTION WITH PURPOSE:

A Resource for Campus Police and Public Safety Personnel



PREVENTION WITH PURPOSE:

A Resource for Community and Technical Colleges



PREVENTION WITH PURPOSE:

A Resource for Faculty Members



PREVENTION WITH PURPOSE:

A Resource for Presidents and Senior Administrators



PREVENTION WITH PURPOSE:

Considering Culture Throughout the Strategic Prevention Framework



PREVENTION WITH PURPOSE:

Promoting Shared Responsibility Using a Collective Impact Framework



PREVENTION WITH PURPOSE:

Campus Health/Counseling Center Administrators



PREVENTION WITH PURPOSE:

A Resource for Engaging Student-Led Organizations



PREVENTION WITH PURPOSE:

Working with Community Coalitions



DEA

DEA's Resources for Colleges and Universities Red Ribbon Week Campus Video PSA Contest



The screenshot shows a web browser window with the URL campusdrugprevention.gov/psacontest. The page features a blue header with the text "Campus Drug Prevention" and the website URL. Below the header is a navigation menu with links for "DRUGS & PARAPHERNALIA", "RESEARCH", "PUBLICATIONS", "RESOURCES", "UPCOMING EVENTS", "THE STUDENT CENTER", and "MENU". The main content area has a background image of a diverse group of smiling young people. A red banner across the middle of the page reads "2022 RED RIBBON WEEK CAMPUS VIDEO PSA CONTEST" and includes the text "This annual contest aims to promote the importance of living a drug-free lifestyle." Below the banner are four red circular icons with white symbols: a graduation cap for "What", a video camera for "How", a calendar for "When", and an information icon for "FAQs". The browser's address bar shows "DEA SENSITIVE BUT UNCLASSIFIED" and the system tray at the bottom indicates the date is 2/13/2023.



ADDITIONAL RESOURCES

- [Collaborating with Higher Education](#) (Strategic Prevention Technical Assistance Center, Tip Sheet)
- [The Competencies Guide for Higher Education Substance Misuse Prevention](#) (Mid-America PTTC)
- [Inclusive Substance Abuse Prevention Among College Students \(MN\)](#) (Wilder Research)
- [Prevention on the College Campus](#) (Mid-America PTTC, recorded podcast)
- [Working Together: Understanding How Community Coalitions Can Partner with College Campus Prevention](#) (Great Lakes PTTC, recorded webinar)



DEA

Contact Information

Rich Lucey

Senior Prevention Program Manager

Drug Enforcement Administration

Community Outreach and Prevention Support Section

richard.lucey@dea.gov

Erin Ficker

Project Director

Education Development Center, Inc.

eficker@edc.org



**CAMPUS
HEALTH**

**Strategic Prevention Framework
at
The University of Arizona**

Peggy Glider, Ph.D.

www.health.arizona.edu



ASSESSMENT

- Quantitative Assessment Data
 - Annual Health and Wellness Survey – random sample of classes
 - Biannual AZIHE Wellness Survey – statewide online survey
 - Campus data (Campus Police, Dean of Students, Residence Life, etc.)
- Qualitative Assessment Data
 - Key Stakeholder Interviews
 - Student Focus Groups
 - Documents review – meeting minutes, requests for information/presentations/trainings, etc.
- Share data with key stakeholders regularly

CAPACITY



**CAMPUS
HEALTH**

- It's all about relationships
- Developed good working relationships with departments across campus (academic and student affairs)
- Developed good working relationships with community agencies
- Engaged regularly with partners, collaborators and interested parties
- Continued to determine who else should be at the table, including identifying those who may NOT be supportive and how to get them engaged
- Determined and built cross-departmental resources
- Tried to think outside the box
- Made sure to include a wide variety of voices, experiences and groups

PLANNING



Built a strategic plan with committee of stakeholders

- Based on assessment data
- Utilized strengths and resources from partners
- Identified or developed programming to fill in gaps and meet identified needs
 - Campus as a whole
 - Specific sub-populations
- Shared and continued to update strategic plan, as needed, with collaborators/partners

IMPLEMENTATION



- Utilized strategic plan to determine:
 - Which programs to provide to whom
 - When
 - How often
- Hired and/or trained staff to implement programming
- Monitored programs for fidelity across time, staff and participant groups
- Modified programs, as needed, to meet needs of specific populations



EVALUATION

- Process evaluation
 - What was provided
 - To whom
 - How often
 - Fidelity
- Outcome evaluation
 - Collected pre/post or retrospective posttests
 - Conducted focus groups with participants
 - Looked for changes in data from assessment surveys
- Shared findings with staff and key stakeholders
- Continued to use findings to revise strategic plan and/or programming as needed

Considered these across each step of the model:

- Approached each aspect of the model with cultural humility
 - Made sure that individuals were encouraged to share their ideas/perspectives based on personal identities and lived experiences
- Thought about sustainability for each aspect of the model
 - Considered what resources and collaborative supports were needed



**CAMPUS
HEALTH**

Peggy Glider, Ph.D.

Evaluation Consultant

peggyglider57@gmail.com

520-403-1147

www.health.arizona.edu

Post-Webinar Feedback

Please click on the link in the chat to complete a very brief online feedback form!

Thank you!



Connect with us!

Find us on the web: www.pspttc.org

Join our mailing list: <http://eepurl.com/glssWD>

Email with general questions: pspttc-info@casat.org

Like us on Facebook: <https://tinyurl.com/PSPTTC-Facebook>

Follow us on Twitter: https://twitter.com/PS_PTTC

Call us toll-free: 1-833-9SW-PTTC

Pacific Southwest PTTC Contact Information

Britany Wiele
Project Coordinator

bwiele@casat.org



Pacific Southwest (HHS Region 9)

PTTC

Prevention Technology Transfer Center Network
Funded by Substance Abuse and Mental Health Services Administration

Thank You!

CASAT

 Center for the Application of
Substance Abuse Technologies
UNIVERSITY OF NEVADA, RENO

