

Unraveling Connections:
Social Determinants of Health and
Substance Misuse Prevention
Ben Stevenson, MS, CPP
January 25, 2023



Acknowledgement

This presentation was prepared for the South Southwest Prevention Technology Transfer Center (PTTC) Network under a cooperative agreement from the Substance Abuse and Mental Health Services Administration (SAMHSA). All material appearing in this publication, except that taken directly from copyrighted sources, is in the public domain and may be reproduced or copied without permission from SAMHSA or the authors. Citation of the source is appreciated. Do not reproduce or distribute this publication for a fee without specific, written authorization from the South Southwest Prevention Technology Transfer Center. For more information on obtaining copies of this publication, contact us at pttc6@ou.edu.

At the time of this publication, Miriam E. Delphin-Rittmon, Ph.D, served as Assistant Secretary for Mental Health and Substance Use in the U.S. Department of Health and Human Services and the Administrator of the Substance Abuse and Mental Health Services Administration.

The opinions expressed herein are the view of PTTC Network and do not reflect the official position of the Department of Health and Human Services (DHHS), SAMHSA. No official support or endorsement of DHHS, SAMHSA, for the opinions described in this document is intended or should be inferred.

This work is supported by grants 6UR1TI08205-02M002, SM081726 and 1H79SP081006-01 from the Department of Health and Human Services, Substance Abuse and Mental Health Services Administration.



South Southwest (HHS Region 6)

PTTC

Prevention Technology Transfer Center Network
Funded by Substance Abuse and Mental Health Services Administration

Our Roadmap Today

- Introduction of Social Determinants of Health (SDOH)
- Social Ecological Model
- Spectrum of Mental, Emotional, and Behavioral Interventions
- SDOH and risk factor
- Strategies to address the SDOH in our communities
- Wrap up
- Q&A



South Southwest (HHS Region 6)

PTTC

Prevention Technology Transfer Center Network
Funded by Substance Abuse and Mental Health Services Administration



Ben Stevenson II, CPP, MS
Certified Prevention Professional



South Southwest (HHS Region 6)

PTTC

Prevention Technology Transfer Center Network
Funded by Substance Abuse and Mental Health Services Administration

Learning Objectives



Describe the profound impact of social determinants of health on substance misuse and the pivotal role prevention professionals play in addressing social determinants.



Identify intervention points for prevention professionals to address social determinants at the community level.



List evidence-based substance misuse prevention activities that reduce SDOH disparities at the community level.



South Southwest (HHS Region 6)

PTTC

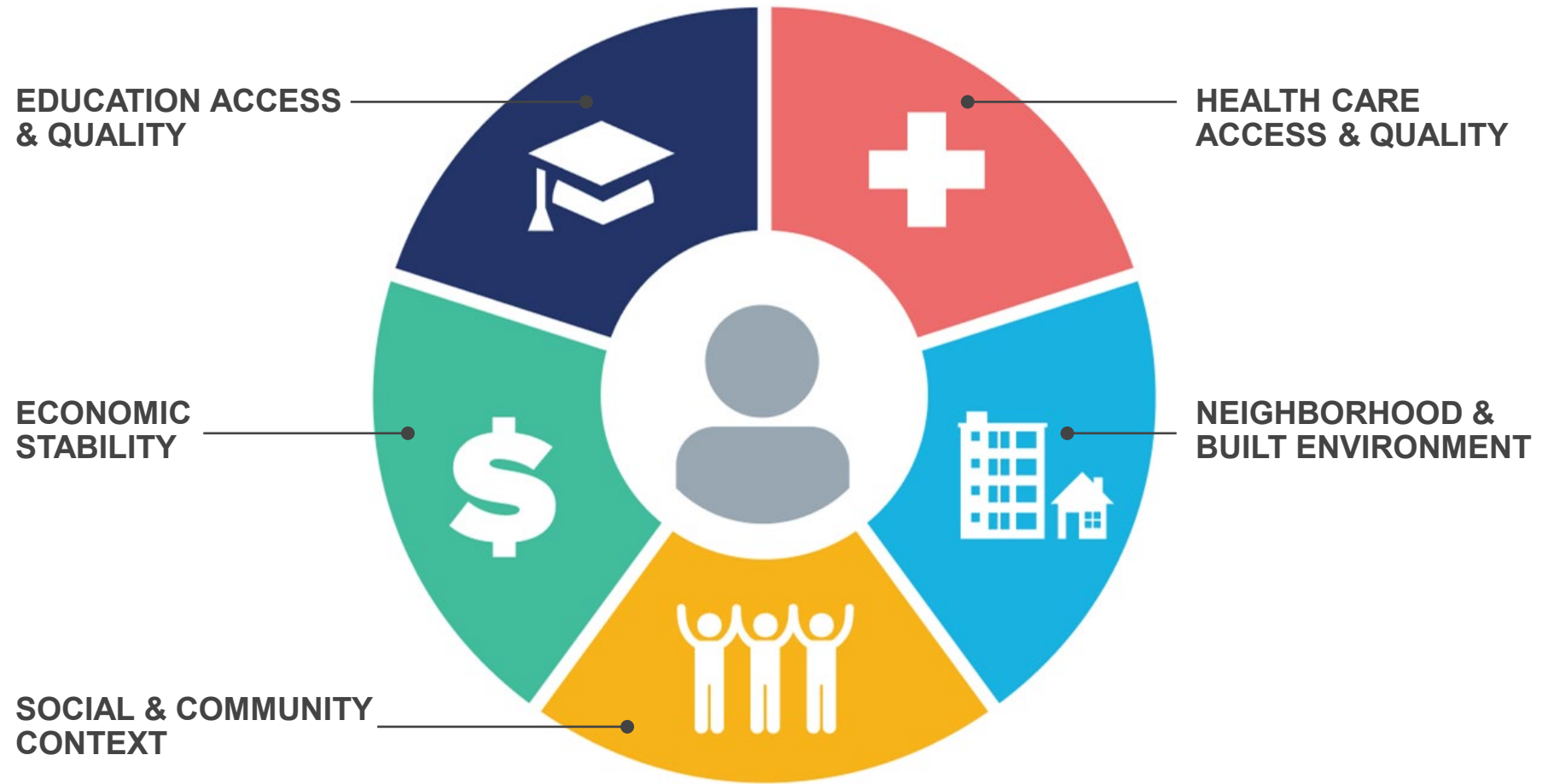
Prevention Technology Transfer Center Network
Funded by Substance Abuse and Mental Health Services Administration

Objective 1

Describe the profound impact of social determinants of health on substance misuse and the pivotal role prevention professionals play in addressing social determinants.



Social Determinants of Health (SDOH)



South Southwest (HHS Region 6)

PTTC

Prevention Technology Transfer Center Network
Funded by Substance Abuse and Mental Health Services Administration

The Influence of SDOH on Substance Misuse



Multiple Context and SDOH



South Southwest (HHS Region 6)

PTTC

Prevention Technology Transfer Center Network
Funded by Substance Abuse and Mental Health Services Administration

SDOH and Substance Use Risk

SDOH have been directly associated with an increased risk of substance use.

Others are associated with increased rates of stress and anxiety, which can increase the likelihood of substance use.

Some SDOH have both direct and indirect associations with substance use.



South Southwest (HHS Region 6)

PTTC

Prevention Technology Transfer Center Network
Funded by Substance Abuse and Mental Health Services Administration

Equitable Access to SDOH Act as Protective Factors



**ECONOMIC
STABILITY**



EDUCATION



**SOCIAL SUPPORT
NETWORKS**



**HEALTHCARE
ACCESS**



**NEIGHBORHOOD
ENVIRONMENT**



**LEGAL AND POLICY
ENVIRONMENT**



**CULTURAL
COMPETENCY**



**MEDIA
INFLUENCE**



South Southwest (HHS Region 6)

PTTC

Prevention Technology Transfer Center Network
Funded by Substance Abuse and Mental Health Services Administration



The Role of Prevention Professionals

- Proactive
- Educate
- Advocate
- Promote



South Southwest (HHS Region 6)

PTTC

Prevention Technology Transfer Center Network
Funded by Substance Abuse and Mental Health Services Administration

Objective 1, Review

Describe the profound impact of social determinants of health on substance misuse and the pivotal role prevention professionals play in addressing social determinants.



- ✓ Multiple Context SDOH Impacts on Substance Misuse

“When it comes to health, equity is a matter of life and death.” - *WHO Leader Margaret Chan*

Objective 2

Identify intervention points for prevention professionals to address social determinants at the community level.



Social Determinant of Health Intervention Points



Last Reviewed: December 8, 2022 Source: [Centers for Disease Control and Prevention](#)

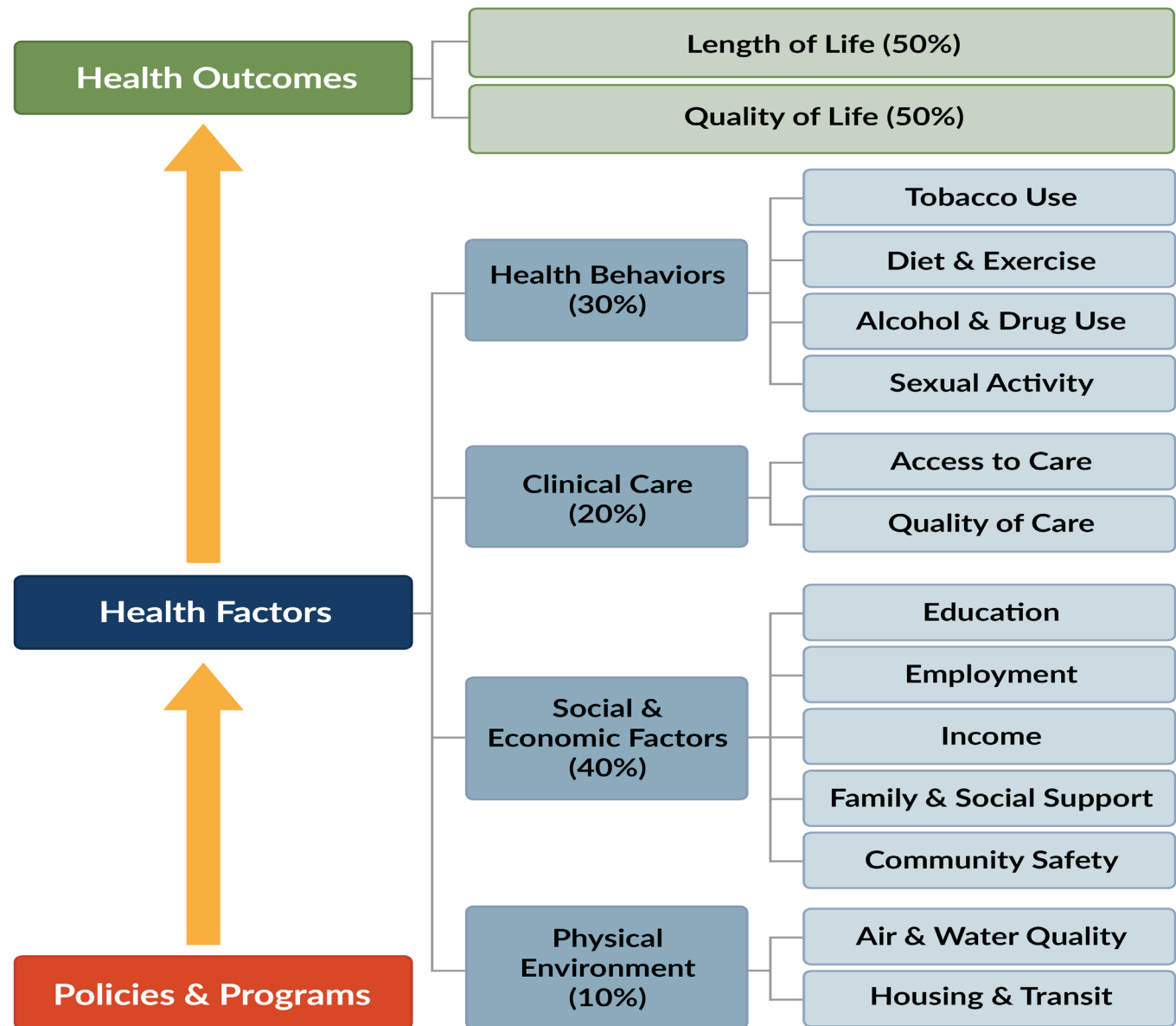


South Southwest (HHS Region 6)

PTTC

Prevention Technology Transfer Center Network
Funded by Substance Abuse and Mental Health Services Administration

County Health Rankings Model



County Health Rankings model © 2014 UWPHI



South Southwest (HHS Region 6)

PTTC

Prevention Technology Transfer Center Network
Funded by Substance Abuse and Mental Health Services Administration

Intervention Points for Prevention Professionals



Convene



Integrate



Influence



Contribute To
Big Changes

Source: CDC (2022)



South Southwest (HHS Region 6)

PTTC

Prevention Technology Transfer Center Network
Funded by Substance Abuse and Mental Health Services Administration

Addressing SDOH

What community partners should we work with to leverage resources to address SDOH?



South Southwest (HHS Region 6)

PTTC

Prevention Technology Transfer Center Network
Funded by Substance Abuse and Mental Health Services Administration

Objective 2 Review

Identify intervention points for prevention professionals to address social determinants at the community level.



- ✓ Social Determinants of Health Intervention Points
- ✓ Partnering with other interest groups

"There is no power for change greater than a community discovering what it cares about."
–Margaret Wheatley, American writer

Objective 3

List evidence-based substance misuse prevention activities that reduce SDOH disparities at the community level.





How can substance use prevention address something as massive as the SDOH?



South Southwest (HHS Region 6)

PTTC

Prevention Technology Transfer Center Network
Funded by Substance Abuse and Mental Health Services Administration

Strategies to Address SDOH



Relationships with social service providers



Inclusion of SDOH in needs assessment



Provider training on SDOH



Social determinant incentives

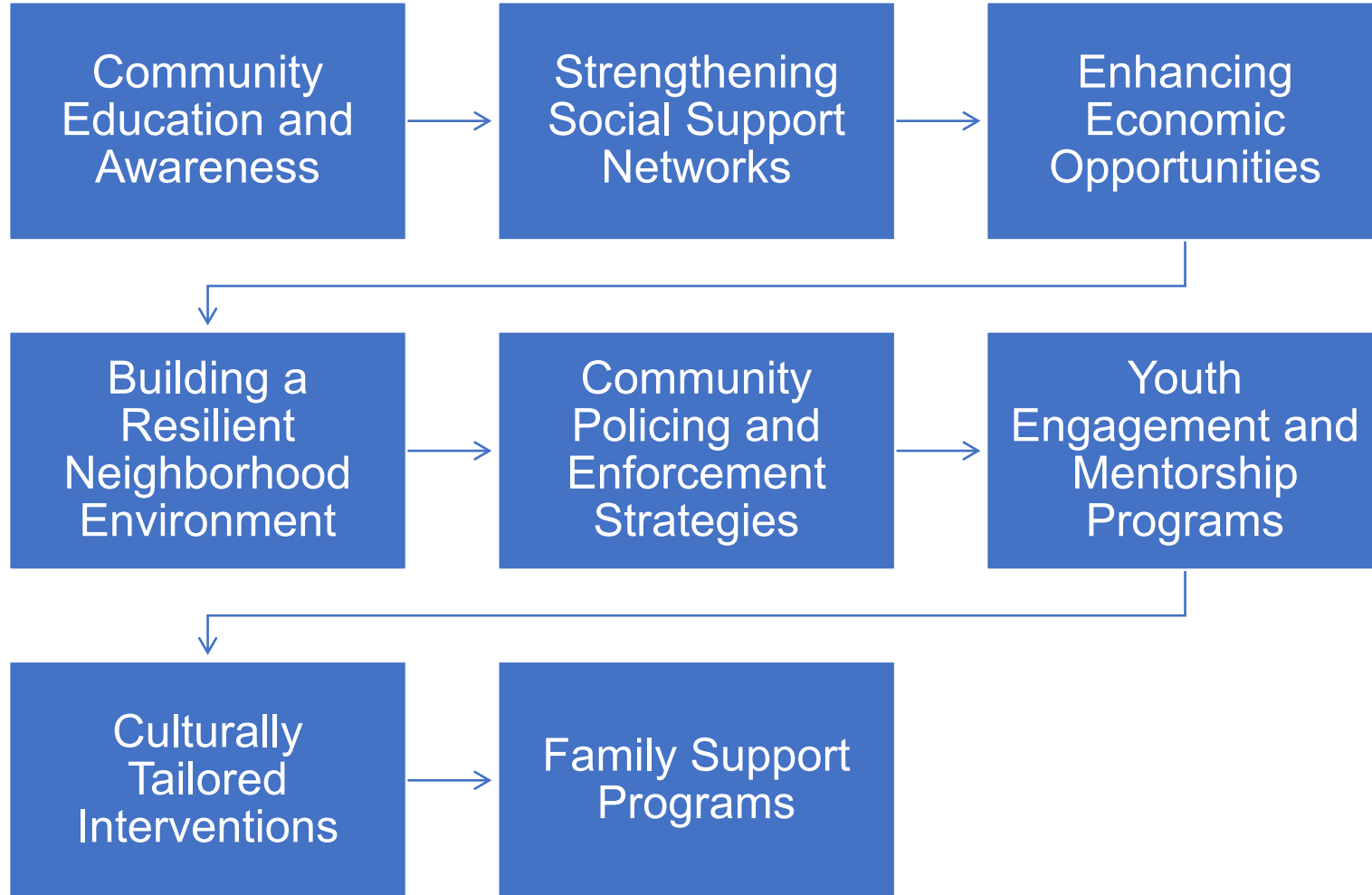
Source: Office of the Assistant Secretary for Planning and Evaluation (2022)



South Southwest (HHS Region 6)

PTTTC

Prevention Technology Transfer Center Network
Funded by Substance Abuse and Mental Health Services Administration



Actionable Strategies

What upstream solutions would you use as a prevention professional to deal with this problem?

- 1. Advocacy for Policy Change:** Advocating for evidence-based policies and programs that support prevention, treatment, and recovery services.
- 2. Community Education and Capacity Building:** Building the capacity of communities through education about substance misuse, mental health, and their intersection with social determinants of health.
- 3. Collaboration with Community Partners:** Building partnerships that focus on addressing housing insecurity, poverty, access to healthcare, and employment opportunities

Objective 3, Review

List evidence-based substance misuse prevention activities that reduce SDOH disparities at the community level.



✓ Actionable Strategies

Teamwork is the ability to work together toward a common vision. The ability to direct individual accomplishments toward organizational objectives. It is the fuel that allows common people to attain uncommon results." – *Andrew Carnegie Industrialist & Philanthropist*



Let's hear from you!

What are your questions?



South Southwest (HHS Region 6)

PTTC

Prevention Technology Transfer Center Network
Funded by Substance Abuse and Mental Health Services Administration



For further questions, contact:

Derrick Newby

T/TA Specialist

South Southwest PTTC Region 6

dnewby@ou.edu

Connect with us @



[SSW PTTC website](#)



[Join our mailing list](#)

[Products and resources](#)



References

- ¹ Amaro, H et al (2021) Social vulnerabilities for substance use: Stressors, socially toxic environments, and discrimination and racism *Neuropharmacology*, 188, <https://doi.org/10.1016/j.neuropharm.2021.108518>
- ² Boardman, J. et al (2001). Neighborhood Disadvantage, Stress, and Drug Use Among Adults. *Journal of Health and Social Behavior* 42(2), 151-165
- ³ Braveman, P.A., *Monitoring equity in health and healthcare: a conceptual framework*. *Journal of health, population, and nutrition*, 2003. 21(3): p. 181.
- ⁴ Centers for Disease Control and Prevention. (2020, January 28). *The social-ecological model: A framework for prevention*. <https://www.cdc.gov/violenceprevention/publichealthissue/social-ecologicalmodel.html>



South Southwest (HHS Region 6)

PTTC

Prevention Technology Transfer Center Network
Funded by Substance Abuse and Mental Health Services Administration

References

- ⁵ Department of Health and Human Services, & Healthy People 2030. (n.d.). *Health equity in Healthy People 2030*. <https://health.gov/healthypeople/priority-areas/health-equity-healthy-people-2030>
- ⁶ Enelamah NV, Lombe M, Yu M, Villodas ML, Foell A, Newransky C, Smith LC, Nebbitt V. Structural and Intermediary Social Determinants of Health and the Emotional and Behavioral Health of US Children. *Children (Basel)*. 2023 Jun 22;10(7):1100. doi: 10.3390/children10071100. PMID: 37508597; PMCID: PMC10377858.
- ⁷ Frieden, T. R. (2010). A framework for public health action: The health impact pyramid. *American Journal of Public Health*, 100(4), 590–595. <https://doi.org/10.2105/AJPH.2009.185652>



South Southwest (HHS Region 6)

PTTC

Prevention Technology Transfer Center Network
Funded by Substance Abuse and Mental Health Services Administration

References

- ⁸ Healthy People 2030. (n.d.). *Social determinants of health*.
<https://health.gov/healthypeople/priority-areas/social-determinants-health>
- ⁹ **National Academies of Sciences, Engineering, and Medicine.** (2019).
Fostering healthy mental, emotional, and behavioral development in children and youth: A national agenda. National Academies Press.
<https://nap.nationalacademies.org/catalog/25201/fostering-healthy-mental-emotional-and-behavioral-development-in-children-and-youth>
- ¹⁰ Palmer, R. & Ismond, D. (2019). Social Determinants of Health: Future Directions for Health Disparities Research. *Etiology Science* 109(S1)
- ¹¹ Robert Wood Johnson Foundation. (June 30, 2017). *Visualizing health equity: One size does not fit all infographic*.
<https://www.rwjf.org/en/library/infographics/visualizing-health-equity.html>



South Southwest (HHS Region 6)

PTTC

Prevention Technology Transfer Center Network
Funded by Substance Abuse and Mental Health Services Administration

Resources

Social Determinants of Health: A Case Study

<https://www.thelundreport.org/content/social-determinants-health-case-study>

How the war on drugs impacts social determinants of health beyond the criminal legal system

<https://www.ncbi.nlm.nih.gov/pmc/articles/PMC9302017/>



South Southwest (HHS Region 6)

PTTC

Prevention Technology Transfer Center Network
Funded by Substance Abuse and Mental Health Services Administration