

Poll #1

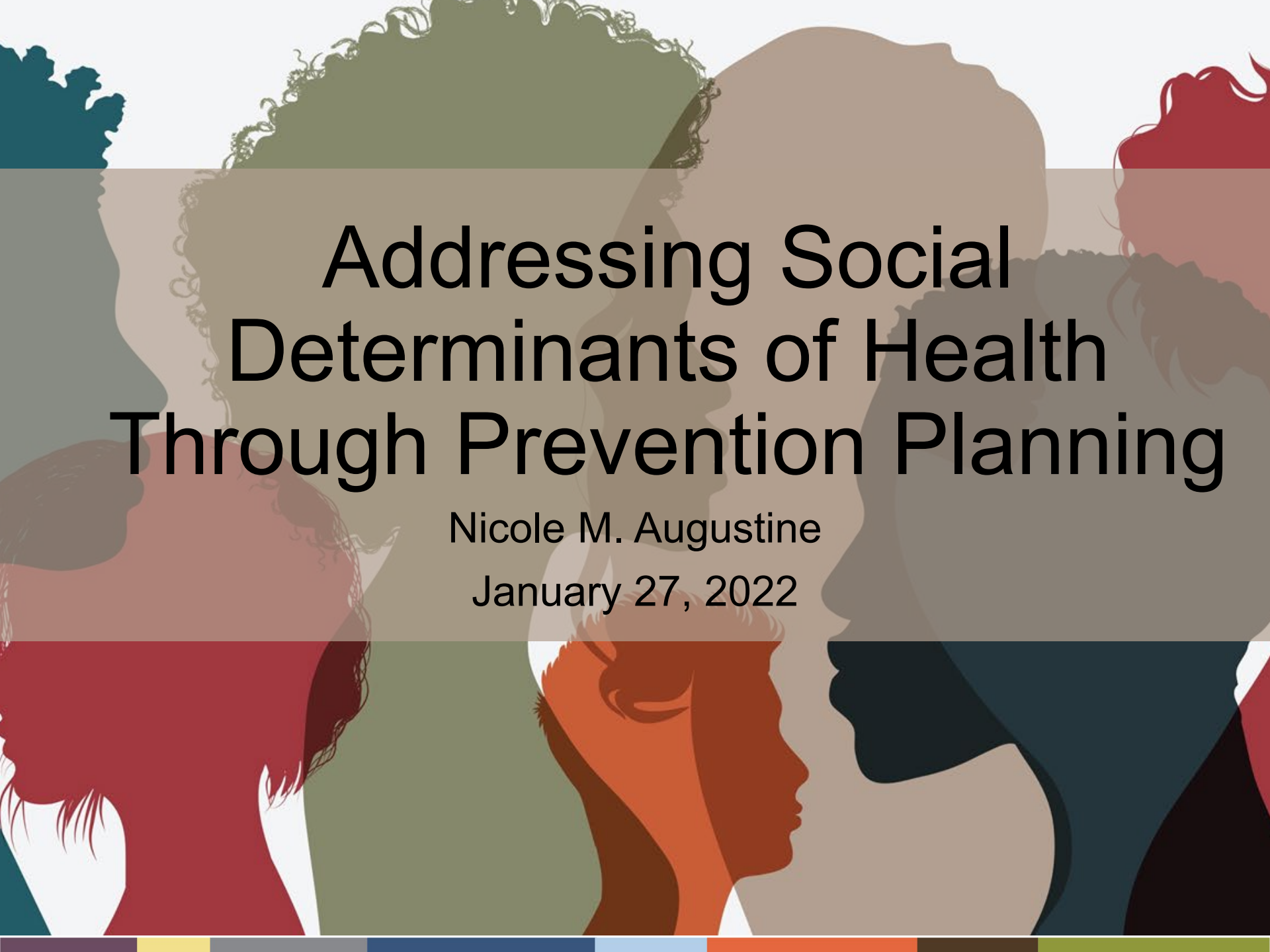
I have a clear understanding how the social determinants of health intersect with prevention.

A. Absolutely!

B. I get it, I'm just not sure how to do it...

C. Not really, I'm still learning.





Addressing Social Determinants of Health Through Prevention Planning

Nicole M. Augustine

January 27, 2022

A Note About Land Acknowledgement:

“It is important to understand the **longstanding history** that has brought you to reside on the land, and to seek to **understand your place** within that history.

Land acknowledgements do not exist in a past tense, or historical context: **colonialism is a current ongoing process**, and we need to build our **mindfulness of our present participation.**”

– [Northwestern University](#)

Creating Our Intention

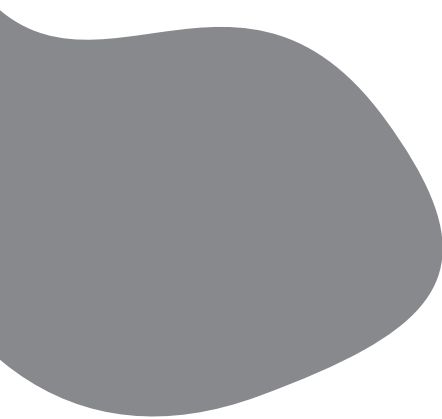


Agenda

Define social determinants of health (SDOH)

Describe how prevention planning can be embedded into the 5 domains of SDOH

Identify opportunities for innovative collaboration



Poll #2

I attended Part 1 of this series on January 6:

- A. Yes
- B. I watched the recording
- C. I don't remember
- D. No



Healthy People 2030 Goal for Social Determinants of Health

Create social and physical environments that promote
good health for all



Definition of Social Determinants of Health

Life-enhancing resources whose distribution across populations effectively determines length and quality of life



5 Domains of Social Determinants of Health

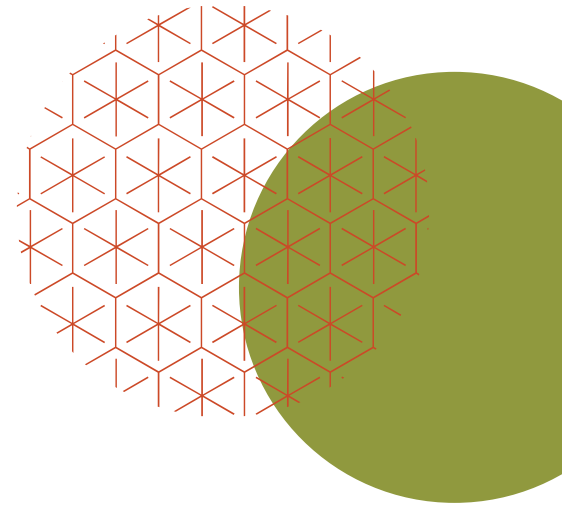


Health Impact Pyramid



Source: Health Impact Pyramid,

<http://www.healthydouglas.org/about-us/what-guides-our-work-in-the-community/health-impact-pyramid/>



Embedding Prevention into SDOH



Education Access and Quality

Early Childhood Education and Development

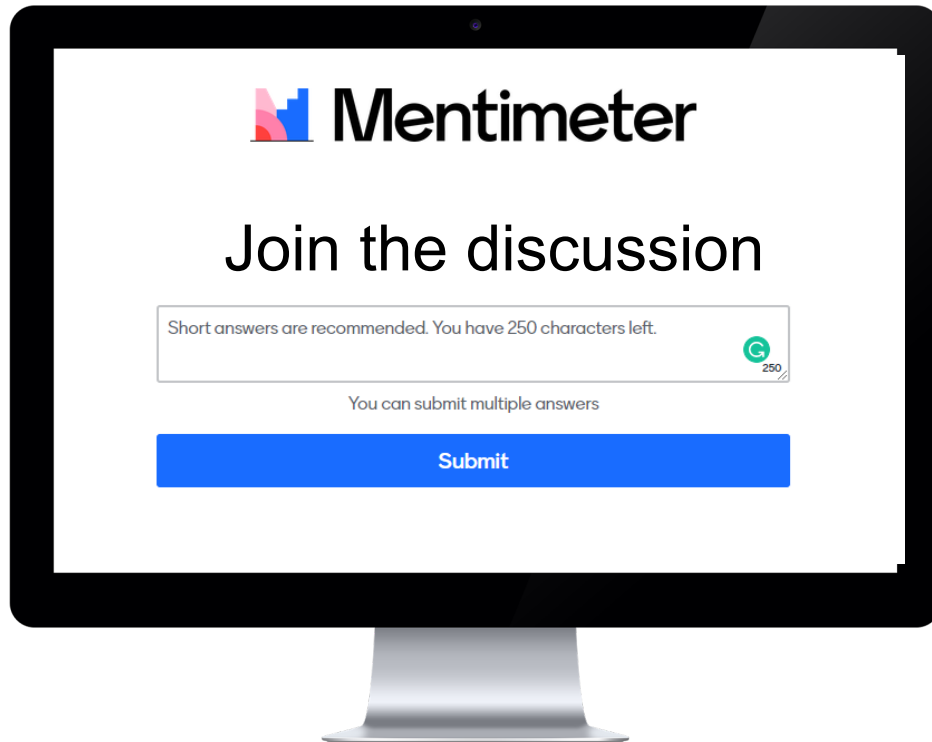
Enrollment in Higher Education

High school Graduation

Language and Literacy



Mentimeter: Reflection 1



Go to:

www.menti.com

Enter Code:

8935 2981

Questions:

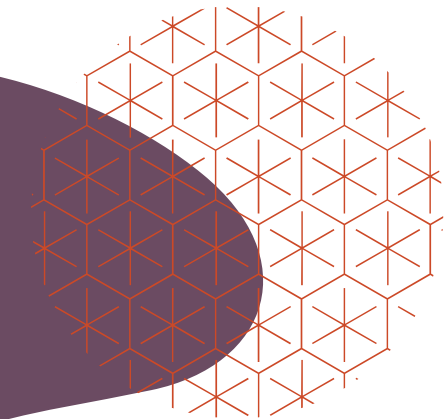
In what way can we provide services that impact this domain?

Health Care and Quality

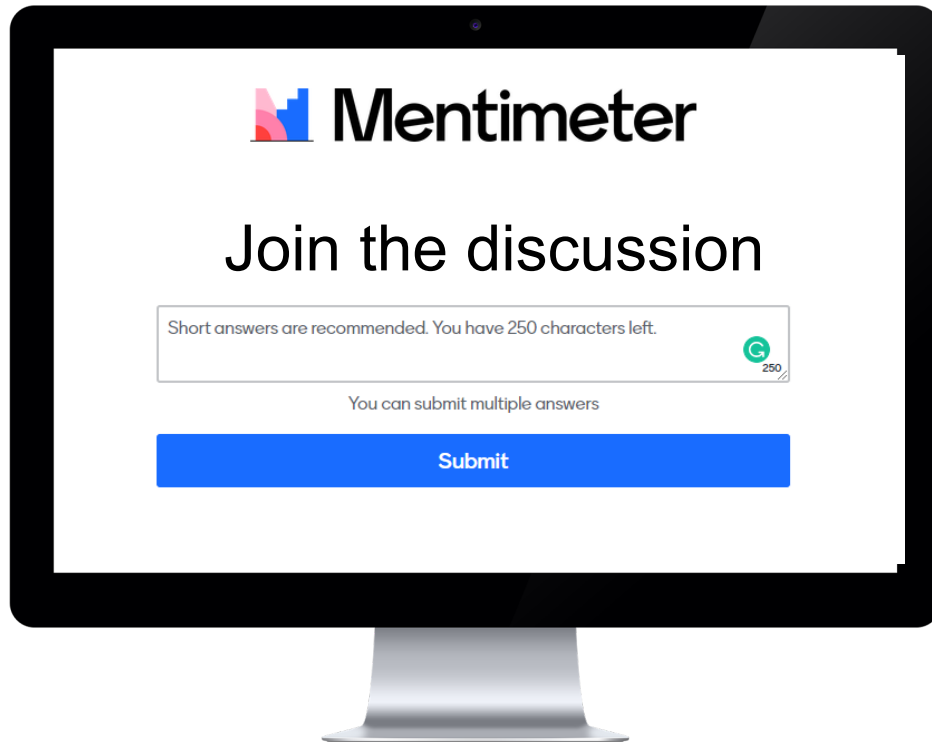
Access to Health Care

Access to Primary Care

Health Literacy



Mentimeter: Reflection 2



Go to:

www.menti.com

Enter Code:

8935 2981

Questions:

In what way can we provide services that impact this domain?

Neighborhood and Built Environment

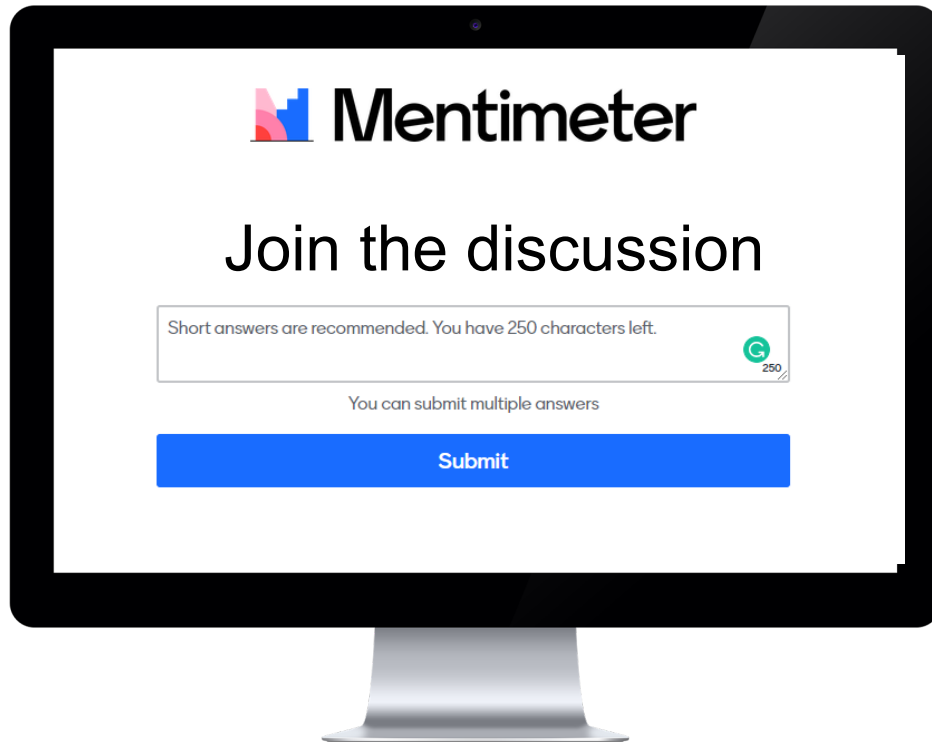
Crime and Violence

Environmental Conditions

Quality of Housing



Mentimeter: Reflection 3



Go to:

www.menti.com

Enter Code:

8935 2981

Questions:

In what way can we provide services that impact this domain?

Social and Community Context

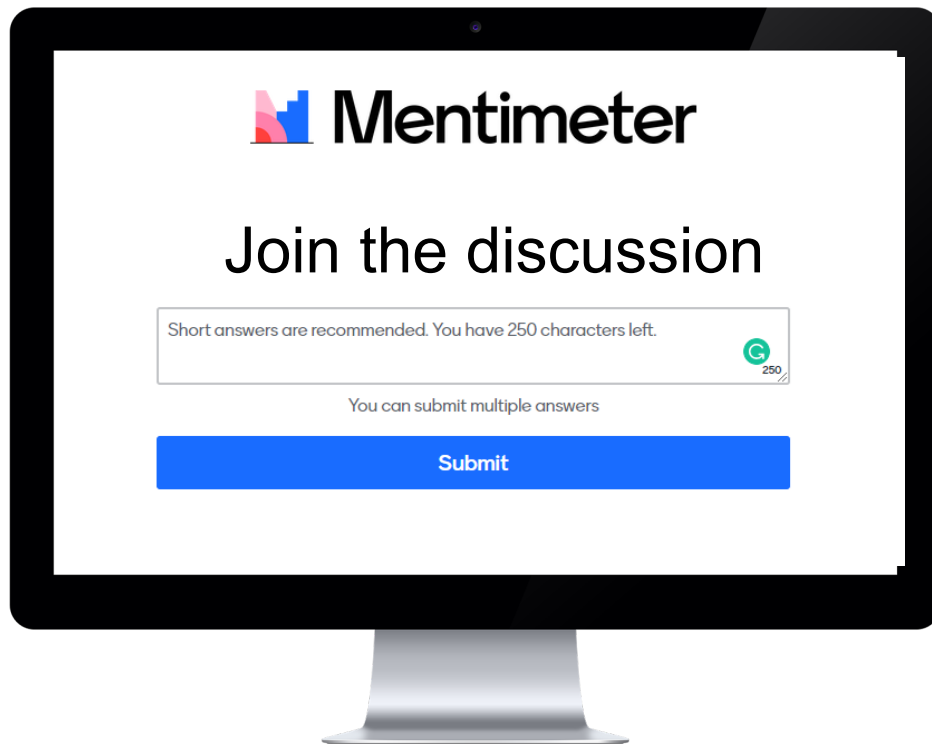
Discrimination

Incarceration

Social Cohesion



Mentimeter: Reflection 4



Go to:

www.menti.com

Enter Code:

8935 2981

Questions:

In what way can we provide services that impact this domain?

Economic Stability

Employment

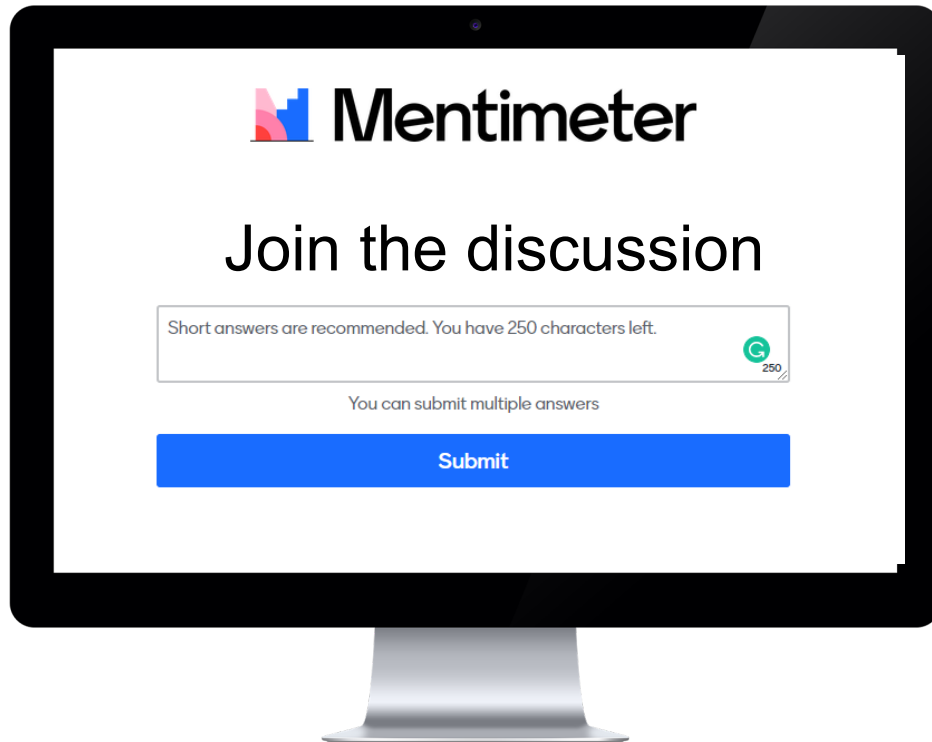
Food Insecurity

Housing Stability

Poverty



Mentimeter: Reflection 5



Go to:

www.menti.com

Enter Code:

8935 2981

Questions:

In what way can we provide services that impact this domain?



Discussion





Nicole Augustine

- ✓ Founder & CEO of RIZE Consultants
- ✓ Justice, Equity, Diversity & Inclusion (JEDI)
- ✓ Professional development for Prevention Specialist
- ✓ Strategic Planning



SCAN ME