



SAMHSA
Substance Abuse and Mental Health
Services Administration

TELLING THE STORY: WHAT DO YOU KNOW ABOUT UNDERAGE DRINKING IN YOUR STATE?

PTTC Region 5
August 30, 2023

ICCPUD

The Interagency Coordinating Committee on the Prevention of
Underage Drinking (ICCPUD)

CONTENT

- Why Focus on Alcohol?
- History & Background of the STOP Act
- Key Components of the State Reports
- Region 5 Data
- Talk, They Hear You (TTHY)
- Questions & Comments

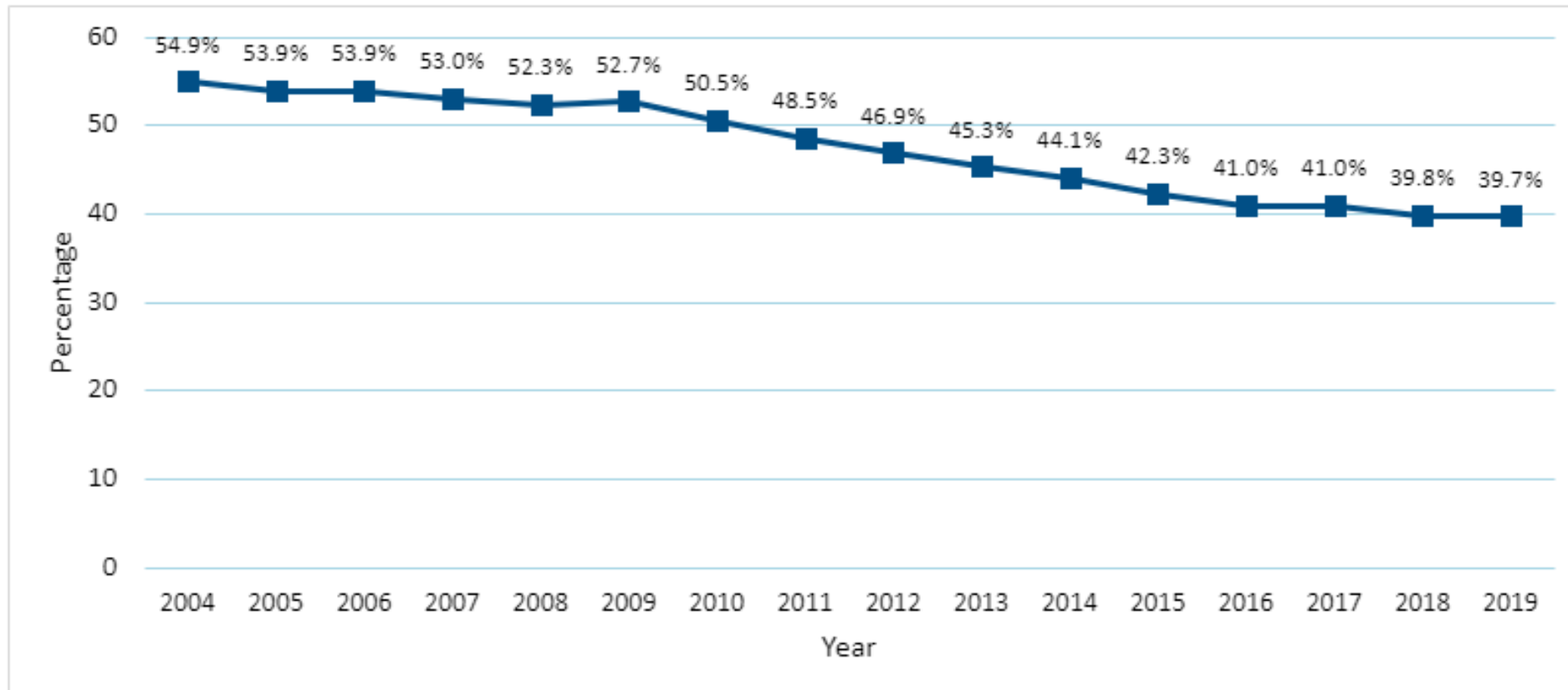


ICCPUD

WHY FOCUS ON ALCOHOL?

CONTINUING THE DOWNWARD TREND

Historical Trends in Lifetime Use of Alcohol by 12- to 20-Year-Olds:
2019 NSDUH Data (CBHSQ, 2020)





140,000

alcohol-attributable
deaths per year in the
United States



Alcohol is the
#1

Most used substance
among youth



15%

of youth started
drinking before the
age of 13

In 2010, a report estimated that the economic burden of alcohol.

Alcohol costs the United States

\$249 Billion

every year

ALCOHOL'S HARMS TO OTHERS

- *Physical, sexual, and psychological violence*
- *Property crimes*
- *Harms to fetuses from drinking by pregnant people*
- *Financial harms*
- *Crashes involving other drivers*
- *Child neglect and maltreatment*

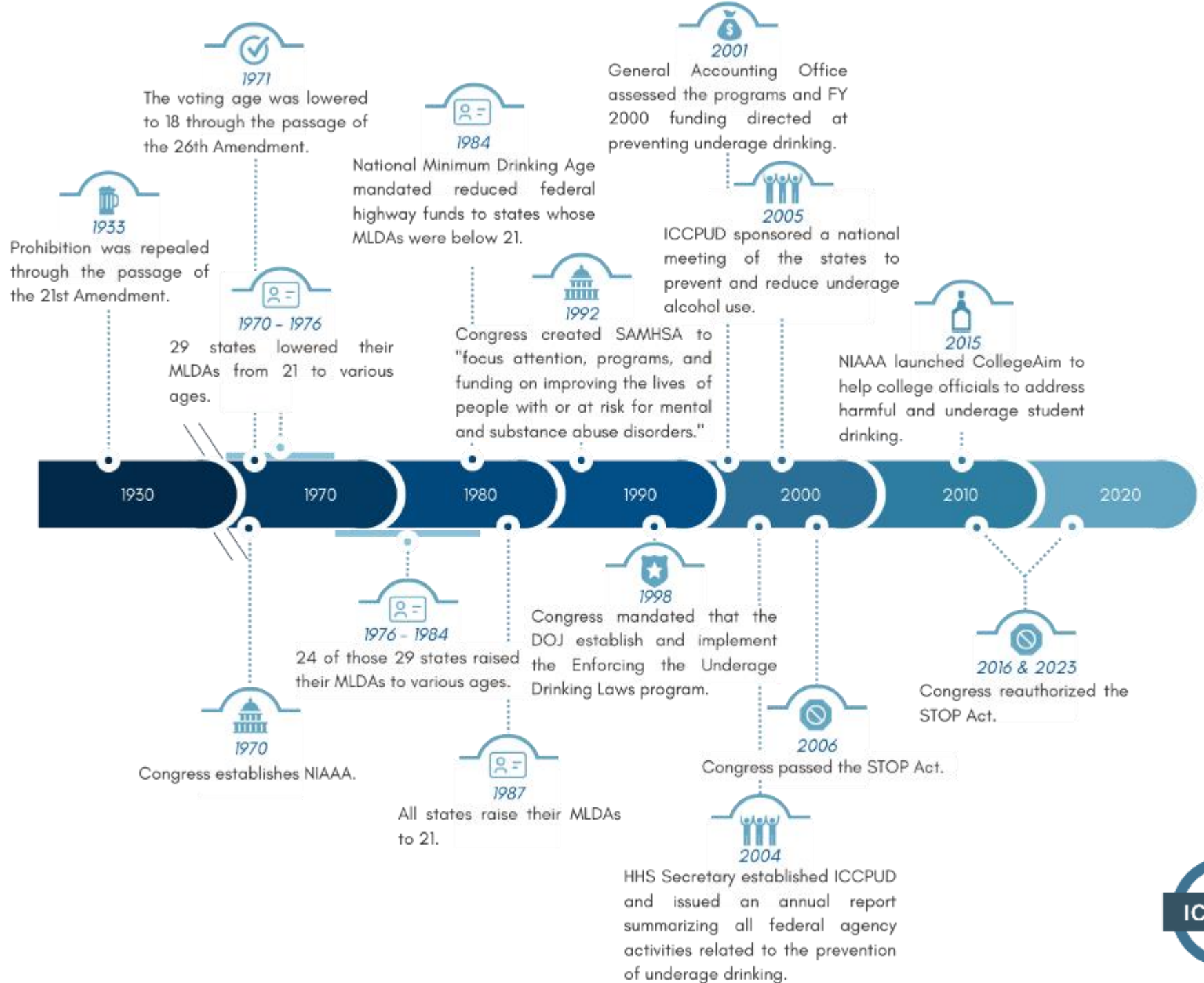


ICCPUD



HISTORY & BACKGROUND OF THE STOP ACT

BRIEF HISTORY



CONCEPTION OF THE STOP ACT

2006

Congress enacted the **Sober Truth on Preventing Underage Drinking (STOP) Act** (Public Law 109-422) to acknowledge that:

“A multi-faceted effort is needed to more successfully address the problem of underage drinking in the United States...”

“A coordinated approach to prevention, intervention, treatment, enforcement, and research is key to making progress.”

ICCPUD VISION

Provide national leadership in federal policy and programming to support state and community activities that prevent and reduce underage drinking

ICCPUD MISSION

Facilitate collaboration among the federal ICCPUD member agencies, state and local governments, private and public national organizations, and agencies with responsibility for the health, safety, and wellbeing of America's children and youth

Provide resources and information on underage drinking prevention, intervention, treatment, enforcement, and research



US Department of Health & Human Services

Provides effective health and human services and fosters sound, sustained advances in the sciences underlying medicine, public health, and social services.



Administration for Children & Families

Initiates programs that promote the economic and social well-being of children and families.



Centers for Disease Control & Prevention

Protects America from health, safety, and security threats, both foreign and in the U.S.



Indian Health Service

Provides federal health services to American Indians and Alaska Natives.



National Institute on Alcohol Abuse and Alcoholism

Improves diagnosis, prevention, and treatment of alcohol-related problems.



National Institute on Drug Abuse

Advances science on the causes and consequences of drug use and addiction and applies that knowledge to improve individual and public health.



Agency for Healthcare Research and Quality

Enhance the quality, appropriateness, and effectiveness of health care services and access to care.



Office of Population Affairs

Promotes health across the reproductive lifespan through evidence-based adolescent health and family planning services.



Office of Assistant Secretary for Planning and Evaluation

Principal advisory group to the United States Secretary of the Department of Health and Human Services on policy development.



Office of the Surgeon General

Provides Americans with the best scientific information available on how to improve their health and reduce the risk of illness and injury.



Substance Abuse and Mental Health Services Administration

Leads the nation in providing prevention, treatment, and recovery support services to communities.



Federal Trade Commission

Monitors alcohol advertising for deceptive practices, brings law enforcement actions as needed, and promotes alcohol industry compliance with self-regulatory commitments.



US Department of Defense

Prevents and reduces alcohol consumption by underage military personnel.



US Department of Justice

Supports states with implementing coordinated prevention and intervention programs.



US Department of Education

Provides financial assistance for activities that promote student health in elementary and secondary schools and higher education.



US Department of Transportation

Implements enforcement programs to reduce traffic crashes, including underage drinking and driving crashes.



US Department of Treasury

Prevents unfair and unlawful market activity for alcohol and tobacco products.



Office of National Drug Control Policy

Leads and coordinates the development, implementation, and assessment of U.S. drug policy.



US Department of Homeland Security

Protects the public, the environment, and U.S. economic interests.



PREVENTION OF UNDERAGE DRINKING

STOP ACT



ICCPUD and Annual Reports
ICCPUD
Community Engagement
Report to Congress
State Reports
State Performance & Best
Practices Report



National Media Campaign
“Talk. They Hear You.” helps
parents and caregivers address
alcohol and other drug use
with their children



Community-Based Coalition
Enhancement Grants
Provides annual grants to
community coalitions active
in underage
drinking prevention





STOP ACT PRODUCTS

2023
REPORT TO CONGRESS ON THE PREVENTION AND REDUCTION OF UNDERAGE DRINKING

2023
STATE PERFORMANCE & BEST PRACTICES FOR THE PREVENTION AND REDUCTION OF UNDERAGE DRINKING REPORT

2023
STATE REPORTS - UNDERAGE DRINKING PREVENTION AND ENFORCEMENT
REGION 7
LA, MO, NE, KS

2023
STATE REPORTS - UNDERAGE DRINKING PREVENTION AND ENFORCEMENT
IOWA



Report to Congress on the Prevention and Reduction of Underage Drinking

ICCPUD
The Interagency Collaborative Committee on the Prevention of Unintentional Injuries

Arkansas

SAMHSA
Substance Abuse and Mental Health Services Administration

This presentation draws on data contained in the 2023 Report to Congress on the Prevention and Reduction of Underage Drinking, the 2022 State Reports, and the 2022 State Performance & Best Practices for the Prevention and Reduction of Underage Drinking Report.





ICCPUD

STOP ACT STATE REPORT OVERVIEW

STATE REPORT: KEY COMPONENTS



Population &
Underage
Consumption
Data



Behavioral
Health and
Substance Use
Services



Alcohol Laws &
Policies



STOP Act
Survey Data



STATE POPULATION & UNDERAGE CONSUMPTION DATA

- Total State Population
- Population ages 12 – 20
- Number and percentage alcohol use and binge drinking by age
 - 12 – 20
 - 12 – 14
 - 15 – 17
 - 18 – 20
 - 21 +
- Average Age of Initiation
- Alcohol-Attributable Deaths (under 21)
- Years of Potential Life Lost (under 21)
- Fatal Crashes Involving a 15- to 20-Year-Old with BAC >.01%



STATE BEHAVIORAL HEALTH AND SUBSTANCE USE SERVICES

- State Provided Description of Services
- Expenditures for Substance Abuse Prevention and Treatment
 - Underage Drinking Prevention and Treatment Priority Number
 - Source of Expenditures Pie Chart



STATE ALCOHOL LAWS AND POLICIES

27

Alcohol Policies Tracked

Across

6

Different Categories



STATE ALCOHOL LAWS AND POLICIES cont'd

- **Underage Possession or Purchase of Alcohol**
 - Underage Possession
 - Underage Consumption
 - Underage Internal Possession
 - Underage Purchase and Attempted Purchase
 - Underage False Identification for Obtaining Alcohol
- **Underage Drinking and Driving**
 - Youth BAC
 - Loss of Driving Privileges for Alcohol Violations by Minors
 - Graduated Driver's Licenses
- **Alcohol Availability**
 - Furnishing Alcohol to Minors
 - Responsible Beverage Service
 - Minimum Age of Sellers of Alcohol – Off-Premises
 - Minimum Age of Sellers of Alcohol – On-Premises
 - Distance Limitations Applied to New Alcohol Outlets Near Universities, Colleges, and Primary and Secondary Schools
 - Dram Shop Liability
 - Social Host Liability
 - Prohibitions Against Hosting Underage Drinking Parties
 - Keg Registration
 - High-Proof Grain Alcohol Beverages
- **Sales and Delivery to Consumers at Home**
 - Retailer Interstate Shipments of Alcohol
 - Direct Shipments and Sales
 - Home Delivery
 - Direct to Consumer
- **Alcohol Pricing**
 - Alcohol Taxes
 - Low Price, High-Volume Drink Specials
 - Wholesaler Pricing Restrictions
- **Enforcement Policies**
 - Compliance Check Protocols
 - Penalty Guidelines for Sales to Minors

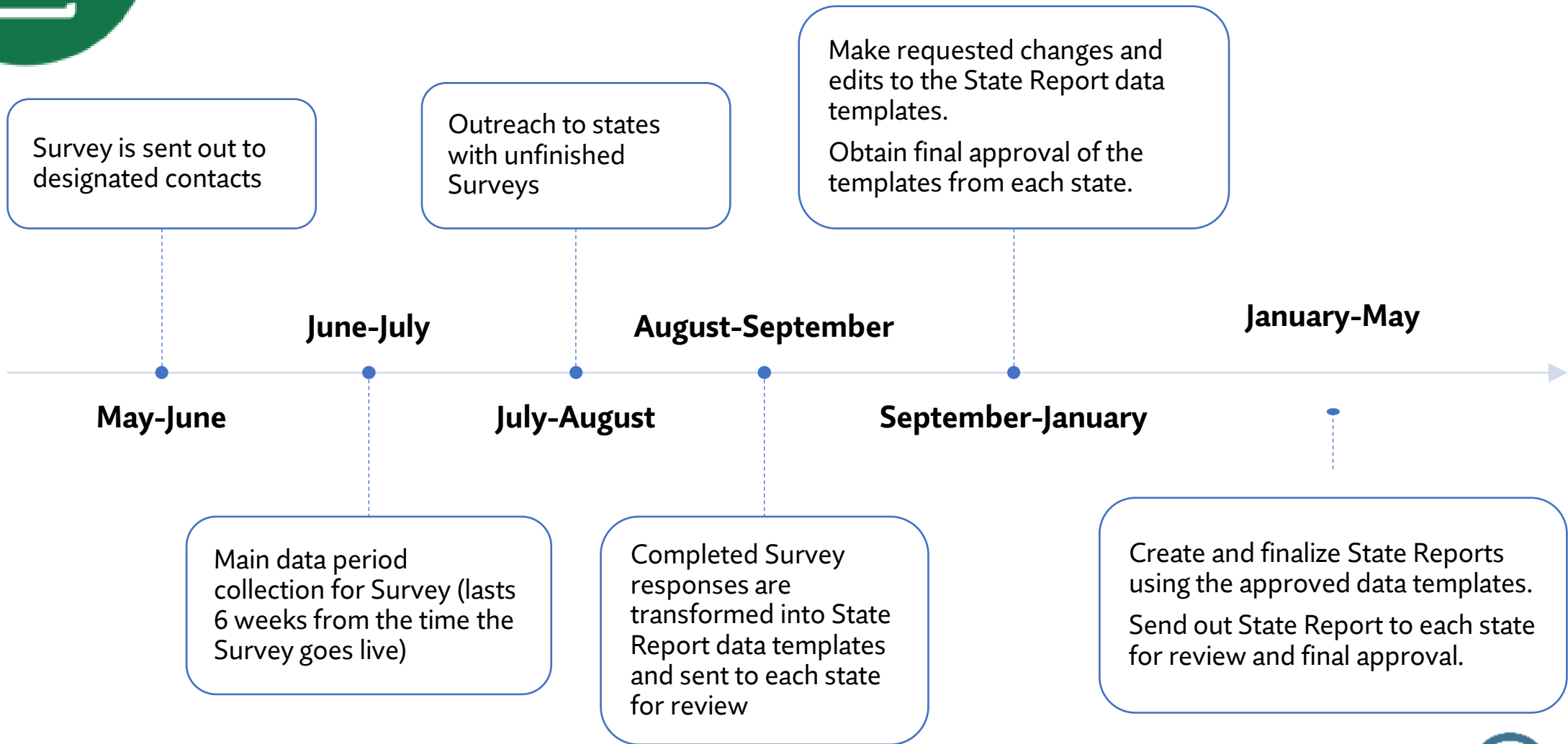


STOP ACT SURVEY DATA

- Who is the Survey data collected from?
 - Designated Survey contacts from all 50 states and D.C.
 - Primary contacts are often administrators, program specialists, epidemiologists, or heads of their state's mental and behavioral health departments, particularly divisions specific to drug and alcohol use
- What underage drinking related data does the STOP Act Survey collect?
 - Enforcement
 - Underage Drinking Prevention Programs Operated and Funded by the State
 - State Interagency Collaboration
 - Underage Drinking Reports
 - State Expenditures for the Prevention of Underage Drinking
 - Funds Dedicated to Underage Drinking



STOP ACT SURVEY DATA cont'd





ICCPUD



UNDERAGE DRINKING: REGION 5

THE STATES OF REGION 5



Illinois



Indiana



Michigan



Minnesota



Ohio



Wisconsin



ILLINOIS DATA

State Population & Underage Consumption

State Population: 12,582,032

Population Ages 12-20: 1,521,00

Past-Month Alcohol Use

Ages 12 – 20

Past-Month Alcohol Use – Number (Percentage)	259,000 (17.0%)
Past-Month Binge Alcohol Use – Number (Percentage)	140,000 (9.2%)

Ages 12 – 14

Past-Month Alcohol Use – Number (Percentage)	13,000 (2.5%)
Past-Month Binge Alcohol Use – Number (Percentage)	8,000 (1.6%)

Ages 15 – 17

Past-Month Alcohol Use – Number (Percentage)	104,000 (20.8%)
Past-Month Binge Alcohol Use – Number (Percentage)	* (*%)

Ages 18 – 20

Past-Month Alcohol Use – Number (Percentage)	143,000 (28.0%)
Past-Month Binge Alcohol Use – Number (Percentage)	65,000 (12.7%)

Adult Ages 21+

Past-Month Alcohol Use – Number (Percentage)	5,051,000 (55.0%)
Past-Month Binge Alcohol Use – Number (Percentage)	2,233,000 (24.3%)

* Estimate suppressed due to low statistical precision



ILLINOIS DATA cont'd

Average Age of Initiation	
Average Age of Initiation	16.3
Alcohol-Attributable Deaths and Years of Potential Life Lost Under the Age of 21	
Alcohol-Attributable Deaths (under 21)	179
Years of Potential Life Lost (under 21)	10,455
Fatal Crashes Involving a 15- to 20- Year-Old Driver With Blood Alcohol Concentration (BAC) >0.01	
Number of Fatalities Involving 15- to 20- Year-Old With BAC >0.01	42
Percentage of All Fatal Crashes Involving a 15- to 20-Year Old Driver	21%

** Estimate suppressed due to low statistical precision*



ILLINOIS

The average age of alcohol initiation is

16.3

years old

9.2%

of people aged 12 – 20 binge drank in the past 30 days

2.5%

of youth aged 12 – 14 drank alcohol in the past 30 days

CONSIDER THE WHY

Use the remaining three sections of the state report to learn more about environment and context:



Youth prevention education is the number one priority for use of SABG funds.

Are there state prevention programs can be strengthened?



Which of the six policy categories need to be strengthened?



Is there potential to increase the reach of underage drinking prevention programs operated or funded by the state?



INDIANA DATA

State Population & Underage Consumption

State Population: 6,833,037

Population Ages 12-20: 822,000

Past-Month Alcohol Use	
Ages 12 – 20	
Past-Month Alcohol Use – Number (Percentage)	81,000 (9.8%)
Past-Month Binge Alcohol Use – Number (Percentage)	44,000 (5.4%)
Ages 12 – 14	
Past-Month Alcohol Use – Number (Percentage)	* (*%)
Past-Month Binge Alcohol Use – Number (Percentage)	* (*%)
Ages 15 – 17	
Past-Month Alcohol Use – Number (Percentage)	3,000 (1.2%)
Past-Month Binge Alcohol Use – Number (Percentage)	* (*%)
Ages 18 – 20	
Past-Month Alcohol Use – Number (Percentage)	73,000 (27.9%)
Past-Month Binge Alcohol Use – Number (Percentage)	* (*%)
Adult Ages 21+	
Past-Month Alcohol Use – Number (Percentage)	2,514,000 (51.6%)
Past-Month Binge Alcohol Use – Number (Percentage)	1,070,000 (22.0%)

* Estimate suppressed due to low statistical precision



INDIANA DATA cont'd



Average Age of Initiation

Average Age of Initiation	16.8
---------------------------	------

Alcohol-Attributable Deaths and Years of Potential Life Lost Under the Age of 21

Alcohol-Attributable Deaths (under 21)	101
--	-----

Years of Potential Life Lost (under 21)	5,764
---	-------

Fatal Crashes Involving a 15- to 20- Year-Old Driver With Blood Alcohol Concentration (BAC) >0.01

Number of Fatalities Involving 15- to 20- Year-Old With BAC >0.01	20
---	----

Percentage of All Fatal Crashes Involving a 15- to 20-Year Old Driver	16%
---	-----



INDIANA

The average age of alcohol initiation is

16.8

years old

9.8%

of people aged 12 – 20 binge drank in the past 30 days

101

alcohol-attributable deaths for those under the age of 21

CONSIDER THE WHY

Use the remaining three sections of the state report to learn more about environment and context:



Preventing substance misuse among youth is the number five priority for use of SABG funds.

Are there state prevention programs can be strengthened?



Which of the six policy categories need to be strengthened?



Can enforcement statistics be improved?



MICHIGAN DATA

State Population & Underage Consumption

State Population: 10,034,113

Population Ages 12-20: 1,153,000

Past-Month Alcohol Use

Ages 12 – 20

Past-Month Alcohol Use – Number (Percentage)	186,000 (16.1%)
Past-Month Binge Alcohol Use – Number (Percentage)	111,000 (9.6%)

Ages 12 – 14

Past-Month Alcohol Use – Number (Percentage)	6,000 (1.5%)
Past-Month Binge Alcohol Use – Number (Percentage)	1,000 (0.3%)

Ages 15 – 17

Past-Month Alcohol Use – Number (Percentage)	40,000 (10.4%)
Past-Month Binge Alcohol Use – Number (Percentage)	23,000 (6.0%)

Ages 18 – 20

Past-Month Alcohol Use – Number (Percentage)	140,000 (36.7%)
Past-Month Binge Alcohol Use – Number (Percentage)	87,000 (22.7%)

Adult Ages 21+

Past-Month Alcohol Use – Number (Percentage)	4,222,000 (56.9%)
Past-Month Binge Alcohol Use – Number (Percentage)	1,929,000 (26.0%)



MICHIGAN DATA cont'd

Average Age of Initiation	
Average Age of Initiation	16.2
Alcohol-Attributable Deaths and Years of Potential Life Lost Under the Age of 21	
Alcohol-Attributable Deaths (under 21)	117
Years of Potential Life Lost (under 21)	6,636
Fatal Crashes Involving a 15- to 20- Year-Old Driver With Blood Alcohol Concentration (BAC) >0.01	
Number of Fatalities Involving 15- to 20- Year-Old With BAC >0.01	36
Percentage of All Fatal Crashes Involving a 15- to 20-Year Old Driver	22%



MICHIGAN

The average age of alcohol initiation is

16.2

years old

16.1%

of people aged 12 – 20 binge drank in the past 30 days

1.5%

of youth aged 12 – 14 drank alcohol in the past 30 days

CONSIDER THE WHY

Use the remaining three sections of the state report to learn more about environment and context:



Reducing childhood and underage drinking is priority number ten of SABG funds.

Are there state prevention programs can be strengthened?



Is there a policy that can help achieve decreased underage drinking?



Is there a way to gather more data on the programs the state funded or facilitated?



MINNESOTA DATA

State Population & Underage Consumption

State Population: 5,717,184

Population Ages 12-20: 700,000

Past-Month Alcohol Use

Ages 12 – 20

Past-Month Alcohol Use – Number (Percentage) * (*%)

Past-Month Binge Alcohol Use – Number (Percentage) * (*%)

Ages 12 – 14

Past-Month Alcohol Use – Number (Percentage) * (*%)

Past-Month Binge Alcohol Use – Number (Percentage) * (*%)

Ages 15 – 17

Past-Month Alcohol Use – Number (Percentage) * (*%)

Past-Month Binge Alcohol Use – Number (Percentage) * (*%)

Ages 18 – 20

Past-Month Alcohol Use – Number (Percentage) * (*%)

Past-Month Binge Alcohol Use – Number (Percentage) * (*%)

Adult Ages 21+

Past-Month Alcohol Use – Number (Percentage) 2,477,000 (60.4%)

Past-Month Binge Alcohol Use – Number (Percentage) 1,151,000 (28.0%)

* Estimate suppressed due to low statistical precision



MINNESOTA DATA cont'd

Average Age of Initiation	
Average Age of Initiation	*
Alcohol-Attributable Deaths and Years of Potential Life Lost Under the Age of 21	
Alcohol-Attributable Deaths (under 21)	48
Years of Potential Life Lost (under 21)	2,815
Fatal Crashes Involving a 15- to 20- Year-Old Driver With Blood Alcohol Concentration (BAC) >0.01	
Number of Fatalities Involving 15- to 20- Year-Old With BAC >0.01	7
Percentage of All Fatal Crashes Involving a 15- to 20-Year Old Driver	12%

** Estimate suppressed due to low statistical precision*



MINNESOTA

The average age of alcohol initiation is

16.8

years old

12%

Of all fatal crashes involving a 15- to 20-year-old driver with BAC >0.01%

CONSIDER THE WHY

Use the remaining three sections of the state report to learn more about environment and context:



Reducing the 30-day alcohol use rate among youth is priority number four for use of SABG funds.

Are there state prevention programs can be strengthened?



How are state and local policies impact the environment of underage drinking?



Are there ways to gather more data on high-risk populations?



OHIO DATA

State Population & Underage Consumption

State Population: 11,756,058

Population Ages 12-20: 1,391,000

Past-Month Alcohol Use	
Ages 12 – 20	
Past-Month Alcohol Use – Number (Percentage)	286,000 (20.5%)
Past-Month Binge Alcohol Use – Number (Percentage)	169,000 (12.1%)
Ages 12 – 14	
Past-Month Alcohol Use – Number (Percentage)	13,000 (2.8%)
Past-Month Binge Alcohol Use – Number (Percentage)	7,000 (1.4%)
Ages 15 – 17	
Past-Month Alcohol Use – Number (Percentage)	59,000 (13.1%)
Past-Month Binge Alcohol Use – Number (Percentage)	36,000 (8.0%)
Ages 18 – 20	
Past-Month Alcohol Use – Number (Percentage)	213,000 (*%)
Past-Month Binge Alcohol Use – Number (Percentage)	* (*%)
Adult Ages 21+	
Past-Month Alcohol Use – Number (Percentage)	4,859,000 (56.8%)
Past-Month Binge Alcohol Use – Number (Percentage)	2,424,000 (28.4%)

* Estimate suppressed due to low statistical precision



OHIO DATA cont'd



Average Age of Initiation

Average Age of Initiation	16.9
---------------------------	------

Alcohol-Attributable Deaths and Years of Potential Life Lost Under the Age of 21

Alcohol-Attributable Deaths (under 21)	151
--	-----

Years of Potential Life Lost (under 21)	8,790
---	-------

Fatal Crashes Involving a 15- to 20- Year-Old Driver With Blood Alcohol Concentration (BAC) >0.01

Number of Fatalities Involving 15- to 20- Year-Old With BAC >0.01	52
---	----

Percentage of All Fatal Crashes Involving a 15- to 20-Year Old Driver	29%
---	-----



OHIO

The average age of alcohol initiation is

16.9

years old

12.1%

of people aged 12 – 20 binge drank in the past 30 days

2.8%

of youth aged 12 – 14 drank alcohol in the past 30 days

CONSIDER THE WHY

Use the remaining three sections of the state report to learn more about environment and context:



Ensuring availability of prevention services to families and adolescents as the number three priority for use of SABG funds.

Are there state prevention programs can be strengthened?



What policies can be implemented to support this priority?



Is there a way to gather more data on the programs the state funded or facilitated program?



WISCONSIN DATA

State Population & Underage Consumption

State Population: 5,829,539

Population Ages 12-20: 662,000

Past-Month Alcohol Use

Ages 12 – 20

Past-Month Alcohol Use – Number (Percentage)	138,000 (20.9%)
Past-Month Binge Alcohol Use – Number (Percentage)	81,000 (12.2%)

Ages 12 – 14

Past-Month Alcohol Use – Number (Percentage)	* (*%)
Past-Month Binge Alcohol Use – Number (Percentage)	* (*%)

Ages 15 – 17

Past-Month Alcohol Use – Number (Percentage)	40,000 (16.5%)
Past-Month Binge Alcohol Use – Number (Percentage)	20,000 (8.4%)

Ages 18 – 20

Past-Month Alcohol Use – Number (Percentage)	83,000 (41.2%)
Past-Month Binge Alcohol Use – Number (Percentage)	54,000 (26.7%)

Adult Ages 21+

Past-Month Alcohol Use – Number (Percentage)	2,767,000 (63.5%)
Past-Month Binge Alcohol Use – Number (Percentage)	1,317,000 (30.2%)

* Estimate suppressed due to low statistical precision



WISCONSIN DATA cont'd

Average Age of Initiation

Average Age of Initiation	16.2
---------------------------	------

Alcohol-Attributable Deaths and Years of Potential Life Lost Under the Age of 21

Alcohol-Attributable Deaths (under 21)	61
--	----

Years of Potential Life Lost (under 21)	3,581
---	-------

Fatal Crashes Involving a 15- to 20- Year-Old Driver With Blood Alcohol Concentration (BAC) >0.01

Number of Fatalities Involving 15- to 20- Year-Old With BAC >0.01	14
---	----

Percentage of All Fatal Crashes Involving a 15- to 20-Year Old Driver	14%
---	-----



WISCONSIN

The average age of alcohol initiation is

16.2

years old

12.2%

of people aged 12 – 20 binge drank in the past 30 days

61

alcohol-attributable deaths for those under the age of 21

CONSIDER THE WHY

Use the remaining three sections of the state report to learn more about environment and context:



Reducing adult and youth binge drinking is priority number five for use of SABG fund. Are there state prevention programs can be strengthened?



Which of the six policy categories need to be strengthened?



How can better data be gathered on state programs to assess their impact?



ICCPUD



TALK, THEY HEAR YOU

moment to talk about alcohol.

TTHY: CAMPAIGN OVERVIEW

— and when — to begin the conversation, visit:



National Adult Oriented Campaign

GET INFORMED. BE PREPARED. TAKE ACTION.



**Parents &
Caregivers**



**Schools &
Educators**



**Community
Members**



NATIONAL MEDIA CAMPAIGN GOALS



#1

Get
Informed

Increase **awareness of the prevalence and risk** of underage drinking and other drug use

#2

Be
Prepared

Equip parents' educators, and communities with the **knowledge, skills, and confidence** to prevent underage drinking and other drug use; and

#3

Take
Action

Increase **actions to prevent underage drinking and other drug use.**



DISCUSSION STARTER VIDEOS



Parents/Caregivers



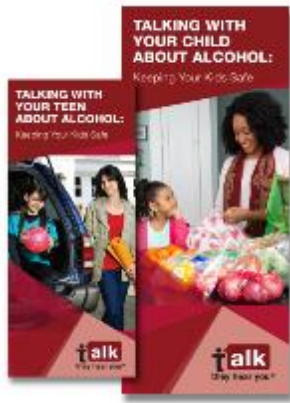
Student Assistance and Schools



Community

Purpose: For your next community event, these videos will prompt conversation and help inspire adults to play a greater role in underage drinking and substance use prevention. These videos showcase a variety of situations with parents and caregivers, student assistance professionals, administrators, educators, community members, and other adult role models in children's lives.

TTHY PRODUCTS, cont'd



Brochures



Fact Sheets



Posters



Discussion Starter Video



Print PSAs



TV PSAs



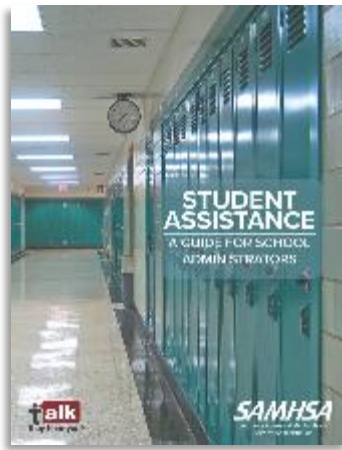
Spanish Materials



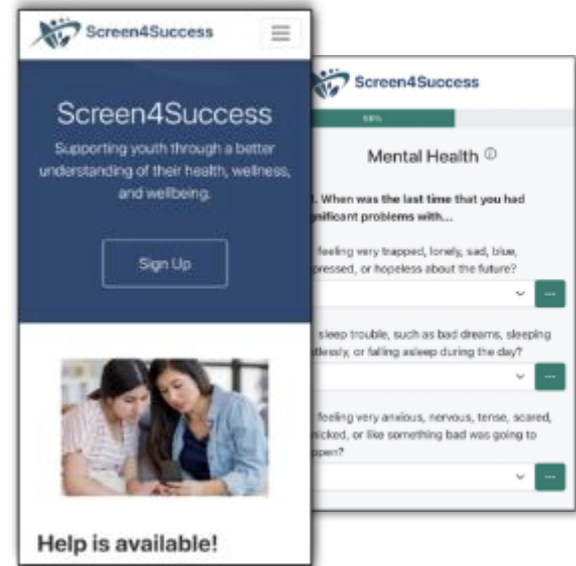
TALK THEY HEAR YOU PRODUCTS



Mobile App



Student Assistance Guide and Webinar Series



Screen4Success



Podcast



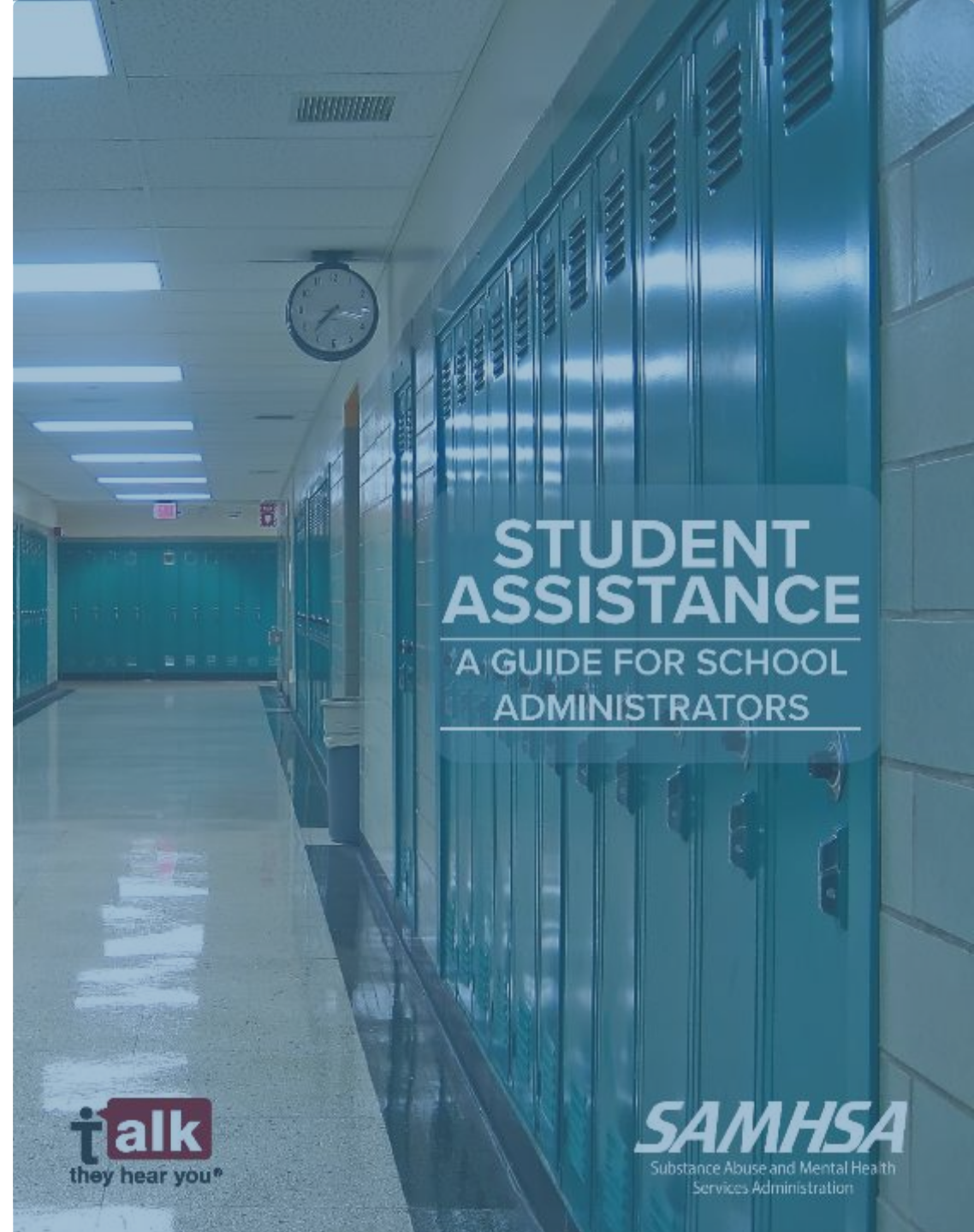
Parents' Night Out



STUDENT ASSISTANCE SERVICES

For student-assistance services to be as effective as possible, researchers have identified several program components that are critical to providing necessary services and reducing barriers to learning:

- School board policy
- Staff development
- Program awareness
- Internal referral process
- Problem-solving team and case management
- Direct services to students
- Cooperation and collaboration
- Integration with other school-based programs
- Program evaluation and improvement



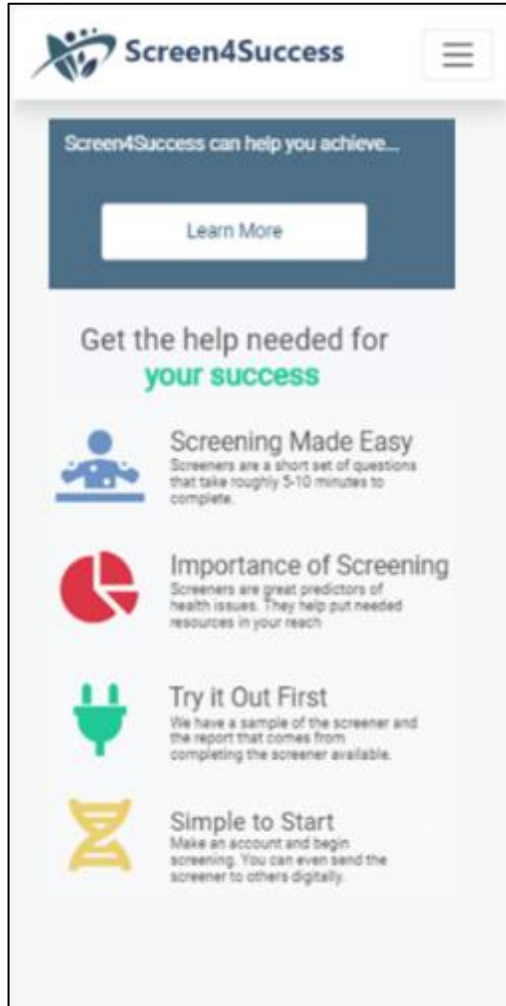
**STUDENT
ASSISTANCE**
A GUIDE FOR SCHOOL
ADMINISTRATORS

talk
they hear you®

SAMHSA
Substance Abuse and Mental Health
Services Administration



SCREENING AS A PREVENTION STRATEGY



- Early and periodic screening is widely recognized as one of the best ways to prevent the progression of more severe disease states in general and substance use specifically.
- Screening often focuses on one disease at a time. However, this can create a high burden when trying to screen a larger population, which leads to multidimensional screening for multiple things at a time.
- The results may identify strengths and areas to build on, early misuse that may only require brief intervention, and/or the need to refer for (hopefully early) intervention in one or more areas.



SAMHSA
Substance Abuse and Mental Health
Services Administration

THANK YOU & QUESTIONS

Rob Vincent

robert.vincent@samhsa.hhs.gov

ICCPUD

The Interagency Coordinating Committee on the Prevention of Underage Drinking (ICCPUD)

ICCPUD