



Southeast (HHS Region 4)

PTTC

Prevention Technology Transfer Center Network
Funded by Substance Abuse and Mental Health Services Administration

Health Equity Series 2: Cultural Intersections: LGBTQ+ Youth and Substance Use Disorder

August 9, 2023

Presented by

Leslie Dill

OPT Out, Carolinas CARE Partnership

Carlton Hall

Carlton Hall Consulting





Southeast (HHS Region 4)

PTTC

Prevention Technology Transfer Center Network

Funded by Substance Abuse and Mental Health Services Administration

Disclaimer

- This training is 100% supported SAMHSA of the U.S. Department of Health and Human Services (HHS).
- The contents are those of the author(s) and do not necessarily represent the official views of, nor an endorsement, by SAMHSA/HHS, or the U.S. Government.

The use of affirming language inspires hope.

LANGUAGE MATTERS.

Words have power.

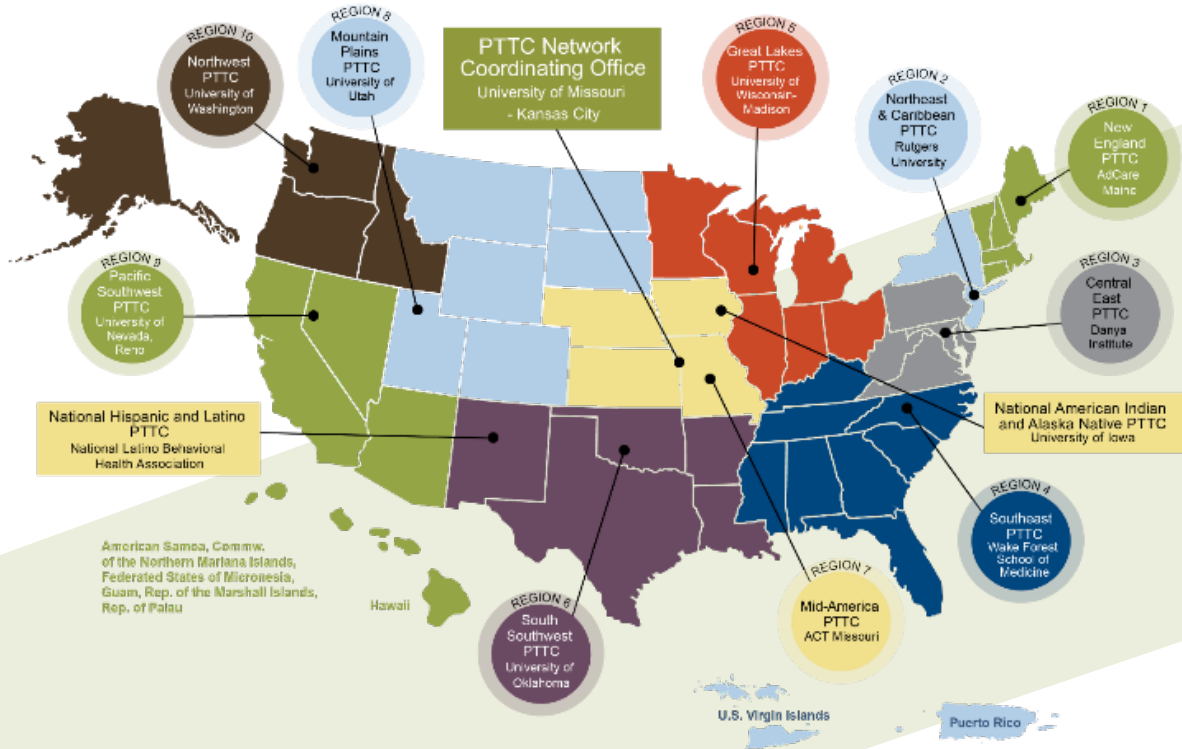
===== **PEOPLE FIRST.** =====

The PTTC Network uses affirming language to promote the application of evidence-based and culturally informed practices.



PTTC Prevention Technology Transfer Center Network
 Funded by Substance Abuse and Mental Health Services Administration

PTTC Network



Co-Directors
 Kimberly Wagoner, DrPH, MPH
 and Mark Wolfson, PhD



Wake Forest University
School of Medicine

Housekeeping

**Webinar
Recording**
available in 2-3
days on our
You Tube

After the webinar:

Complete the
Evaluation Form



to gain access to

A download of the
**Certificate of
Attendance**



Southeast (HHS Region 4)

PTTC

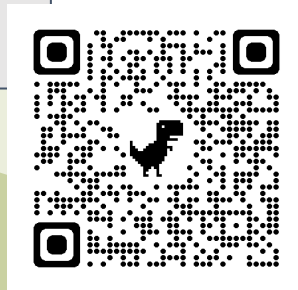
Prevention Technology Transfer Center Network
Funded by Substance Abuse and Mental Health Services Administration

**Bottom of our main
webpage**

pttcnetwork.org/southeast

The screenshot shows a green banner with two dark green call-to-action boxes. The left box is titled "JOIN OUR EMAIL LIST" and includes the text "Stay up to date on what's happening in our region." and a "SUBSCRIBE" button with a person icon. The right box is titled "WATCH OUR YOUTUBE CHANNEL" and includes the text "Watch our entire webinar series and subscribe for future episodes." and a "WATCH" button with a hand cursor icon.

Sign up for our
newsletter
here!



TONS of great
trainings to
share/watch
with your
coalition
members

Upcoming Events

The Georgia School of Addiction
Studies, Savannah, GA
thegeorgiaschool.org

27-31 August

20th September, Noon ET

*Health Equity Series Session 3:
Equity, Inclusion, and Prevention:
A Rural and Appalachian
Conversation*

Today's Presenters



Cultural Intersections

LGBTQ Youth and Substance Use Disorders

Part 2 of 3



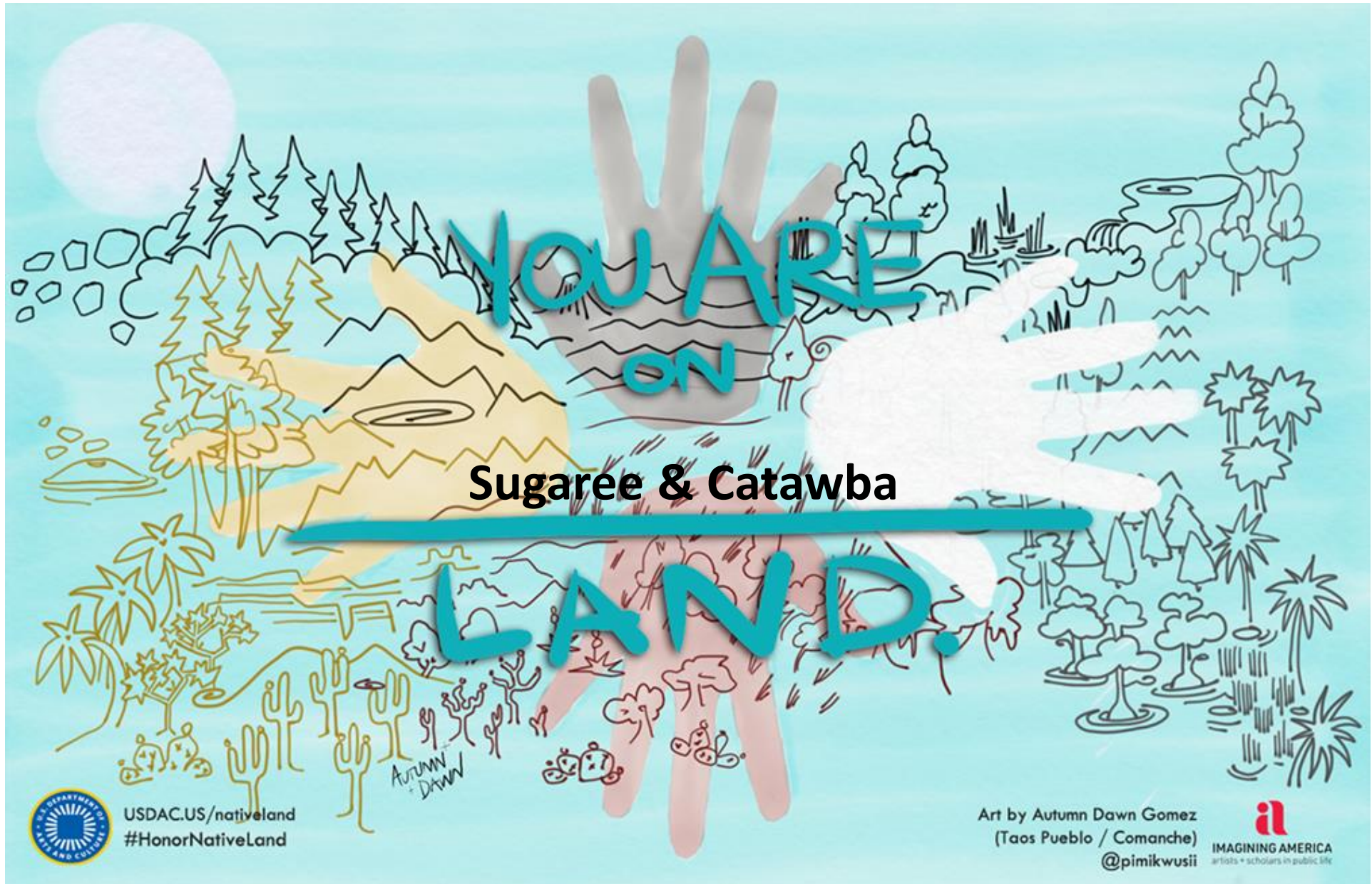
Inspiring Solutions for a Better World

Welcome



Leslie Dill (she/her) MAEd, CHES

- Gastonian
- ECU alum
- Shih Tzu mom
- UNC Charlotte
- Charlotte Roller Derby blocker
- TedX speaker
- Sexual health educator
- NCSHTC cadre member
- Data Analyst Manager for MCHD
- Golden Girls enthusiast
- OPT Out Program Manager
- Relationship builder



Sugaree & Catawba



It's also National Women's Day!

• Intersections – A Three-Part Series

Many minority populations are disproportionately affected by substance use disorders and the LGBTQ community is no different. We will use data to take a look at how LGBTQ youth and young adults are effected by substance use disorder and offer some strategies to combat this issue. You will also learn some new ways to engage LGBTQ youth and young adults in your work!

• Cultural Intersections – LGBTQ Youth and Substance Use Disorders



Learning Outcomes

- Better understand why LGBTQ youth are disproportionately affected by substance use disorders.
- Learn some new ways that we are trying to reach LGBTQ youth to engage them in prevention and harm reduction related to substance use disorders!
- Understand the difference between gender identity, gender expression, sexual identity, and sex assigned at birth and how they are all very separate and important concepts.
- Identify three ways that you can show community members, that you may interact with, that you are supportive of diversity – without saying it.

Queer



Let's break it all down the L, G, B, T, and Q!



Pants...



Gender
Identity –

How you feel
about what is
in your pants.

Pants...



Gender
Expression –

How you wear
your pants.

Pants...



Gender
assigned at
birth –

What was in
your pants.

Pants...



Sexual
Orientation –

Whose pants
do you want
to get in to 😊

Why are LGBTQIA+ youth more likely to experience a substance use disorder than their cis/het peers?

Feel free to speak or drop your thoughts in the chat!



Inspiring Solutions for a Better World



Early Adversity has Lasting Impacts





(THAT'S NEARLY 15 MILLION PEOPLE)

**OF THEM, 1/3 EXPERIENCE A MENTAL ILLNESS
(60% MORE THAN HETEROSEXUALS)**



AND ARE 2-3x MORE LIKELY TO HAVE LONG-TERM PSYCHOLOGICAL OR EMOTIONAL PROBLEMS

REGULARLY FACING PREJUDICE, HARASSMENT, & DISCRIMINATION

WHICH CAUSES SERIOUS ISSUES WITHIN THE LGBTQ+ POPULATION...



TRANSGENDER PEOPLE ATTEMPT SUICIDE 9x MORE THAN THE ENTIRE US POPULATION,



LGBTQ+ ADULTS ARE 56% MORE LIKELY TO DEVELOP AN ALCOHOL USE DISORDER,



AND ALMOST 3X AS LIKELY TO DEVELOP ANOTHER SUBSTANCE USE DISORDER.

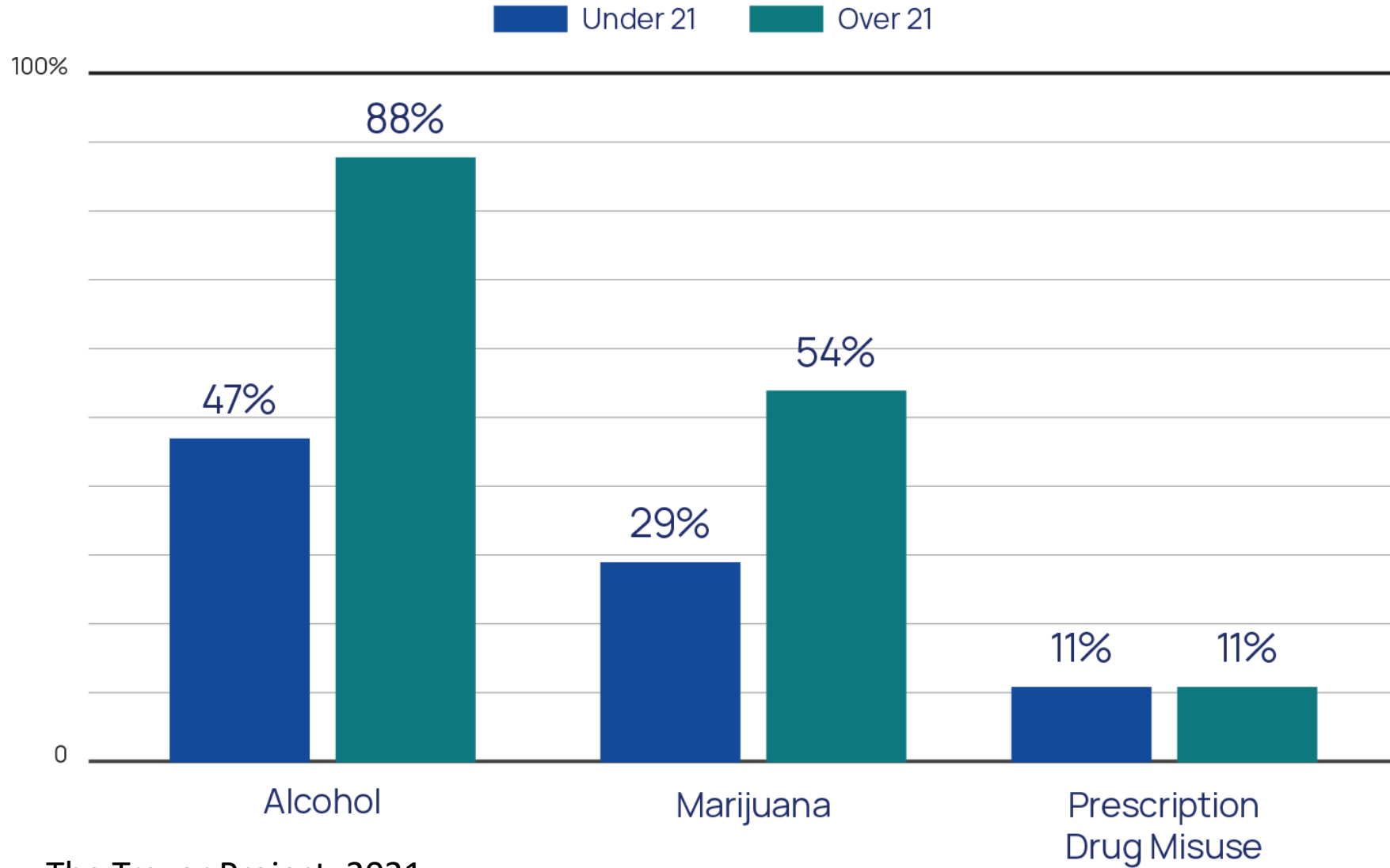


SOURCES:

<https://news.gallup.com/poll/234863/estimate-lgbt-population-rises.aspx>
<https://link.springer.com/article/10.1007%2Fs11606-014-2905-y>

<https://transequality.org/sites/default/files/docs/usts/USTS-Full-Report-Dec17.pdf>
<https://www.samhsa.gov/data/sites/default/files/NSDUH-SexualOrientation-2015/NSDUH-SexualOrientation-2015/NSDUH-SexualOrientation-2015.htm>

Substance Use in the Last Year Among LGBTQ Youth



The Trevor Project, 2021

What are some examples of protective factors for youth?

Person-Centered & Trauma-Informed – Show Us Your Intake



- Cohort 1 – within Task Force
- Cohort 2 – broader community
- Surveys
- Decrease barriers
- Pre-made policy
- Levels of engagement:
 - Suggestions
 - Review
- Large-scale media campaign

Community Services – Brave Space

- Cohort 1 – pilot
- Cohort 2 – broader community
- Collaboration with Time OUT Youth and Charlotte-Mecklenburg Schools
- Website mentions
- Use of logo

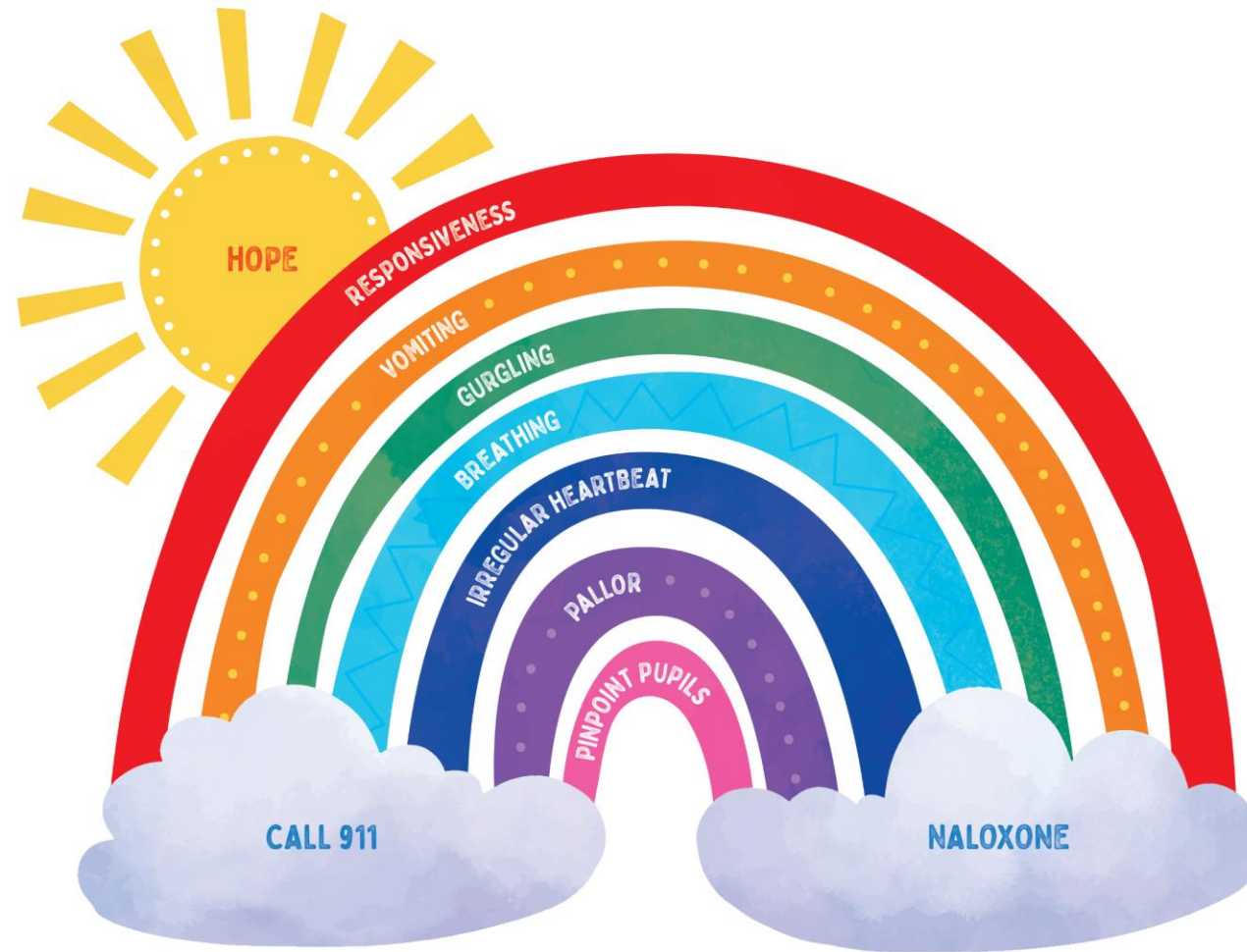


Youth engagement...

- Q Chat Space
- GSA relationships
- Communities in Schools
- Art contest



Reimagining the Rainbow Campaign



Making YOUR space inclusive....

- In the news....
- Stickers/Buttons
- Pronouns
- Art
- Flags
- Language
- Blurb in your syllabus



Diversity Statement

No student will be discriminated against in the class based upon age, race, nationality, religion, sexual orientation/gender expression, country of origin, or group affiliation. Likewise all participants in this class will be expected to respect other members of this class who fall into these (and any other not mentioned) categories. Any student who does not behave in a respectful manor with his classmates and professor will be withdrawn from the class immediately. No exceptions will be made to this rule. I am a participant in the UNCC Safe Zone program to ensure that my class is safe and affirming for LGBTQ students. If you have any questions or concerns, please do not hesitate to ask me after class.

- Trauma is the gateway drug
- LGBTQ youth are disproportionately affected by SUD
- Talk about it!
- There are things you can do to help!



KEY TAKEAWAYS



Resources

- Search for SUD resources - <https://www.shatterproof.org/>
- The Trevor Project – <https://www.thetrevorproject.org/survey-2022/>
- HRC – <https://www.hrc.org/>
- Healthy Life Recovery - <https://healthyliferecovery.com/mental-health-addiction-in-lgbtq/>

Contact US



<http://carltonhallconsulting.com/>



contact@carltonhallconsulting.com



(267) 773 - 6444



P.O. Box 25250, Philadelphia, PA 19119

THANK YOU!

*Presentation by CHC LLC. ©2020
All Rights Reserved*



Inspiring Solutions for a Better World

Q&A

Evaluation link



<https://ttc-gpra.org/P?s=402781>



Southeast (HHS Region 4)

PTTC

Prevention Technology Transfer Center Network
Funded by Substance Abuse and Mental Health Services Administration

The purpose of the Prevention Technology Transfer Center (PTTC) Network is to improve implementation and delivery of effective substance abuse prevention interventions, and provide training and technical assistance services to the substance abuse prevention field.

Address for the listserv is

<https://lp.constantcontactpages.com/su/OaIT5aj/SignUp>



Join our Email List Here

CONNECT WITH US



southeast@pttcnetwork.org



Pttcnetwork.org/southeast