

Peer Learning Session Supporting Immigrant, Refugee, and Asylum- Seeking Individuals Through Prevention

November 17, 2023



South Southwest (HHS Region 6)

PTTC

Prevention Technology Transfer Center Network
Funded by Substance Abuse and Mental Health Services Administration

Acknowledgement

This presentation was prepared for the South Southwest Prevention Technology Transfer Center (PTTC) Network under a cooperative agreement from the Substance Abuse and Mental Health Services Administration (SAMHSA). All material appearing in this publication, except that taken directly from copyrighted sources, is in the public domain and may be reproduced or copied without permission from SAMHSA or the authors. Citation of the source is appreciated. Do not reproduce or distribute this publication for a fee without specific, written authorization from the South Southwest Prevention Technology Transfer Center. For more information on obtaining copies of this publication, contact us at pttc6@ou.edu.

At the time of this publication, Miriam E. Delphin-Rittmon, Ph.D, served as Assistant Secretary for Mental Health and Substance Use in the U.S. Department of Health and Human Services and the Administrator of the Substance Abuse and Mental Health Services Administration.

The opinions expressed herein are the view of PTTC Network and do not reflect the official position of the Department of Health and Human Services (DHHS), SAMHSA. No official support or endorsement of DHHS, SAMHSA, for the opinions described in this document is intended or should be inferred.

This work is supported by grants 6UR1TI08205-02M002, SM081726 and 1H79SP081006-01 from the Department of Health and Human Services, Substance Abuse and Mental Health Services Administration.



South Southwest (HHS Region 6)

PTTC

Prevention Technology Transfer Center Network
Funded by Substance Abuse and Mental Health Services Administration

Facilitator



Derrick Newby, CPC
South Southwest
Prevention Technology and Transfer Center (SSW PTTC)
Training and Technical Assistance Specialist



South Southwest (HHS Region 6)

PTTC

Prevention Technology Transfer Center Network
Funded by Substance Abuse and Mental Health Services Administration

Learning Objectives



Analyze the challenges immigrant populations face related to substance misuse.



Describe the role of prevention professionals when working with migrant populations to improve community conditions.



Identify workforce development resources that are available when serving these individuals and families.



South Southwest (HHS Region 6)

PTTC

Prevention Technology Transfer Center Network
Funded by Substance Abuse and Mental Health Services Administration



Our Roadmap Today

- ✓ Unanswered questions
- ✓ The role of prevention
- ✓ Moving to action

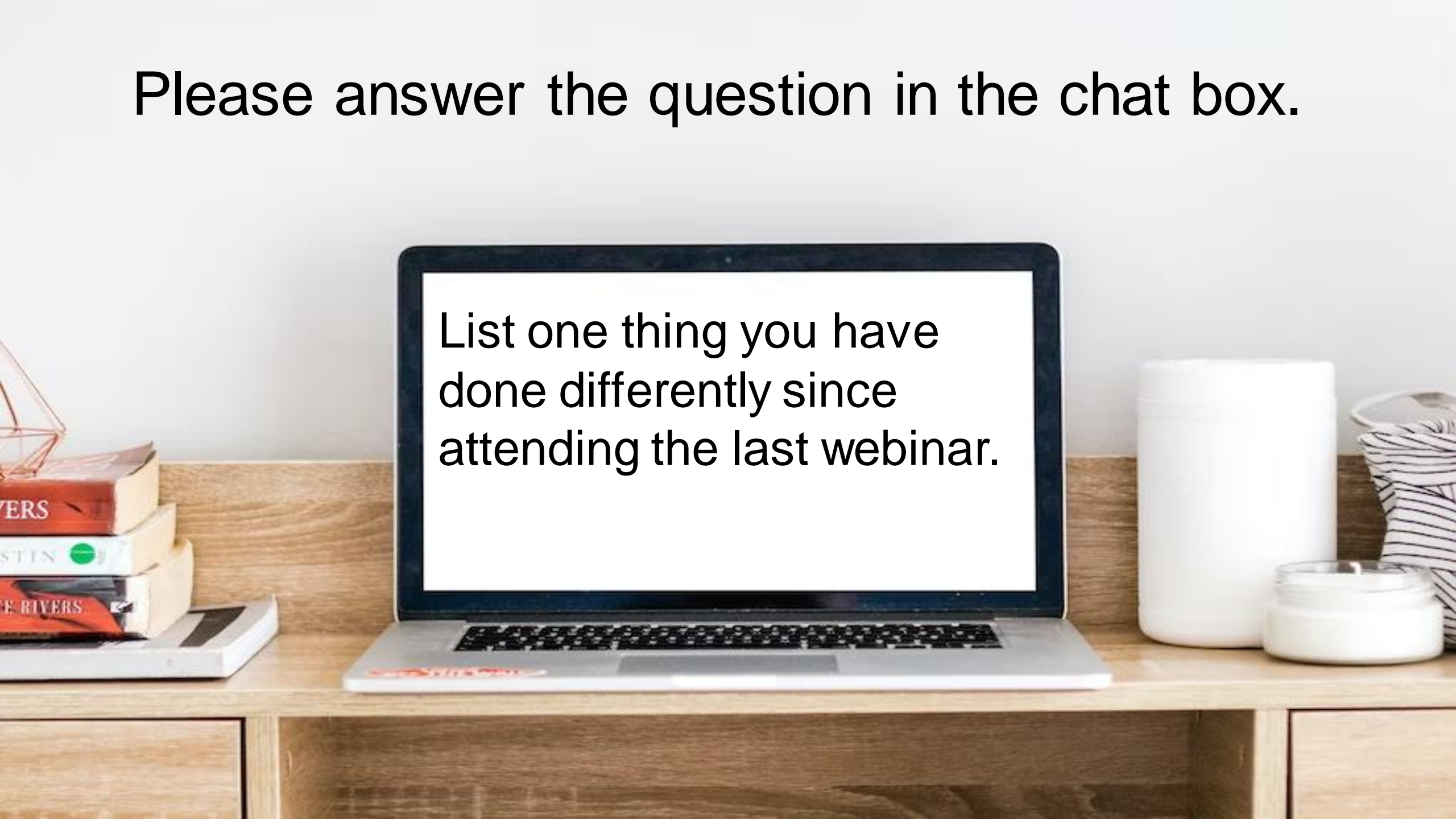


South Southwest (HHS Region 6)

PTTC

Prevention Technology Transfer Center Network
Funded by Substance Abuse and Mental Health Services Administration

Please answer the question in the chat box.



List one thing you have done differently since attending the last webinar.

Questions from Session 1



The Refugee and Immigrant Support and Empowerment (R.I.S.E.)

The RISE program aims to foster a sense of belonging among immigrant and refugee families.



Source: <https://capservices.org/what-we-do/>

What is the role of the prevention professional?

- Understand migration trends
- Collaborate with local partners
- Provide support
- Adapt existing prevention resources



South Southwest (HHS Region 6)

PTTC

Prevention Technology Transfer Center Network
Funded by Substance Abuse and Mental Health Services Administration

Take Action

Action Steps for Prevention Practitioners To Engage Immigrant, Refugee, and Asylum Seeking Individuals

Take Action!

This resource highlights the actions that the prevention workforce can take to support immigrant, refugee and asylum seeking individuals living in their communities.

More than 1 billion people globally are immigrants, refugees, and migrants.¹ These individuals face challenges including economic, social, and other obstacles to health and healthcare.

¹ Centers for Disease Control and Prevention, [Immigrant, Refugee, and Migrant Health](#).

Determine Who is in Your Community

- ❑ Review regional and local data on immigrants, refugees, and asylum seekers. The Homeland Security [Yearbook of Immigration Statistics](#) is a great place to start.
- ❑ Download state immigration data profiles compiled by the [Migration Policy Institute](#).

Assess the Key Challenges

- ❑ Learn all you can about [Immigrant, Refugee, and Migrant Health](#). The CDC is a key resource.
- ❑ Learn about [challenges, opportunities, and best practices](#) for interviewing local individuals with lived experience.

Consider Partners and Existing Efforts

- ❑ Identify agencies such as the [Refugee Council USA](#) and local partners already providing services and creating welcoming



What is working in your community to improve services for immigrants?

What is NOT working?



South Southwest (HHS Region 6)

PTTC

Prevention Technology Transfer Center Network
Funded by Substance Abuse and Mental Health Services Administration



Action Steps

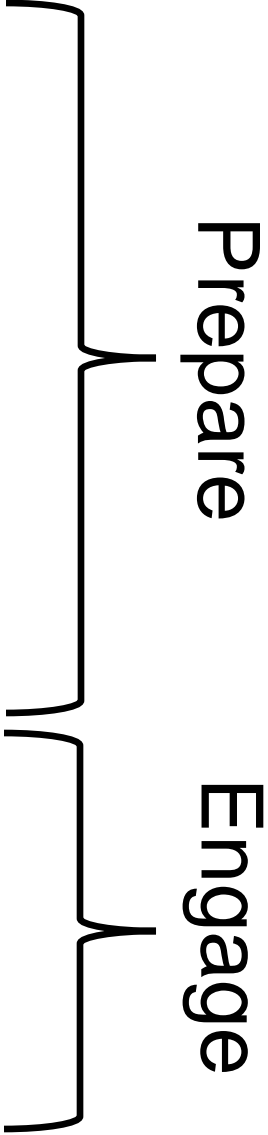
1 Determine Who is in Your Community

2 Assess the Key Challenges

3 Consider Partners and Existing Efforts

4 Identify and/or Adapt Programs

5 Conduct Culturally-Responsive Evaluation



What is working in your community to improve early access to prevention interventions for youth?



South Southwest (HHS Region 6)

PTTC

Prevention Technology Transfer Center Network
Funded by Substance Abuse and Mental Health Services Administration

1

Determine Who is In Your Community

Arkansas
2021

Foreign-Born

4.7%

142,988

Place of Birth

Africa.....	3.1%
Asia.....	22.5%
Europe.....	7.4%
Latin America.....	60.9%
Northern America.....	1.0%
Oceania.....	5.1%



Source: Migration Policy Institute

1

Determine Who is In Your Community

New
Mexico
2021

Foreign-Born

9.1%

192,634

Place of Birth

Africa.....	2.2%
Asia.....	12.8%
Europe.....	7.7%
Latin America.....	75.2%
Northern America.....	1.6%
Oceania.....	0.5%



Source: Migration Policy Institute

1

Determine Who is In Your Community

Texas
2021

Foreign-Born

17.2%

5,092,132

Place of Birth

Africa.....	6.1%
Asia.....	22.8%
Europe.....	4.5%
Latin America.....	65.3%
Northern America.....	1.1%
Oceania.....	0.3%



Source: Migration Policy Institute

1

Determine Who is In Your Community

Louisiana
2021

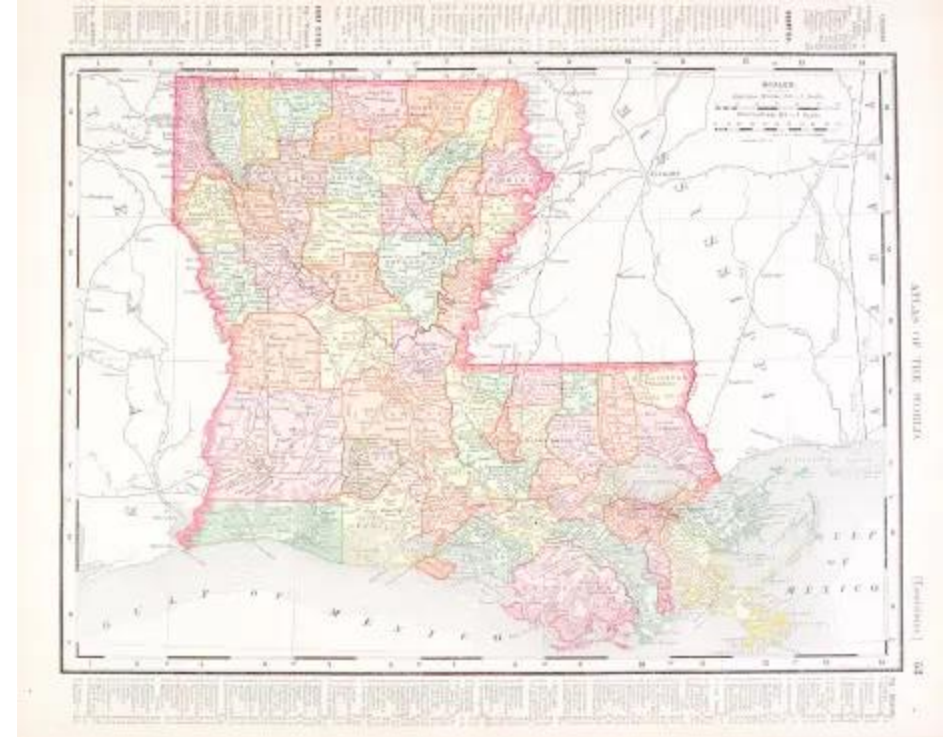
Foreign-Born

4.3%

199,915

Place of Birth

Africa.....	4.7%
Asia.....	32.1%
Europe.....	7.7%
Latin America.....	53.8%
Northern America.....	1.5%
Oceania.....	0.1%



Source: Migration Policy Institute

1

Determine Who is In Your Community

Oklahoma
2021

Foreign-Born

5.8%

230,620

Place of Birth

Africa.....	5.4%
Asia.....	27.4%
Europe.....	7.2%
Latin America.....	56.8%
Northern America.....	2.0%
Oceania.....	1.2%



Source: Migration Policy Institute

2

Assess for Key Challenges

- Learn all you can about why immigrants are coming to your community
- Seek to understand the lived experiences of immigrants in your community
- What challenges are they facing?
- What assets does the community have?



South Southwest (HHS Region 6)

PTTC

Prevention Technology Transfer Center Network
Funded by Substance Abuse and Mental Health Services Administration

What is happening in your community to educate interest groups about the needs of immigrant, refugee, and asylum-seeking individuals?



South Southwest (HHS Region 6)

PTTC

Prevention Technology Transfer Center Network
Funded by Substance Abuse and Mental Health Services Administration



3 Consider Partners and Existing Efforts

Identify agencies and local partners serving immigrant populations in your community



<https://thelibreinitiative.com/>



<https://brightsidefoundation.org/>



<https://aidarkansas.com/>



<https://mhttcnetwork.org/>



South Southwest (HHS Region 6)

PTTC

Prevention Technology Transfer Center Network
Funded by Substance Abuse and Mental Health Services Administration

What role should federal, state, and local government play in improving services to immigrant, refugee, and asylum-seeking individuals and families in your community?



South Southwest (HHS Region 6)

PTTC

Prevention Technology Transfer Center Network
Funded by Substance Abuse and Mental Health Services Administration

Action Steps - Review

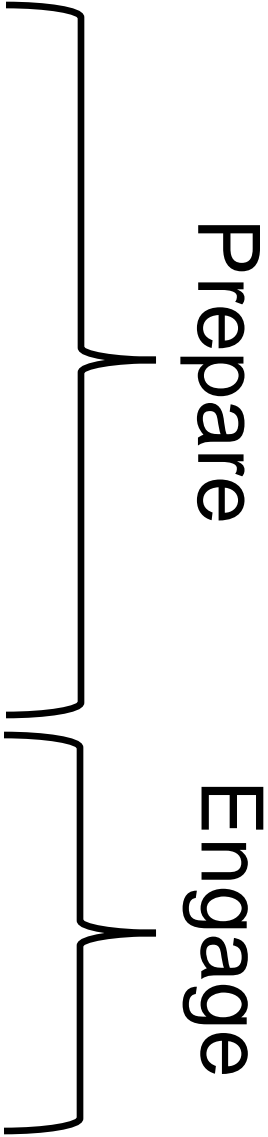
1 Determine Who is in Your Community

2 Assess the Key Challenges

3 Consider Partners and Existing Efforts

4 Identify and/or Adapt Programs

5 Conduct Culturally-Responsive Evaluation



A close-up, low-angle shot of a person's feet as they hike on a rocky trail. The person is wearing dark brown hiking boots with red laces and red accents on the soles. They are also wearing light blue socks and dark brown leggings. The ground is covered with small, grey rocks and dry, brown grass. The background shows a blurred, hilly landscape under a bright sky. The text "Next Steps" is overlaid in white, sans-serif font in the center of the image.

Next Steps

Let's hear from you!
What are your questions?



South Southwest (HHS Region 6)

PTTC

Prevention Technology Transfer Center Network
Funded by Substance Abuse and Mental Health Services Administration



For further questions, contact:

Derrick Newby, T/TA Specialist
South Southwest PTTC Region 6
dnewby@email@ou.edu

Connect with us @

 [SSW PTTC website](http://www.southsouthwestpttc.org)

 [Join our mailing list](#)

 [Products and resources](#)

References

Action Steps for Prevention Practitioners, Great Lakes Prevention Technology Transfer Center, https://pttcnetwork.org/sites/pttc/files/2023-10/Action%20Steps%20for%20Prevention%20Practitioners%20to%20Engage%20Immigrant%2C%20Refugee%20and%20Asylum-Seeking%20Individuals_0.pdf

Advancing Culturally Responsive Evaluations for Boys and Men of Color, <https://bma.issuelab.org/resources/27435/27435.pdf>

Gil et al, 2000, Acculturation, familism and alcohol use among Latino adolescent males: Longitudinal relations. *Journal of Community Psychology*. 2000;28:443–458.

Migration Policy Institute. (n.d.b). State immigration data profiles. <https://www.migrationpolicy.org/programs/data-hub/state-immigration-data-profiles>

Migration Policy Institute. (n.d.c). Texas. <https://www.migrationpolicy.org/data/state-profiles/state/demographics/TX>

Mohamed, S., & Thomas, M. (2017). The mental health and psychological well-being of refugee children and young people: An exploration of risk, resilience and protective factors. *Educational Psychology in Practice*, 33(3), 249–263. <https://doi.org/10.1080/02667363.2017.1300769>

Myers, R., Chou, C. P., Sussman, S., Baezconde-Garbanati, L., Pachon, H., & Valente, T. W. (2009). Acculturation and substance use: Social influence as a mediator among Hispanic alternative high school youth. *Journal of Health and Social Behavior*, 50(2), 164–179. <https://doi.org/10.1177%2F002214650905000204>



South Southwest (HHS Region 6)

PTTC

Prevention Technology Transfer Center Network
Funded by Substance Abuse and Mental Health Services Administration

References

National Immigration Forum. (2020, November 5). Fact sheet: U.S. refugee resettlement.

<https://immigrationforum.org/article/fact-sheet-u-s-refugee-resettlement>

Salas-Wright, Et al, Immigrants and mental disorders in the united states: New evidence on the healthy migrant hypothesis, <https://pubmed.ncbi.nlm.nih.gov/29980122/>

Strunin, et al, 2013, Parental Monitoring and Alcohol Use among Mexican Students. <https://www.ncbi.nlm.nih.gov/pmc/articles/PMC3756822/>

Unger et al, 2002, The influence of acculturation on drug and alcohol use in a sample of adolescents, <https://www.ncbi.nlm.nih.gov/pmc/articles/PMC2062572/>

Valdez et al., 2010, Family history in public health practice: a genomic tool for disease prevention and health promotion, <https://pubmed.ncbi.nlm.nih.gov/20070206/>

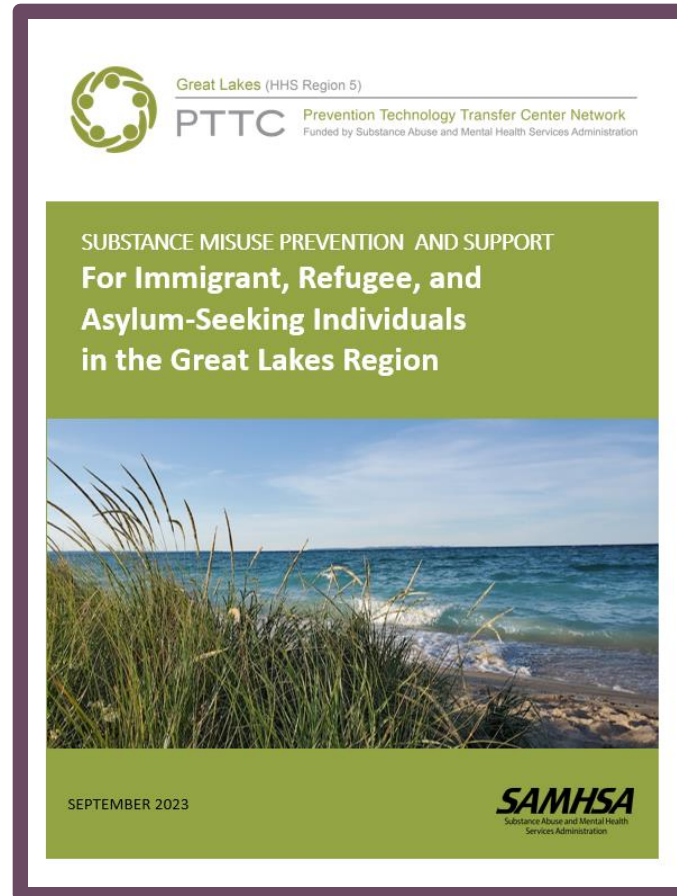
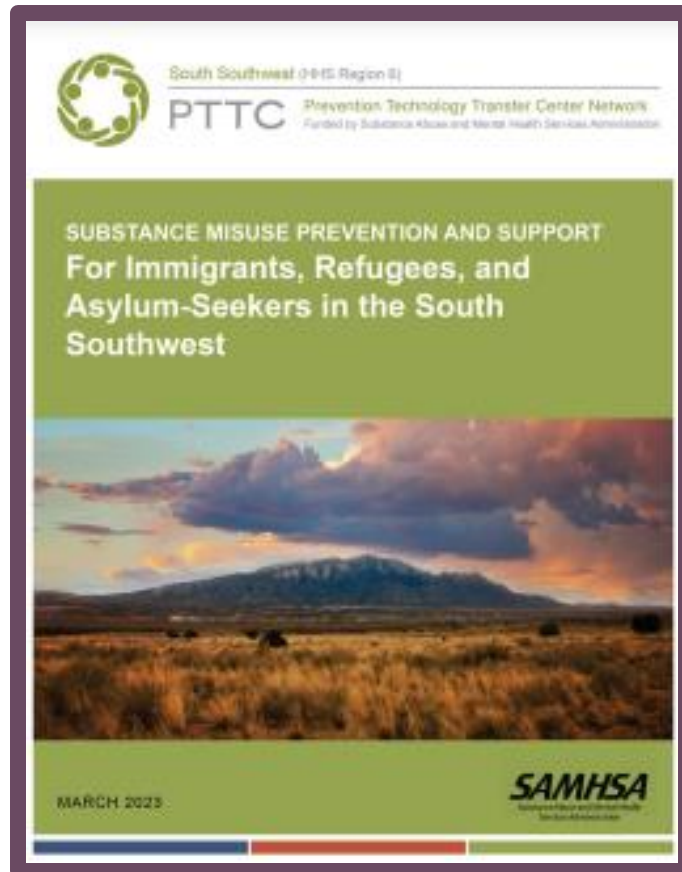


South Southwest (HHS Region 6)

PTTC

Prevention Technology Transfer Center Network
Funded by Substance Abuse and Mental Health Services Administration

Resources



Action Steps for Prevention Practitioners To Engage Immigrants, Refugees, and Asylum Seekers

Take Action!

This resource highlights the actions that the prevention workforce can take to support immigrants, refugees and asylum seekers living in their communities.

More than 1 billion people globally are immigrants, refugees, and migrants.¹ These individuals face challenges including economic, social, and other obstacles to health and healthcare.

¹ Centers for Disease Control and Prevention, [Immigrant, Refugee, and Migrant Health](#).

Determine Who is in Your Community


- Review regional and local data on immigrants, refugees, and asylum seekers. The Homeland Security [Yearbook of Immigration Statistics](#) is a great place to start.
- Download state immigration data profiles compiled by the [Migration Policy Institute](#).

Assess the Key Challenges

- Learn all you can about [Immigrant, Refugee, and Migrant Health](#). The CDC is a key resource.
- Learn about [challenges, opportunities, and best practices](#) for interviewing local individuals with lived experience.

Consider Partners and Existing Efforts

- Identify agencies such as the [Refugee Council USA](#) and local partners already providing services and creating welcoming communities.
- Consider the basic needs for essential services by contacting groups such as [Catholic Charities USA](#) or Lutheran Immigration and Refugee Service ([LIRS](#)).
- Allow time for relationships to trust and grow.



Prevention practitioners are in a unique position to partner with local organizations to promote strategies and services that can reduce risks for substance misuse, promote resilience, ensure community connectedness, and reduce stigma.

Identify and/or Adapt Programs

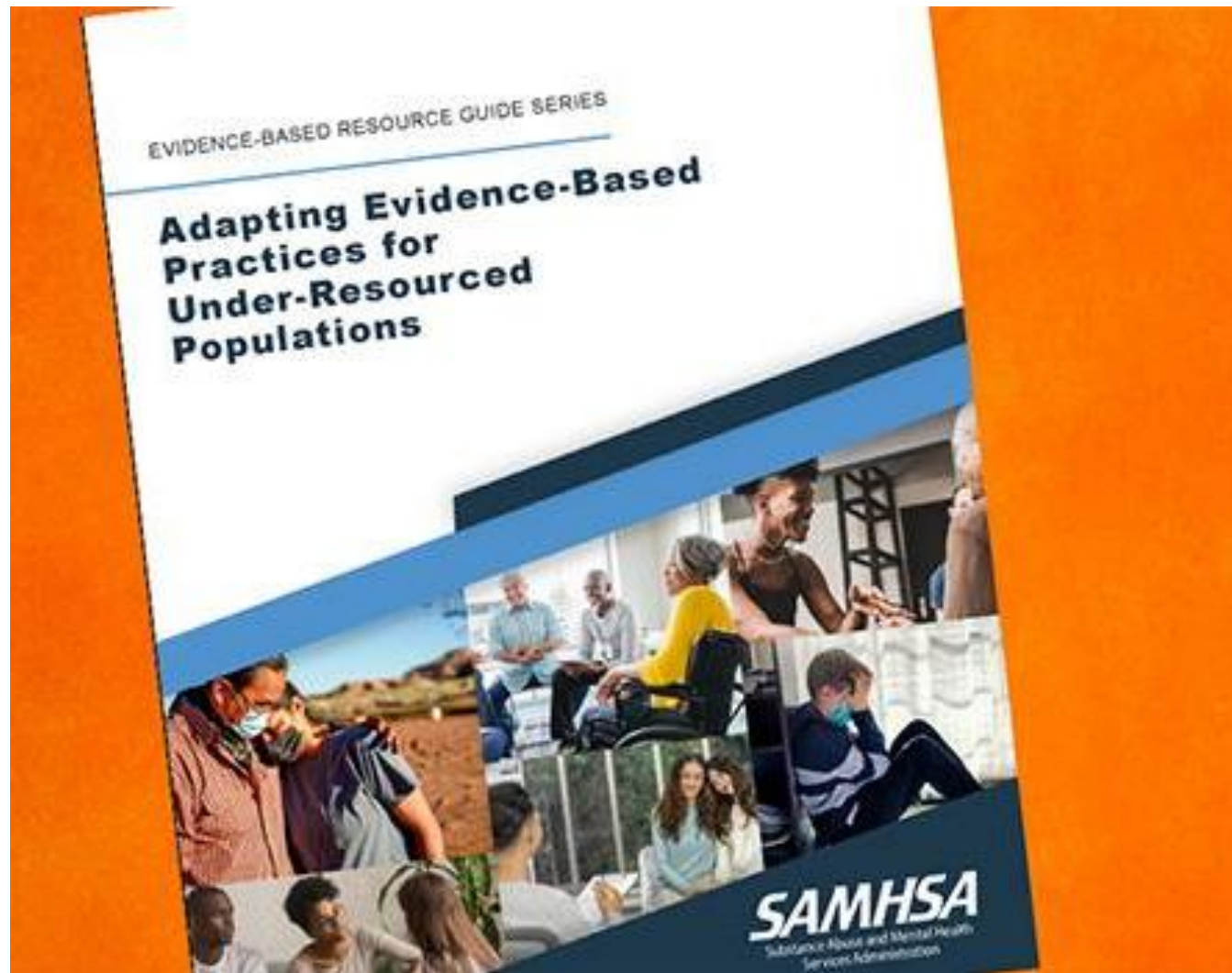
- Check out registries focused on culturally relevant programs working with immigrant and refugee families such as the [Child Welfare Information Gateway](#).
- Learn all you can about Strategies for Adapting Evidence-Based Practices. Check out [SAMHSA's guide](#).
- Find ways to reduce barriers to participation in prevention activities, such as transportation and cost.

Conduct Culturally-responsive Evaluation

- Learn about [culturally responsive evaluation](#) (CRE) and assessments such as [CREA](#) at the University of Illinois.

Great Lakes (HHS Region 5)
PTTC
Prevention Technology Transfer Center Network
Funded by Substance Abuse and Mental Health Services Administration

Prevention Technology Transfer Centers
South Southwest (Region 6) and Great Lakes (Region 5)



Resource

Adapting Evidence-Based Practices for Under-Resourced Populations

Publication Date: Sep 20, 2022

[Adapting Evidence-based Practices for Under-resourced Populations | SAMHSA Publications and Digital Products - https://store.samhsa.gov/product/evidence-based-practices-under-resourced-populations/pep22-06-02-004](https://store.samhsa.gov/product/evidence-based-practices-under-resourced-populations/pep22-06-02-004)